

**PROJECT SPECIAL NOTES**

1. NO CONDUIT SHALL BE INSTALLED IN ANY FLOOR SLAB THAT IS NOT ON GRADE. NO EXCEPTIONS. CONDUIT SHALL BE INSTALLED OVERHEAD OR ROUTED THROUGH THE SLAB AND INSTALLED ABOVE THE CEILING OF THE LEVEL BELOW.

**FIRE ALARM PLAN NOTES**

- SEE ELECTRICAL LEGEND, ELECTRICAL DETAILS, AND SPECIFICATIONS FOR REQUIREMENTS AND MOUNTING HEIGHTS.
- PROVIDE POWER EXTENDER PANELS AS REQUIRED BY FIRE ALARM SYSTEM MANUFACTURER / SUPPLIER / INSTALLER.
- PROVIDE ALL NECESSARY BRANCH CIRCUITS TO POWER EXTENDER PANELS. BRANCH CIRCUITS SHALL BE FED FROM NEAREST 208V/120V PANELBOARD. PROVIDE LOCKING DEVICES ON CIRCUIT BREAKER HANDLES.
- SEE SHEET E3.01 FOR FIRE ALARM PLAN KEYNOTES.

**FIRE ALARM PLAN KEYNOTES**

VALUE	NOTE
F2	JUNCTION BOX FOR ELECTRICAL WATER GONG. VERIFY EXACT LOCATION IN FIELD. MAKE FINAL CONNECTIONS TO GONG.
F3	COORDINATE EXACT LOCATION OF EQUIPMENT WITH EQUIPMENT INSTALLER AND AUTHORITY HAVING JURISDICTION.
F4	RENDERING ALL STATIONS FOR FIRE ALARM SYSTEM. COORDINATE EXACT LOCATION WITH EQUIPMENT INSTALLER AND AUTHORITY HAVING JURISDICTION.
F5	RELAYS FOR ELEVATOR INTERFACE. ELEVATOR CONTROL PANEL LOCATED IN ELEVATOR JAMB. COORDINATE WITH ELEVATOR INSTALLER.
F6	SECTION ELEVATOR STOP. COORDINATE WITH ELEVATOR INSTALLER.

**ROBERTSON ROOF ARCHITECTS ENGINEERS**  
 2450 Peachtree Ridge Road, Suite 277  
 Marietta, GA 30065  
 770.674.2600 / www.rre.com



(Facility No. 642-01198)  
**Dawson County College and Career Academy**  
 Dawsonville, Georgia  
 FOR **Dawson County Schools**  
 Overall Squarefootage = 55,800 SF  
 U.S. = 74 (Existing) + 11 (New) = 85 U.S.  
 FTE = 625

REVISIONS

NO.	DESCRIPTION

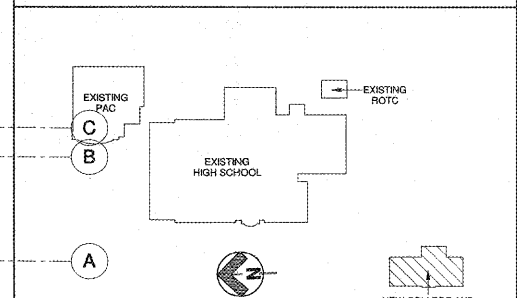
DATE: 04-24-2018  
 PROJECT NUMBER: 17-303  
 SHEET NUMBER: E3.01

04-24-2018

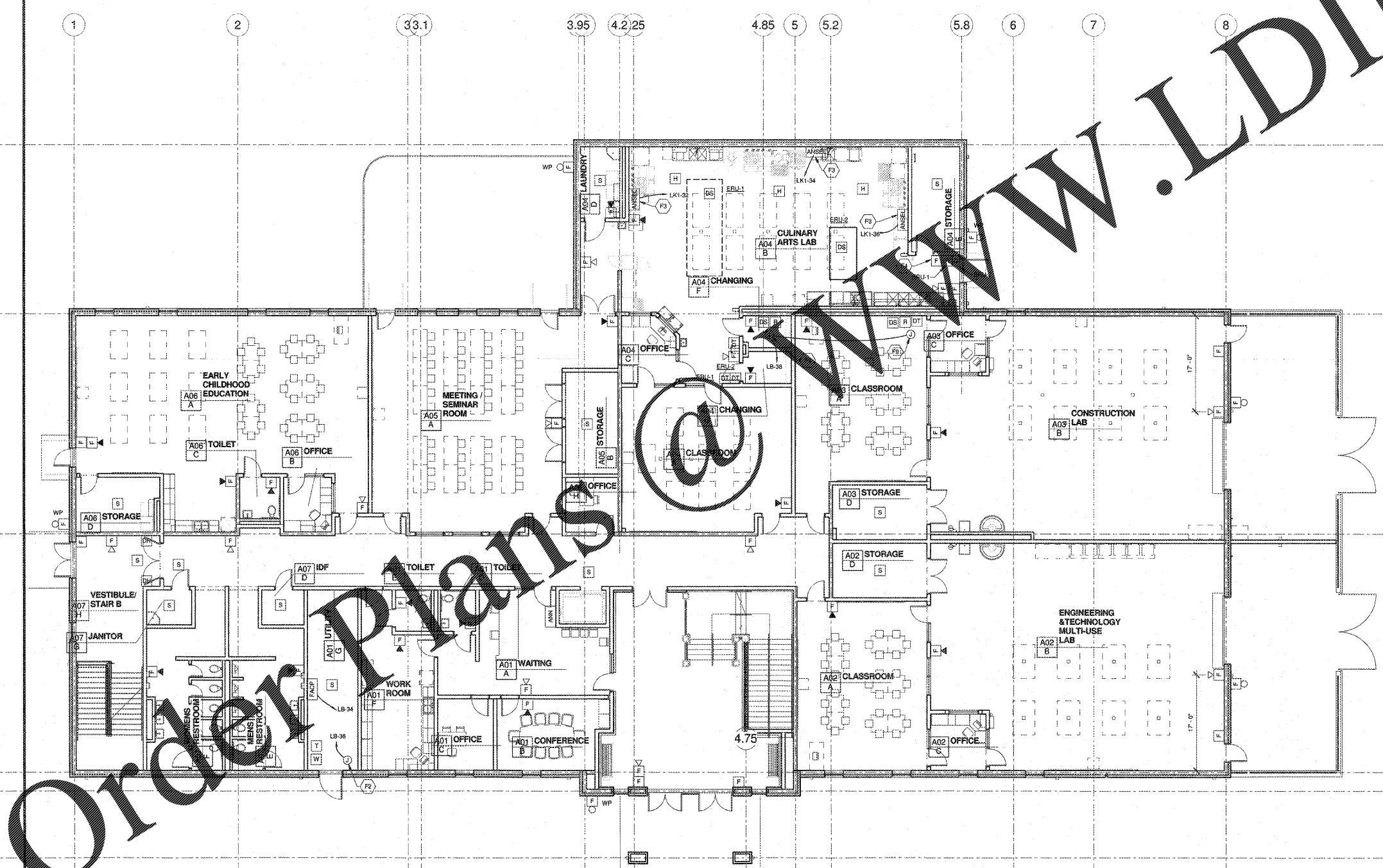
17-303

E3.01

**KEY PLAN**



**FIRE ALARM PLAN - LOWER LEVEL**  
 1/8" = 1'-0"



Order Plans @ www.LDILLINE.com