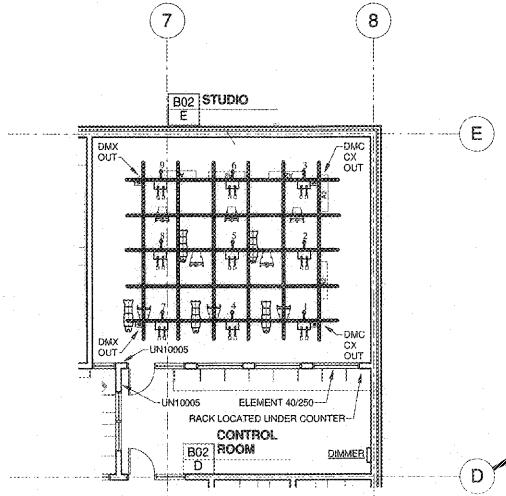


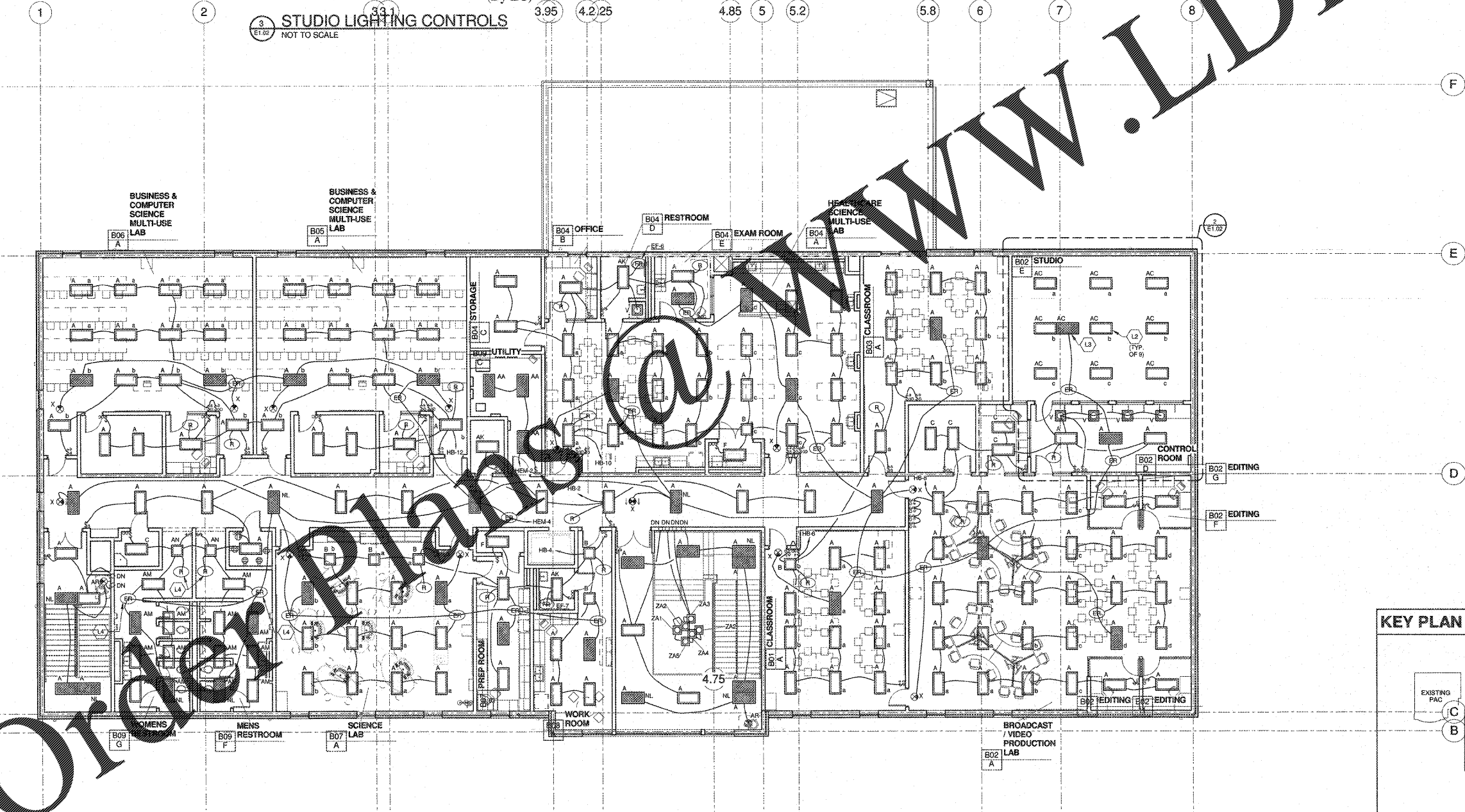
Instruments	QTY	Accessories
Cable Source Pair	8	Lenses Set of 4 each, DMX, power cables as needed.
Source Four LED 2 Triggers (H) ERS 19, 26, 36, or 50-72in	5	12 gobos with Gobo Holders, Assorted Gel Color.
Scalpel Vixid 42"	5	Lenses Set of 4 each, DMX, power cables as needed.

All fixtures to be provided with C-Clamps, Safety Cables, Lamps, Lenses, Hanging Hardware and Power Cables and Extensions as Needed.

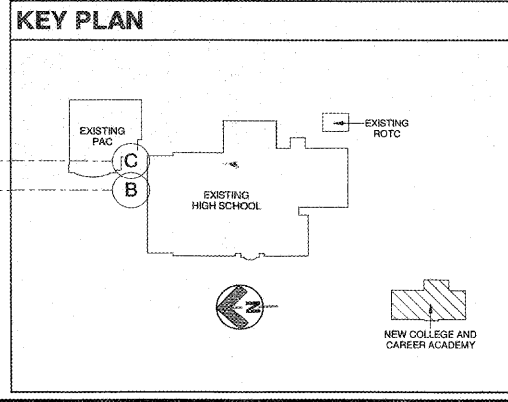


3 STUDIO LIGHTING CONTROLS
NOT TO SCALE

2 STUDIO LIGHTS
1/8" = 1'-0"



1 LIGHTING PLAN - UPPER LEVEL
1/8" = 1'-0"



KEY PLAN

PROJECT SPECIAL NOTES

- NO CONDUIT SHALL BE INSTALLED IN ANY FLOOR SLAB THAT IS NOT ON GRADE. NO EXCEPTIONS. CONDUIT SHALL BE INSTALLED OVERHEAD OR ROUTED THROUGH THE SLAB AND INSTALLED ABOVE THE CEILING OF THE LEVEL BELOW.

LIGHTING PLAN NOTES

- CONTRACTOR SHALL BE RESPONSIBLE FOR DETERMINING NUMBER OF CONDUCTORS IN BRANCH CIRCUITS AND SWITCH LEGS.
- SEE SHEET E1.01 FOR LIGHTING PLAN KEYNOTES.

ROBERTSON DIA ROOF ARCHITECTS ENGINEERS
3440 Preston Ridge Rd., Suite 275, Marietta, GA 30065
770.674.2000 / www.rdr.com



Dawson County College and Career Academy
Dawsonville, Georgia
Dawson County Schools
Overall Squarefootage = 35,800 SF
PFE = 1025
Facility No. 642-0981
US = 74 (Existing) + 11 (New) = 85 US

REVISIONS

NO.	DATE	DESCRIPTION

DATE: 04-24-2018
PROJECT NUMBER: 17-303
SHEET NUMBER: E1.02