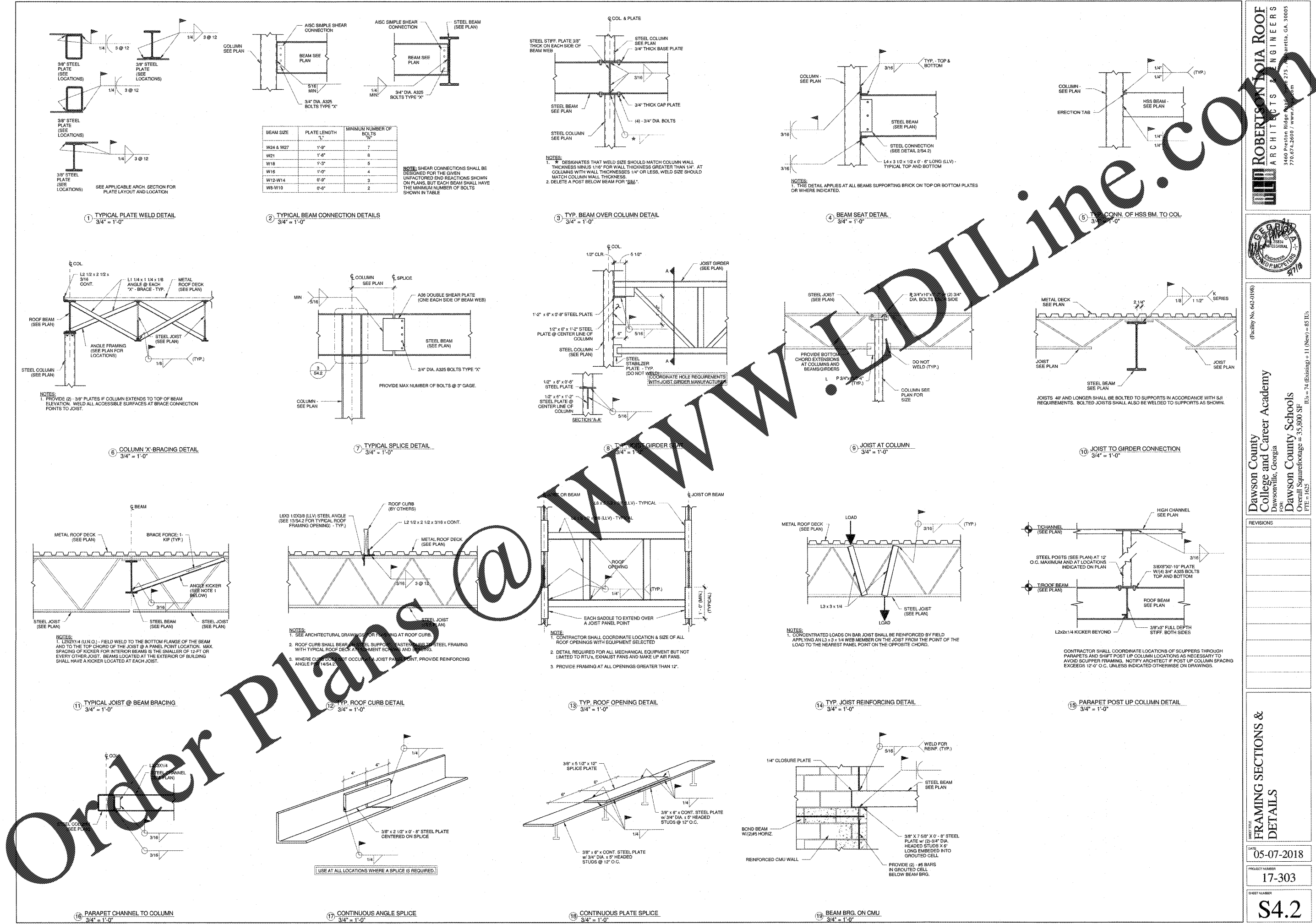


NO.	REVISIONS



BEAM SIZE	PLATE LENGTH "L"	MINIMUM NUMBER OF BOLTS "N"
W24 & W27	1'-9"	7
W21	1'-6"	6
W18	1'-3"	5
W16	1'-0"	4
W12-W14	0'-9"	3
WB-W10	0'-6"	2

NOTE: SHEAR CONNECTIONS SHALL BE DESIGNED FOR THE GIVEN UNFACTORED END REACTIONS SHOWN ON PLANS, BUT EACH BEAM SHALL HAVE THE MINIMUM NUMBER OF BOLTS SHOWN IN TABLE

NOTES:
 1. * DESIGNATES THAT WELD SIZE SHOULD MATCH COLUMN WALL THICKNESS MINUS 1/16" FOR WALL THICKNESS GREATER THAN 1/4". AT COLUMNS WITH WALL THICKNESSES 1/4" OR LESS, WELD SIZE SHOULD MATCH COLUMN WALL THICKNESS.
 2. DELETE A POST BELOW BEAM FOR "SMB".

NOTES:
 1. THIS DETAIL APPLIES AT ALL BEAMS SUPPORTING BRICK ON TOP OR BOTTOM PLATES OR WHERE INDICATED.

NOTES:
 1. PROVIDE (2) - 3/8" PLATES IF COLUMN EXTENDS TO TOP OF BEAM ELEVATION. WELD ALL ACCESSIBLE SURFACES AT BRACE CONNECTION POINTS TO JOIST.

PROVIDE MAX NUMBER OF BOLTS @ 3" GAGE.

COORDINATE HOLE REQUIREMENTS WITH JOIST GIRDER MANUFACTURER.

PROVIDE BOTTOM CHORD EXTENSIONS AT COLUMNS AND BEAMS/GIRDERS. DO NOT WELD (TYP.)

JOISTS 40' AND LONGER SHALL BE BOLTED TO SUPPORTS IN ACCORDANCE WITH SJI REQUIREMENTS. BOLTED JOISTS SHALL ALSO BE WELDED TO SUPPORTS AS SHOWN.

NOTES:
 1. L2X2X1/4 (U.N.O.) - FIELD WELD TO THE BOTTOM FLANGE OF THE BEAM AND TO THE TOP CHORD OF THE JOIST @ A PANEL POINT LOCATION. MAX SPACING OF KICKER FOR INTERIOR BEAMS IS THE SMALLER OF 12'-0" OR EVERY OTHER JOIST. BEAMS LOCATED AT THE EXTERIOR OF BUILDING SHALL HAVE A KICKER LOCATED AT EACH JOIST.

NOTES:
 1. SEE ARCHITECTURAL DRAWINGS FOR FRAMING AT ROOF CURB.
 2. ROOF CURB SHALL BEAR ON PANEL SUPPORTS. FASTENERS TO STEEL FRAMING WITH TYPICAL ROOF DECK AS SHOWN IN SECTION AND S4.203.
 3. WHERE CURB IS NOT OCCURRING AT JOIST PANEL POINT, PROVIDE REINFORCING ANGLE PER S4.203.

NOTE:
 1. CONTRACTOR SHALL COORDINATE LOCATION & SIZE OF ALL ROOF OPENINGS WITH EQUIPMENT SELECTED.
 2. DETAIL REQUIRED FOR ALL MECHANICAL EQUIPMENT BUT NOT LIMITED TO RTU's, EXHAUST FANS AND MAKE UP AIR FANS.
 3. PROVIDE FRAMING AT ALL OPENINGS GREATER THAN 12'.

NOTES:
 1. CONCENTRATED LOADS ON BAR JOIST SHALL BE REINFORCED BY FIELD APPLYING AN L3 X 3 X 1/4 WEB MEMBER ON THE JOIST FROM THE POINT OF THE LOAD TO THE NEAREST PANEL POINT ON THE OPPOSITE CHORD.

CONTRACTOR SHALL COORDINATE LOCATIONS OF SCUPPERS THROUGH PARAPETS AND SHIFT POST UP COLUMN LOCATIONS AS NECESSARY TO AVOID SCUPPER FRAMING. NOTIFY ARCHITECT IF POST UP COLUMN SPACING EXCEEDS 12'-0" O.C. UNLESS INDICATED OTHERWISE ON DRAWINGS.

Order Plans @ www.wldline.com

USE AT ALL LOCATIONS WHERE A SPLICE IS REQUIRED.