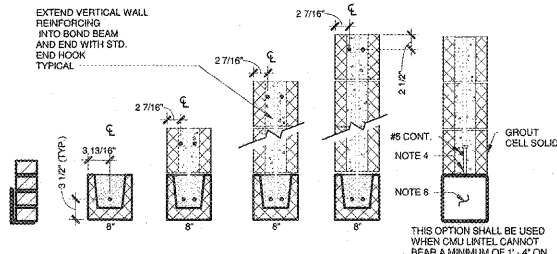


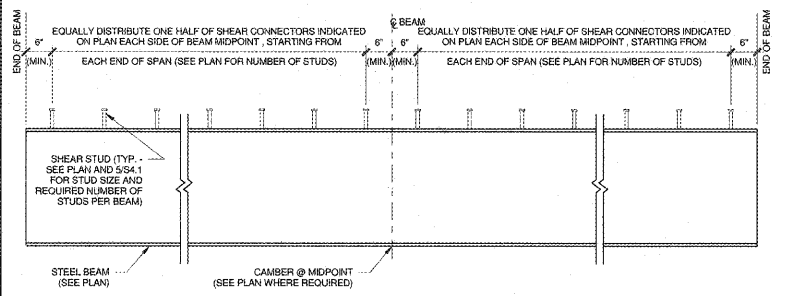
MASONRY LINTEL SCHEDULE FOR 8" CMU



OPENING WIDTH	MINIMUM	MAXIMUM	LEDGE ANGLE	8" DEEP	16" DEEP	32" DEEP	48" DEEP	STEEL TUBE
3'-4"	3'-4"	5'-4"	L3 1/2 x 3 1/2 x 1/4	1-#4				HSS8X8X1/4
5'-4"	5'-4"	7'-4"	L3 1/2 x 3 1/2 x 1/4	4-#5				HSS8X8X1/4
7'-4"	7'-4"	10'-0"	L8 x 4 x 7/16	4-#5	4-#5			HSS8X8X3/8
10'-0"	10'-0"	13'-0"	L8 x 4 x 7/16	4-#5	4-#5	4-#5		HSS16X8X1/4

- EXTEND BOND BEAM REINFORCING 24" OR 40 DB BEYOND THE EXTENTS OF THE OPENING. VERTICAL REINFORCING AT THE SIDES OF THE OPENING SHALL BE CONTINUOUS THROUGH THE BOND BEAM. PROVIDE KNOCK OUTS IN THE BOTTOM OF THE BOND BEAM BLOCK AS REQUIRED TO ALLOW REINFORCING TO PASS THROUGH.
- SEE DETAIL ASS-1 AND PLANS FOR ADDITIONAL REINFORCING REQUIRED AT OPENINGS.
- PROVIDE 4" PER 4" OF WYTHE THICKNESS BEARING FOR STEEL ANGLE LINTELS AT EACH END.
- PROVIDE 5/8" DIAMETER 6" LONG HEADED CONCRETE ANCHORS AT 16" O.C. IN GROUT FILLED CELL WELDED TO HSS. (SEE 205.4.2 FOR STEEL TUBE BRG. @ CMU WALL)
- HSS STEEL LINTEL AND STEEL ANGLE SHALL BE GALVANIZED AT EXTERIOR APPLICATIONS.
- PROVIDE 1/4" CLOSURE PLATES AT OPEN ENDS OF TUBE.

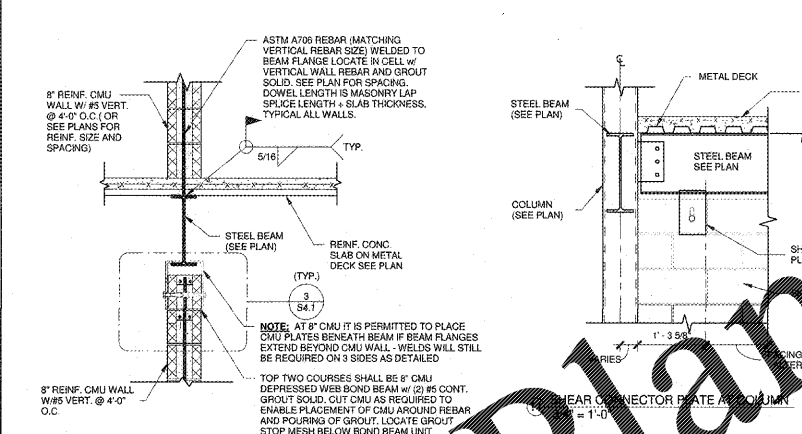
MASONRY LINTEL SCHEDULE FOR 8" CMU
1" = 1'-0"



DISTRIBUTED SHEAR STUD PLACEMENT

- NOTES:**
- SPACING OF SHEAR STUDS SHALL NOT EXCEED BY THE TOTAL SLAB THICKNESS NOR BE GREATER THAN 24" O.C. SPACING SHALL BE NO CLOSER THAN 6X STUD DIAMETER OR DISTANCE BETWEEN DECK FLUTES FOR STEEL DECKS WHEN DECK FLUTE IS PERPENDICULAR TO BEAM. COORDINATE STUD LAYOUT WITH DECK MANUFACTURER'S RECOMMENDATIONS.
 - DOUBLE AND TRIPLE STUD PLACEMENT TO BE SYMMETRICAL ABOUT BEAM WEB. MAINTAIN 4X STUD DIAMETER TRANSVERSE SPACING BETWEEN STUDS IN PARALLEL ROWS, WITH A MINIMUM EDGE DISTANCE OF 1 1/2 STUD DIAMETERS (1" MINIMUM).

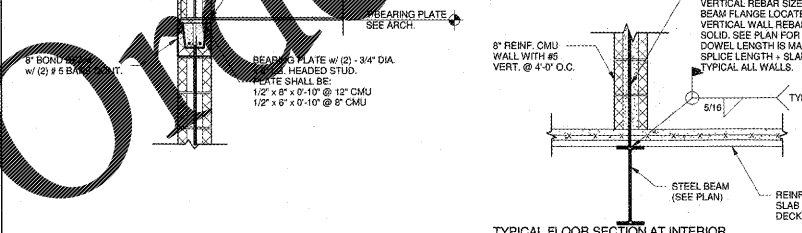
TYPICAL SHEAR STUD PLACEMENT DIAGRAMS
3/4" = 1'-0"



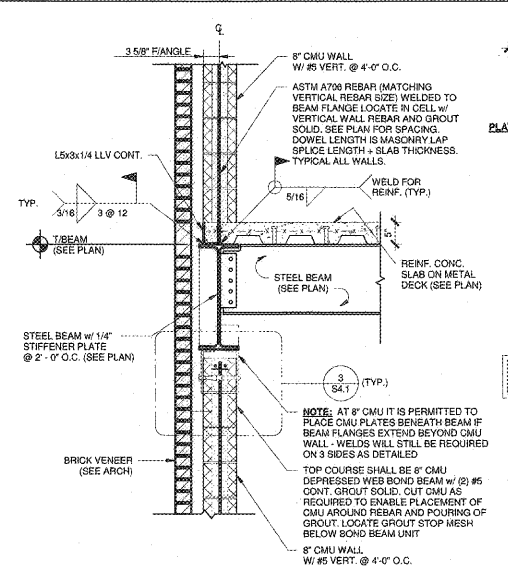
TYPICAL FLOOR SECTION AT INTERIOR WALL
3/4" = 1'-0"



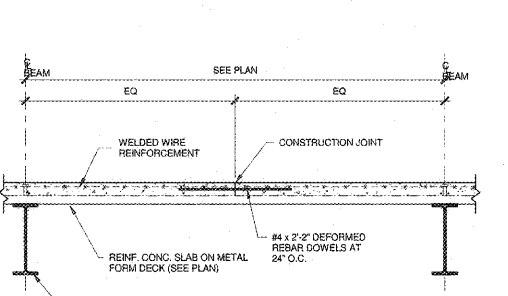
FLOOR SECTION AT OFFSET BEAM BEARING
3/4" = 1'-0"



BEAM BEARING ON CMU WALL
3/4" = 1'-0"



FLOOR BEAM DETAIL 1 @ 8" CMU
3/4" = 1'-0"



CMU CONNECTION PLATE
3/4" = 1'-0"

FLOOR BEAM DETAIL 2 @ 8" CMU
3/4" = 1'-0"

COMPOSITE CONSTRUCTION JOINT DETAIL
3/4" = 1'-0"

COMPOSITE CONSTRUCTION JOINT DETAIL AT GIRDER
3/4" = 1'-0"

ANCHOR PLATE ELEVATION

FLOOR SECTION AT INTERIOR WALL
3/4" = 1'-0"

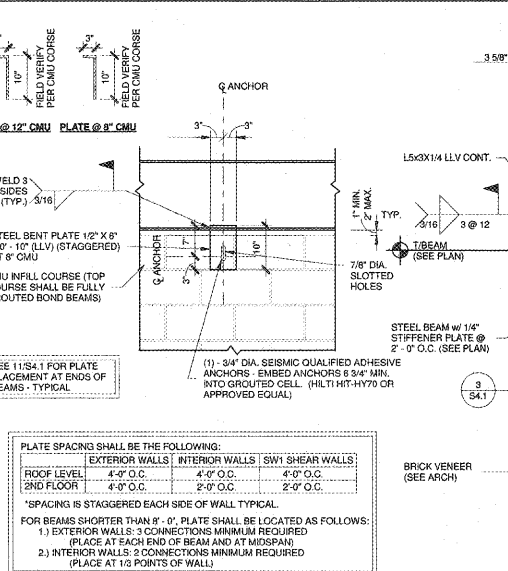
CMU SUPPORT ON TUBE BEAM
3/4" = 1'-0"

TUBE BEAM END CONNECTION

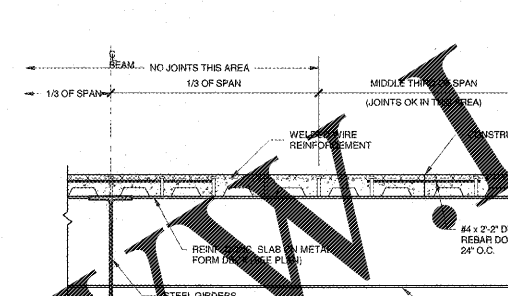
HANGER DETAIL @ STRUT
1 1/2" = 1'-0"

HANGER DETAIL @ ROD
1 1/2" = 1'-0"

FAN COIL UNIT SUPPORT
3/4" = 1'-0"



FLOOR BEAM DETAIL 1 @ 8" CMU
3/4" = 1'-0"



CMU CONNECTION PLATE
3/4" = 1'-0"

FLOOR BEAM DETAIL 2 @ 8" CMU
3/4" = 1'-0"

COMPOSITE CONSTRUCTION JOINT DETAIL
3/4" = 1'-0"

COMPOSITE CONSTRUCTION JOINT DETAIL AT GIRDER
3/4" = 1'-0"

ANCHOR PLATE ELEVATION

FLOOR SECTION AT INTERIOR WALL
3/4" = 1'-0"

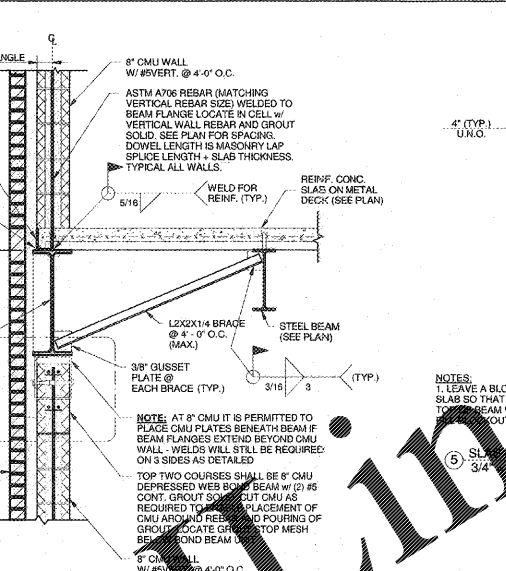
CMU SUPPORT ON TUBE BEAM
3/4" = 1'-0"

TUBE BEAM END CONNECTION

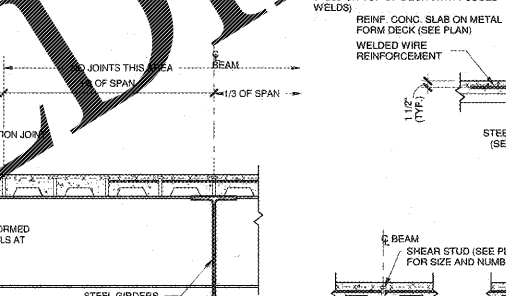
HANGER DETAIL @ STRUT
1 1/2" = 1'-0"

HANGER DETAIL @ ROD
1 1/2" = 1'-0"

FAN COIL UNIT SUPPORT
3/4" = 1'-0"



FLOOR BEAM DETAIL 1 @ 8" CMU
3/4" = 1'-0"



CMU CONNECTION PLATE
3/4" = 1'-0"

FLOOR BEAM DETAIL 2 @ 8" CMU
3/4" = 1'-0"

COMPOSITE CONSTRUCTION JOINT DETAIL
3/4" = 1'-0"

COMPOSITE CONSTRUCTION JOINT DETAIL AT GIRDER
3/4" = 1'-0"

ANCHOR PLATE ELEVATION

FLOOR SECTION AT INTERIOR WALL
3/4" = 1'-0"

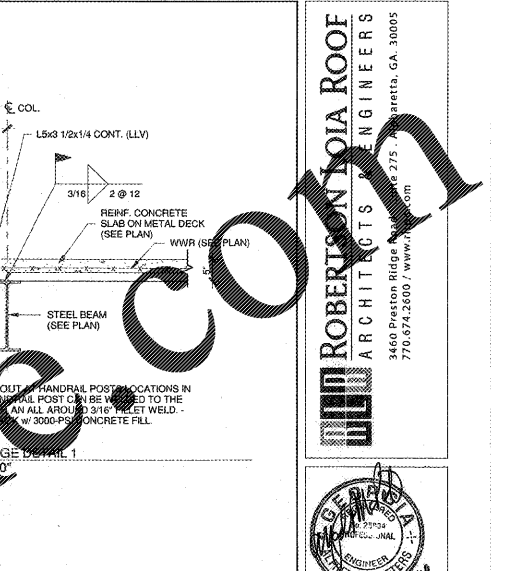
CMU SUPPORT ON TUBE BEAM
3/4" = 1'-0"

TUBE BEAM END CONNECTION

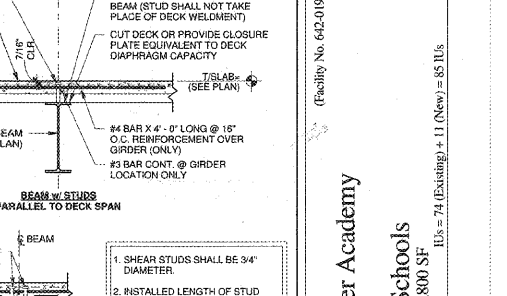
HANGER DETAIL @ STRUT
1 1/2" = 1'-0"

HANGER DETAIL @ ROD
1 1/2" = 1'-0"

FAN COIL UNIT SUPPORT
3/4" = 1'-0"



FLOOR BEAM DETAIL 1 @ 8" CMU
3/4" = 1'-0"



CMU CONNECTION PLATE
3/4" = 1'-0"

FLOOR BEAM DETAIL 2 @ 8" CMU
3/4" = 1'-0"

COMPOSITE CONSTRUCTION JOINT DETAIL
3/4" = 1'-0"

COMPOSITE CONSTRUCTION JOINT DETAIL AT GIRDER
3/4" = 1'-0"

ANCHOR PLATE ELEVATION

FLOOR SECTION AT INTERIOR WALL
3/4" = 1'-0"

CMU SUPPORT ON TUBE BEAM
3/4" = 1'-0"

TUBE BEAM END CONNECTION

HANGER DETAIL @ STRUT
1 1/2" = 1'-0"

HANGER DETAIL @ ROD
1 1/2" = 1'-0"

FAN COIL UNIT SUPPORT
3/4" = 1'-0"

ROBERTSON ROJA ARCHITECTS ENGINEERS
3460 Preston Ridge Road, Suite 275, Marietta, GA 30067
770.574.2600 / www.rre.com



Faculty No. 642-0108
Dawson County College and Career Academy
Dawsonville, Georgia
FOR: **Dawson County Schools**
Overall Squarefootage = 35,800 SF
FFE = 1025

REVISIONS

NO.	DESCRIPTION

FRAMING SECTIONS & DETAILS

DATE: 05-07-2018
PROJECT NUMBER: 17-303
SHEET NUMBER: S4.1