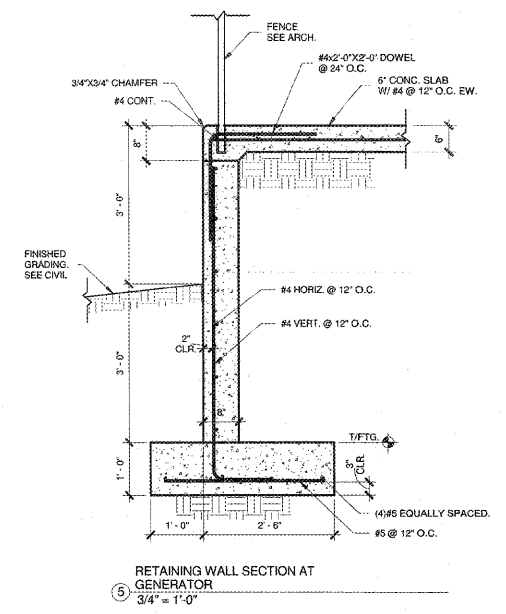
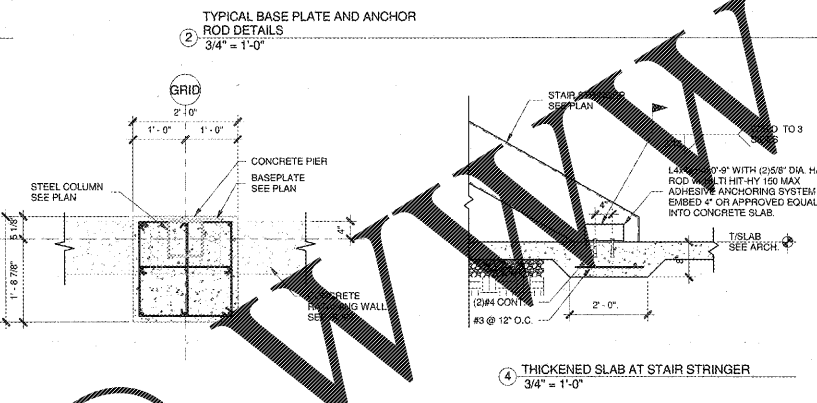
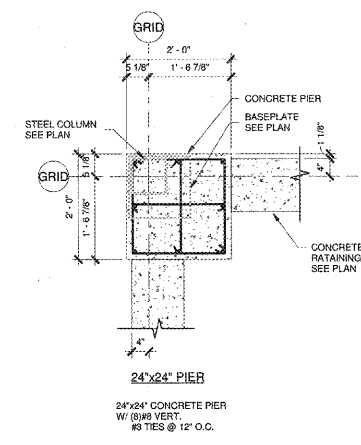
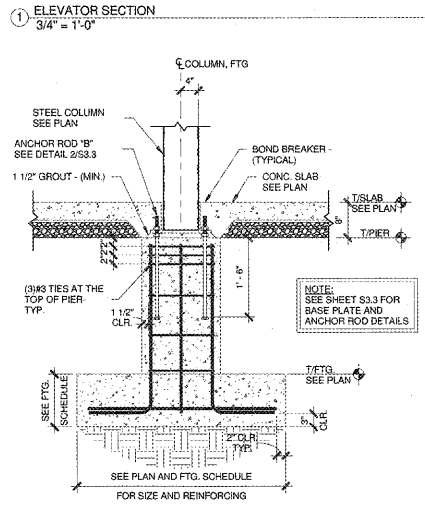
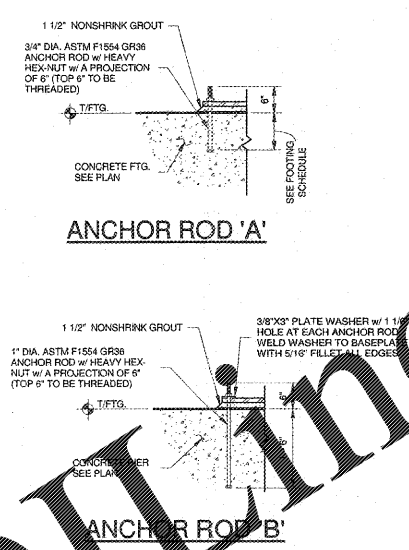
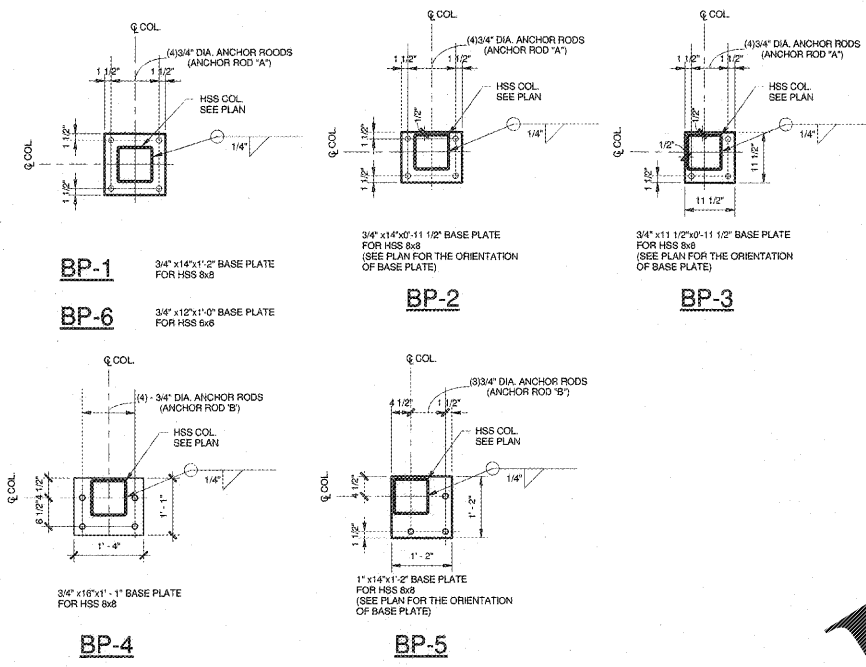
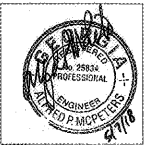


- NOTES:**
1. CONTRACTOR SHALL COORDINATE SILL DETAILS REQUIRED WITH MANUFACTURER FOR MODEL PROVIDED.
 2. CONTRACTOR SHALL PROVIDE FILLED CELLS FOR ELEVATOR GUIDE RAIL SUPPORT BRACKET LOCATIONS AND OTHER ELEVATOR EQUIPMENT AND ACCESSORIES THAT WILL BE ANCHORED TO MASONRY WALLS.
 3. REFER TO PLUMBING DRAWINGS AND MANUFACTURER'S REQUIREMENTS FOR SUMP PIT DIMENSIONS AND LOCATIONS.
 4. REFER TO MANUFACTURER'S REQUIREMENTS FOR JACK HOLE DETAILS IF REQUIRED.
 5. CONTRACTOR SHALL COORDINATE PIT AND SHAFT DIMENSIONS WITH ELEVATOR MANUFACTURER FOR MODEL PROVIDED.



Order Plans @

ROBERTSON INDIA ROOF ARCHITECTS ENGINEERS
 3460 Preston Ridge Rd. Marietta, GA 30067
 770.674.2600 / www.rif.com



Faculty No. 642-0198
Dawson County College and Career Academy
 Dawsonville, Georgia
 FOR: **Dawson County Schools**
 Overall Square Footage = 35,800 SF
 FTE = 1625
 IUS = 74 (Existing) + 11 (New) = 85 IUS

REVISIONS

NO.	DATE	DESCRIPTION

FOUNDATION SECTIONS & DETAILS
 DATE: 05-07-2018
 PROJECT NUMBER: 17-303
 SHEET NUMBER: S3.3