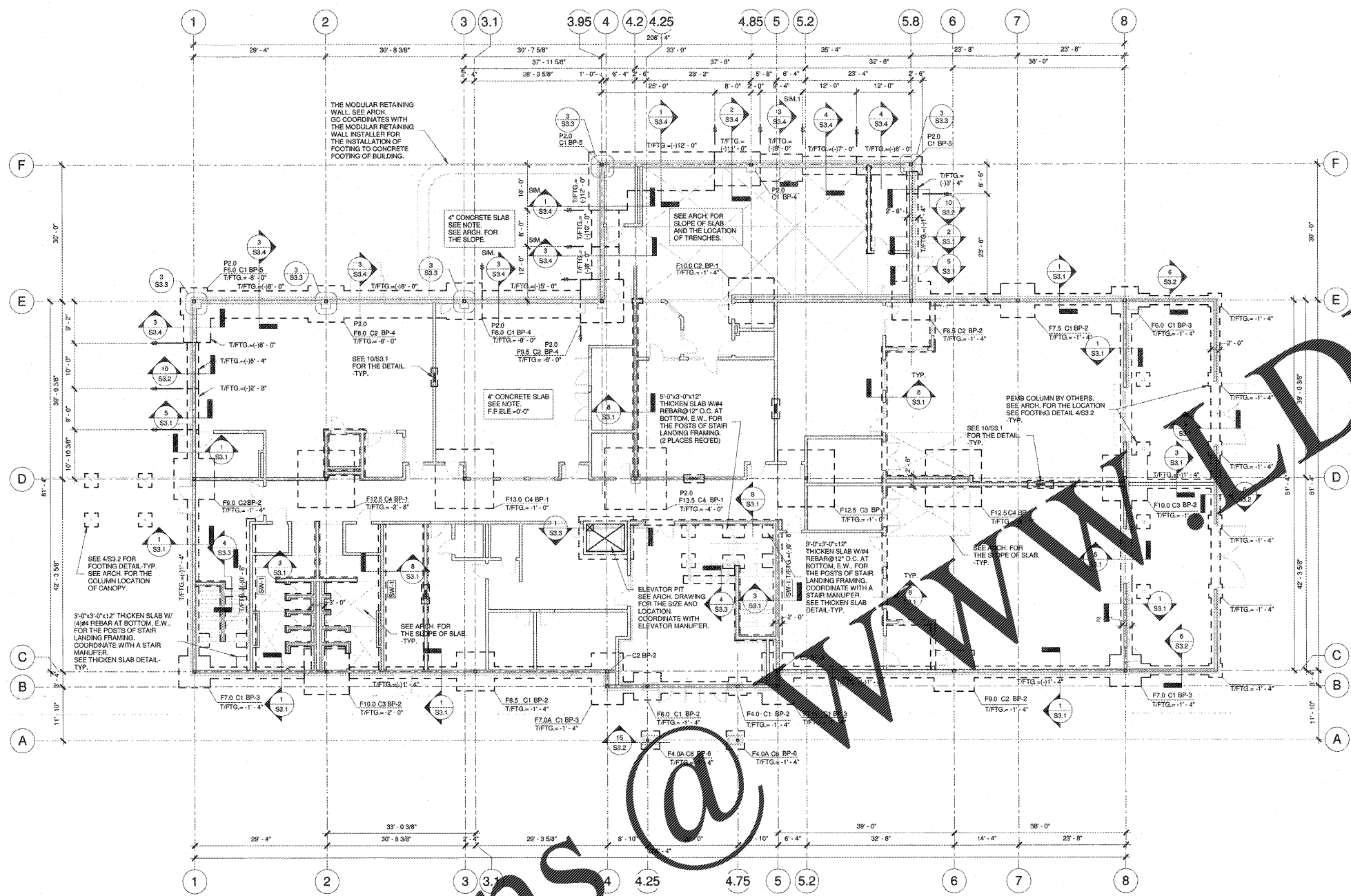
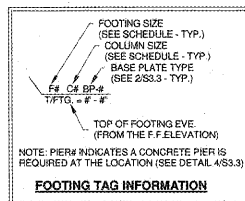


Order Plans @



- FOUNDATION NOTES:**
- REFER TO ARCHITECTURAL DRAWINGS FOR DIMENSIONS AT INTERIOR MASONRY WALLS AND SLAB CONTROL JOINT LOCATIONS.
 - STEP FOUNDATION DOWN BELOW ALL MECHANICAL, ELECTRICAL OR PLUMBING LINES AS REQUIRED TO AVOID INTERFERENCE. SEE TYPICAL FOOTING DETAIL 7/S3.1. COORDINATE WITH OTHER TRADES.
 - DENOTES FOOTING STEP. SEE DETAIL 7/S3.1
 - FLOOR SLAB ON GRADE SHALL BE 4" OR 6" THICK 3000 PSI CONCRETE WITH 6x6 W/ 1X1X1/4 W.F. IN THE MIDDLE OF CONCRETE SLAB. REFER CONCRETE PLACEMENT PLAN (SEE ARCH.1) FOR RECESSED FLOOR FINISH PLAN FOR CONTROL JOINT LOCATIONS.
 - PROVIDE 8" THICKENED SLAB UNDER LANDING COLUMNS. EXTEND THICKENED AREA 24" BEYOND COLUMN CENTER LINES ON ALL SIDES.
 - ALL CONCRETE WORK SHALL CONFORM TO ACI 301 SPECIFICATIONS FOR STRUCTURAL CONCRETE. BUILDING SHALL BE CONSTRUCTED TO ACI 308.
 - MAINTAIN MIN. 2" OF COVER AT ALL REINFORCING FOOTINGS.
 - ALL PARTIAL HEIGHT PARTITION WALLS SHALL BE BRACED BY PILASTER OR CRIPPER WALLS @ 16" MAX. FOR 6" WALLS AND 15" MAX. FOR 8" WALLS. COORDINATE EXACT LOCATION AND SPACING OF ALL MASONRY WALLS WITH ARCH. DRAWINGS.

- MASONRY WALL REINFORCING NOTES:**
- LOCATE REINFORCING IN CENTER OF WALL AND GROUT SOLID.
 - HORIZONTAL JOINT REINFORCING SHALL BE HOT DIPPED GALVANIZED REINFORCING WITH (2)-9 GA. RODS AND 9 GA. CROSS WIRES AT 16" O.C. IN ALL EXTERIOR WALLS.
 - INTERIOR WALL HORIZONTAL JOINT REINFORCING SHALL BE (2) 9 GA. WIRE RODS & 9 GA. CROSS WIRES AT 16" O.C.
 - ADDITIONAL VERTICAL REINFORCING REQUIRED AT: (COORD. WITH DETAIL 4/S3.1)
EACH SIDE OF OPENINGS, WALL INTERSECTIONS, ENDS OF WALLS, EACH SIDE OF CONTROL JOINTS (COORD. W/ ARCH.), PILASTERS AS DETAILED, AS NOTED AND DETAILED ON DRAWINGS.
 - PROVIDE BOND BEAMS: (COORD. WITH DETAIL 4/S3.1)
BOTTOM AND TOP OF OPENINGS, JOIST AND DECK BEARING (CONTINUOUS), TOP COURSE OF MASONRY WALLS, AS NOTED AND DETAILED ON DRAWINGS.
PROVIDE CORNER BARS AT ALL BOND BEAM INTERSECTIONS.
 - PROVIDE MATCHING DOWEL FOR VERTICAL REINFORCING INTO FOUNDATION AND BOND BEAM AT ROOF.
 - FILL ALL MASONRY CELLS BELOW FINISHED FLOOR. WHERE GRADE IS ABOVE FINISHED FLOOR, FILL ALL CELLS BELOW GRADE. FILL MATERIAL SHALL BE 2000 PSI (M9) GROUT.
 - WHERE ADDITIONAL BARS ARE REQUIRED @ OPENINGS LOCATE BARS AT 3" FROM INSIDE AND OUTSIDE FACE OF MASONRY IN TWO LAYERS.
 - ALL EXTERIOR SHEAR WALLS SHALL BE INTERMEDIATE REINFORCED MASONRY SHEAR WALLS AND SHALL BE REINFORCED USING THE FOLLOWING CRITERIA:
VERTICAL REINF.: #5 BARS @ 4" O.C. (I.N.G. ON PLANS)
HORIZONTAL REINF.: AS NOTED IN DETAILS @ 16" O.C. (HOOK ALL HORIZONTAL BOND BEAM REINFORCING AROUND LAST BAR WITH A STANDARD END HOOK.)
 - ALL INTERIOR SHEAR WALLS MARKED SW # SHALL BE REINFORCED PER 8/S3.2.
 - DENOTES CMU PIERS. SEE 10/S3.1 FOR THE DETAILS.



Structural Column Schedule

| Type Mark | Type | Comments |
|-----------|------------|----------|
| C1 | HSS8X8X1/4 | |
| C2 | HSS8X8X3/8 | |
| C3 | HSS8X8X1/2 | |
| C4 | HSS8X8X5/8 | |
| C5 | HSS4X4X1/4 | |
| C6 | HSS6X6X1/4 | |

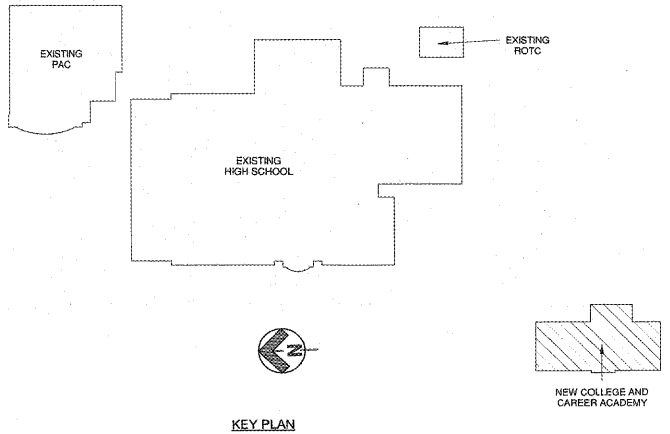
Concrete Pier Schedule

| Type Mark | Size | Reinforcing | Comment |
|-----------|---------|-------------------|---------|
| P2.0 | 24 x 24 | SEE DETAIL 3/S3.3 | |

Structural Foundation Schedule - 2500 psf Bearing Pressure

| Mark | Footing Dimensions | Reinforcing | Anchor Embedment |
|-------|-------------------------|------------------------------|------------------|
| F4.0 | 4'-0" X 4'-0" X 1'-3" | (4)#5 AT BOTTOM, EW. | 1'-0" |
| F4.0A | 4'-0" X 4'-0" X 1'-3" 2 | (5)#5 AT TOP & BOTTOM, EW. | 1'-0" |
| F6.0 | 6'-0" X 6'-0" X 1'-6" | (7)#6 AT BOTTOM, EW. | 1'-2" |
| F7.0 | 7'-0" X 7'-0" X 1'-6" | (8)#6 AT BOTTOM, EW. | 1'-2" |
| F7.0A | 7'-0" X 11'-4" X 1'-6" | #6 @ 12" O.C. AT BOTTOM, EW. | 1'-2" |
| F7.5 | 7'-6" X 7'-6" X 1'-6" | (8)#6 AT BOTTOM, EW. | 1'-2" |
| F8.0 | 8'-0" X 8'-0" X 1'-6" | (9)#6 AT BOTTOM, EW. | 1'-2" |
| F8.5 | 8'-6" X 8'-6" X 1'-6" | (9)#6 AT BOTTOM, EW. | 1'-2" |
| F9.0 | 9'-0" X 9'-0" X 2'-0" | (10)#6 AT BOTTOM, EW. | 1'-6" |
| F9.5 | 9'-6" X 9'-6" X 2'-0" | (11)#7 AT BOTTOM, EW. | 1'-6" |
| F10.0 | 10'-0" X 10'-0" X 2'-0" | (11)#7 AT BOTTOM, EW. | 1'-6" |
| F12.5 | 12'-6" X 12'-6" X 2'-0" | (13)#7 AT BOTTOM, EW. | 1'-6" |
| F13.0 | 13'-0" X 13'-0" X 2'-4" | (13)#8 AT BOTTOM, EW. | 1'-6" |
| F13.5 | 13'-6" X 13'-6" X 2'-4" | (14)#8 AT BOTTOM, EW. | 1'-6" |

* SEE DETAIL 3/S3.3 FOR THE ANCHOR EMBEDMENT AT CONCRETE PIER.



ROBERTSON INDIA ROOF ARCHITECTS ENGINEERS
 3460 Preston Ridge Rd. Suite 275-A Marietta, GA, 30065
 770.674.2600 / www.rif.com



(Facility No. 642-0198)
Dawson County College and Career Academy
 Dawsonville, Georgia
Dawson County Schools
 Overall Squarefootage = 35,800 SF
 IUS = 74 (Existing) + 11 (New) = 85 IUS
 FTE = 1625

REVISIONS

| No. | Description |
|-----|-------------|
| | |
| | |
| | |
| | |
| | |
| | |
| | |
| | |
| | |

FOUNDATION PLAN

DATE: 05-07-2018
 PROJECT NUMBER: 17-303
 SHEET NUMBER: S1.1