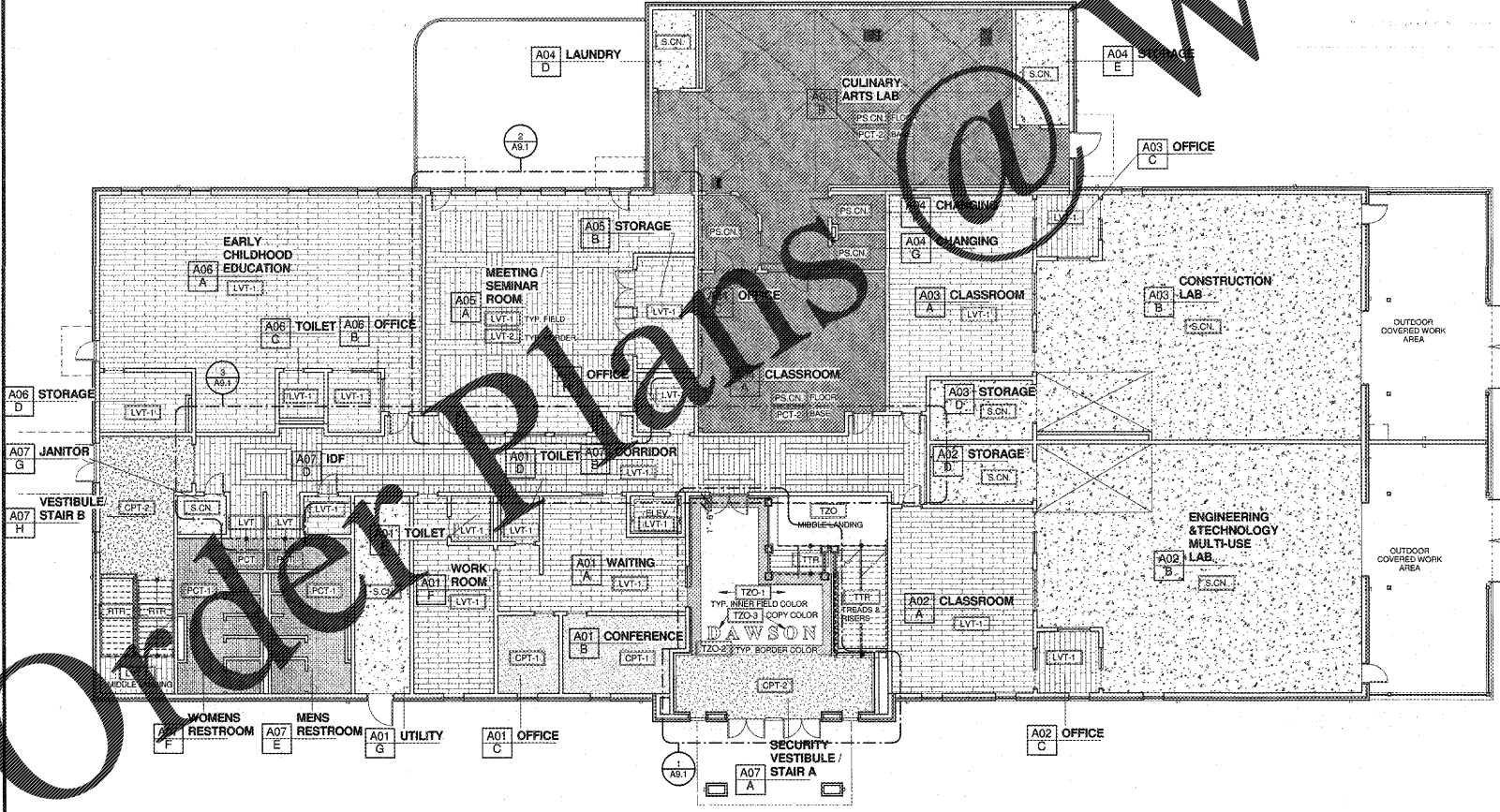
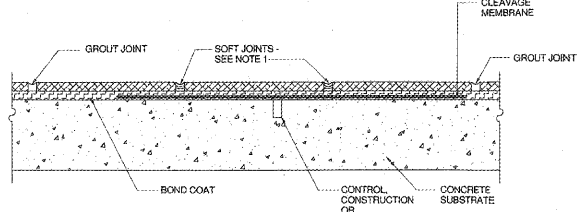


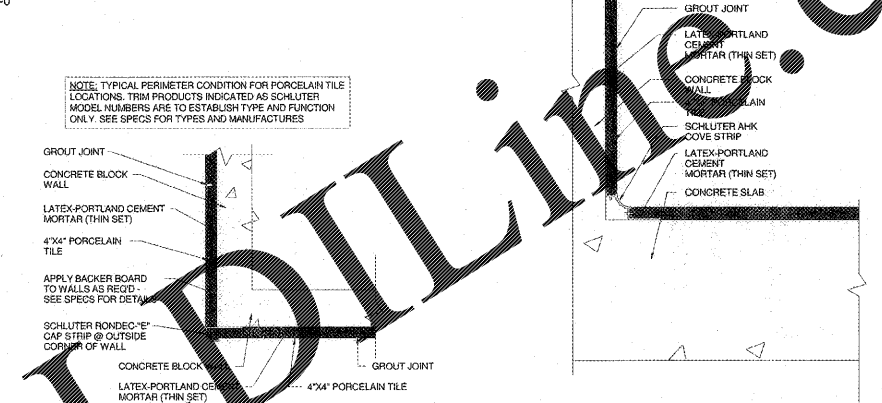
2 OVERALL UPPER LEVEL FLOOR PATTERN PLAN
A9.0 3/32" = 1'-0"



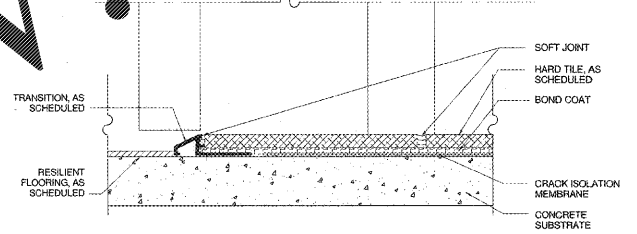
1 OVERALL LOWER LEVEL FLOOR PATTERN PLAN
A9.0 3/32" = 1'-0"



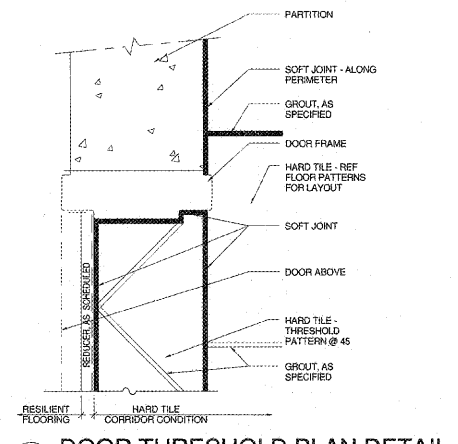
NOTE: WHERE SOFT JOINT IS REQUIRED IN CERAMIC TILE OVER SUBSTRATE CONTROL JOINTS, SEALANT TO MATCH GROUT.
A CONTROL JOINT DETAIL
A9.0 6" = 1'-0"



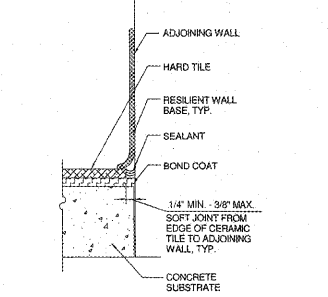
NOTE: TYPICAL PERIMETER CONDITION FOR PORCELAIN TILE LOCATIONS. TRIM PRODUCTS INDICATED AS SCHLUTER MODEL NUMBERS ARE TO ESTABLISH TYPE AND FUNCTION ONLY. SEE SPECS FOR TYPES AND MANUFACTURERS.
B TILE WALL BASE CORNER DETAIL
A9.0 6" = 1'-0"



E DOOR THRESHOLD SECTION DETAIL
A9.0 6" = 1'-0"



D DOOR THRESHOLD PLAN DETAIL
A9.0 3" = 1'-0"



F WALL BASE DETAIL
A9.0 6" = 1'-0"

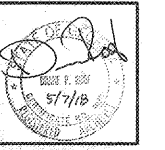
FLOOR COVERING PLAN LEGEND

- GENERAL NOTES
- A. THE FINISHES DEFINED ON THIS DRAWINGS SHALL BE USED FOR BID PURPOSES ONLY AND ONLY TO DEFINE SCOPE OF FINISHING EXTENTS. PRIOR TO INSTALLATION OF FINISHES, CONTRACTOR TO ACQUIRE AN UPDATED AND FINAL SET OF INTERIOR FINISH PLANS.
 - B. PRIOR TO THE PURCHASE AND INSTALLATION OF FINISHES, CONTRACTOR TO VERIFY THAT THIS DRAWING REPRESENTS THE FINAL SET OF FLOOR PATTERN PLANS.
 - C. FINISHING DESIGNATIONS DEFINED ON THIS SHEET TO BE USED IN CONJUNCTION WITH "COLOR SCHEDULE" REFERENCE SPECIFICATIONS FOR FLOORING INSTALLATION STANDARDS AND REQUIREMENTS.
 - D. IF A FLOOR FINISH COLOR IS NOT DEFINED ON THE "COLOR SCHEDULE", CONTRACTOR TO SUBMIT CHOSEN MANUFACTURER'S COLOR OPTIONS TO ARCHITECT FOR COLOR SELECTION.
 - E. SEE PLUMBING DRAWINGS FOR REQUIRED SLOPES IN SLAB.
 - F. FLOORING AND PATTERN TRANSITIONS TO OCCUR AT DOORWAY THRESHOLDS, WHERE APPLICABLE, (UNLESS NOTED OTHERWISE, (EXCEPTIONS NOTED IN THESE DRAWINGS)) FOR HARD TILE APPLICATIONS.
 - G. SEE DETAIL A9.0 HARD TILE INSTALLATION REQUIREMENTS AT CONTROL JOINTS.
 - H. SEE DETAILS B & C9.0 FOR HARD TILE INSTALLATION REQUIREMENTS AT CRACKS IN SLAB.
 - H.C. SEE DETAIL D9.0 & E9.0 FOR HARD TILE INSTALLATION REQUIREMENTS AT WALL CONDITIONS AND DOOR THRESHOLDS.
 - H.D. SEE DETAIL Q9.0 & H9.0 FOR RESTROOM HARD TILE INSTALLATION REQUIREMENTS AT WALL CONDITIONS.
 - I. SEE FINISH PLANS FOR ADDITIONAL INFORMATION.
 - J. CUT TILE CONSTRAINTS
 - J.A. DO NOT CUT TILE TO A MIN. OF 7" FOR 12" TILE, UNLESS NOTED OTHERWISE.
 - J.B. CUT TILE TO SIZE NEEDED ALONG PERIMETER APPLICATIONS, UNLESS NOTED OTHERWISE.

FLOOR COVERING PLAN SYMBOL LEGEND

REFERENCE	COLOR		
[LVT-1]	TYP. CLASSROOM	[XXX-#]	FLOOR COVERING DESIGNATION - SEE "COLOR SCHEDULE" FOR COLOR SPECIFICATION
[LVT-2]	TYP. CLASSROOM	[---+]	FLOOR TRANSITION LOCATION (IF OTHER THAN DOOR THRESHOLD)
[PCT-1]	4" TYP. FIELD	[*]	PATTERN START POINT
[CPT-1]	TYP. CARPET TILE		
[CPT-2]	WALK-OFF CARPET		
[PS-CN]	POLISHED W/SLIP RESISTANT COATINGS		
[S-CN]	SEALED CONCRETE		
[TZO-1]	MAIN ENTRY FIELD TERRAZZO		
[TZO-2]	MAIN ENTRY ACCENT		
[TZO-3]	MAIN ENTRY ACCENT		

ROBERTSON INDIA ROOF ARCHITECTS ENGINEERS
3400 Preston Ridge Rd., Suite 275 - A, Marietta, GA 30065
770.974.2697 / www.rir.com



Dawson County College and Career Academy
Dawsonville, Georgia
Dawson County Schools
Overall Squarefootage = 35,800 SF
FFE = 1025
Title = 74 (Existing) + 11 (New) = 85 ILL
Faculty No. 042-0198

REVISIONS

NO.	DESCRIPTION

DATE: 05-07-2018
PROJECT NUMBER: 17-303
SHEET NUMBER: A9.0