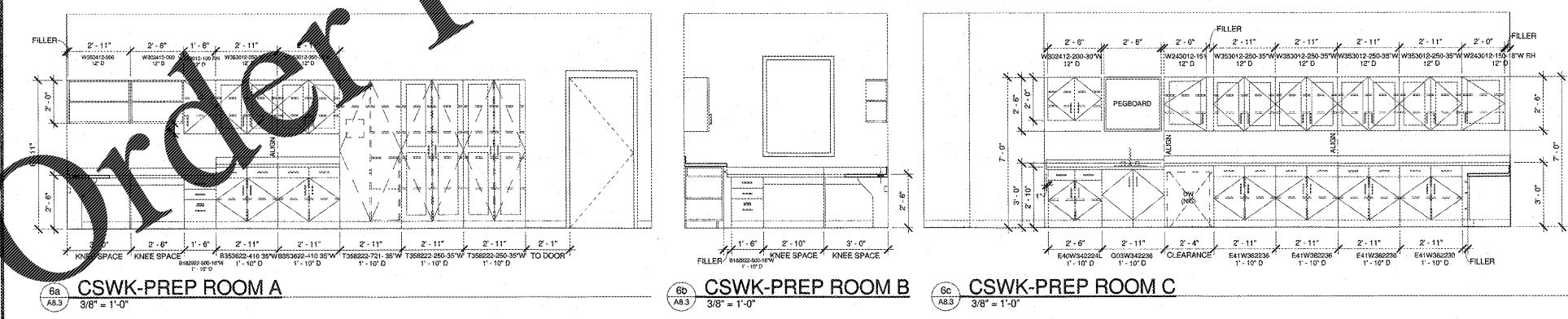
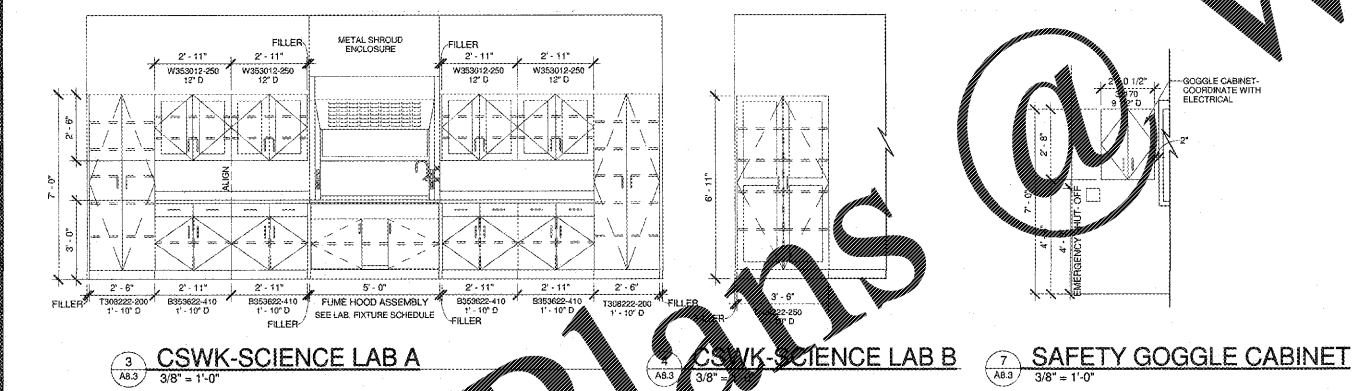
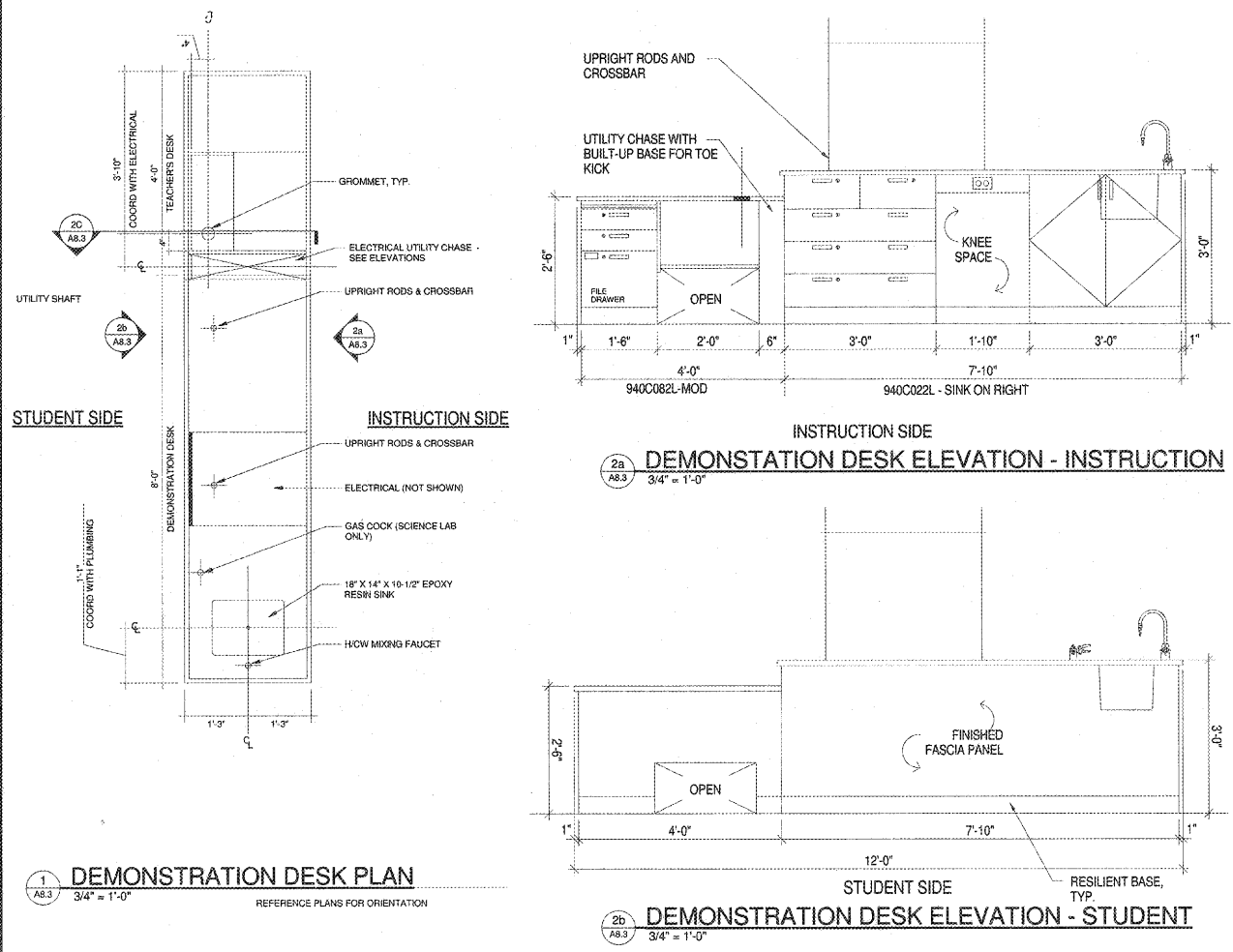


### LABORATORY FIXTURE & ACCESSORY LEGEND

| NAME  | QTY (EA) | MODEL No. | DESCRIPTION   |
|---|----------|-----------|---|
| <b>SCIENCE LAB STUDENT TABLES</b>                                       |          |           |   |
| SINK  | 1        | INCLUDED  | UNDERMOUNT SINK WITH OUTLET AND STOPPER   |
| WATER   | 1        | INCLUDED  | UNICAST COLD WATER/ GAS VANDAL RESISTANT FIXTURE WITH ANGLED GAS VALVE AND CHECK VALVE  |
| GAS   | 1        | INCLUDED  | UNICAST COLD WATER/ GAS VANDAL RESISTANT FIXTURE WITH ANGLED GAS VALVE AND CHECK VALVE  |
| POWER   | 1        | INCLUDED  | TWO (2) GFI DUPLEX ELECTRICAL FIXTURES, ONE ON EACH SIDE OF SINK AND ONE (1) QUAD BOX W/ 2 DUPLEX OUTLETS, MOUNTED INSIDE OF BASE |
| <b>SCIENCE LAB STUDENT TABLES - ADA STATION (SEE PLAN FOR LOCATION)</b> |          |           |   |
| SINK  | 1        | INCLUDED  | UNDERMOUNT SINK WITH OUTLET AND STOPPER   |
| WATER   | 1        | INCLUDED  | UNICAST COLD WATER/ GAS VANDAL RESISTANT FIXTURE WITH WRIST BLADE, ANGLED GAS VALVE AND CHECK VALVE                               |
| POWER   | 1        | INCLUDED  | UNICAST COLD WATER/ GAS VANDAL RESISTANT FIXTURE WITH WRIST BLADE, ANGLED GAS VALVE AND CHECK VALVE                               |
| GAS   | 1        | INCLUDED  | TWO (2) GFI DUPLEX ELECTRICAL FIXTURES, ONE ON EACH SIDE OF SINK AND ONE (1) QUAD BOX W/ 2 DUPLEX OUTLETS, MOUNTED INSIDE OF BASE |
| <b>FUME HOOD ASSEMBLY</b>   |          |           |   |
| FUME HOOD   | 1        | INCLUDED  | 6'-0" WIDE ADA APPROXIMATE FUME HOOD MODELING ENCLOSURE   |
| WORKSURFACE   | 1        | INCLUDED  | BLACK EPOXY RESIN WORKSURFACE   |
| CUPSINK   | 1        | INCLUDED  | EPOXY RESIN CUPSINK   |
| WATER   | 1        | INCLUDED  | REMOTE CONTROLLED HOT & COLD WATER VALVE  |
| GAS   | 1        | INCLUDED  | REMOTE CONTROLLED GAS   |
| POWER   | 1        | INCLUDED  | TWO (2) DUPLEX ELECTRICAL OUTLETS AND BLOWER SWITCH   |
| ALARM   | 1        | INCLUDED  | FACTORY INSTALLED, SAFETY MONITOR ALARM SYSTEM  |
| LIGHTING  | 1        | INCLUDED  | TWO-LAMP FLOURESCENT VAPOR PROOF LIGHT FIXTURE AND LIGHT SWITCH   |
| <b>SAFETY STATION ASSEMBLY</b>  |          |           |   |
| POWER/EYE WASH  | 1        | TBD       | FLOOR MOUNTED COMBINATION EYE WASH/ SHOWER - ADA COMPLIANT  |
| <b>PREP ROOM SINK ASSEMBLY AND ACCESSORIES</b>                          |          |           |   |
| SINK  | 1        | INCLUDED  | EPOXY RESIN, UNDERMOUNT   |
| FAUCET  | 1        | INCLUDED  | HW. CW MIXING FAUCET  |
| GAS   | 1        | INCLUDED  | DECK MOUNT, SINGLE SERVICE FIXTURE  |
| PEGBOARD  | 1        | INCLUDED  | EPOXY RESIN PEGBOARD WITH POLYPROPYLENE PEGS, SIZED AS SHOWN ON DRAWINGS  |
| DRIP TROUGH   | 1        | INCLUDED  | 2" DEEP STAINLESS STEEL DRIP TROUGH WITH DRIP HOSE  |
| DRIP SCREEN   | 1        | INCLUDED  | 2" DEEP STAINLESS STEEL DRIP TROUGH SCREEN  |

1. DEMONSTRATION TABLE IN SCIENCE LABS - SEE PLANS AND REFERENCE SPECIFICATION SECTION 12.34.50 FOR FURTHER INFORMATION  
2. ELECTRICAL TO PROVIDE ADDITIONAL POWER & DATA AT ADJACENT DESK - TO BE COORDINATED WITH CASEWORK - SEE ELEVATIONS FOR LOCATION AND EXTENTS  
3. ALL SCIENCE LAB STUDENT TABLES TO BE FIXED HEIGHT, EXCEPT FOR ADA STATION, WHICH SHALL BE MOTORIZED ADJUSTABLE HEIGHT



### CASEWORK LEGEND

GROMMET LOCATION, TYP.   
 CASEWORK ELEVATION INDICATOR

**GENERAL NOTES**

- SEE SPECIFICATIONS FOR MANUFACTURER AND FINISH REQUIREMENTS FOR ALL TYPES OF CASEWORK SHOWN. THESE DRAWINGS INCLUDE THE FOLLOWING TYPES OF CASEWORK:
  - LABORATORY CASEWORK AND FUME HOOD (SPECIFICATION SECTION 12345)
  - MANUFACTURED CASEWORK (SPECIFICATION SECTION 12370)
  - CUSTOM CASEWORK (SPECIFICATION SECTION 12370)
- ARCHITECT TO DEFINE ALL COLOR SELECTIONS ON MANUFACTURER'S SHOP DRAWINGS.
- IN ADDITION TO TYPICAL WALL INSTALLATION, RESILIENT BASE SHALL WRAP ALL BASE CABINETS SHOWN, UNLESS NOTED OTHERWISE.
- PROVIDE ADEQUATE SUPPORT FOR ALL FREESTANDING COUNTERTOPS. SUBMIT COUNTERTOP SUPPORT DETAILS ALONG WITH SHOP DRAWING FABRICATION DETAILS.
- ALL EXPOSED 2X4 NAILERS TO BE PAINTED TO MATCH ADJACENT WALL COLOR.
- SPECIAL CONDITION ELECTRICAL, MECHANICAL AND PLUMBING REQUIREMENTS GENERALLY DEFINED IN THESE DRAWINGS. REFERENCE WEEP FOR ACTUAL EXTENTS.
- PROVIDE FILLER PANELS AS NEEDED AT ALL WALLS ADJACENT TO BASE AND WALL CABINETS OR WHERE INDICATED IN ELEVATIONS. FILLERS TO BE THE SAME COLOR AS ADJACENT BASE OR WALL CABINET FACE.
- ALIGN WALL CABINET SEAMS WITH BASE CABINET SEAMS, UNLESS INDICATED OTHERWISE.
- AN "L" DESIGNATION AFTER MODEL NUMBER INDICATES A LOCKABLE CABINET.

**12345 LABORATORY CASEWORK**

- MODEL NUMBERS INDICATED FOR ALL LABORATORY CASEWORK AND ACCESSORIES ARE BY KEWANE AND SHALL SERVE AS A BASIS OF DESIGN TO ESTABLISH TYPE, SIZE AND FUNCTION ONLY.
- COUNTERTOP MATERIAL FOR ALL LABORATORY CASEWORK TO BE EPOXY RESIN. ALL COUNTERTOPS TO RECEIVE A 4" RADIUS BACKSPASH.

**CASEWORK DRAWING NOTES**

- CUT RESILIENT BASE AT ADA CUSTOM SINK CABINET. INTEGRATED TOE KICK TO BE FINISHED WITH PLASTIC LAMINATE THAT MATCHES ADJACENT RESILIENT BASE.
- 3" DIAMETER (MIN.) GROMMET LOCATION. GROMMET TO BE 4" TO CENTERLINE FROM FACE ADJACENT WALL, TYP.
- COUNTERTOP SUPPORT, TYP. - SEE DETAIL B/A8.0.
- 2X4 CONTINUOUS NAILER, TYP.
- INSIDE PLASTIC LAMINATE OF OPEN SHELVES TO MATCH ADJACENT. EXPOSED PLASTIC LAMINATE END PANEL COLOR.

**ROBERTSON INDIA ROOF ARCHITECTS ENGINEERS**  
3460 Preston Ridge, Marietta, GA 30067  
770.474.2600 / www.rifa.com

(Faculty No. 0420106)

**Dawson County College and Career Academy**  
Dawsonville, Georgia  
**Dawson County Schools**  
Overall Squarefootage = 35,800 SF  
FFE = 1025

REVISIONS

**LABORATORY CASEWORK ELEVATIONS AND DETAILS**

DATE: 05-07-2018  
PROJECT NUMBER: 17-303  
SHEET NUMBER: A8.3

Order Plans

WWW.LDMLINE.COM