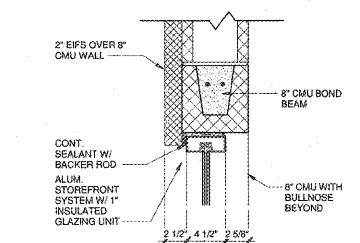
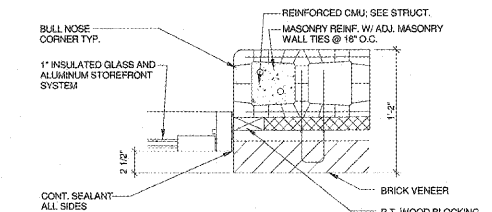


Order Plans @

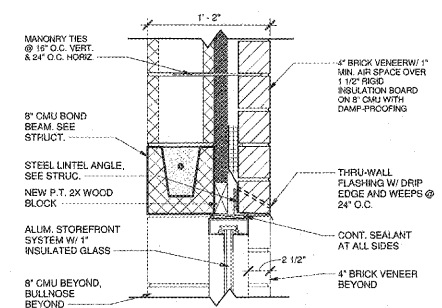
16 HEAD DETAIL - EXT. WINDOW
1 1/2" = 1'-0"



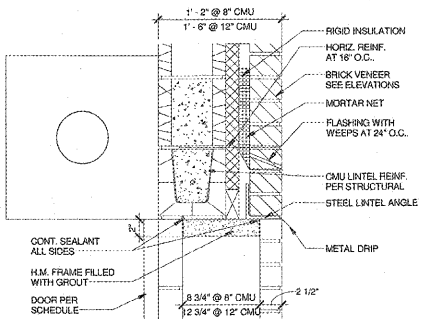
9 JAMB DETAIL - EXT. STOREFRONT
1 1/2" = 1'-0"



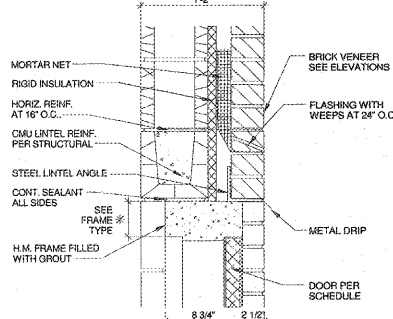
8 HEAD DETAIL - EXT. STOREFRONT
1 1/2" = 1'-0"



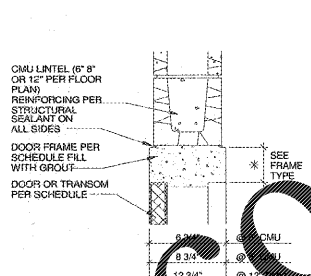
5 HEAD DETAIL - COILING DOOR
1 1/2" = 1'-0"



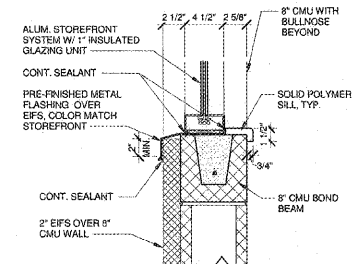
3 HEAD DETAIL - EXT. HM
1 1/2" = 1'-0"



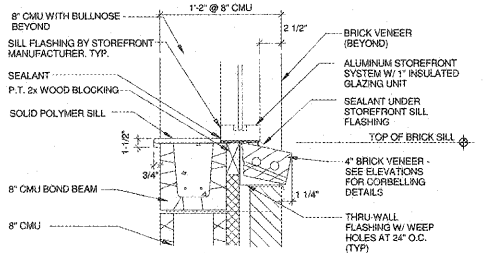
1 HEAD DETAIL - HM
1 1/2" = 1'-0"



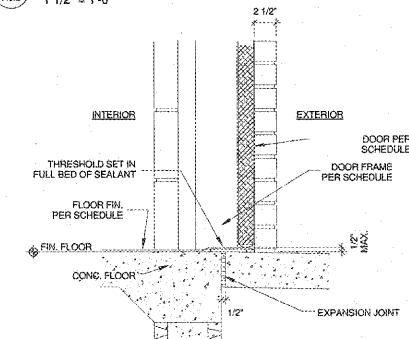
17 SILL DETAIL - EXT. WINDOW
1 1/2" = 1'-0"



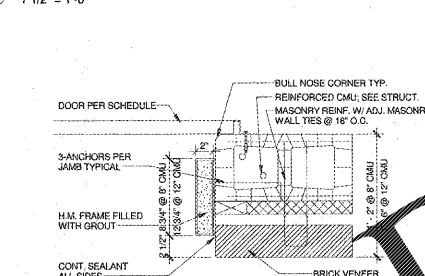
10 SILL DETAIL - EXT. STOREFRONT WINDOW
1 1/2" = 1'-0"



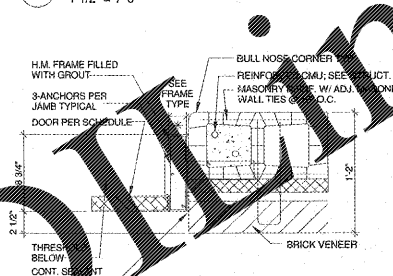
7 SILL DETAIL - EXT. DOOR
1 1/2" = 1'-0"



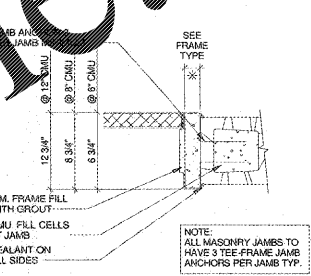
6 JAMB DETAIL - COILING DOOR
1 1/2" = 1'-0"



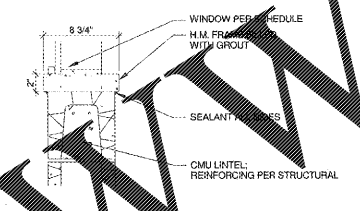
4 JAMB DETAIL - EXT. HM
1 1/2" = 1'-0"



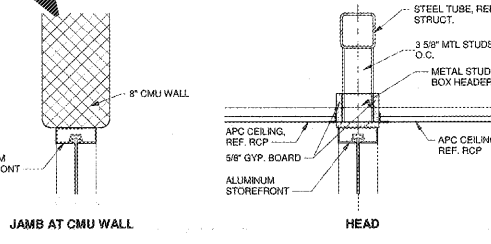
2 JAMB DETAIL - HM
1 1/2" = 1'-0"



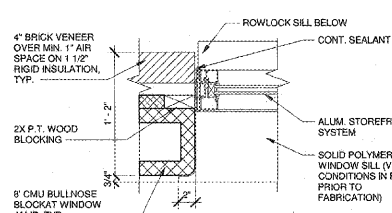
18 SILL DETAIL - HM WINDOW
1 1/2" = 1'-0"



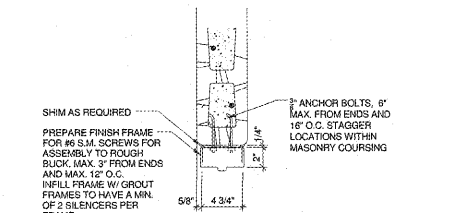
14 INTERIOR STOREFRONT DETAILS
1 1/2" = 1'-0"



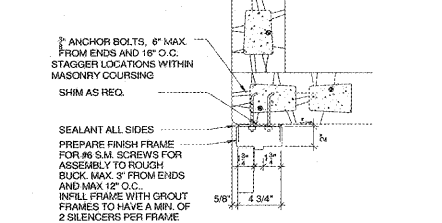
15 JAMB DETAIL - EXT. WINDOW
1 1/2" = 1'-0"



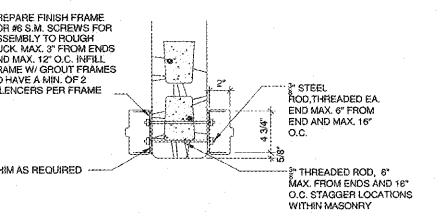
13 JAMB DETAIL - TOILET STALL END
1 1/2" = 1'-0"



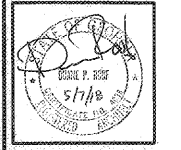
11 JAMB DETAIL - TOILET STALL
1 1/2" = 1'-0"



12 JAMB DETAIL - TOILET STALL
1 1/2" = 1'-0"



ROBERTSON ARCHITECTS ENGINEERS
3460 Preston Ridge Rd. Suite 275
Marietta, GA 30065
770.974.2699 / www.rba.com



Faculty No. 042-0198

Dawson County College and Career Academy
Dawsonville, Georgia
Dawson County Schools
Overall Squarefootage = 35,800 SF
LITE = 1027

NO.	REVISIONS

DOOR AND WINDOW DETAILS
DATE: 05-07-2018
PROJECT NUMBER: 17-303
SHEET NUMBER: A6.2