

NOTE: SIGNAGE MOUNTING TO BE COMPLIANT WITH CURRENT ADA ACCESSIBILITY CODE

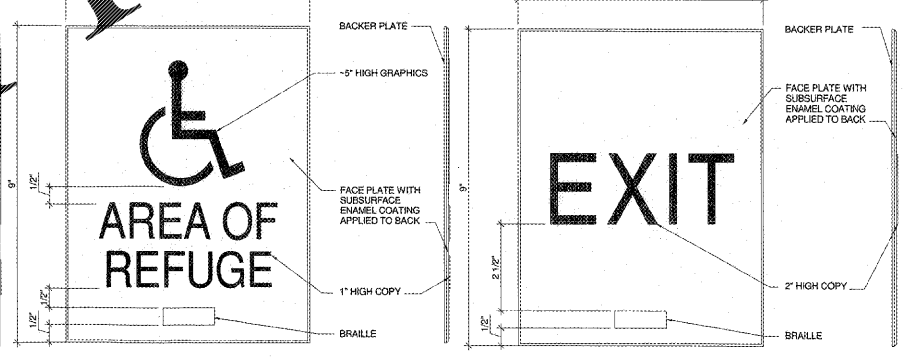
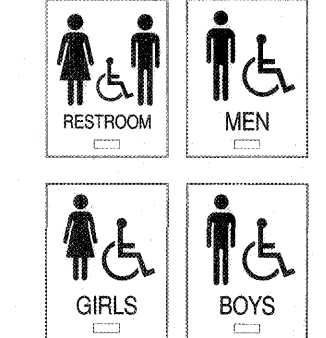
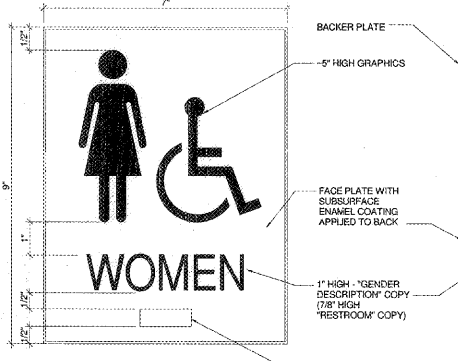
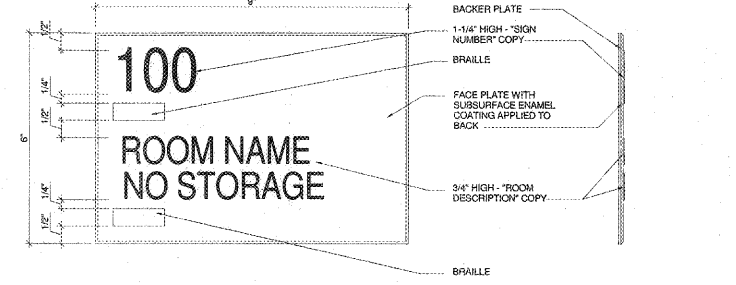
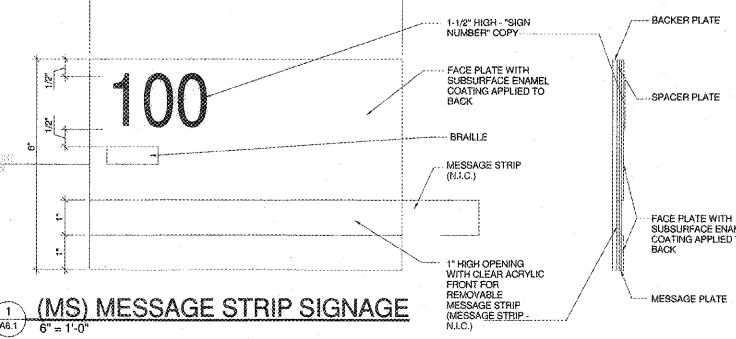
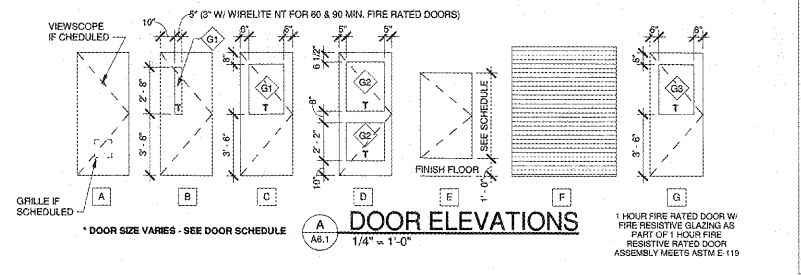
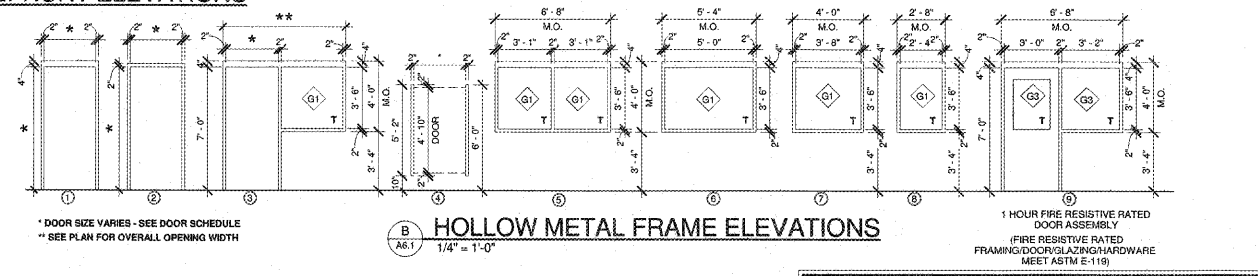
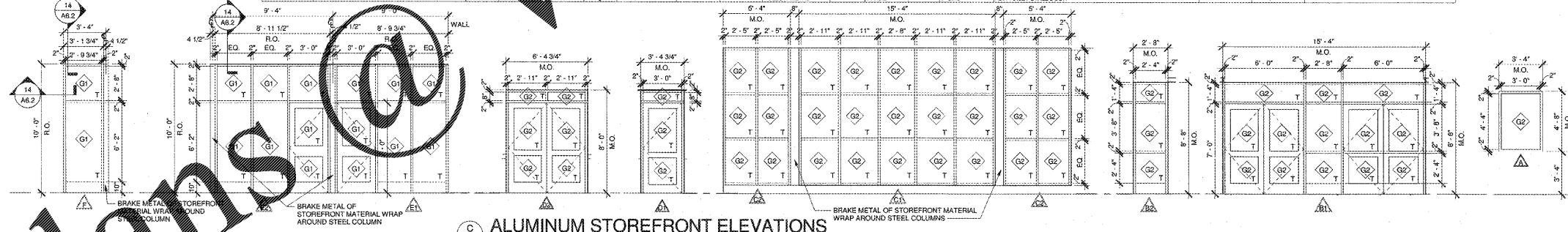
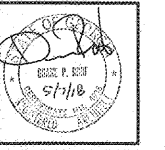


Table with columns: DOOR NO, DESCRIPTION, WIDTH, HEIGHT, THICKNESS, ELEVATION, MATERIAL, FIRE RATING, ELEVATION, MATERIAL, HEAD, SILL, PARTITION, REMARKS, SIGN TYPE, GRAPHICS, SIGN NAME.



GLAZING NOTES: GENERAL NOTES, INTERIOR GLAZING, EXTERIOR GLAZING, INTERIOR FIRE RESISTANCE RATED GLAZING.

ROBERTSON INDIA ROOF ARCHITECTS ENGINEERS



Dawson County College and Career Academy, Dawsonville, Georgia, Dawson County Schools

REVISIONS table, Date: 05-07-2018, Project Number: 17-303, Sheet Number: A6.1