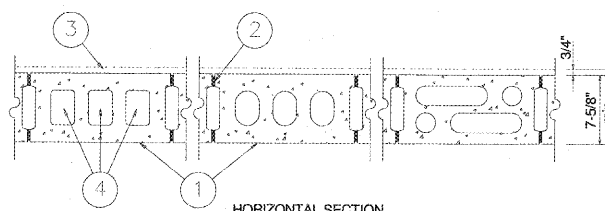
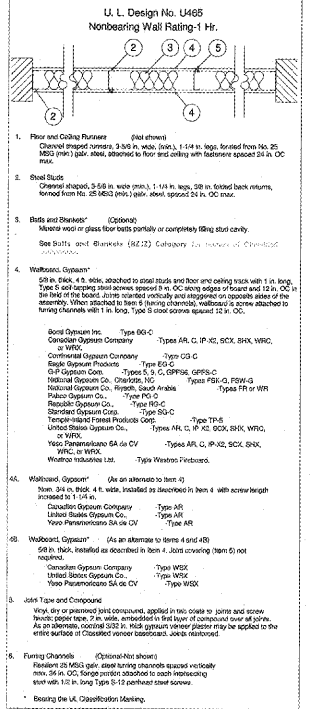


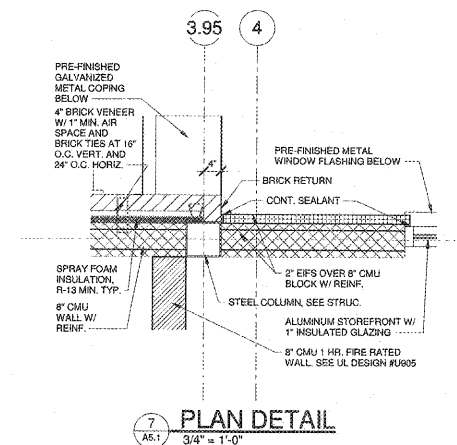
U. L. Design No. U905
Bearing Wall Rating-2 Hr.
Nonbearing Wall Rating-2 Hr.



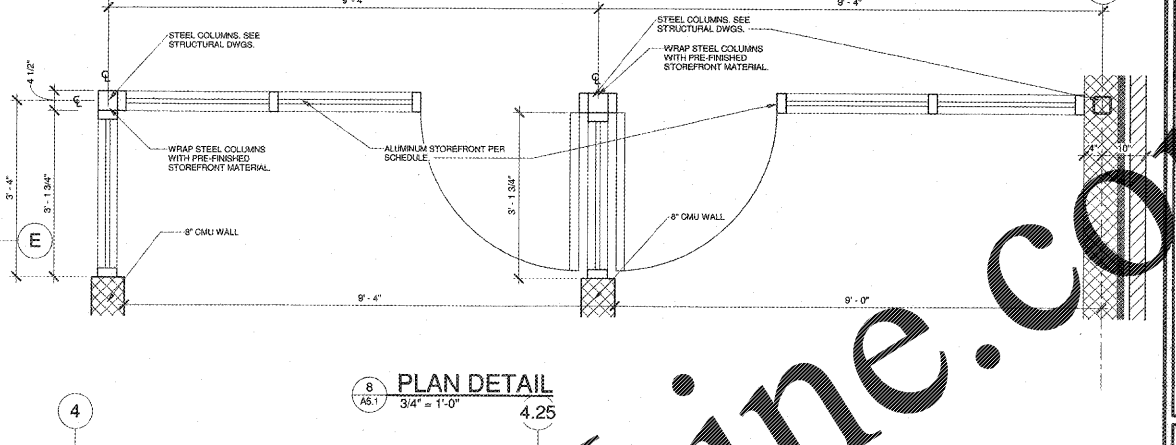
- Concrete Blocks*-Various designs. Classification D-2 (2 hr.). See Concrete Blocks category for lists of eligible manufacturers.
 - Mortar-Blocks laid in full bed of mortar, nom. 3/8 in. thick, of not less than 2-1/4 and not more than 3-1/2 parts of clean, sharp sand to 1 part Portland cement (proportioned by volume) and not more than 50 percent hydrated lime (by cement volume). Vertical joints staggered.
 - Portland Cement Stucco or Gypsum Plaster-Add 1/2 hr. to Classification if used. Where combustible members are framed in wall, plaster or stucco must be applied on the face opposite framing to achieve a max. Classification of 1-1/2 hr. Attached to concrete blocks (Item 1).
 - Loose Masonry Fill-If all core spaces are filled with loose dry expanded slag, burned clay or shale (rotary kiln process), water repellent vermiculite masonry fill insulation, or silicone treated perlite loose fill insulation, add 2 hr. to Classification.
 - Foamed Plastic*-(Optional-Not Shown)- 1-1/2 in. thick max., 4 ft. wide sheathing attached to concrete blocks (Item 1).
BPB America Inc.
BPB Celotex-Type Thermax
- * Bearing the UL Classification Marking.



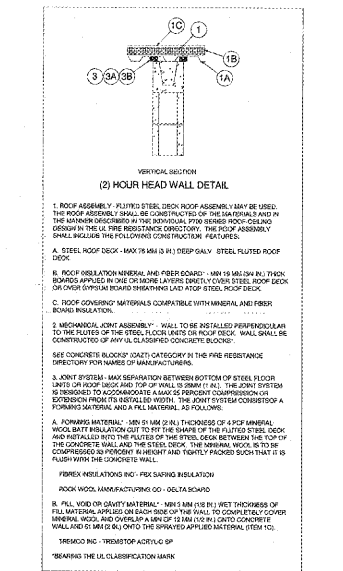
UL DETAIL U465
12" = 1'-0"



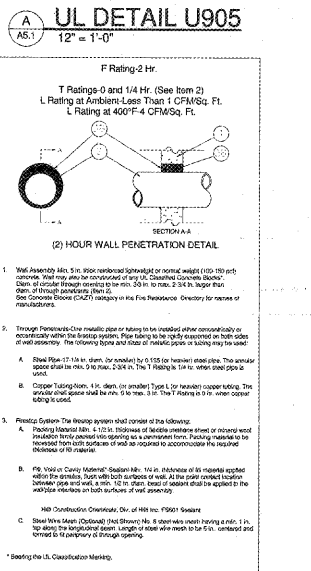
PLAN DETAIL
3/4" = 1'-0"



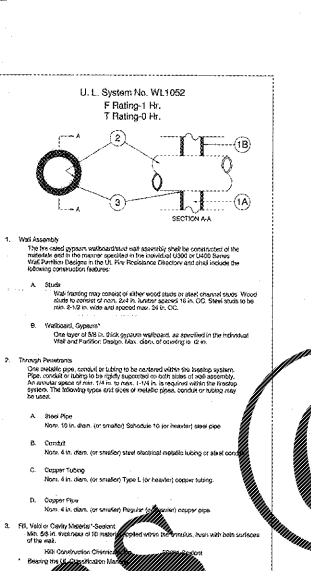
PLAN DETAIL
3/4" = 1'-0"



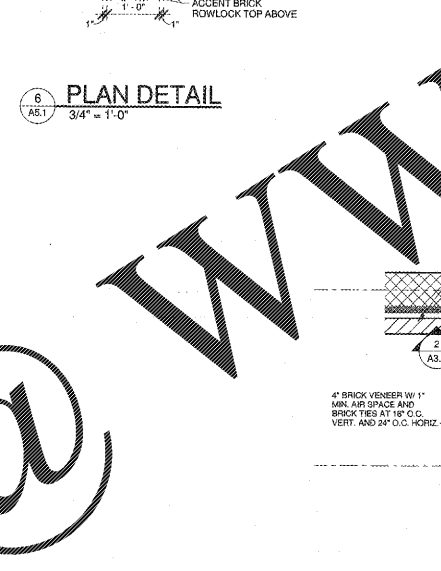
UL DETAIL U905
12" = 1'-0"



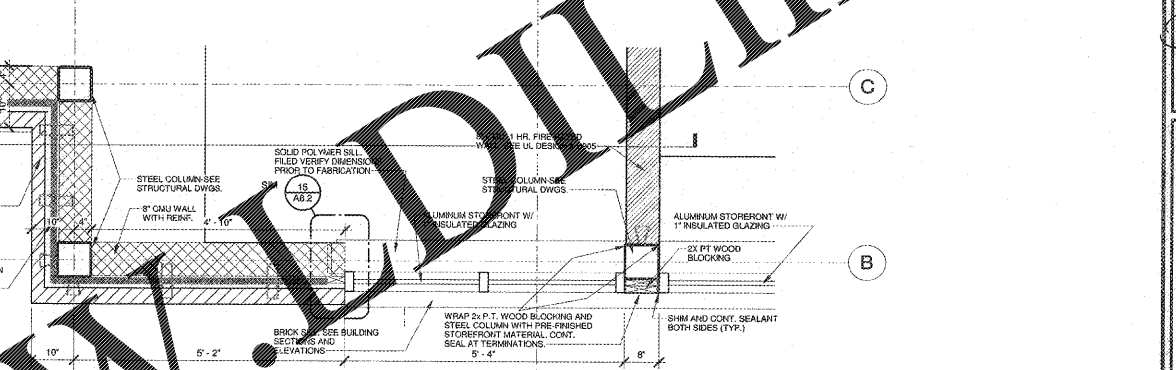
UL DETAIL HW-D-0329
12" = 1'-0"



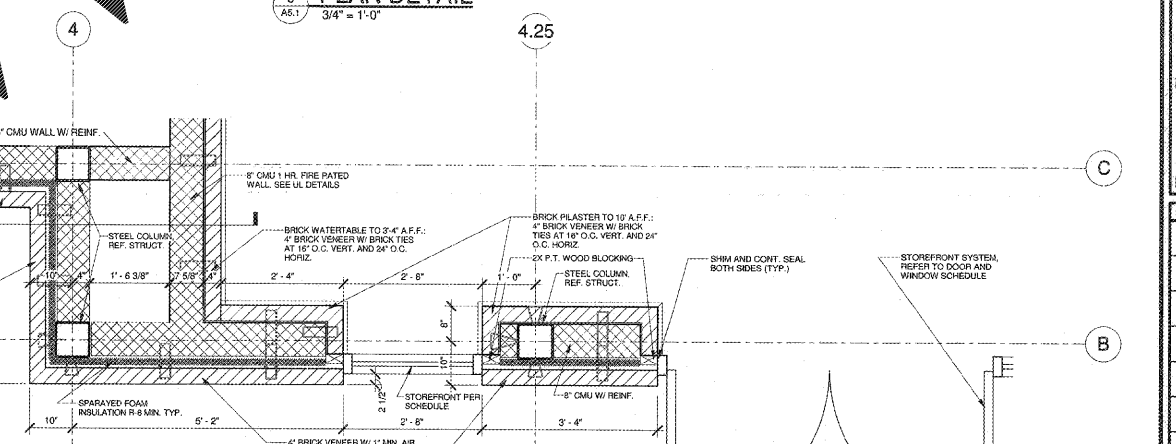
UL DETAIL WJ-1021
12" = 1'-0"



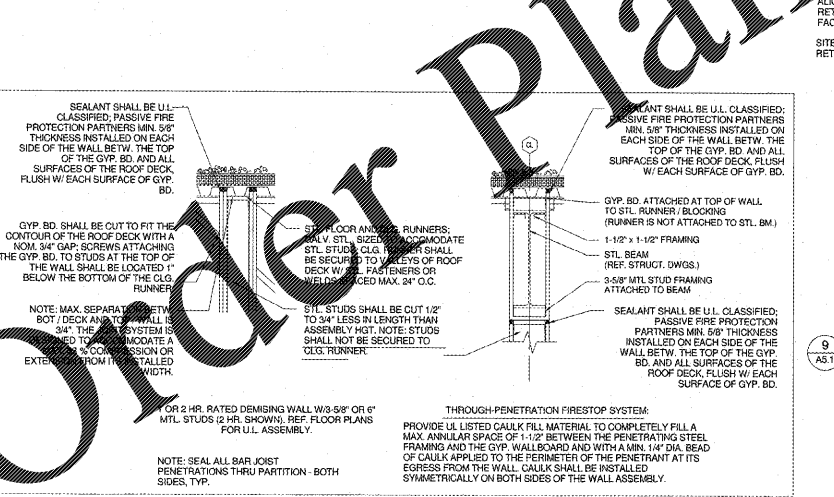
UL DETAIL WL-1052
12" = 1'-0"



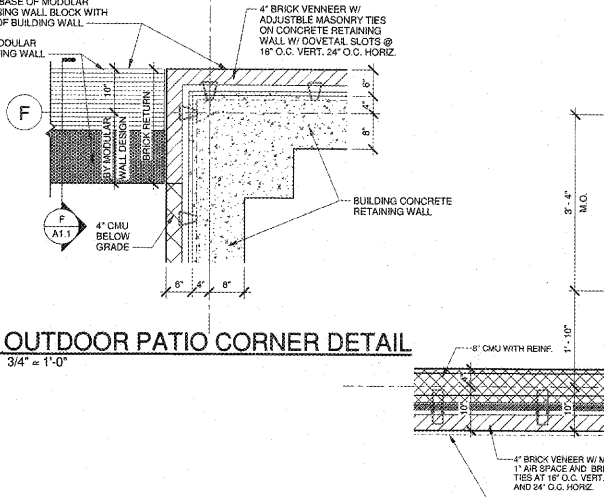
PLAN DETAIL
3/4" = 1'-0"



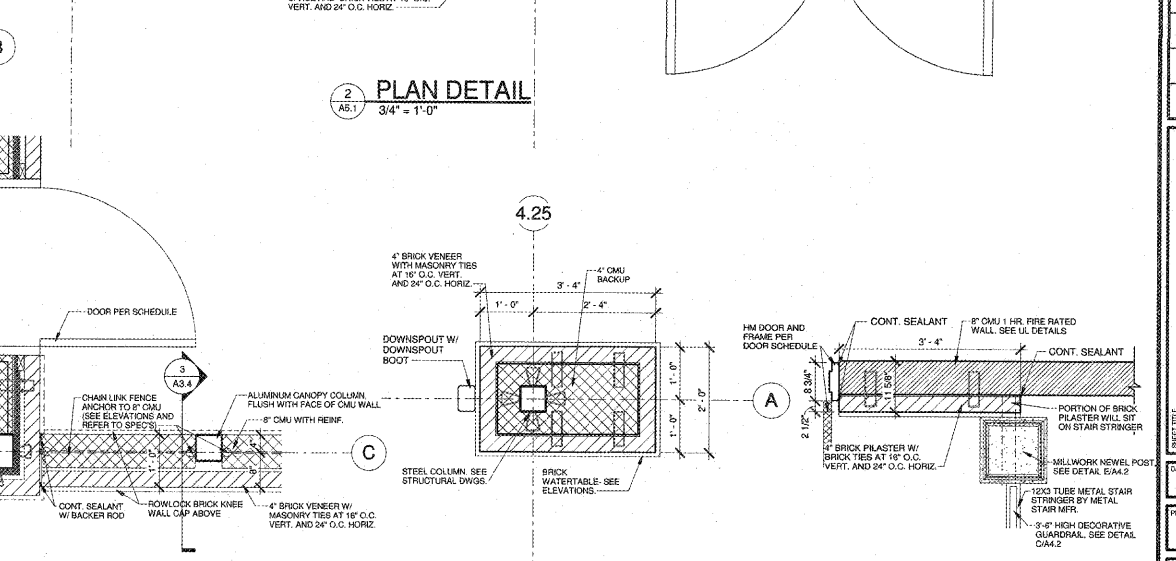
PLAN DETAIL
3/4" = 1'-0"



UL DETAIL HW-D-0024
12" = 1'-0"



OUTDOOR PATIO CORNER DETAIL
3/4" = 1'-0"



PLAN DETAIL
3/4" = 1'-0"

ROBERTSON INDIA ROOF ARCHITECTS & ENGINEERS
3400 Preston Ridge Rd., Suite 275, Marietta, GA, 30005
770.074.2600 / rindia@robertsonindiaroof.com

Dawson County College and Career Academy
Dawsonville, Georgia
FOR: **Dawson County Schools**
Overall Squarefootage = 35,800 SF
100% = 74' (Building) + 11' (New) = 85' UL

REVISIONS

DATE: 05-07-2018
PROJECT NUMBER: 17-303
SHEET NUMBER: A5.1