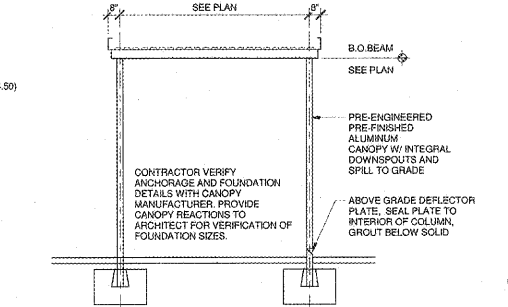


3 CANOPY OVER DRIVE SECTION
1/8" = 1'-0"

6 CANTILEVER CANOPY ALONG DRIVE
1/4" = 1'-0"

2 SUSPENDED ALUM CANOPY DETAIL
1/2" = 1'-0"

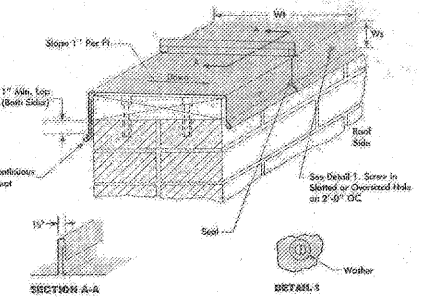
1 ROOF HATCH DETAIL
1" = 1'-0"



5 TYPICAL ALUMINUM CANOPY DETAIL
1/4" = 1'-0"

7 ALUMINUM CANOPY DETAIL-STEP
1/4" = 1'-0"

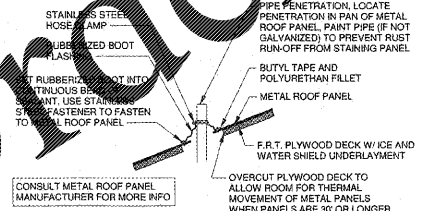
8 ALUMINUM CANOPY DETAIL-WALL
1/4" = 1'-0"



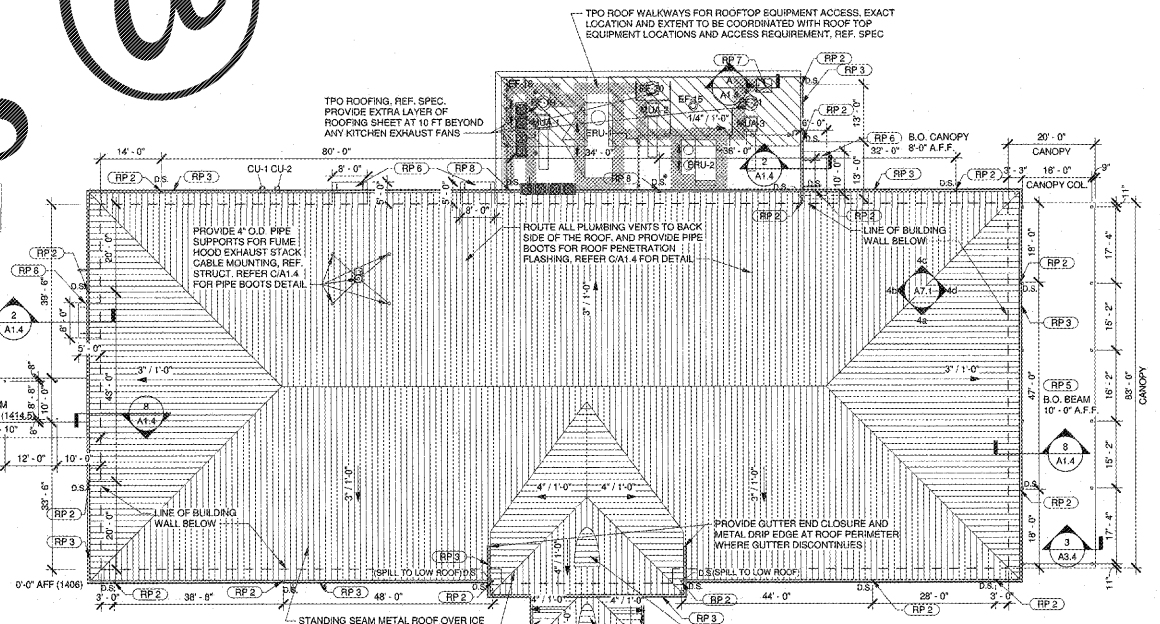
B COPING DETAIL
1" = 1'-0"



4 CONNECTING CANOPY ELEV
1/16" = 1'-0"



C METAL ROOF PIPE BOOT DETAIL
1 1/2" = 1'-0"

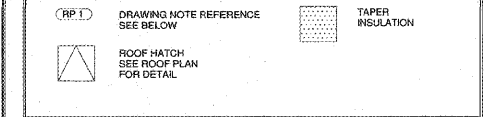


1 ROOF PLAN
1/16" = 1'-0"

ROOF PLAN LEGEND

- GENERAL NOTES
- PROVIDE POSITIVE DRAINAGE ALONG ENTIRE ROOF SURFACE. PROVIDE MIN. 1/4" PER FOOT SLOPE AT ALL FLAT ROOF SURFACES.
 - ALL ROOF DRAINAGE AT DOWNSPOUTS INTO STORM SEWER SYSTEM UNLESS NOTED OTHERWISE. REFER TO CIVIL DRAWINGS.
 - REFER TO STRUCTURAL DRAWINGS FOR FRAMING AT ROOF OPENINGS.
 - CRICKET WITH TAPERED INSULATION @ HIGH SIDE OF ALL ROOF PENETRATIONS.
 - ALL CORNERS OF PRE-FINISHED GALVANIZED METAL COPING SHALL BE SHOP FABRICATED WITH EXPANSION JOINTS AT 2'-0" FROM CORNERS.
 - PROVIDE CONTINUOUS SEALANT AND BACKER ROD AT ALL JUNCTURES BETWEEN DISSIMILAR MATERIALS. DOWNCORNING #790.
 - PROVIDE CLOSURE END CAPS AND 90 DEGREE GRADIENTS AT ALL EXPANSION JOINTS AND END WALL CAPS AT GRAVELSTOPS. TYPICAL.
 - SEAL ALL METAL TO METAL CONNECTIONS WITH DOWNCORNING #790 (NO CLEAR SILICONE SEALANT SHALL BE ALLOWED).
 - SEAL ALL METAL COPING STANDING SEAM JOINTS WITH DOWNCORNING #790. TYPICAL. FASTEN ALL PRE-FINISHED GALVANIZED METAL COPING WITH CONTINUOUS CLEAT AT FRONT AND REAR. PROVIDE GROMMETTED FASTENERS AT 2'-0" O.C. AT REAR. ALL JOINTS IN COPING SHALL BE STANDING SEAM PER "SMACNA" STANDARDS (PLATE#70).
 - PROVIDE SPLASH BLOCK AT ALL DOWNSPOUTS THAT DISCHARGE ONTO ROOF.
 - ALL PLUMBING AND ROOF VENTS TO BE A MIN. OF 10'-0" AWAY FROM MECHANICAL ROOF TOP UNIT FRESH AIR INTENTS.

ROOF PLAN SYMBOL LEGEND



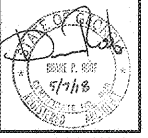
ROOF PLAN DRAWING NOTES

RP 1	6" PRE-FINISHED METAL OGEE TYPE GUTTER
RP 2	4" x 6" PRE-FINISHED METAL DOWNSPOUT TIE TO STORM WITH DOWNSPOUT BOOTS J.R. HOE N4628 OR EQ.
RP 3	6" x 6" PRE-FINISHED METAL GUTTER
RP 4	PRE-ENGINEERED, PRE-FINISHED ALUMINUM CANOPY WITH DOWNSPOUT DISCHARGE ABOVE GRADE
RP 5	PRE-ENGINEERED, PRE-FINISHED ALUMINUM CANOPY WITH DOWNSPOUT DISCHARGE UNDERGROUND AND TIE TO STORM
RP 6	SUSPENDED PRE-ENGINEERED, PRE-FINISHED ALUMINUM CANOPY
RP 7	ROOF HATCH WITH ACCESS LADDER. SEE A1.4
RP 8	4" x 6" PRE-FINISHED METAL DOWNSPOUT SPILL TO LOW ROOF. PROVIDE CONCRETE SPLASH BLOCK

NOTE: STANDING SEAM ROOF PANELS TO BE FIELD FORMED OR PROVIDED IN LENGTHS SUCH THAT NO LAP SEAMS WILL BE REQUIRED. NO LAP SEAMS WILL BE ACCEPTED.

Order Plans @

ROBERTSON INDIA ROOF ARCHITECTS & ENGINEERS
3400 Preston Ridge Rd., Suite 275, Marietta, GA, 30005
770.474.2600 / rtwr@rindia.com



Dawson County College and Career Academy
Dawsonville, Georgia
Dawson County Schools
Overall Square Footage = 35,800 SF
LFE = 1025

REVISIONS

NO.	DATE	DESCRIPTION

DATE: 05-07-2018
PROJECT NUMBER: 17-303
SHEET NUMBER: A1.4