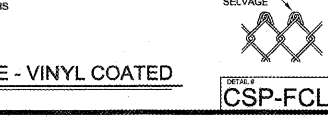
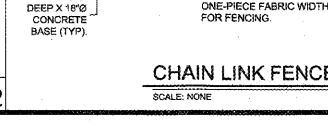
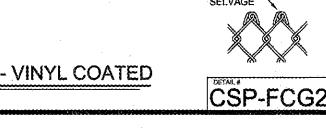
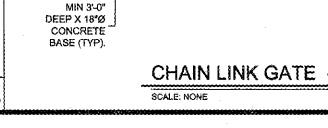
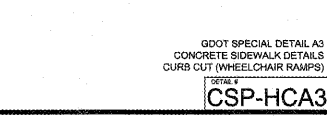
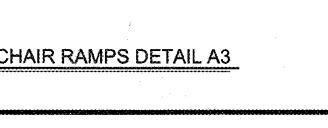
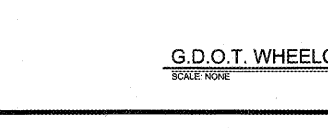
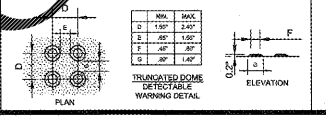
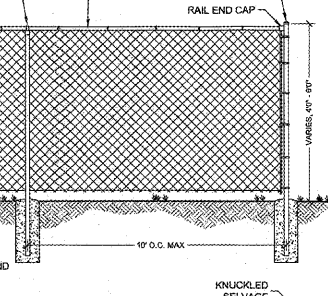
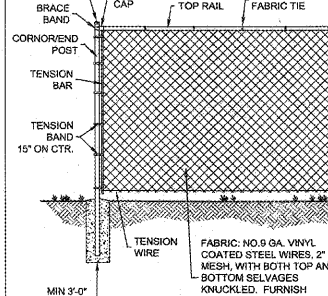
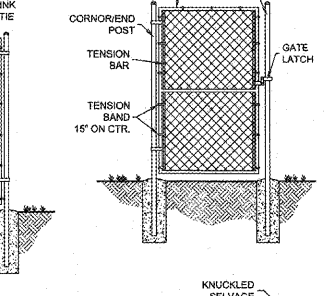
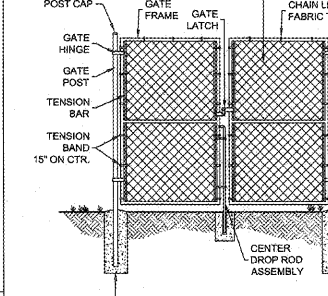
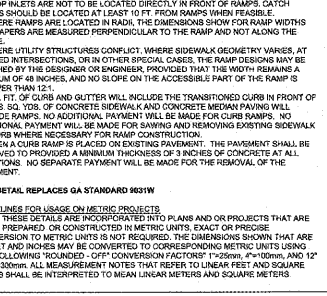
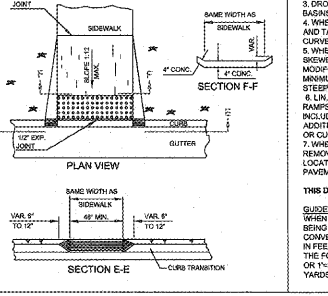
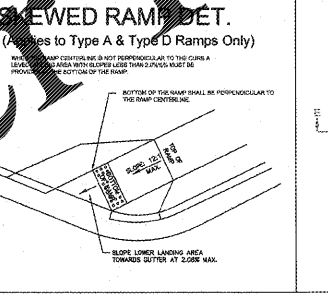
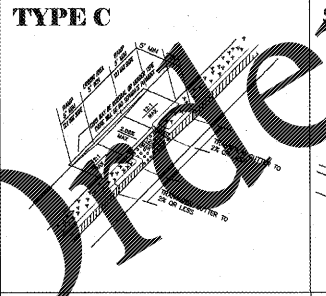
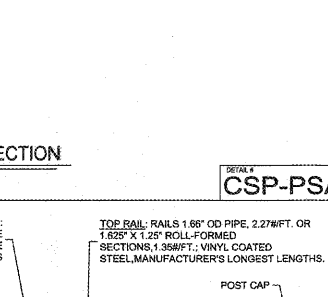
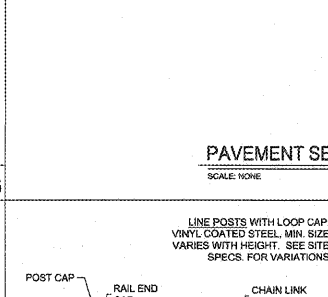
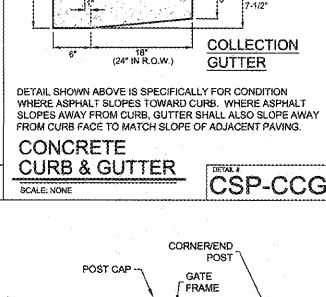
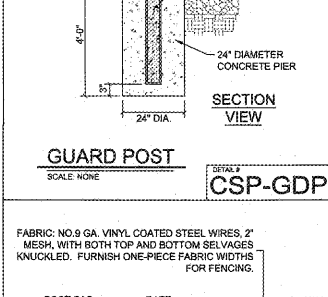
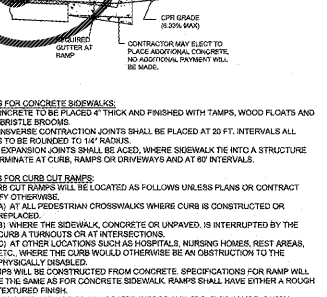
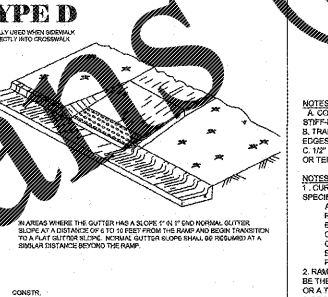
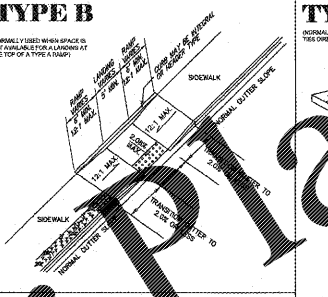
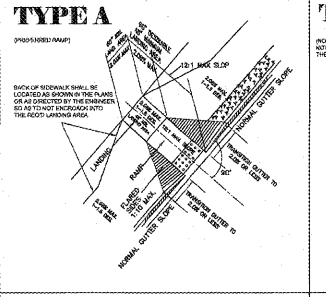
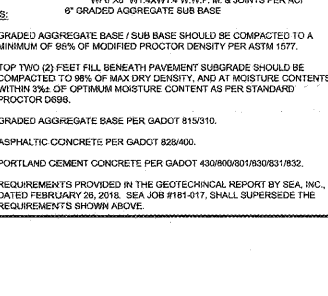
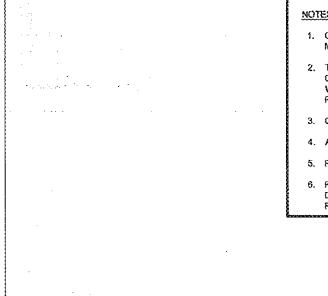
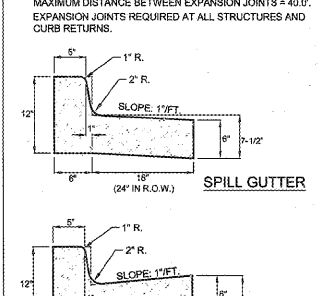
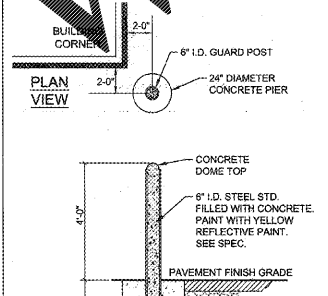
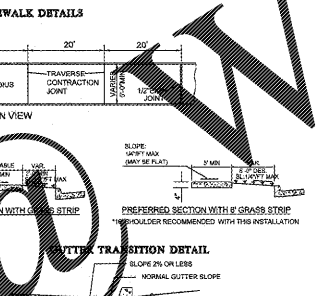
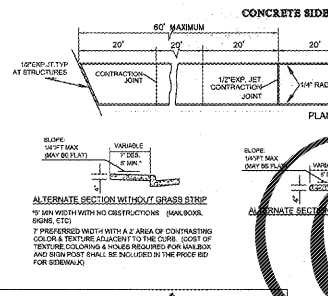
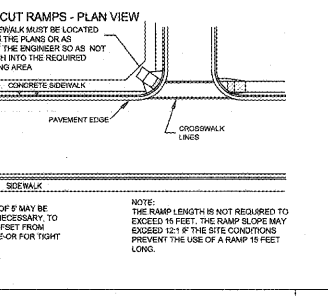
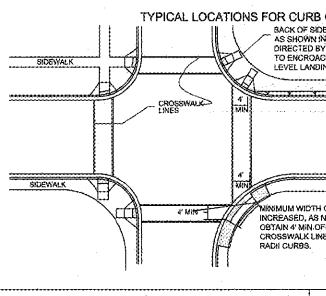


PAVING SYMBOLS LEGEND	
[Symbol]	ASPHALT PAVEMENT STANDARD DUTY 1" ASPHALTIC CONCRETE SURFACE COURSE - 9.5 MM SUPERPAVE, TYPE I
[Symbol]	2" ASPHALTIC CONCRETE BINDER / INTERMEDIATE COURSE - 12.5 MM SUPERPAVE
[Symbol]	6" GRADED AGGREGATE BASE (GAB)
[Symbol]	ASPHALT PAVEMENT HEAVY DUTY 1.5" ASPHALTIC CONCRETE SURFACE COURSE - 9.5 MM SUPERPAVE, TYPE II
[Symbol]	2.5" ASPHALTIC CONCRETE BINDER / INTERMEDIATE COURSE - 19.0 MM SUPERPAVE
[Symbol]	6" GRADED AGGREGATE BASE (GAB)
[Symbol]	HEAVY DUTY CONCRETE PAVEMENT 6" PORTLAND CEMENT CONCRETE, AIR ENTRAINED PAVEMENT SHALL BE 4,000 PSI (28-DAY COMPRESSIVE STRENGTH)
[Symbol]	6" PORTLAND CEMENT CONCRETE, AIR ENTRAINED PAVEMENT SHALL BE 4,000 PSI (28-DAY COMPRESSIVE STRENGTH)
[Symbol]	6" GRADED AGGREGATE SUB-BASE
[Symbol]	CONCRETE STANDARD DUTY 4" PORTLAND CEMENT CONCRETE, AIR ENTRAINED PAVEMENT SHALL BE 4,000 PSI (28-DAY COMPRESSIVE STRENGTH)
[Symbol]	4" PORTLAND CEMENT CONCRETE, AIR ENTRAINED PAVEMENT SHALL BE 4,000 PSI (28-DAY COMPRESSIVE STRENGTH)
[Symbol]	6" GRADED AGGREGATE SUB-BASE
[Symbol]	CONCRETE SIDEWALK 4" PORTLAND CEMENT CONCRETE, AIR ENTRAINED PAVEMENT SHALL BE 4,000 PSI (28-DAY COMPRESSIVE STRENGTH)
[Symbol]	4" PORTLAND CEMENT CONCRETE, AIR ENTRAINED PAVEMENT SHALL BE 4,000 PSI (28-DAY COMPRESSIVE STRENGTH)
[Symbol]	6" GRADED AGGREGATE SUB-BASE



ROBERTSON INDIA ROOF ARCHITECTS ENGINEERS
3440 Preston Ridge, Marietta, GA 30065
770.674.2600 / www.rindia.com

Dawson County College and Career Academy
Dawsonville, Georgia
Dawson County Schools
Overall Squarefootage = 35,800 SF
FTE = 1625

Facility No. 642-0198
Date: 05-07-2018
Project Number: 17-303
C - 6.1