

SOIL TYPES

SOIL DESCRIPTIONS OBTAINED FROM A SOIL SURVEY OF DAWSON, LUMPKIN, AND WHITE COUNTIES, GEORGIA
 MAP SYMBOL - DESCRIPTION - SLOPES
 FbE2 - FANNIN SANDY CLAY LOAM, 10 TO 25 PERCENT SLOPES, ERODED.
 HIE - HAYESVILLE SANDY LOAM-2 TO 6 PERCENT SLOPES.
 HIE - HAYESVILLE SANDY LOAM, 10 TO 25 PERCENT SLOPES.
 TdG - TALLAPOOSA SOILS, 25 TO 70 PERCENT SLOPES.

CONTRACTOR SHALL NOTIFY ENGINEER BY WRITTEN EMAIL AND BY PHONE - (770) 674-2600 - WITHIN TWENTY-FOUR (24) HOURS AFTER INSTALLATION OF THE INITIAL SEDIMENT STORAGE REQUIREMENTS AND PERIMETER CONTROL BMPs.

SEDIMENT TRAP VOLUME CALCULATIONS - Sd4-A #1

Project Name: DAWSON COUNTY COLLEGE & CAREER ACADEMY
 Date: 03/20/18
 By: S.Z.
 Drainage Area: 0.55 AC

Elevation	Stage	(ft)	A ₁ (ft ²)	A ₂ (ft ²)	Stage Depth (ft)	Sub Volume (ft ³)	Cumulative Volume (ft ³)	Ac-F
1452.0	0.0		153	249	0.0	0	0	0.00
1451.0	1.0		153	249	1.0	331	331	0.01
1450.0	2.0		549	249	1.0	1,404	1,734	0.04

Required Wet Pool Volume (67C)(AC) = 814 ft³
 Required Minimum Wet Pool Elevation = 1453.3 ft
 Actual Provided Wet Pool Elevation = 1453.3 ft
 Additional Required Dry Sediment Storage Above Wet Pool (67C)(AC) = 814 ft³
 Dry Storage Elevation (1 Foot Max. Above Wet Pool) = 1453.8 ft
 Cleanout Volume (22C)(AC) = 287 ft³
 Cleanout Elevation = 1452.8 ft

SEDIMENT TRAP VOLUME CALCULATIONS - Sd4-A #2

Project Name: DAWSON COUNTY COLLEGE & CAREER ACADEMY
 Date: 03/20/18
 By: S.Z.
 Drainage Area: 0.75 AC

Elevation	Stage	(ft)	A ₁ (ft ²)	A ₂ (ft ²)	Stage Depth (ft)	Sub Volume (ft ³)	Cumulative Volume (ft ³)	Ac-F
1403.0	0.0		2071	3091	0.0	0	0	0.00
1402.0	1.0		2071	3091	1.0	2,594	2,594	0.08
1401.0	2.0		3091	3091	1.0	5,412	7,978	0.18

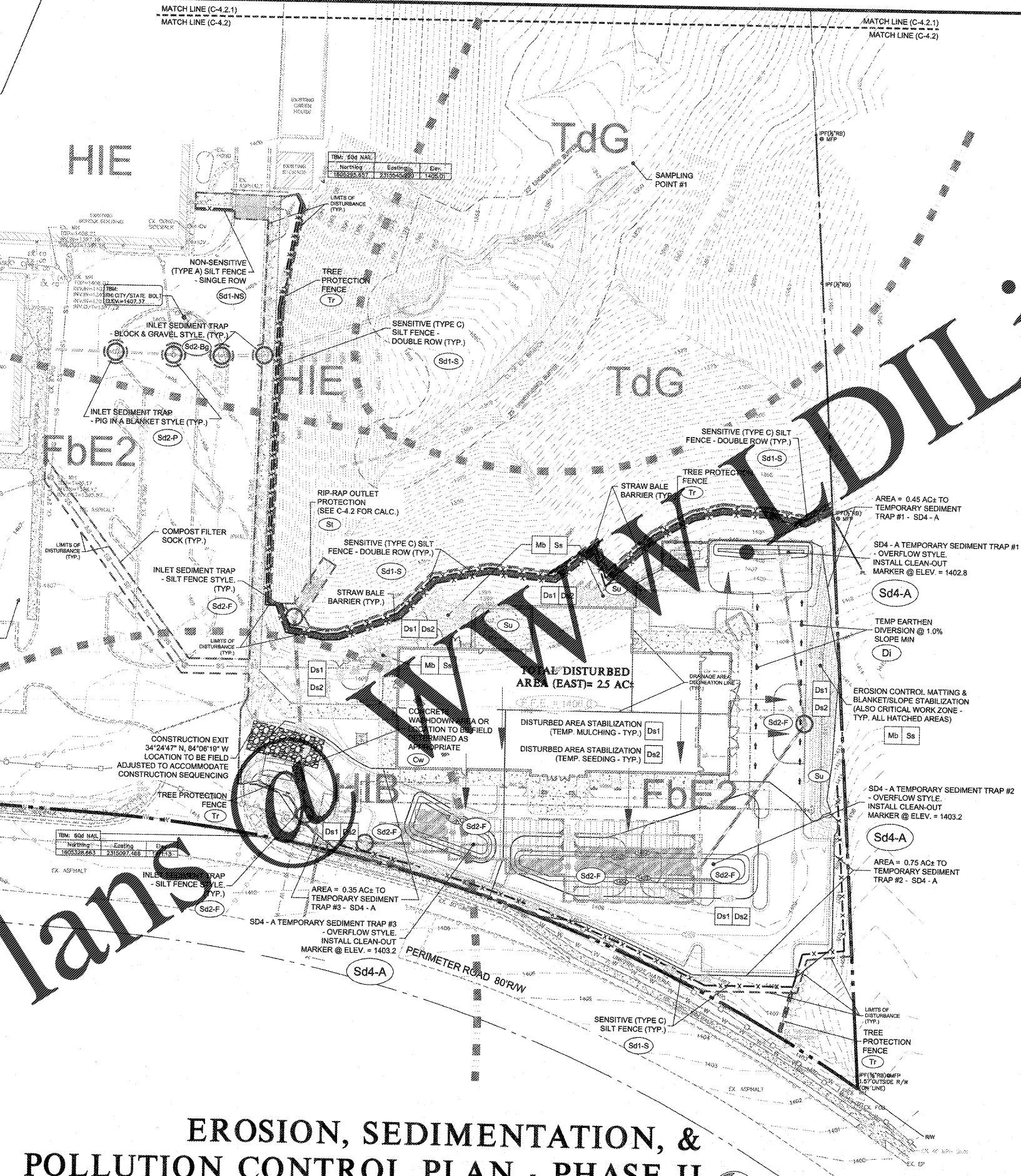
Required Wet Pool Volume (67C)(AC) = 1,367 ft³
 Required Minimum Wet Pool Elevation = 1403.5 ft
 Actual Provided Wet Pool Elevation = 1403.8 ft
 Additional Required Dry Sediment Storage Above Wet Pool (67C)(AC) = 1,367 ft³
 Dry Storage Elevation (1 Foot Max. Above Wet Pool) = 1404.0 ft
 Cleanout Volume (22C)(AC) = 446 ft³
 Cleanout Elevation = 1403.2 ft

SEDIMENT TRAP VOLUME CALCULATIONS - Sd4-A #3

Project Name: DAWSON COUNTY COLLEGE & CAREER ACADEMY
 Date: 03/20/18
 By: S.Z.
 Drainage Area: 0.35 AC

Elevation	Stage	(ft)	A ₁ (ft ²)	A ₂ (ft ²)	Stage Depth (ft)	Sub Volume (ft ³)	Cumulative Volume (ft ³)	Ac-F
1403.0	0.0		285	2713	0.0	0	0	0.00
1402.0	1.0		285	2713	1.0	891	891	0.02
1401.0	2.0		5213	2713	1.0	1,469	2,439	0.09

Required Wet Pool Volume (67C)(AC) = 633 ft³
 Required Minimum Wet Pool Elevation = 1403.8 ft
 Actual Provided Wet Pool Elevation = 1403.8 ft
 Additional Required Dry Sediment Storage Above Wet Pool (67C)(AC) = 633 ft³
 Dry Storage Elevation (1 Foot Max. Above Wet Pool) = 1404.2 ft
 Cleanout Volume (22C)(AC) = 208 ft³
 Cleanout Elevation = 1403.2 ft



STRUCTURAL PRACTICES

CODE	PRACTICE	DETAIL	MAP SYMBOL	DESCRIPTION
Co	CONSTRUCTION EROSION CONTROL			CONSTRUCTION EROSION CONTROL MEASURES TO BE INSTALLED AND MAINTAINED THROUGHOUT CONSTRUCTION TO PREVENT SOIL EROSION AND SEDIMENTATION.
D	DRAINAGE			INSTALL DRAINAGE SYSTEMS AS SHOWN TO PREVENT WATER ACCUMULATION AND EROSION.
Sd1	SEDIMENT TRAP			INSTALL SEDIMENT TRAPS AS SHOWN TO PREVENT SEDIMENT FROM ENTERING PERIMETER ROAD.
Sd2	SEDIMENT TRAP			INSTALL SEDIMENT TRAPS AS SHOWN TO PREVENT SEDIMENT FROM ENTERING PERIMETER ROAD.
Su	SILT FENCE			INSTALL SILT FENCES AS SHOWN TO PREVENT SEDIMENT FROM ENTERING PERIMETER ROAD.
Tr	TREE PROTECTION			INSTALL TREE PROTECTION FENCES AS SHOWN TO PREVENT DAMAGE TO EXISTING TREES.

VEGETATIVE MEASURES

CODE	MEASURE	DETAIL	MAP SYMBOL	DESCRIPTION
Ds1	TEMPORARY DISTURBED AREA STABILIZATION			INSTALL TEMPORARY DISTURBED AREA STABILIZATION MEASURES AS SHOWN TO PREVENT EROSION.
Ds2	TEMPORARY DISTURBED AREA STABILIZATION			INSTALL TEMPORARY DISTURBED AREA STABILIZATION MEASURES AS SHOWN TO PREVENT EROSION.
Mb	MULCHING			INSTALL MULCHING AS SHOWN TO PREVENT EROSION.
Ss	SEEDING			INSTALL SEEDING AS SHOWN TO PREVENT EROSION.
Su	STRAW BALE BARRIER			INSTALL STRAW BALE BARRIERS AS SHOWN TO PREVENT SEDIMENT FROM ENTERING PERIMETER ROAD.

MULCH/ SEED RATES

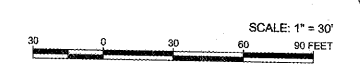
CODE	PLANTING DATE	SPECIES	APPLICATION RATE
Ds1	SOFT 1 - 2011 JAN 15 - MAR 15	WOOD CHIPS BARK MULCH	2" - 4"
Ds2	SOFT 1 - 2011 FEB 15 - MAR 15	WOOD CHIPS BARK MULCH	2" - 4"
Ds3	SOFT 1 - 2011 OCT 1 - FEB 15	WOOD CHIPS BARK MULCH	2" - 4"

- PHASE II SCHEDULE**
- CONTINUE GRADING OPERATIONS AND INSTALL NEW SILT FENCES AS NEEDED
 - INSTALL BRUSH BARRIERS AT THE TOE OF SLOPE AS INDICATED
 - INSTALL NEW COMPOST FILTER SOCKS ALONG EMBANKMENT SLOPES AS INDICATED
 - INSTALL COMPOST FILTER SOCKS ALONG UTILITY TRENCH
 - EXCAVATE TEMPORARY SEDIMENT TRAPS AS INDICATED
 - INSTALL DIVERSION DITCHES TO DIRECT STORM WATER RUN OFF TO TEMPORARY SEDIMENT TRAP
 - INSTALL TEMPORARY INLET PROTECTIONS AT EXISTING STORM STRUCTURES AS INDICATED
 - STABILIZE DISTURBED AREAS WITHIN 7 DAYS OF LAND DISTURBANCE WITH MULCH OR SEEDING
 - APPLY ANCHORING FORMS OF PANS TO STABILIZE AREAS LEFT DISTURBED FOR MORE THAN SEVEN (7) DAYS
 - BEGIN INSTALLATION OF STORM DRAINAGE SYSTEMS & UNDERGROUND DETENTION SYSTEM
 - INSTALL TEMPORARY INLET PROTECTIONS AS NEW STORM STRUCTURES BASES ARE COMPLETED
 - INSTALL EROSION CONTROL MATTING AND BLANKETS IN ALL CRITICAL WORK ZONES AND AREAS INDICATED
 - INSTALL OUTLET PROTECTION RIP-RAP AT EACH PIPE OUTLET

CITY NOTE:
 ALL CUT AND FILL SLOPES SHALL BE SURFACED ROUGHENED AND VEGETATED WITHIN THREE (3) DAYS AFTER GRADING IS COMPLETE.

Order Plans @ www.dilines.com

EROSION, SEDIMENTATION, & POLLUTION CONTROL PLAN - PHASE II



STORMDRAIN OUTLET PROTECTION CHART

HW	PIPE SIZE	D ₅₀	V ₅₀	D ₅₀	L ₁	W	D _{max}	MAX. THICKNESS	T _w
S	24"	4.00	1.28	50"	8'	14'	18"	14"	< 0.50'

ROBERTSON JUDIA ROOF ARCHITECTURE ENGINEERS
 3460 Preston Ridge Rd., Suite 275, Marietta, GA 30066
 770.674.2600 / www.rjr.com



Dawson County College and Career Academy
 Dawsonville, Georgia
Dawson County Schools
 Overall Squarefootage = 35,800 SF
 L₁ = 1023

EROSION, SEDIMENTATION, & POLLUTION CONTROL PLAN - PHASE II

DATE: 05-07-2018

PROJECT NUMBER: 17-303

C - 4.2

24 HR EMERGENCY CONTACT
 SCOTT MORGAN
 PHONE: 706-295-2248

IF YOU DIG GEORGIA... CALL US FIRST!
 UTILITIES PROTECTION CENTER
 IT'S THE LAW