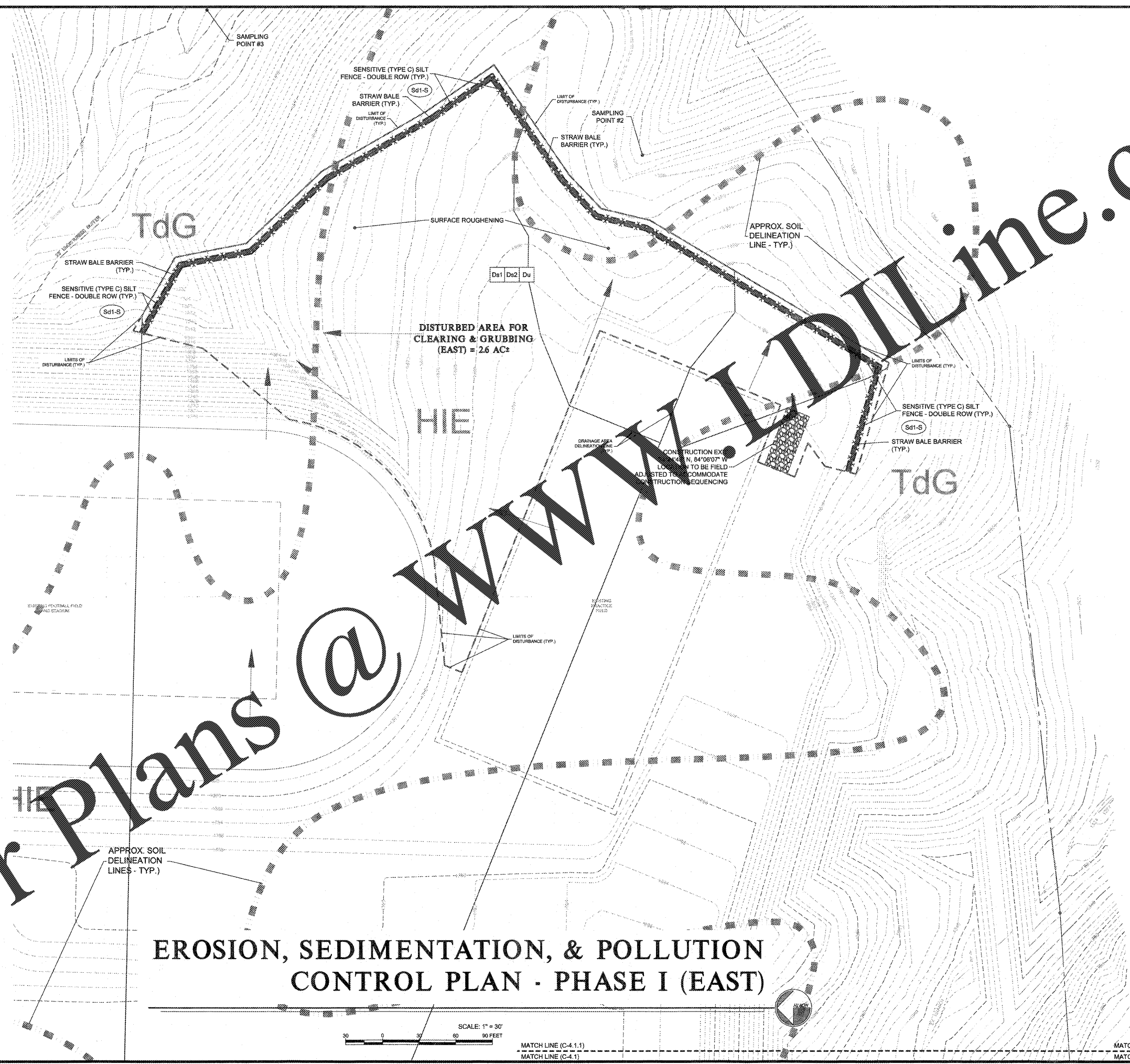


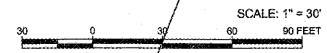
Order Plans @ www.walldline.com



EROSION, SEDIMENTATION, & POLLUTION CONTROL PLAN - PHASE I (EAST)

FOR EMERGENCY CONTACT
 Mr. SCOTT MORGAN
 PHONE 706-265-3246

IF YOU DIG GEORGIA...
 CALL US FIRST!
 UTILITIES PROTECTION CENTER
 IT'S THE LAW
 Know what's below.
 Call before you dig.



MATCH LINE (C-4.1.1)
 MATCH LINE (C-4.1)

MATCH LINE (C-4.1.1)
 MATCH LINE (C-4.1)

ROBERTSON DODD ROOF ARCHITECTS & ENGINEERS
 3480 Preston Ridge Rd., Suite 275, Alpharetta, GA, 30005
 770.974.2009 / www.rdrinc.com



(Facility No. 642-0198)
Dawson County College and Career Academy
 Dawsonville, Georgia
Dawson County Schools
 Overall Squarefootage = 35,800 SF
 FTE = 1625
 IUS # 74 (Existing) = 11 (New) = 85 IUS

REVISIONS

EROSION, SEDIMENTATION, & POLLUTION CONTROL PLAN - PHASE I (EAST)
 DATE: 05-07-2018
 PROJECT NUMBER: 17-303
C - 4.1.1