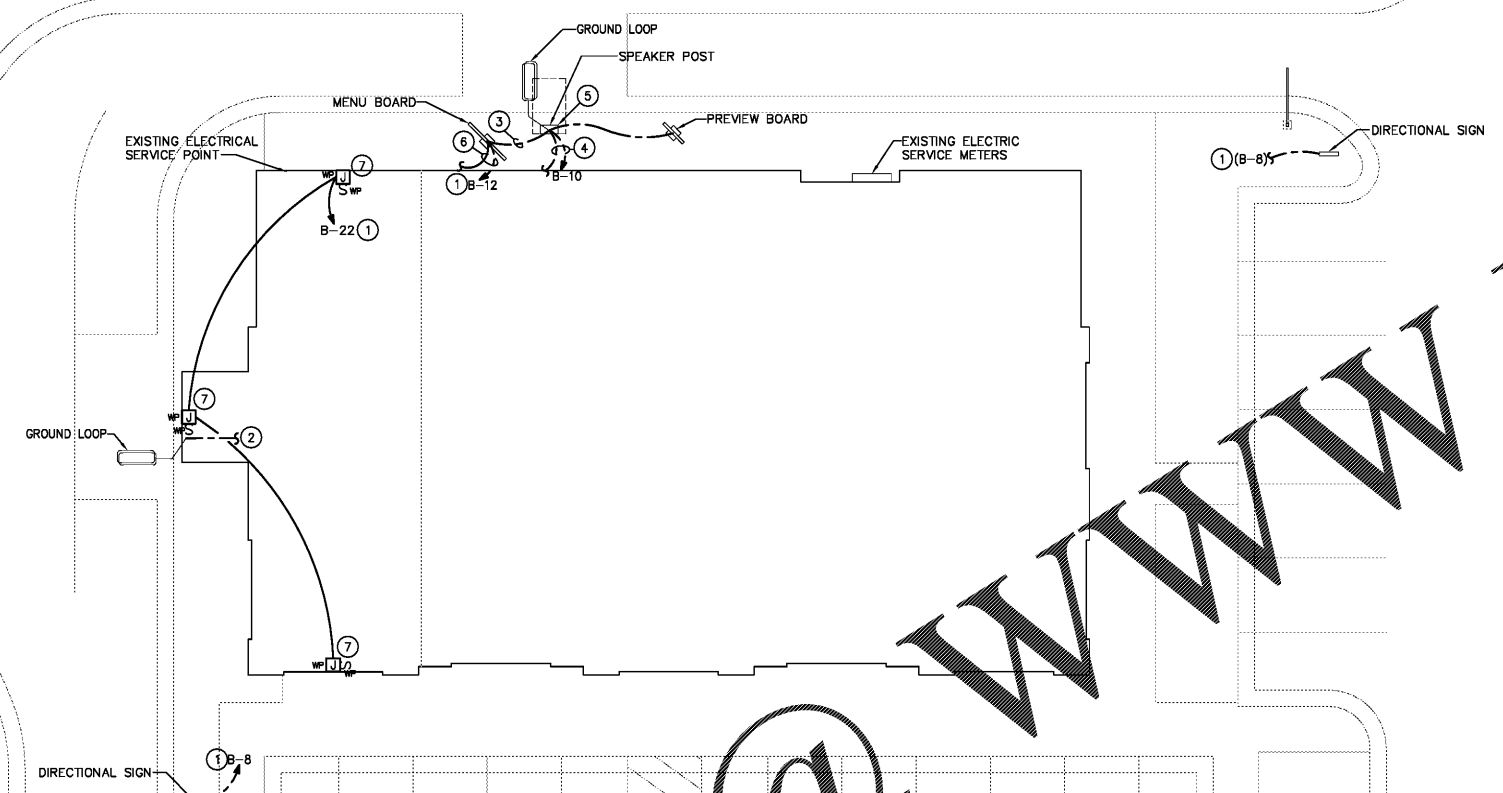




ARCHITECT OF RECORD  
 JAMES D. SMITH, AIA  
 522 BAY LN.  
 CENTERTVILLE, MA 02632

Craig Kalhoefer, P.E.  
 CONSULTING ENGINEER  
 6926 W. LINEBAUGH AVE. - STE. 101  
 TAMPA, FLORIDA 33625  
 Telephone: (813) 287-2719  
 Fax: (813) 961-1585

- ELECTRICAL PLAN NOTES**
- ROUTE CIRCUIT(S) VIA LIGHTING CONTROL RELAY PANEL. SEE SCHEDULE ON SHEET E-1A.
  - 1"Ø WITH PULL STRING TO RIS SYSTEM. SEE SHEETS E-3 AND ARCHITECTURAL SITE SHEETS FOR ADDITIONAL INFORMATION.
  - 3/4"Ø WITH PULL STRING FOR CONNECTION OF GROUND LOOP. STUB CONDUIT UP INTO MENU BOARD/SPEAKER POST.
  - PROVIDE THE FOLLOWING CONDUITS FROM SPEAKER POST TO VEHICLE DETECTOR, INTERCOM SYSTEM AND TIME INTERFACE LOCATED IN OFFICE: (3)1"Ø WITH PULL STRING. PROVIDE (1)1"Ø FOR POWER. SEE SHEETS AS-1 AND AS-2 FOR ADDITIONAL INFORMATION.
  - POWER CONNECTION TO DRIVE-THRU CANOPY LIGHTS. COORDINATE WITH CANOPY VENDOR FOR REQUIREMENTS. COORDINATE WITH GC FOR EXACT LOCATION.
  - PROVIDE THE FOLLOWING CONDUITS FROM MENU BOARD TO OFFICE: (1)1"Ø WITH PULL STRING, (1)1"Ø FOR POWER. SEE SHEETS AS-1 AND AS-2 FOR ADDITIONAL INFORMATION.
  - JUNCTION BOX AND WEATHER-PROOF DISCONNECT SWITCH FOR SIGN. SEE ARCHITECTURAL ELEVATIONS FOR SIGN LOCATIONS. VERIFY JUNCTION BOX LOCATION WITH SIGN VENDOR PRIOR TO ROUGH-IN.



Order Plans @

WWW.LDWWW.COM

**ELECTRICAL SITE PLAN**  
 SCALE: 3/32"=1'-0"

THIS DOCUMENT IS THE PROPERTY OF QSPR. IT IS TO BE USED ONLY FOR THE PROJECT AND SITE SPECIFICALLY IDENTIFIED HEREIN. IT IS NOT TO BE REPRODUCED, COPIED, OR TRANSMITTED IN ANY FORM OR BY ANY MEANS, ELECTRONIC OR MECHANICAL, INCLUDING PHOTOCOPYING, RECORDING, OR BY ANY INFORMATION STORAGE AND RETRIEVAL SYSTEM, WITHOUT THE WRITTEN PERMISSION OF QSPR.

**DUNKIN'**

**dunkin'**  
 brand.  
 STORE #3357281  
 JEFFERSON DAVIS HWY  
 DUMFRIES, VA

REVISION		
No.	DATE	DESCRIPTION

DWG DATE: 06-29-2018  
 DRAWN BY: AM  
 PROJECT No: 18123  
 DWG TITLE:

SITE PLAN -  
 ELECTRICAL

SHEET No.  
**ES-1**