

LIGHTING SCHEDULE

CODE	DESCRIPTION	MANUFACTURER	PRODUCT
<b>INTERIOR</b>			
C	10W INTEGRAL LED TRACK HEAD W/ 2', 4', OR 8' TRACK(S)	JUNO	R800L40K / 80CR FL
LED-8	LED EXTERIOR STRIP LIGHT	SLOAN	701912 C175 (12" LONG)
P1	8' 3X3 SURFACE LED LINEAR DIR. PENDANT W/ ALL ACCESS.	PINNACLE ARCHITECTURAL LIGHTING	EX33A-3500-12X12-AC48JB-120-1C35K
P2	4' 3X3 SURFACE LED LINEAR DIR. PENDANT W/ ALL ACCESS.	PINNACLE ARCHITECTURAL LIGHTING	EX33A-3500-12X12-AC48JB-120-1C35K
P3	ALVA PENDANT / CHANDELIER	TECH LIGHTING	700TD-ALVPM-C-BB-LED930
R1	6" 2000LM 0-10V LED DOWNLIGHT	HALO	PD6-10-D010B / PDM6B-835-61VCWF (BLACK FINISH)
R1A	6" 1000LM 0-10V LED DOWNLIGHT	HALO	PD6-10-D010B / PDM6B-835-61VCWF (BLACK FINISH)
R2-2X2	2X2 REC. LED FLAT PANEL	LSI	EPANL 22 34L 40K
R2-2X4	2X4 REC. LED FLAT PANEL	LSI	EPANL 24 40L 40K
R4	20"X10" "L" LINEAR LED RUN OVER COUNTER	PINNACLE ARCHITECTURAL LIGHTING	EX33-A-N-35-4
OC	OPTIONAL- WALL MOUNTED OCCUPANCY SENSOR- WHITE	WS	WS-200-W
W-FBU-B	2-HEAD BATTERY PACK	EXTRONIX	LL50H (BLACK FINISH)
W-FBU-W	2-HEAD BATTERY PACK	EXTRONIX	LL50H (WHITE FINISH)
X	LED EXIT W/ BATTERY	EXTRONIX	VEX-U-BP-WH
COMBO EXIT	COMBO LED EXIT / (2) HEAD EBU	EXTRONIX	MLED-U-WH-EL90-R
<b>EXTERIOR</b>			
RH	EXT. WEATHERPROOF EM REMOTE HEAD	EX	ZIP-2
LED-8	LED EXTERIOR STRIP LIGHT	SLOAN	701912 C175 (12" LONG)

LIGHTING SCHEDULE NOTES

1. PROVIDE ALL FIXTURES COMPLETE WITH LAMPS. REFER TO NATIONAL ACCOUNT SOURCE INFO FOR LAMP SPECS & VILLA LIGHTING RE-LAMPING PROGRAM. ALTERNATES FOR DRYWALL OR EMERGENCY FIXTURES CAN BE FOUND UNDER NATIONAL ACCOUNTS.
2. PROVIDE HOLD-DOWN CLIPS FOR EACH CORNER OF LED GRID TROFFERS.
3. PROVIDE ALL REQUIRED MOUNTING OR HANGING HARDWARE.
4. COORDINATE AND VERIFY ALL FIXTURE INFORMATION, TYPE AND FINAL LOCATIONS WITH THE REFLECTED CEILING PLAN.
5. LAMPS SHALL BE AS MANUFACTURED BY SYLVANIA, WESTINGHOUSE, GENERAL ELECTRIC OR APPROVED EQUAL.
6. ALL SUSPENDED FIXTURES AND SURFACE OR RECESSED FIXTURES IN SOFFIT PAINTED [P-2] SHALL HAVE BLACK TRIM IN LIEU OF WHITE.

GENERAL RCP NOTES:

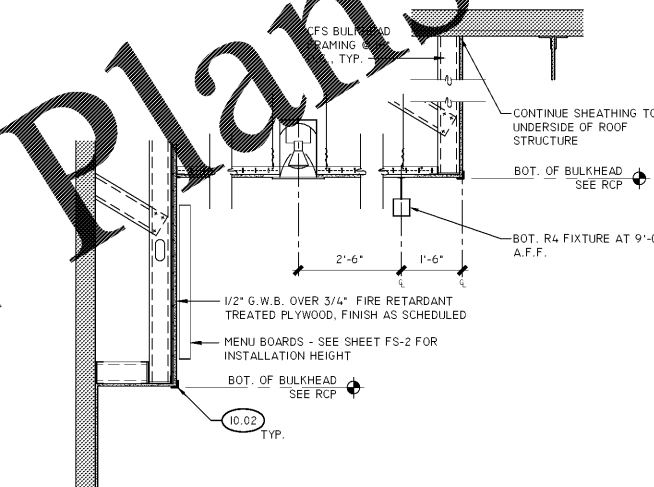
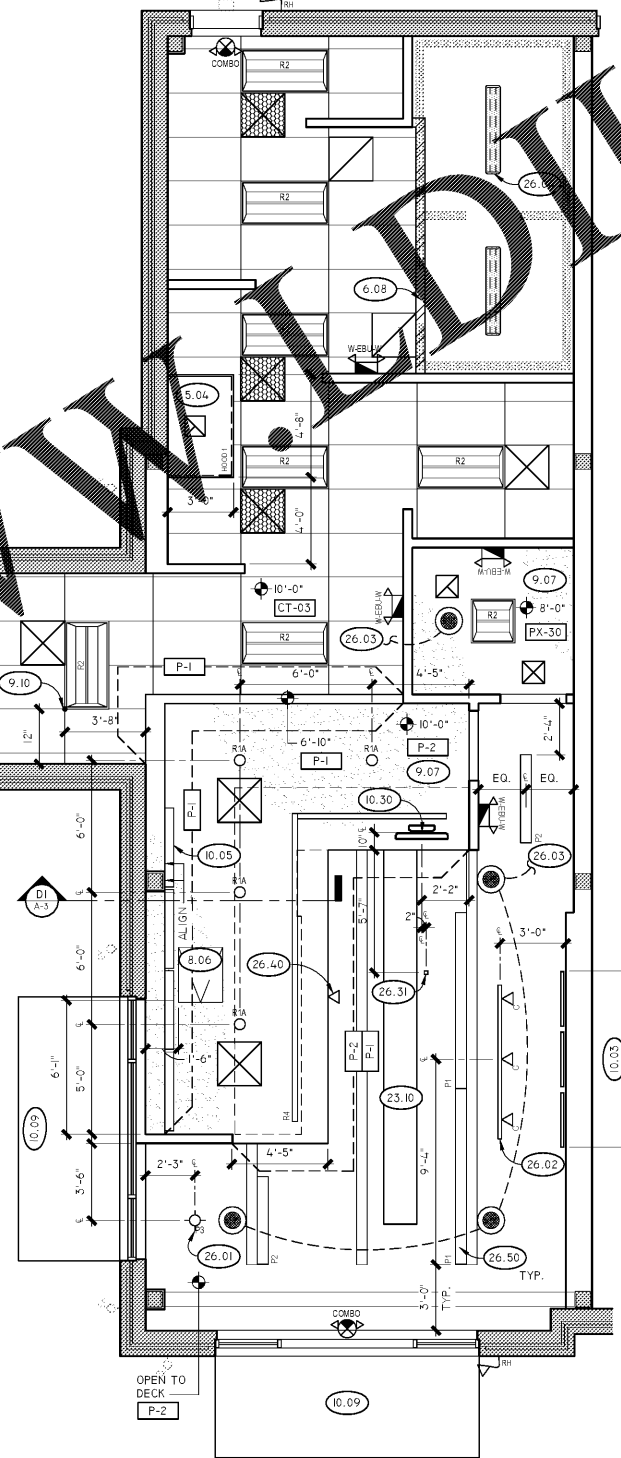
1. ALL CEILING GRIDS SHALL BE [CT-04].
2. SEE SHEET T-5 FOR NATIONAL ACCOUNTS.
3. ALL LIGHT FIXTURES AT THE SERVICE LINE AND KITCHEN AREA SHALL HAVE LENSES OR OVERLAY.
4. SEE FINISH PLAN AND INTERIOR ELEVATIONS FOR BULKHEAD FINISHES NOT INDICATED ON PLAN.
5. ALL CEILING GRIDS TO BE CENTERED IN ROOM / AREA U.N.O.

MUSIC SYSTEM NOTES:

1. THE FRANCHISEE SHALL FURNISH THE MUSIC SYSTEM AND SPEAKERS. THE GC SHALL FURNISH ALL SPEAKER WIRE AND INSTALL THE MUSIC SYSTEM FOR A COMPLETE AND OPERATIONAL SOUND SYSTEM.
2. PROVIDE SEPARATE VOLUME CONTROLS FOR EACH AREA (DINING/RESTROOMS/EXTERIOR SEATING (IF APPLICABLE)) AND LOCATE CONTROLS IN THE OFFICE. COORDINATE WITH FRANCHISEE PRIOR TO ROUGH IN.
3. THE GC SHALL OBTAIN THE LOW VOLTAGE PERMITS REQUIRED FOR THIS PROJECT.
4. ALL CEILING GRIDS TO BE FINISH MOUNTED WHITE IN RESTROOMS AND SUSPENDED FROM STRUCTURE BACK, IN OPEN TO STRUCTURE AREAS. EXTERIOR SPEAKERS SHALL BE BLACK AND RATED FOR EXTERIOR USE.

REFLECTED CEILING PLAN KEY NOTES:

- 5.04 PROVIDE STAINLESS STEEL CLOSURE PANELS / SHROUD ABOVE THE HOOD TO 6" ABOVE THE CEILING ON ALL EXPOSED SIDES OF HOOD.
- 6.01 PROVIDE BULKHEAD ABOVE WALK-IN BOX TO 6" ABOVE CEILING.
- 8.06 PROVIDE 24"X30" ACCESS PANEL IN UNDERSIDE OF BULKHEAD - ACCESS PANEL TO BE PAINTED TO MATCH BULKHEAD.
- 9.07 GYPSUM CEILING SUSPENDED WITH SYSTEM AS MANUFACTURED BY ARMSTRONG.
- 9.10 CEILING TILE GRID STARTING POINT.
- 10.02 PROVIDE ALCOVYN VA-200 6'-0" HIGH BRUSHED SILVER CORNER GUARDS AT ALL OUTSIDE CORNERS ON THE CUSTOMER AREA WALLS.
- 10.03 WALL ART, CENTERED ON TRACK LIGHTS ABOVE. SEE INTERIOR ELEVATIONS. COORDINATE W/ FRANCHISEE PRIOR TO ORDERING.
- 10.05 DUNKIN DONUTS DIGITAL MENU BOARD PROVIDED BY MENU BOARD VENDOR, MOUNTED TO BULKHEAD. SEE PLANS FOR GC PROVIDED BLOCKING AND CONDUITS / ROUGH-INS.
- 10.08 NEW AWNING PROVIDED BY VENDOR. GC SHALL PROVIDE BLOCKING AND ELECTRICAL CONNECTIONS AS REQUIRED BY APPROVED AWNING VENDORS SHOP DRAWINGS.
- 10.09 EXISTING AWNING TO REMAIN.
- 10.30 GC TO SUPPLY AND INSTALL CEILING HUNG "BUTTERFLY MOUNT" FOR ORDER STATUS BOARD AND EXPEDITOR VDU - TELE HOOK TH-1040 WITH (2) SCREEN MOUNTING PLATES BACK TO BACK. COORDINATE MOUNTING HEIGHT WITH TENANT.
- 23.10 INSTALL NEW EXPOSED SPIRAL DUCTWORK TIGHT TO UNDERSIDE OF EXISTING ROOF JOIST. PAINT DUCTWORK P-2.
- 26.01 MOUNT UNDERSIDE OF PENDANT FIXTURE @ 7'-0" A.F.F.
- 26.02 TRACK LIGHT FIXTURE, BOTTOM AT 10'-6" A.F.F.
- 26.03 TERMINATE SPEAKER WIRE AT OFFICE VOLUME CONTROLS.
- 26.04 WALK-IN BOX LIGHT FIXTURES FURNISHED BY WALK-IN BOX VENDOR AND INSTALLED BY THE CONTRACTOR.
- 26.31 NEW 2X2 BLACK POWER POLE FROM ABOVE CEILING TO GRAB-N-GO MERCHANDISER BELOW.
- 26.40 WIFI ACCESS POINT - CENTER ABOVE POS AT FRONT LINE.
- 26.50 BOTTOM OF P1 & P2 FIXTURES TO BE 10'-6" A.F.F., SUSPENDED FROM EXISTING STRUCTURE. PROVIDE UNISTRUT AS NEEDED FOR LIGHTING INSTALL.



D1 MENUBOARD BULKHEAD DETAIL

SCALE: 3/4" = 1'-0"

J1 REFLECTED CEILING PLAN

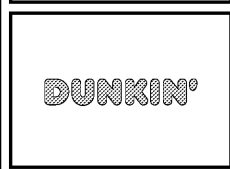
SCALE: 1/4" = 1'-0"

Order Plans @

WWW.WALKINDLINE.COM



OSRIR  
Quick Service Restaurant and Retail Design Group, LLC  
10000 Arundel Road, Suite 3D, Annapolis, MD 21409  
Ph. No. (410) 364-9880



dunkin' brands.  
STORE #357281  
JEFFERSON DAVIS HWY  
DUMFRIES, VA

REVISION		
No.	DATE	DESCRIPTION

DWG DATE: 06-29-2018  
DRAWN BY: STAFF  
PROJECT No.: 17157  
DWG TITLE:

REFLECTED CEILING PLAN

SHEET No.  
A-3