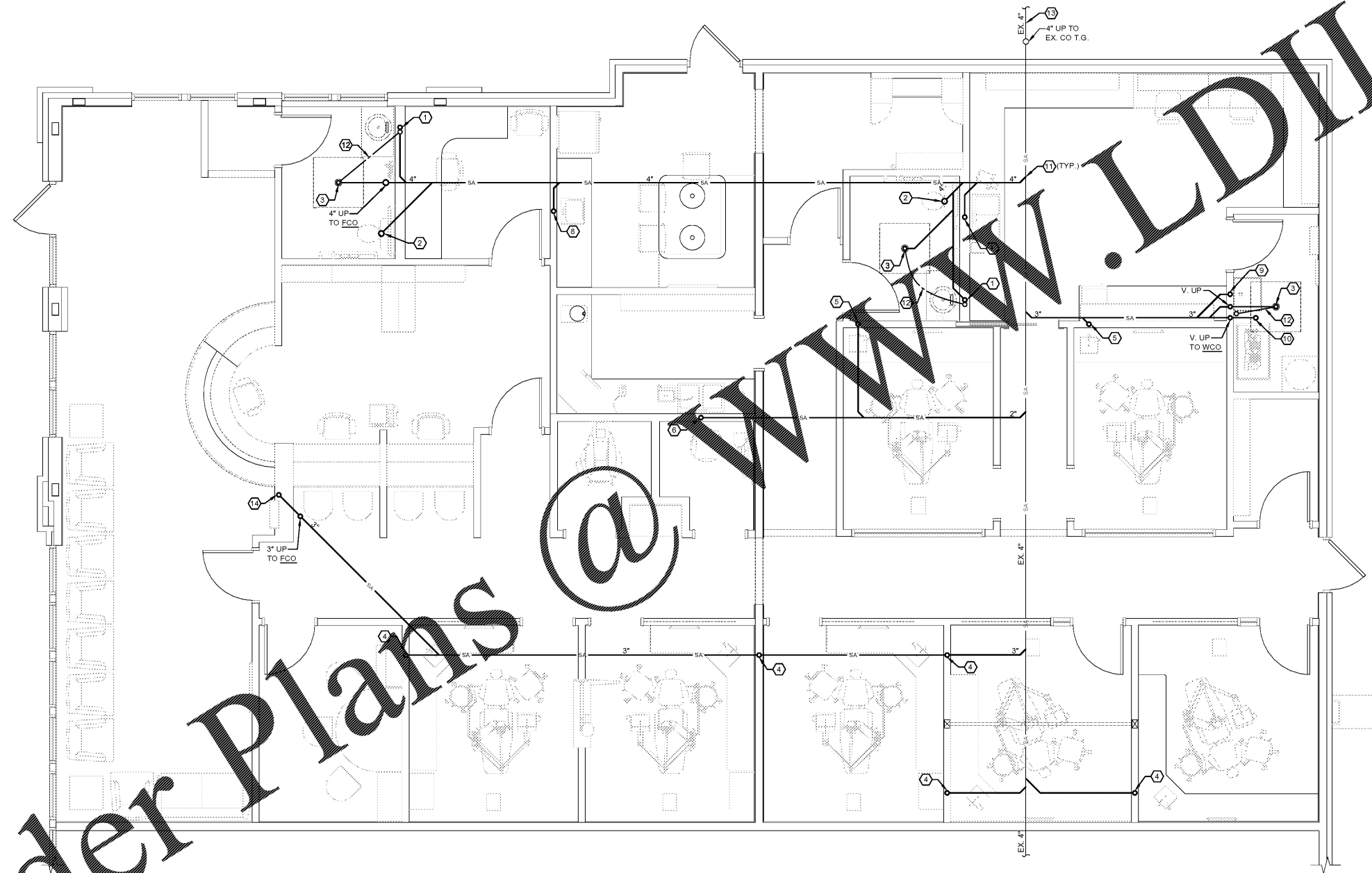


Order Plans @



**STRUCTURAL COORDINATION NOTES:**  
 - CLOSELY COORDINATE THE PLUMBING INSTALLATION WITH THE STRUCTURE, OTHER TRADES, AND CORRESPONDING OBSTRUCTIONS. SET INVERT ELEVATIONS OF ALL BRANCH LINES, LAYOUT EXACT RUNS, AND DETERMINE FINAL PITCH ADJUSTMENTS FOR UNDERFLOOR PIPING AS NECESSARY TO ACCOMMODATE FOUNDATION WALLS, PIERS, AND FOOTINGS. ADJUST PIPING AS NEEDED TO AVOID CONFLICT IN THE FIELD. CLOSELY COORDINATE ALL UNDERFLOOR PIPING LAYOUTS WITH THE GENERAL CONTRACTOR PRIOR TO CONSTRUCTION. VERIFY ALL PIPE ROUTING THROUGH OR BENEATH THE FOUNDATION WALLS WITH THE STRUCTURAL ENGINEER TO ENSURE PROPER PLACEMENT. DO NOT PERCEDE, PENETRATE, OR OTHERWISE MODIFY ANY STRUCTURAL COMPONENTS WITHOUT PRIOR WRITTEN APPROVAL FROM THE STRUCTURAL ENGINEER.

**SOIL TESTING NOTE:**  
 - G.C. TO HIRE A SOIL TESTING AGENCY TO PERFORM A SOIL TEST OF LANDLORD DELIVERED PAD PRIOR, DURING, & AFTER UNDERGROUNDS ARE INSTALLED. PAD SHALL BE RETURNED TO ITS ORIGINAL CONDITION PRIOR TO STARTING UNDERGROUNDS. REPORTS SHALL BE SUBMITTED TO ADM.

**DENTAL EQUIPMENT COORDINATION:**  
 - PLUMBING CONTRACTOR TO VERIFY TYPE AND LOCATION OF ALL DENTAL EQUIPMENT, ROUGH-IN DIMENSIONS, AND REQUIRED PLUMBING CONNECTIONS. PLUMBING CONTRACTOR SHALL FURNISH AND INSTALL ALL FLOOR FIXTURES, FLOOR DRAINS, HUB DRAINS, WATER CLOSETS, LAVATORIES AND FLOOR SINKS. DENTAL EQUIPMENT SUPPLIER SHALL FURNISH AND INSTALL ALL FIXTURES IDENTIFIED ON THEIR PLANS (WITH THE EXCEPTION OF THOSE IDENTIFIED ABOVE). INSTALL ALL DENTAL EQUIPMENT AND PROVIDE ALL FIXTURE TRAPS, SUPPLIES AND STOPS, ISOLATION VALVES, MIXING VALVES, ETC. AND MAKE FINAL CONNECTIONS TO DENTAL EQUIPMENT WITH THE EXCEPTION OF FINAL CONNECTION OF AIR COMPRESSOR AND VACUUM SYSTEM BY PLUMBING CONTRACTOR. VERIFY ALL EQUIPMENT CONNECTIONS WITH THE TENANT AND EQUIPMENT SUPPLIER PRIOR TO INSTALLATION. PROVIDE ADDITIONAL CONNECTIONS AS REQUIRED. COORDINATE ALL WORK ACCORDINGLY.

**UNDERFLOOR PIPING NOTES:**  
 - REFER TO SHEET UI.1 PRIOR TO ROUGH-IN OF FIXTURES.  
 - P.C. SHALL VERIFY RIM ELEVATION OF SANITARY MANHOLE UPSTREAM OF BUILDING SEWER CONNECTION TO THE MAIN. VERIFY FLOOR ELEVATION OF TENANT BUILDING. 12" IS ABOVE FLOOR ELEVATION. PROVIDE PRICE TO ADD A BACKWATER VALVE AND NOTIFY EXCEL ENGINEERING.

- 1 ROUTE 2" UNDERFLOOR SANITARY UP TO LAVATORY (L-1).
- 2 ROUTE 4" UNDERFLOOR SANITARY UP TO WATER CLOSET (WC-1H).
- 3 ROUTE 3" UNDERFLOOR SANITARY UP TO FLOOR DRAIN (FD-1). SEE SLAB LEAK DETECT AT FLOOR DRAIN DETAIL # D-1/MD.
- 4 ROUTE 2" UNDERFLOOR SANITARY UP TO TREATMENT SINK (S-1).
- 5 ROUTE 2" UNDERFLOOR SANITARY UP TO TREATMENT SINK (S-2).
- 6 ROUTE 2" UNDERFLOOR SANITARY UP TO STERILIZATION SINK (S-3).
- 7 ROUTE 2" UNDERFLOOR SANITARY UP TO LABORATORY SINK (S-4).
- 8 ROUTE 2" UNDERFLOOR SANITARY UP TO BREAKROOM SINK (S-5).
- 9 ROUTE 2" UNDERFLOOR SANITARY UP TO SERVICE SINK (SS-1).
- 10 ROUTE 3" UNDERFLOOR SANITARY UP TO A HEIGHT OF 18" FOR VACUUM WASTE. PROVIDE UNDERFLOOR TRAP. SEE RAM-VAC DETAIL SHEET P1.2 FOR MORE INFORMATION.
- 11 PROVIDE UNDERFLOOR SANITARY WASTE CONNECTIONS TO THE EXISTING SANITARY SERVICE (PROVIDED BY LANDLORD). FIELD VERIFY EXISTING UNDERGROUND PIPING LOCATION, DEPTH AND SIZE AT POINT OF NEW CONNECTION PRIOR TO INSTALLATION OF ANY UNDERGROUND PIPING.
- 12 TRAP PRIMER PIPING.
- 13 ESTABLISH THE EXACT LOCATION AND SIZE OF UTILITY SERVICES PRIOR TO BUILDING ROUGH-IN. COORDINATE LOCATION OF BUILDING SERVICE ENTRANCES AND SYSTEM PIPE ROUTING WITH UTILITY SERVICE MAINS ON SITE AND ADJUST FOR SPECIFIC SITE FEATURES AND FIELD CONDITIONS ENCOUNTERED.
- 14 ROUTE 2" UNDERFLOOR SANITARY UP TO BOTTLE FILLING STATION (BFS-1).

**UNDERGROUND PLAN**  
 SCALE: 1/4" = 1'-0"

**EXCEL**  
 ARCHITECTS • ENGINEERS • SURVEYORS  
 1200 HAMELOT DRIVE  
 FOND DU LAC, WI 54935  
 PHONE: (920) 926-9800  
 WWW.EXCELENGINEER.COM

**PROJECT INFORMATION**  
 PROJECT NUMBER 1823380

TENANT BUILD-OUT FOR:  
**ASPEN DENTAL**  
 4011 WARDS ROAD • LYNCHBURG, VA 24502

PROFESSIONAL SEAL

**SHEET DATES**

ISSUE DATE	MAY 31, 2018
REVISIONS	

**SHEET INFORMATION**  
 UNDERGROUND PLAN  
 SHEET NUMBER  
**P1.U**