

LIGHT FIXTURE SCHEDULE

TYPE	DESCRIPTION	VOLT.	LAMP		MANUFACTURER / CATALOG NO.	REMARKS
			QTY.	TYPE		
LAY-IN TROFFERS						
A	2X2 LED LAY-IN TROFFER	120V	-	LED	METALUX / Z2EN-LD1-34-UNV-L840-CD1-U	OFCI
DOWNLIGHTS						
B	LED DOWNLIGHT	120V	-	LED	HALO / H750T-ML5609840-692SC	OFCI(3)
STRIPLIGHT						
S81	LINEAR LED STRIPLIGHT	120V	-	LED	METALUX / 8TNSLED-LD4-75SL-LN-UNV-L850-CD1-U / SCF-36-B	OFCI (1)(2)
EMERGENCY/EXIT						
XE	COMBO SINGLE/DOUBLE FACE EXIT W/EM HEADS	120V	-	W/FIXTURE	EVENLITE / TCUCOM-2x0.5-G-U-W	OFCI
R2	EXTERIOR TWINHEAD REMOTE EMERGENCY LAMPS	120V	-	W/FIXTURE	EVENLITE / TCXWP2	OFCI
EM1	WALL / CEILING BATTERY EMERGENCY LIGHT	120V	-	W/FIXTURE	EVENLITE / TCL-2-W	OFCI

- COORDINATE FIXTURE LOCATIONS, CEILING COMPATIBILITY AND TRIM TYPE WITH ARCHITECT'S REFLECTED CEILING GRID.

MAKE ADJUSTMENTS TO LAYOUT AS REQUIRED.

REMARKS:

OFCI = OWNER FURNISHED, CONTRACTOR INSTALLED.

(1) PROVIDE CADDY T-GRID BOX HANGER AND 4" BOX FOR MOUNTING. VERIFY STEM LENGTH TO MOUNT BOTTOM OF FIXTURE AT 7'-0" AFF.

(2) ALL MOUNTING STEMS SUPPLIED BY OWNER.

(3) LIGHT HOUSING FOR "B" FIXTURE TO BE PROVIDED BY EC. HOUSING TO BE COOPER H750T.

NOTE:

ALL LIGHT FIXTURES LISTED ON THE SCHEDULE ABOVE WILL BE FURNISHED BY OWNER AND INSTALLED BY E.C.  
E.C. SHALL PROVIDE ALL NECESSARY MOUNTING ACCESSORIES, HARDWARE HANGARS, SWITCHES, ETC THAT ARE NOT SUPPLIED WITH FIXTURE/DEVICE UNLESS OTHERWISE NOTED IN THE ABOVE SCHEDULE.

3 Ø FEEDER SCHEDULES

3 WIRE FEEDERS			4 WIRE FEEDERS		
FEEDER DESIGNATION	CONDUIT SIZE(S)	CONDUCTORS & GROUNDING CONDUCTOR(S) SIZES	FEEDER DESIGNATION	CONDUIT SIZE(S)	CONDUCTORS & GROUNDING CONDUCTOR(S) SIZES
20-3G	1/2"	(3) #12 & #12 GND	20-4G	1/2"	(4) #12 & #12 GND
25-3G	3/4"	(3) #10 & #10 GND	25-4G	3/4"	(4) #10 & #10 GND
30-3G	3/4"	(3) #10 & #10 GND	30-4G	3/4"	(4) #10 & #10 GND
35-3G	3/4"	(3) #8 & #10 GND	35-4G	3/4"	(4) #8 & #10 GND
40-3G	3/4"	(3) #8 & #10 GND	40-4G	3/4"	(4) #8 & #10 GND
45-3G	3/4"	(3) #8 & #10 GND	45-4G	3/4"	(4) #8 & #10 GND
50-3G	1"	(3) #8 & #10 GND	50-4G	1"	(4) #8 & #10 GND
60-3G	1"	(3) #4 & #8 GND	60-4G	1-1/4"	(4) #4 & #8 GND
70-3G	1"	(3) #4 & #8 GND	70-4G	1-1/4"	(4) #4 & #8 GND
80-3G	1"	(3) #3 & #8 GND	80-4G	1-1/4"	(4) #3 & #8 GND
90-3G	1-1/4"	(3) #2 & #8 GND	90-4G	1-1/4"	(4) #2 & #8 GND
100-3G	1-1/4"	(3) #2 & #8 GND	100-4G	1-1/4"	(4) #2 & #8 GND
110-3G	1-1/4"	(3) #1 & #8 GND	110-4G	1-1/2"	(4) #1 & #8 GND
125-3G	1-1/4"	(3) #1 & #8 GND	125-4G	1-1/2"	(4) #1 & #8 GND
200-3G	2"	(3) #3/0 & #2 GND	200-4G	2"	(4) #3/0 & #2 GND
225-3G	2"	(3) #4/0 & #2 GND	225-4G	2-1/2"	(4) #4/0 & #2 GND
400-3G	3"	(3) 500 kcmil & #1/0 GND	400-4G	3-1/2"	(4) 500 kcmil & #1/0 GND

NOTE: Ground Conductor Size May Be Reduced Based On Overcurrent And/Or Ground Fault Protection Equipment (NEC Table 250.118).

NOTE: Conductor Sizes Listed Above Are For Copper.

BRANCH CIRCUIT FEEDER SCHEDULE

AMP/POLE	CONDUIT.	CONDUCTOR	CON.
15A/1P OR 15A/2P	(2) #12	#12	1/2"
20A/1P OR 20A/2P	(2) #12	#12	1/2"
15A/3P OR 20A/3P	(2) #12	#12	1/2"
25A/1P OR 25A/2P	(2) #10	#10	1/2"
30A/1P OR 30A/2P	(2) #10	#10	1/2"
25A/3P OR 30A/3P	(2) #10	#10	1/2"
35A/1P OR 35A/2P	(2) #8	#8	3/4"
40A/1P OR 40A/2P	(2) #8	#8	3/4"
35A/3P OR 40A/3P	(2) #8	#8	3/4"
45A/1P OR 45A/2P	(2) #6	#6	1"
50A/1P OR 50A/2P	(2) #6	#6	1"
55A/1P OR 55A/2P	(2) #6	#6	1"
60A/1P OR 60A/2P	(2) #4	#4	1 1/4"
60A/3P OR 80A/3P	(3) #4	#4	1 1/4"
90A/3P	(3) #3	#3	1 1/4"
100A/3P OR 110A/3P	(3) #2	#2	1 1/2"
125A/3P	(3) #1	#1	1 1/2"

- PROVIDE BRANCH CIRCUIT FEEDERS AS NOTED ABOVE, UNLESS NOTED OTHERWISE.

DESCRIPTION	BKR	A	B	C	BKR	DESCRIPTION	
1 LIGHTS EXITS / NIGHT LIGHTS	20/1	930			20/1	RECEP MECH ROOM	2
3 LIGHTS CARE AREAS & LABS	20/1		1184		20/1	RECEP MECH ROOM	4
5 LIGHTS OFFICES, PUBLIC SPACES, AND B.O.H	20/1			1795	20/1	RECEP PHONE BOARD	6
7 MISC BATHROOM FANS, CIRC PUMP	20/1	960			20/1	RECEP BREAK ROOM	8
9 MISC CONTRACTOR CIRCUIT	20/1		1580		20/1G	RECEP BREAK ROOM MW	10
11 RECEPTION LAB	20/1			1260	20/1G	RECEP BREAK ROOM REF	12
13 RECEPTION LAB	20/1	1080			20/1	RECEP HALLWAY / WOMEN'S	14
15 RECEPTION LAB	20/1		1180		20/1	MOTOR HAND DRYER	16
17 RECEPTION LAB	20/1			900	20/1	RECEP INT. WAITING, CONSULT.	18
19 RECEPTION LAB	20/1	1080			20/1	RECEP RECEPTION / MEN'S	20
21 RECEPTION LAB	20/1		1260		20/1	RECEP TREATMENT #7	22
23 RECEPTION LAB	20/1			1260	20/1	RECEP TREATMENT #7	24
25 RECEPTION LAB	20/1	900			20/1	RECEP STERILIZATION	26
27 RECEPTION LAB	20/1		1080		20/1	RECEP LAB REF	28
29 RECEPTION LAB	20/1			1260	20/1	RECEP TREATMENT #6	30
31 RECEPTION LAB	20/1	1800			20/1	RECEP TREATMENT #6	32
33 RECEPTION LAB	20/1		1800		20/1	RECEP TREATMENT #5	34
35 RECEPTION LAB	20/1			1360	20/1	RECEP TREATMENT #4	36
37 RECEPTION TREATMENT #1	20/1	2520			20/1	RECEP PASS-THROUGH X-RAY	38
39 RECEPTION TREATMENT #2	20/1		2520		20/1	RECEP TREATMENT #3	40
41 RECEPTION MANAGER/ DOCTOR OFFICE	20/1			1340	20/1	RECEP INTRA-ORAL CPU	42
43 MOTOR HAND DRYER	20/1	2000			20/1	MISC INTRA-ORAL X-RAY	44
45 RECEPTION BUSINESS OFFICE	20/1		1220		20/1G	RECEP BOTTLE FILLER	46
47 RECEPTION BUSINESS OFFICE	20/1			1920	20/1	MISC SIGNAGE	48
49 RECEPTION BUSINESS OFFICE	20/1	1920			20/1	MISC SIGNAGE	50
51 RECEPTION BUSINESS OFFICE	20/1		1560		20/1	MISC SIGNAGE	52
53 SPARE	20/1	0		0	20/1	SPARE	54
55 SPARE	20/1	0		0	20/1	SPARE	56
57 SPARE	20/1		0		20/1	SPARE	58
59 SPARE	20/1			0	20/1	SPARE	60
61 SPARE	20/1	0			20/1	SPARE	62
63 SPARE	20/1		1500		20/1	MISC EWH-1	64
65 RECEPTION ROOFTOP	20/1			1610	20/2	MISC WH-1	66
67 MOTOR RTAC-1	25/3	3649			/2	MISC	68
69 MOTOR	/3		3399		20/2	RECEP PANORAMIC XRAY	70
71 MOTOR	/3			3399	/2	RECEP	72
73 MOTOR RTAC-2	30/3	4529			20/2	RECEP STERILIZER	74
75 MOTOR	/3		4529		/2	RECEP	76
77 MOTOR	/3			4579	/2	MOTOR VACUUM SYSTEM	78
79 MOTOR RTAC-3	25/3	4099			/2	MOTOR	80
81 MOTOR	/3		3859		30/2	MOTOR AIR COMPRESSOR	82
83 MOTOR	/3			3859	/2	MOTOR	84

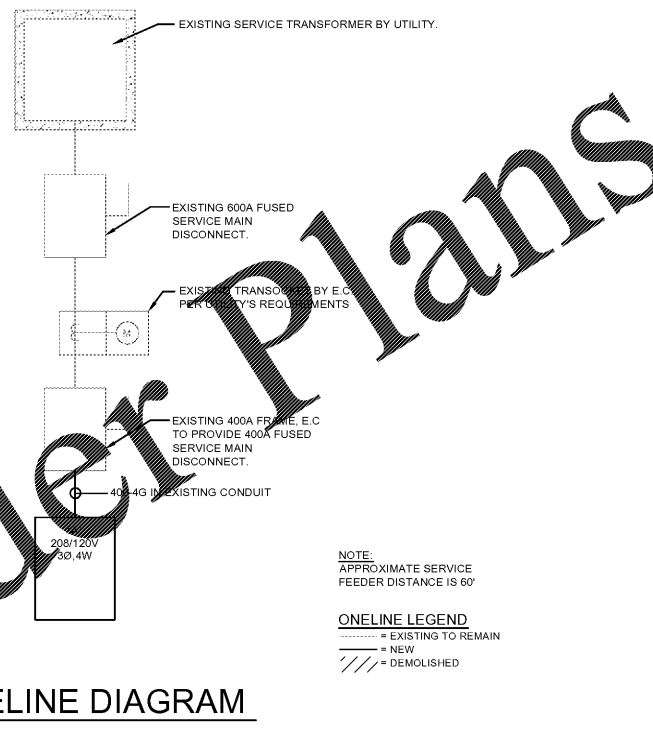
TOTAL VA PER PHASE	25467	26671	24542
TOTAL CONNECTED	76.7 KVA	213.0 AMPERES	
TOTAL DIVERSIFIED	65.2 KVA	181.0 AMPERES	

(1) CONTRACTOR SHALL VERIFY AVAILABLE FAULT CURRENT PRIOR TO ORDERING EQUIPMENT  
- G SUFFIX DENOTES GFI TYPE BREAKER  
E.C. SHALL MAKE FINAL TERMINATION ONCE PANELBOARD IS INSTALLED.

LEGEND

NOTE: ALL SYMBOLS SHOWN MAY NOT APPEAR ON DRAWINGS. ALL MOUNTING HEIGHTS ARE TYPICAL UNLESS OTHERWISE NOTED.

SYM.	IDENTIFICATION	SYM.	IDENTIFICATION
LIGHTING			
○	RECESSED, SURFACE, OR PENDANT MOUNTED LIGHT FIXTURE	⏏	EMERGENCY LIGHT MOUNT 11"-0" AFF TO TOP OR 8" BELOW CEILING, WHICHEVER IS LOWER
○+	WALL MOUNTED LIGHT FIXTURE MOUNT 7'-0" AFF OR 8" ABOVE MIRROR	⏏	RECESSED EMERGENCY LIGHT
○	RECESSED, SURFACE MOUNTED, OR CHAIN HUNG LIGHT FIXTURE	⏏	EXIT LIGHT
○	PENDANT FIXTURE	⏏	OCCUPANCY SENSOR
⏏	EXTERIOR WALL MOUNTED OR INTERIOR WALL WASH FIXTURE	⏏	WALL MOUNTED OCCUPANCY SENSOR WITH SWITCH
⏏	SINGLE HEAD POLE MOUNTED FIXTURE	⏏	DUAL LEVEL CIRCUIT OCCUPANCY SENSOR WITH SWITCH
⏏	DOUBLE HEAD POLE MOUNTED FIXTURE	⏏	PHOTO CONTROL
WIRING DEVICES			
⏏	SINGLE POLE SWITCH MOUNT 46" AFF TO CENTER, 3 = 3 WAY, 4 = 4 WAY, P = PILOT, D = DIMMER, K = KEYS	MW	DUPLEX RECEPTACLE MOUNT 18" AFF TO CENTER IN CABINET BEHIND COUNTER/WAVE, FIELD MOUNT 18" AFF TO CENTER
⏏	DUAL LEVEL SWITCH MOUNT 46" AFF TO CENTER SEE DETAIL	⏏	POWER RECEPTACLE MOUNT 18" AFF TO CENTER
⏏	LOW VOLTAGE SWITCH MOUNT 46" AFF TO CENTER	⏏	SWITCH BOTTOM HALF OF RECEPTACLE, TOP HALF UNSWITCHED
⏏	SIMPLEX RECEPTACLE MOUNT 18" AFF TO CENTER	⏏	SPECIAL OUTLET
⏏	DUPLEX RECEPTACLE MOUNT 18" AFF TO CENTER	⏏	JUNCTION BOX
⏏	TRIPLE DUPLEX RECEPTACLE MOUNT 18" AFF TO CENTER	⏏	COMBINATION FLOOR OUTLET/BLANK JUNCTION BOX - WIREMOLD - RESOURCE RFB/SERIES OR EQUIVALENT, 1" C STUB INTO ACCESSIBLE SPACE
⏏	DUPLEX RECEPTACLE MOUNT 6" ABOVE COUNTER BACKSPLASH TO CENTER	⏏	BLANK BOX 4" EXTRA DEEP BOX, SINGLE GANG RING, BLANKPLATE, 1" C STUB INTO ACCESSIBLE SPACE, MOUNT 18" AFF TO CENTER
⏏	DUPLEX RECEPTACLE SURFACE MOUNTED 6" AFF TO CENTER	⏏	ABOVE COUNTER BLANK BOX, 4" EXTRA DEEP BOX, SINGLE GANG RING, BLANKPLATE, 1" C STUBBED INTO ACCESSIBLE SPACE, MOUNT 6" ABOVE BACKSPLASH TO CENTER
MOTORS / MOTOR CONTROL / EQUIPMENT			
⏏	DISCONNECT FURNISHED BY EC	⏏	MANUAL STARTER
⏏	NON-COMBINATION STARTER	⏏	MOTOR CONNECTION
⏏	COMBINATION STARTER	⏏	MOTOR CONNECTION REQUIRING REMOTE STARTER/VFD
⏏	SURFACE MOUNTED PANELBOARD	⏏	EQUIPMENT CONNECTION
⏏	RECESSED PANELBOARD	⏏	SURFACE MOUNTED RACEWAY
FIRE ALARM / LIFE SAFETY			
⏏	STROBE MOUNT 84" AFF TO TOP OR 6" BELOW CEILING WHICHEVER IS LOWER	M	MAGNETIC DOOR HOLDER
⏏	SPEAKER - CEILING MOUNTED W = WALL MOUNTED	FS	SPRINKLER FLOW SWITCH
⏏	HORN/STROBE MOUNT 84" AFF TO TOP OR 6" BELOW CEILING WHICHEVER IS LOWER	TS	SPRINKLER TAMPERS SWITCH
⏏	SPEAKER/STROBE MOUNT 84" AFF TO TOP OR 6" BELOW CEILING WHICHEVER IS LOWER	R	SPRINKLER BELL
⏏	HORN (SOUNDER) MOUNT 84" AFF TO TOP OR 6" BELOW CEILING WHICHEVER IS LOWER	FACP	FIRE ALARM CONTROL PANEL
⏏	PULL STATION MOUNT 46" AFF TO CENTER	FAA	FIRE ALARM ANNUNCIATOR PANEL
⏏	HEAT DETECTOR	ARS	AREA OF REFUGE STATION
⏏	SMOKE DETECTOR	ARL	AREA OF REFUGE LIGHTING
⏏	DUCT SMOKE DETECTOR	ARM	AREA OF REFUGE MASTER PANEL
⏏	ELEVATOR SMOKE DETECTOR	ELM	ELEVATOR LANDING MASTER PANEL
⏏	SMOKE DETECTOR WITH SOUNDER BASE	ELS	ELEVATOR LANDING STATION
⏏	CARBON MONOXIDE DETECTOR		
MISCELLANEOUS			
⏏	CONDUIT STUB THROUGH WALL BUSHED EACH END	⏏	PUSHBUTTON, PROVIDE JUNCTION BOX AND CONDUIT, MOUNT AT SWITCH HEIGHT
⏏	CONDUIT WITH BUSHING ON END	⏏	GROUND ROD
⏏	ELECTRICAL HOMERUN, CIRCUIT AS SHOWN	⏏	EKO-THERMIC WELD CONNECTION
*PNL-X	SHARED ELECTRICAL HOMERUN WHEN WIRE TAG HAS (C) ASTERISK PRECEDING PANEL-CIRCUIT INFO	N	NURSE CALL DOME LIGHT
( )	ITEMS AND/OR DEVICES CIRCUITED TOGETHER	P	NURSE CALL PULL CORD
( )	ITEMS AND/OR DEVICES CIRCUITED TOGETHER, BUT SWITCHED SEPARATELY		DETAIL OR SECTION NUMBER SHEET NUMBER
ABBREVIATIONS			
AC	ABOVE COUNTER	HC	HVAC CONTRACTOR
AFF	ABOVE FINISHED FLOOR	IG	ISOLATED GROUND
AFG	ABOVE FINISHED GRADE	IMP	INSULATED METAL PANEL
BZ	BUG ZAPPER	LCP	LIGHTING CONTROL PANEL
DISC	DISCONNECT	NL	NIGHT LIGHT
DW	DISHWASHER	NTS	NOT TO SCALE
EC	ELECTRICAL CONTRACTOR	OC	ON CENTER
ELEV	ELEVATION	PC	PURGING CONTRACTOR
EM	EMERGENCY	PNL	PANELBOARD
ETR	EXISTING TO REMAIN	REF	REFRIGERATOR
EWV	ELECTRIC WATER COOLER	UC	UNDER COUNTER
FF	FOOT FOAMER	3R	NEMA 3R
FPC	FIRE PROTECTION CONTRACTOR	4X	NEMA 4X
GC	GENERAL CONTRACTOR/CONSTRUCTION MANAGER	WT	WATER TIGHT
GDSP	GARBAGE DISPOSAL	XFMR	TRANSFORMER
GFI	GROUND FAULT CIRCUIT INTERRUPTER		
FIRE RATED WALLS			
■	FIRE - 1 HOUR	■	FIRE - 3 HOUR
■	FIRE - 2 HOUR	■	FIRE - 4 HOUR
COMMUNICATION			
⏏	TELEPHONE OUTLET, 1" C STUB INTO ACCESSIBLE SPACE, MOUNT 18" AFF TO CENTER W = WALL MOUNT 52" AFF TO CENTER	⏏	CEILING MOUNTED SPEAKER
⏏	DATA OUTLET, 1" C STUB INTO ACCESSIBLE SPACE, MOUNT 18" AFF TO CENTER X = NUMBER OF DATA DROPS PER BOX	⏏	WALL MOUNTED SPEAKER
⏏	COMBINATION TELEPHONE/DATA, 1" C STUB INTO ACCESSIBLE SPACE, MOUNT 18" AFF TO CENTER	⏏	TELEVISION OUTLET MOUNT 18" AFF TO CENTER
⏏	LOCAL VOLUME CONTROL		



ONLINE DIAGRAM  
NO SCALE

NOTE:  
APPROXIMATE SERVICE FEEDER DISTANCE IS 60'

ONLINE LEGEND  
⋯⋯⋯ EXISTING TO REMAIN  
- - - - - NEW  
/// // DEMOLISHED

Order Plans

**EXCEL**  
ARCHITECTS • ENGINEERS • SURVEYORS  
100 CAMBECT DRIVE  
FOND DU LAC, WI 54935  
PHONE: (920) 926-9800  
WWW.EXCELENGINEER.COM

PROJECT INFORMATION

PROJECT NUMBER 1823380

TENANT BUILD-OUT FOR:  
**ASPEN DENTAL**  
4011 WARDS ROAD • LYNCHBURG, VA 24502

PROFESSIONAL SEAL

SHEET DATES

ISSUE DATE MAY 31, 2018

REVISIONS

SHEET INFORMATION

LEGEND, GENERAL SCHEDULES & ONLINE

SHEET NUMBER

**E0.1**