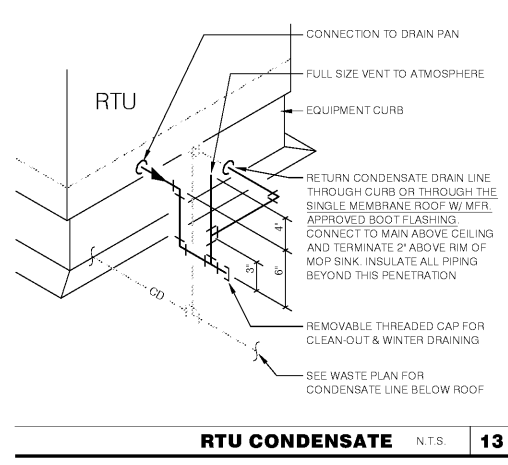
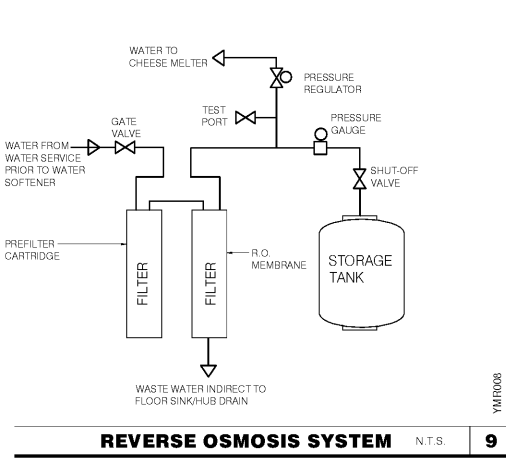


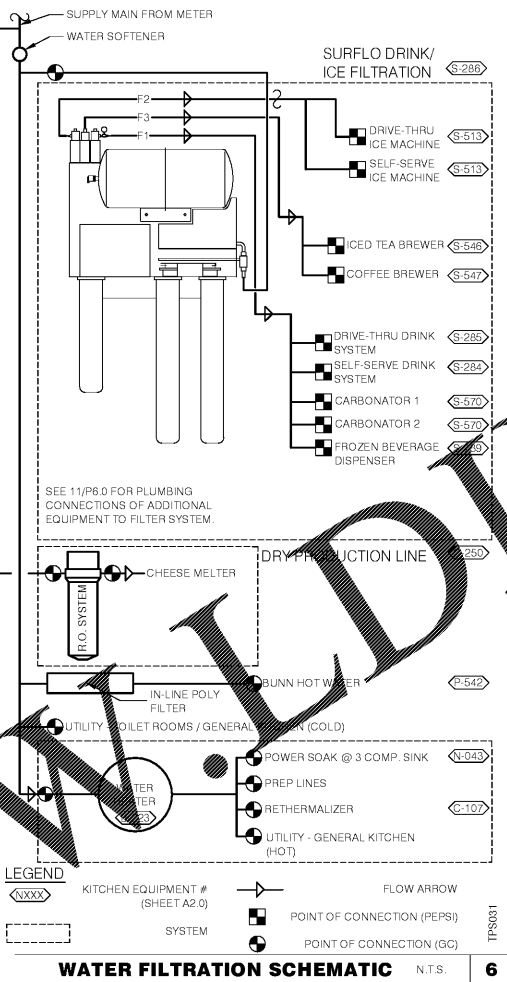
TEMPERING VALVE N.T.S. **17**



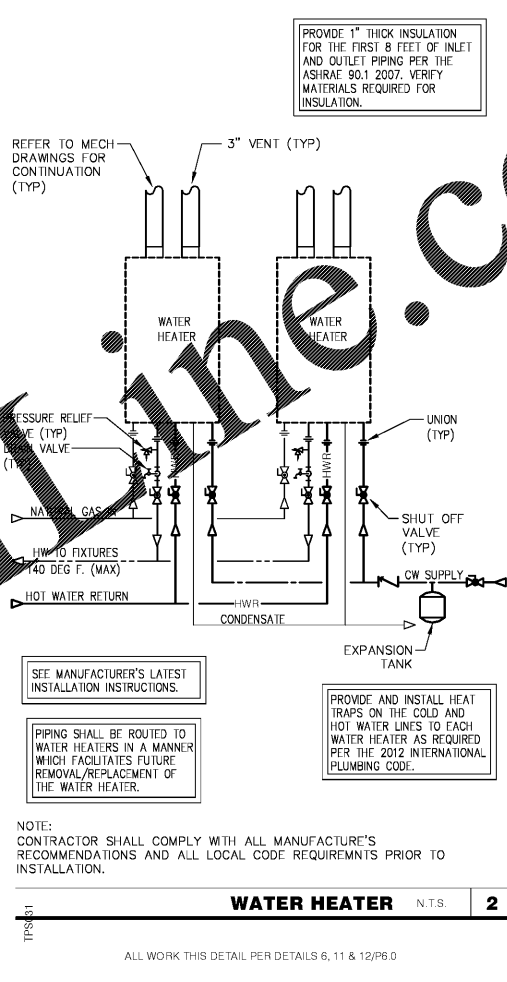
RTU CONDENSATE N.T.S. **13**



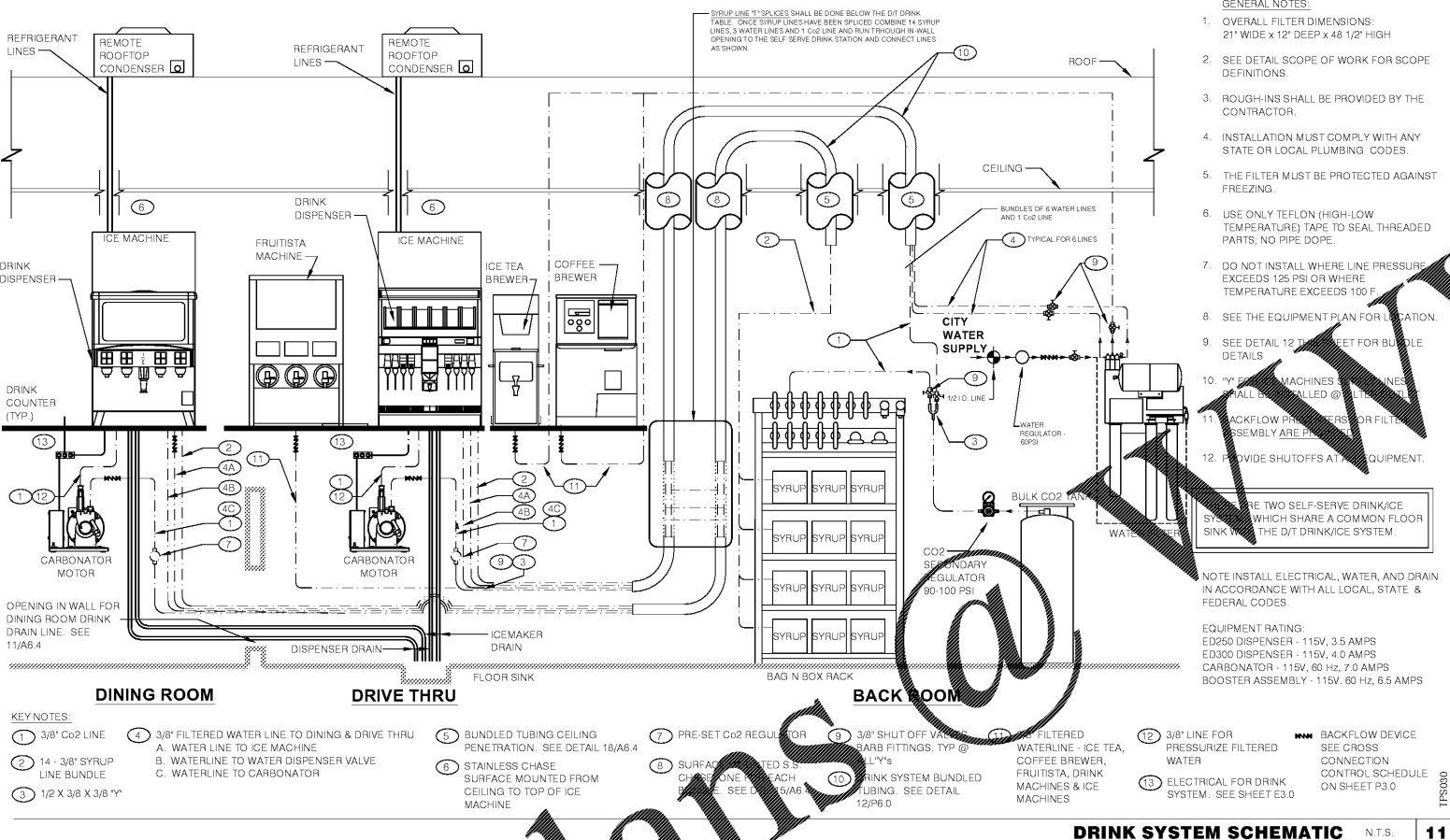
REVERSE OSMOSIS SYSTEM N.T.S. **9**



WATER FILTRATION SCHEMATIC N.T.S. **6**

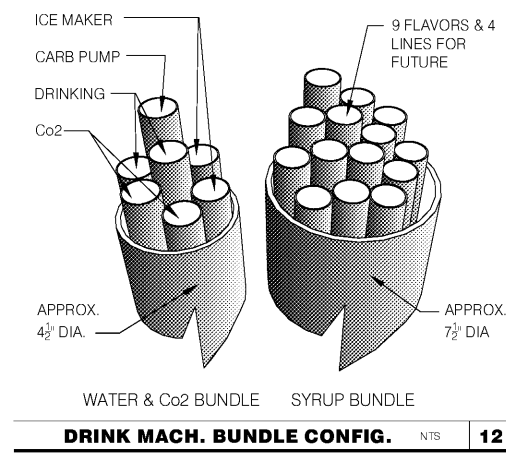


WATER HEATER N.T.S. **2**

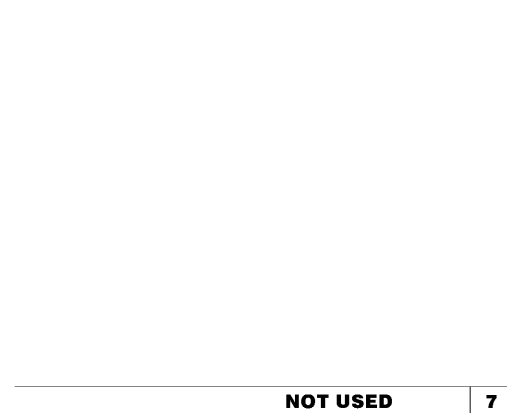


DRINK SYSTEM SCHEMATIC N.T.S. **11**

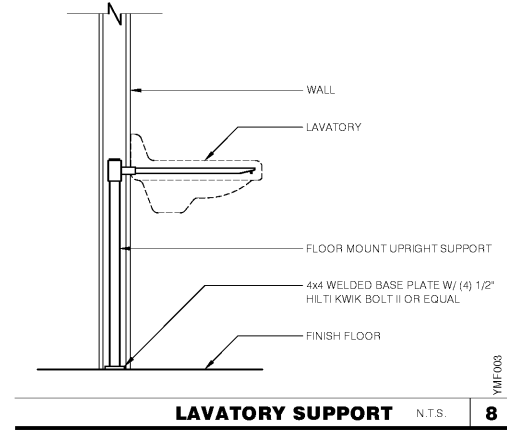
- KEY NOTES:**
- 1. 3/8" Co2 LINE
 - 2. 14' - 3/8" SYRUP LINE BUNDLE
 - 3. 1/2 X 3/8 X 3/8 "F"
 - 4. 3/8" FILTERED WATER LINE TO DINING & DRIVE THRU
 - 5. BUNDLED TUBING CEILING PENETRATION. SEE DETAIL 18/A6.4
 - 6. STAINLESS CHASE SURFACE MOUNTED FROM CEILING TO TOP OF ICE MACHINE
 - 7. PRE-SET CO2 REGULATOR
 - 8. SURFACE MOUNTED S.S. CHASE ONE FOR EACH MACHINE. SEE DETAIL 18/A6.4
 - 9. 3/8" SHUT OFF VALVE @ 3/8" BARB FITTINGS. TYP @ 1/2"
 - 10. DRINK SYSTEM BUNDLED PIPING. SEE DETAIL 12/P6.0
 - 11. 3/8" FILTERED WATERLINE - ICE TEA, COFFEE BREWER, FRUITISTA, DRINK MACHINES & ICE MACHINES
 - 12. 3/8" LINE FOR PRESSURIZE FILTERED WATER
 - 13. ELECTRICAL FOR DRINK SYSTEM. SEE SHEET E3.0
 - 14. BACKFLOW DEVICE SEE CROSS CONNECTION CONTROL SCHEDULE ON SHEET P3.0



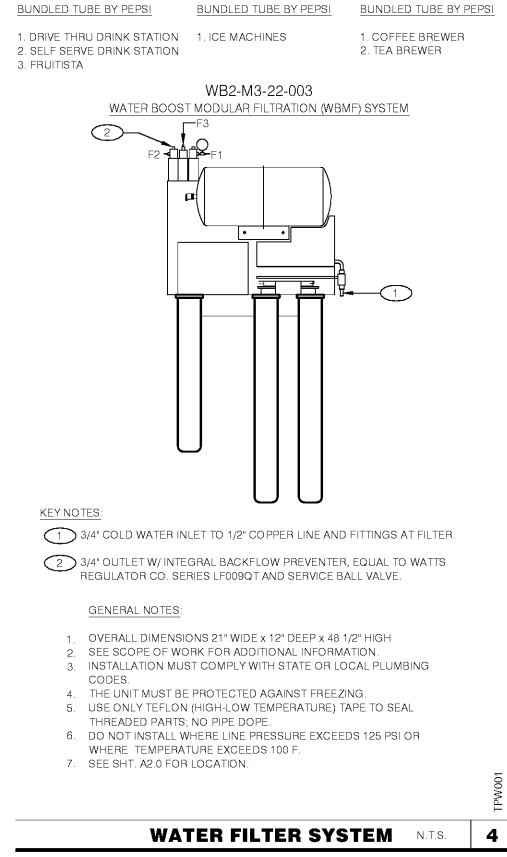
DRINK MACH. BUNDLE CONFIG. N.T.S. **12**



NOT USED **7**



LAVATORY SUPPORT N.T.S. **8**



WATER FILTER SYSTEM N.T.S. **4**

- KEY NOTES:**
- 1. 3/4" COLD WATER INLET TO 1/2" COPPER LINE AND FITTINGS AT FILTER.
 - 2. 3/4" OUTLET W/ INTEGRAL BACKFLOW PREVENTER, EQUAL TO WATTS REGULATOR CO. SERIES LF009QT AND SERVICE BALL VALVE.
- GENERAL NOTES:**
- 1. OVERALL DIMENSIONS 21" WIDE X 12" DEEP X 48 1/2" HIGH
 - 2. SEE SCOPE OF WORK FOR ADDITIONAL INFORMATION.
 - 3. INSTALLATION MUST COMPLY WITH STATE OR LOCAL PLUMBING CODES
 - 4. THE UNIT MUST BE PROTECTED AGAINST FREEZING.
 - 5. USE ONLY TEFLON (HIGH-LOW TEMPERATURE) TAPE TO SEAL THREADED PARTS. NO PIPE DOPE.
 - 6. DO NOT INSTALL WHERE LINE PRESSURE EXCEEDS 125 PSI OR WHERE TEMPERATURE EXCEEDS 100 F.
 - 7. SEE SHT. A2.0 FOR LOCATION.

Order Plans @

Engineering Consultant

J. A. Weaver, P.E.
 955 Market Street
 8c. Lenoir Building
 Raleigh, NC 27601
 Phone: 919.772.0000
 Fax: 919.772.0000



PERMIT/CONSTRUCTION SET

DATE: FEB. 28, 2018

CONTRACT DATE: XX XX XX
 BUILDING TYPE: EXPLORER LITE 40
 PLAN VERSION: DECEMBER 2017
 SITE NUMBER: XXX XXX
 STORE NUMBER: XXXXX

TACO BELL

101 MONTGOMERY CROSSING
 BISCOE, NC 27209

EXPLOER LITE
 MEDIUM 40

PLUMBING DETAILS

P6.0

PLOT DATE: