



1232 washington ave.  
suite 310  
st. louis, mo 63103  
p: 314.241.6262  
f: 314.241.6263  
www.m2astudio.com



Mark J. Gettemeyer, Architect

PERMIT/CONSTRUCTION SET  
DATE: MAY 4, 2018

CONTRACT DATE: XX-XX-XX  
BUILDING TYPE: EXPLORER LITE 40  
PLAN VERSION: DECEMBER 2017  
SITE NUMBER: XXX-XXX  
STORE NUMBER: XXXXX

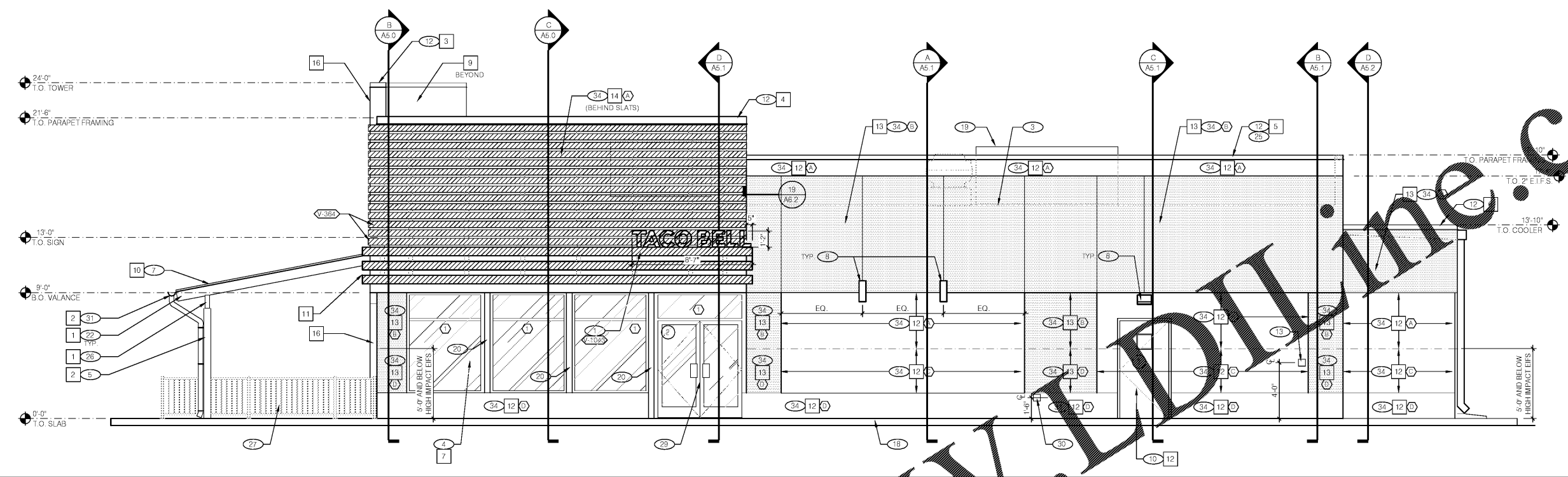
TACO BELL  
101 MONTGOMERY CROSSING  
BISCOE, NC 27209



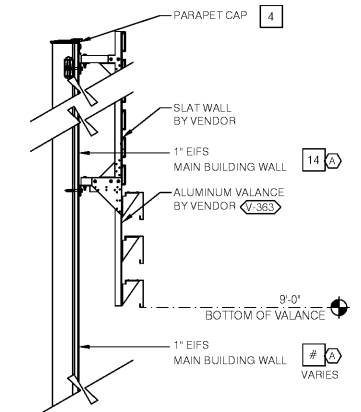
**EXTERIOR ELEVATIONS**

**A4.0**

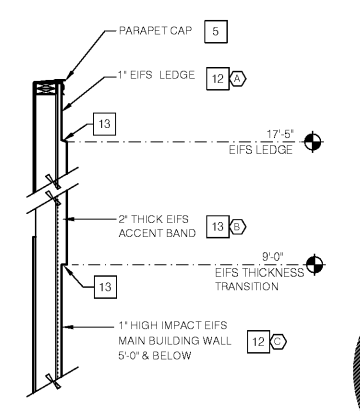
PLOT DATE:



**RIGHT SIDE ELEVATION** 1/4"=1'-0" **A**



**SLAT WALL COLOR TRANSITION** N.T.S. **I**



**EIFS THICKNESS COLOR TRANSITION** N.T.S. **G**

**MISCELLANEOUS**  
SEE SHT A1.1 "WINDOW TYPES" FOR WINDOW ELEVATIONS.

**SEALERS (REFER TO SPECS):**  
A. SEALANT AT ALL WALL AND ROOF PENETRATIONS AND JAMB AND SILL @ WINDOWS.  
APPLY NEOPRENE GASKET (CONT.) SET BY BUILDING VENDOR.

**CRITICAL\* DIMENSIONS:**  
REQUIRED CLEAR OPENING WIDTH TO ENSURE COORDINATION TO STANDARD SIGNAGE/ BUILDING ELEVATION DIMENSIONS.

**NOTE:** NO EXTERIOR WORK ARE IN THE SCOPE OF WORK COVERED BY THE BUILDING PERMIT APPLICATION. THE GENERAL CONTRACTOR SHALL BE RESPONSIBLE FOR COORDINATING THE INSTALLATION OF ALL EXTERIOR SIGNS AND INSTALLATION OF REQUIRED BLOCKING AND ELECTRICAL CONNECTIONS FOR FINAL APPROVED SIGNS.

**PAINTING OVER EIFS/STUCCO:**  
APPLICATOR MUST DO THEIR DUE DILIGENCE WITH PREPARATION.  
PRIMER: 1 COAT SW A24W8300, LOXON CONCRETE & MASONRY PRIMER.  
FINISH: 2 COATS SW A82-100 SERIES, A-100 EXTERIOR LATEX SATIN.

**GENERAL NOTES** **F**

QTY	ITEM DESCRIPTION	ELEC
1	DRIVE THRU CANOPY - 4'-0" D x 9'-0" W x 6" H	X
1	VALANCE SYSTEM	SHADING & LED LAMPING
1	SLAT WALL SYSTEM	

**CANOPY AND BLDG. ACCENT SCHED.** N.T.S. **E**

QTY	ITEM DESCRIPTION	ELEC
2	TB 3'-6" x 4'-0" LOGO BELL - FACE LIT	X
3	TB 14" CHANNEL LETTER - WHITE	X

**SIGN SCHEDULE** N.T.S. **C**

SYMBOL	AREA	MANUFACTURER	COLOR	ALTERNATE MFR	ALTERNATE COLOR	CONTACT INFORMATION
1	CANOPY RAFTER BEAM PAINT	SHERWIN WILLIAMS	SW 3022 WOODSCAPES BLACK ALDER			SHERWIN WILLIAMS, BRAD HARRINGTON BRAD.E.HARRINGTON@SHERWIN.COM (EMAIL)
2	CANOPY COLUMN PAINT	SHERWIN WILLIAMS	SW 7062 ROCK BOTTOM			
3	PARAPET CAP (TOWER)	DUROLAST	MEDIUM BRONZE (FACTORY FINISH)			DURO-LAST; LEE COBB, 800-434-3876 (PHONE)
4	PARAPET CAP (FRONT)	DUROLAST	MEDIUM BRONZE (FACTORY FINISH)			
5	PARAPET CAP COLOR	DUROLAST	MEDIUM BRONZE (FACTORY FINISH)			
6	PARAPET CAP (COOLER)	DUROLAST	MEDIUM BRONZE (FACTORY FINISH)			
7	STOREFRONT WINDOWS	TBD	LEAR ANODIZED			
8	PIPE BOLLARDS	STREET SMART	LOW - 1/4" THICK PLASTIC COVER (US.POSTMAN.COM) OR EQUAL			
9	PARAPET BACK ROOFING	DUROLAST	WOOD LIKE FINISH (THICKNESS = 50 mil)			DURO-LAST; LEE COBB, 800-434-3876 (PHONE)
10	PATIO ROOF	HERRIDGE	5" DECK PREWEATHERED GALVALUME			
11	VALANCE COLOR	VENDOR (T.B.D.)	SW 7034 "STATUS BRONZE" (EQUAL)			
12	MAIN BUILDING COLOR	SHERWIN WILLIAMS	SW 7067 "CITYSCAPE"			SHERWIN WILLIAMS, BRAD HARRINGTON BRAD.E.HARRINGTON@SHERWIN.COM
13	ACCENT COLOR	SHERWIN WILLIAMS	SW 6098 "PACER WHITE"			EIFS CONTACT: STO CORP., CHUCK DUFFIN, 940-894-2092 (PHONE), 940-894-2095 (FAX), CDUFFIN@STOCORP.COM
14	WALL COVER BEHIND SCREE	SHERWIN WILLIAMS	SW 6831 "CLEMATIS"			
16	METAL PANELS	WESTERN STATES METAL ROOFING	18" A806-4 RUSTWALL PANELS			RUSTY FAILS - RUSTY@METALDECK.COM - WWW.METALDECK.COM
17	SLAT WALL	VENDOR (T.B.D.)	WOOD LIKE FINISH (T.B.D. BY VENDOR)			

**EXTERIOR FINISH SCHEDULE** **H**

- 1 BUILDING SIGN, BY VENDOR. REQUIRES ELECTRICAL, SEE ELECTRICAL PLANS.
- 2 DRIVE THRU WINDOW. SEE SHEET A1.0 AND A1.1.
- 3 DASHED LINE INDICATES ROOF BEYOND.
- 4 STOREFRONT, TYPICAL. REFER TO SHEET A1.1.
- 5 TUBE STEEL POST. SEE STRUCTURAL DWGS.
- 6 PAINT SWITCH GEAR AND ALL WALL CONDUITS TO MATCH WALL BEHIND.
- 7 CORRUGATED METAL ROOF.
- 8 LIGHT SCENCE. ALIGN BOTTOM OF FIXTURES MOUNTING PLATE AT 9'-2 1/2"
- 9 ASSUME D/T LANE SURFACE IS 6" BELOW THE FINISH FLOOR. REFER TO GRADING & SITE PLAN.
- 10 PAINT DOOR AND FRAME.
- 11 TOWER WITH METAL PANEL FINISH.
- 12 PARAPET COPING. IF DURO-LAST EDGE TRIM IS USED. USE THE DURO-LAST PRE-FINISHED EDGE TRIM. SEE DETAIL 2/A6.0.
- 13 CO2 FILLER VALVE & COVER. SEE DETAIL 5/A6.2 SIM.
- 14 WALL PACK LIGHT FIXTURE.
- 15 GAS SERVICE. - PAINT ALL PIPING SW7067 CITYSCAPE TO MATCH BUILDING.
- 16 WALL SHALL BE FINISHED PRIOR TO INSTALLATION OF SWITCHGEAR.
- 17 SCUPPER, COLLECTOR, AND VERTICAL DOWNSPOUT 6" MIN. PAINT TO MATCH ADJACENT WALL.
- 18 CONCRETE CURB.
- 19 RTU BEYOND. PAINT TO MATCH MAIN BUILDING COLOR.
- 20 BREAK METAL COVER OVER WOOD STUDS TO MATCH STOREFRONT. SEE 3/A6.1
- 21 OVERFLOW SCUPPER, SEE ROOF PLAN.
- 22 WOOD RAFTERS, SEE STRUCTURAL DWGS.
- 23 BOLLARD - SEE CIVIL PLANS FOR DETAIL.
- 24 SINGLE MEMBRANE ROOFING.
- 25 IF THE DURO LAST PARAPET CAP TRIM IS USED IT SHALL NOT BE PAINTED.
- 26 WOOD HEADER BEAM. SEE STRUCTURAL DWGS.
- 27 PATIO RAILING - SEE SHEET A2.0.
- 28 NOT USED.
- 29 STOREFRONT DOOR. REFER TO DOOR SCHEDULE.
- 30 HOSE BIBB LOCATION. REFER TO PLUMBING AND DETAIL 8/A6.2
- 31 GUTTER AND DOWNSPOUT. PAINT TO MATCH COLUMN.
- 32 METAL AWNING - BY OTHERS.
- 33 NOT USED.
- 34 EIFS (TYP). SEE 2 & 4/A6.2.
- 35 INSTALL DRIP LEDGE AT BOTTOM OF RUST WALL TOWER - SEE DETAILS 8, 12, AND 20/A6.4.

**KEY NOTES** **D**

Order Plans @