



1232 washington ave. suite 310 st. louis, mo 63103 p: 314.241.6262 f: 314.241.6263 www.m2astudio.com



Mark J. Gettemeyer, Architect

PERMIT/CONSTRUCTION SET DATE: MAY 4, 2018

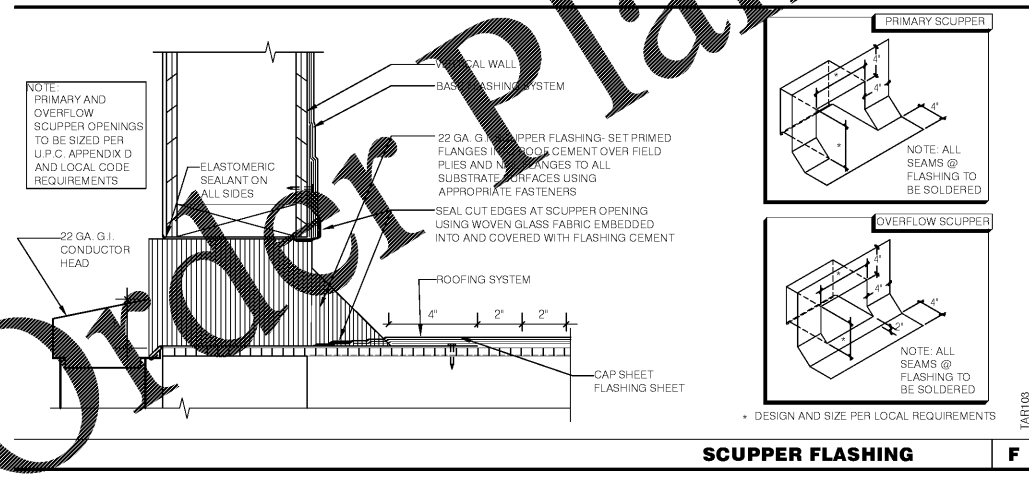
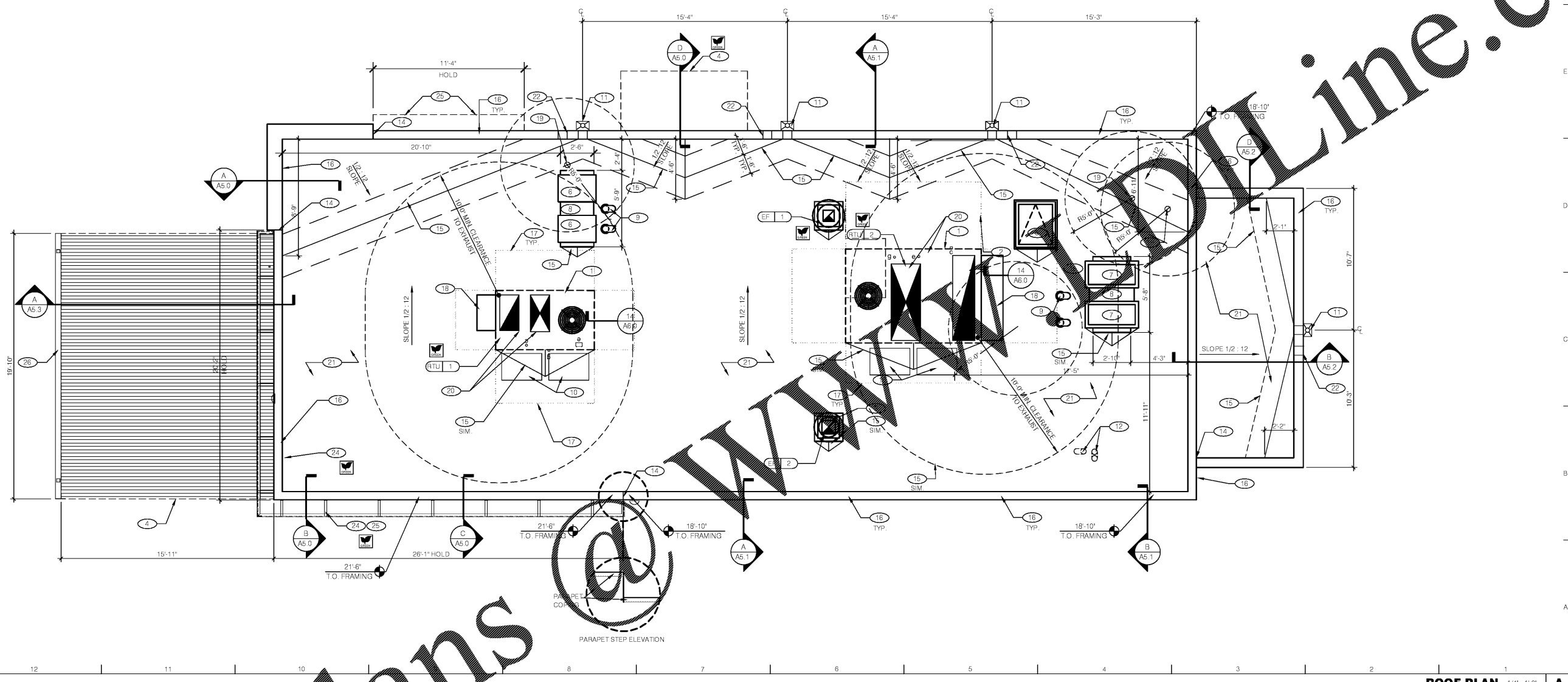
Table with 2 columns: Description, Status. Rows for various construction items.

CONTRACT DATE: XX.XX.XX BUILDING TYPE: EXPLORER LITE 40 PLAN VERSION: DECEMBER 2017 SITE NUMBER: XXX-XXX STORE NUMBER: XXXXX

TACO BELL 101 MONTGOMERY CROSSING BISCOE, NC 27209



ROOF PLAN A3.0 PLOT DATE:



ROOF PLAN NOTES: WATERPROOFING, MISCELLANEOUS, and other technical specifications.

- Key notes 1-16: ROOFTOP UNIT, KITCHEN HOOD EXHAUST FAN, RESTROOM EXHAUST FAN, CANOPY ROOF, ROOF HATCH, ICE MACHINE CONDENSERS, WALK-IN COOLER / FREEZER CONDENSERS, EQUIPMENT PLATFORM, PIPE HOOD FOR UTILITIES, 24x36 WALK MATS, SCUPPER AND DOWNSPOUT, 3" PVC WATER HEATER EXHAUST AND INTAKE FLUES, NOT USED, CHANGE IN PARAPET ELEVATION, ROOF CRICKET, METAL PARAPET CAP.

- Key notes 17-26: MAINTAIN MFR'S ROOFTOP UNIT MAINTENANCE CLEARANCE, OUTSIDE AIR INTAKE FOR ROOFTOP UNIT, WASTE VENT THROUGH ROOF, POWER / GAS / CONDENSATE ENTRY UNDER HVAC UNIT, DURO-LAST SINGLE PLY ROOF MEMBRANE, OVERFLOW SCUPPER, NOT USED, ALUMINUM SLAT WALL BY VENDOR, ALUMINUM VALANCE, GUTTER AND DOWNSPOUT.

Order Plans watermark

@WWW.ONLINE.COM watermark