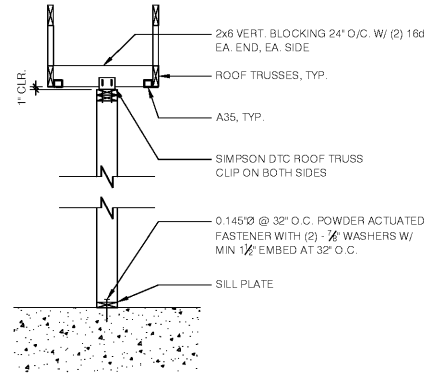
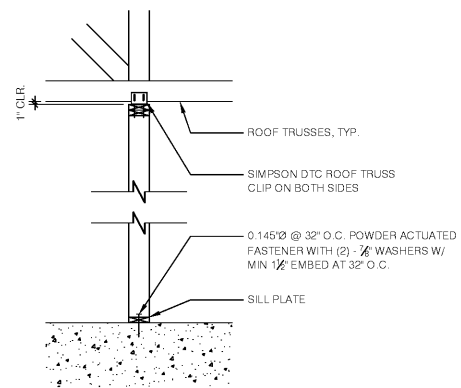


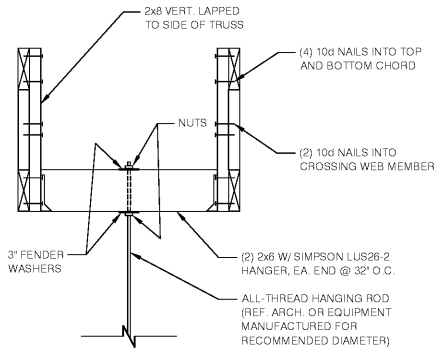
**REAR WALL** N.T.S. **18**



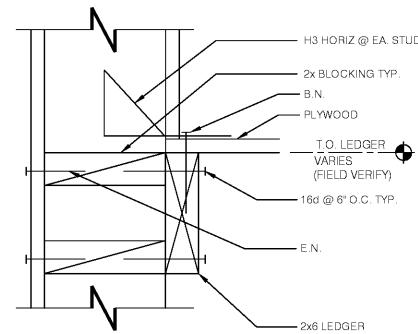
**SUPPORT- PARALLEL TO TRUSS** 1/2" = 1'-0" **13**



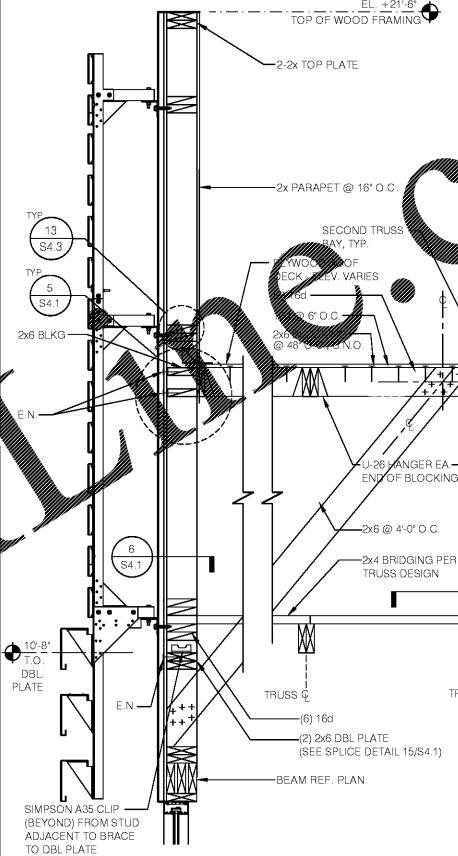
**SUPPORT PERP. TO TRUSS** 1/2" = 1'-0" **14**



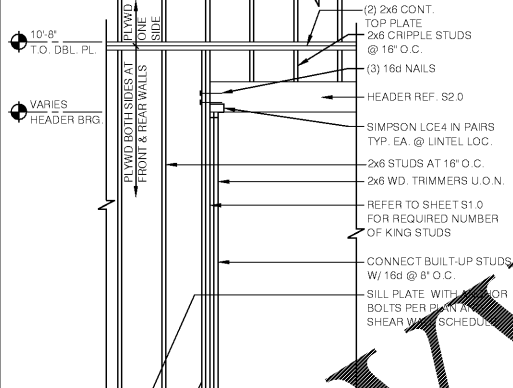
**HANGING BULKHD. OR HOOD DETL.** N.T.S. **9**



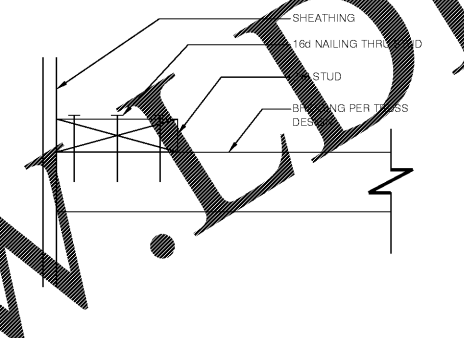
**LEDGER DETAIL** 3/4" = 1'-0" **5**



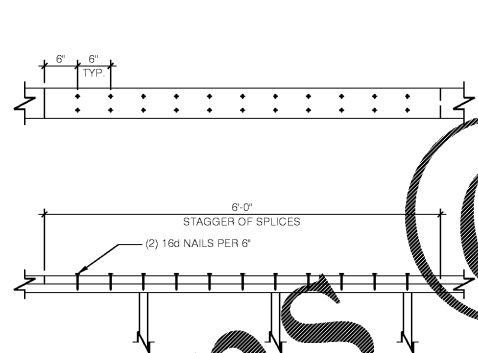
**FRONT WALL** N.T.S. **2**



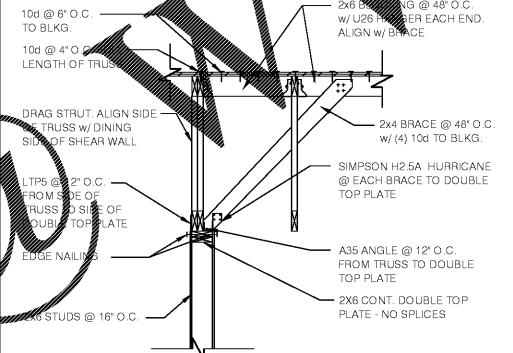
**FRAMING ELEVATION @ OPENING** **10**



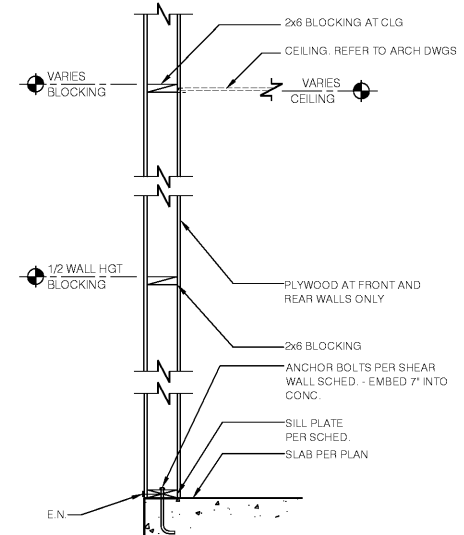
**BRIDGING DETAIL** 3/4" = 1'-0" **6**



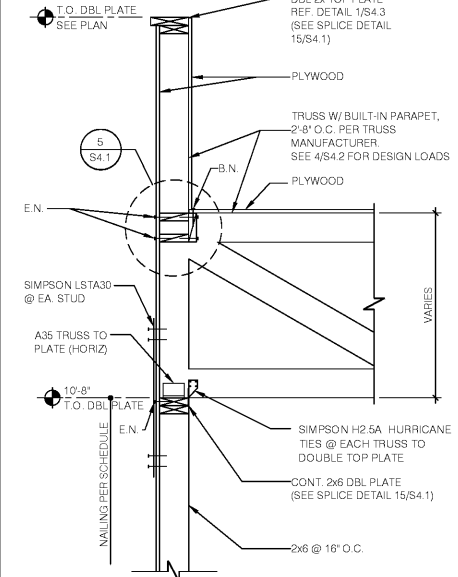
**PLATE LAP DETAIL** 1" = 1'-0" **15**



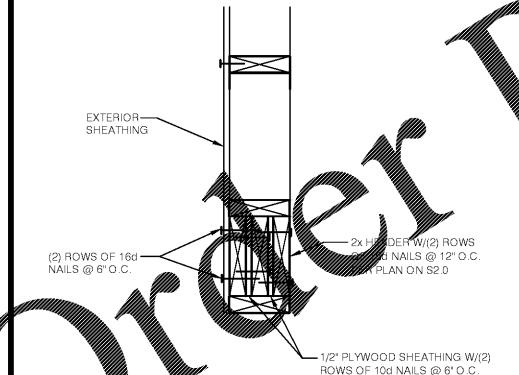
**INTERIOR SHEAR WALL** 1/4" = 1'-0" **11**



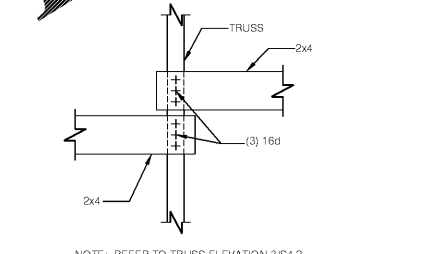
**TYPICAL WALL BELOW TRUSS** 3/4" = 1'-0" **8**



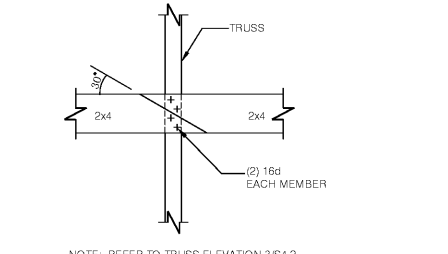
**SIDE WALL @ TRUSS** N.T.S. **4**



**TYP. MULTIPLE HEADER** 1-1/2" = 1'-0" **20**



**BRIDGING LAP DETAIL** N.T.S. **16**



**BRIDGING LAP DETAIL @ OPEN CLG.** N.T.S. **12**



1232 washington ave.  
suite 310  
st. louis, mo 63103  
p: 314.241.6262  
f: 314.241.6263  
www.m2astudio.com



PERMIT/CONSTRUCTION SET  
DATE: MAY 4, 2018  
CONTRACT DATE: XX-XX-XX  
BUILDING TYPE: EXPLORER LITE 40  
PLAN VERSION: DECEMBER 2017  
SITE NUMBER: XXX-XXX  
STORE NUMBER: XXXXX

**TACO BELL**  
101 MONTGOMERY CROSSING  
BISCOE, NC 27209

**EXPLORER LITE**  
MEDIUM 40  
**STRUCTURAL DETAILS FRAMING**  
**S4.1**

PLOT DATE: