

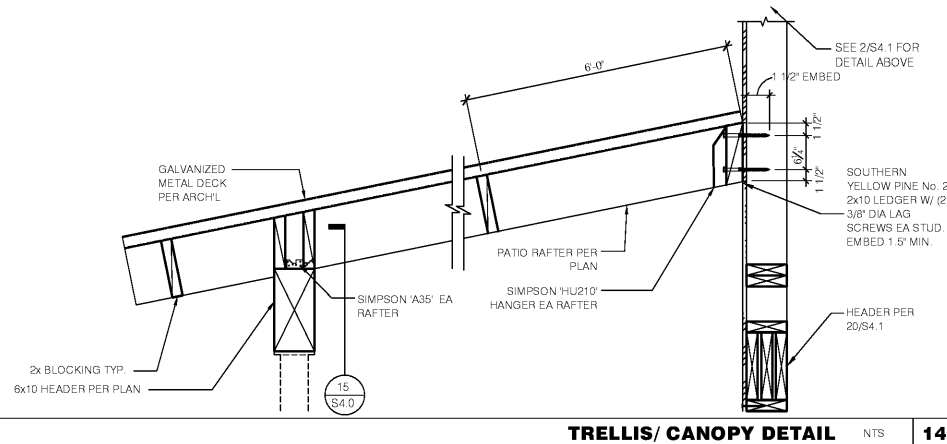
NOT USED NTS 17

NOT USED NTS 13

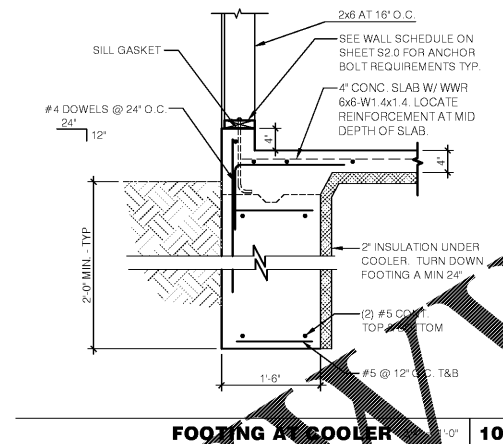
INTERIOR FOOTING AT COOLER 3/4" = 1'-0" 9

NOT USED 3/4" = 1'-0" 5

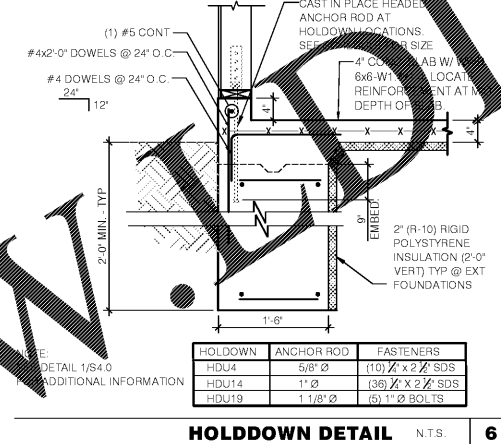
FOOTING @ TYPICAL WALLS 3/4" = 1'-0" 1



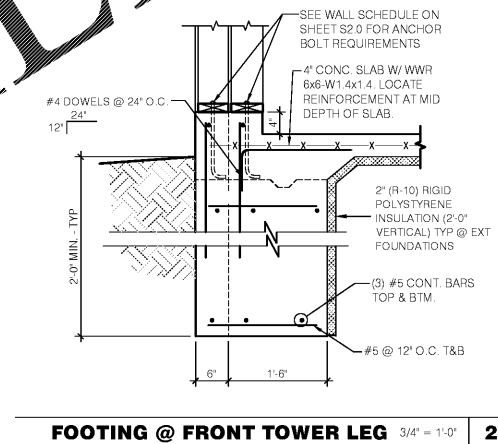
TRELLIS/CANOPY DETAIL NTS 14



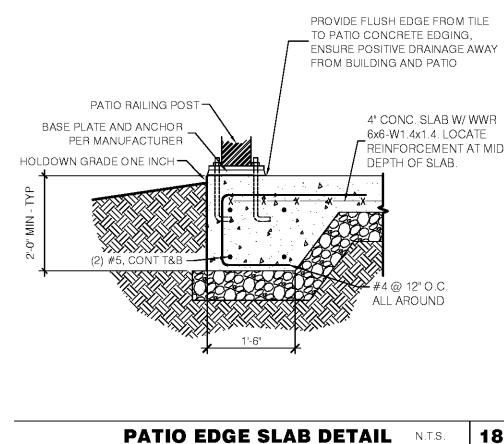
FOOTING AT COOLER 3/4" = 1'-0" 10



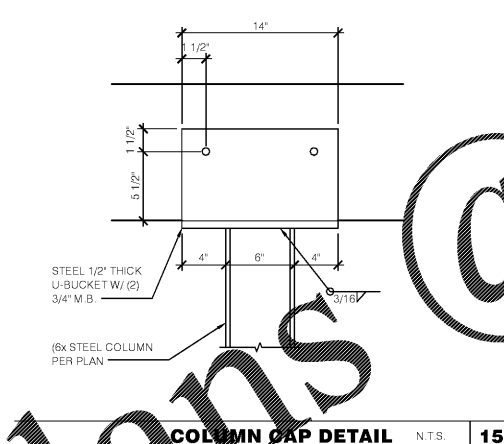
HOLDDOWN DETAIL NTS 6



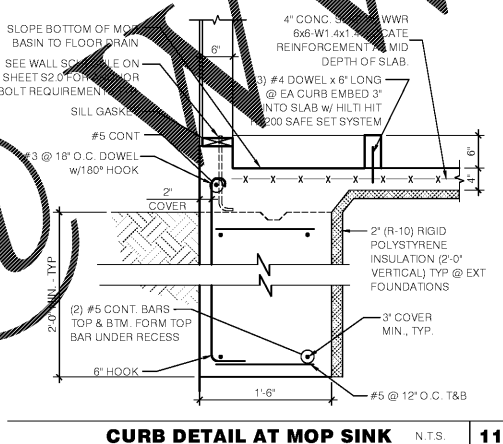
FOOTING @ FRONT TOWER LEG 3/4" = 1'-0" 2



PATIO EDGE SLAB DETAIL NTS 18



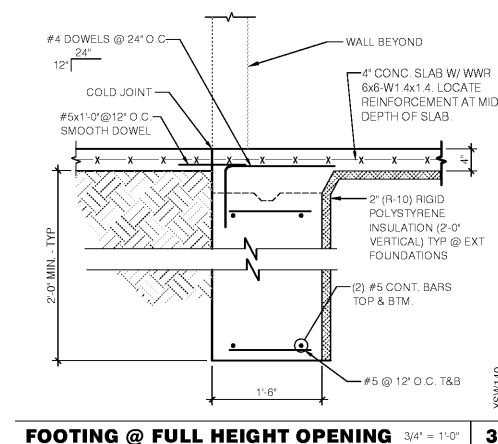
COLUMN CAP DETAIL NTS 15



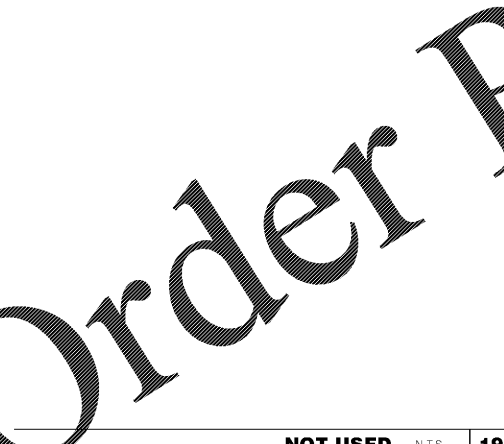
CURB DETAIL AT MOP SINK NTS 11



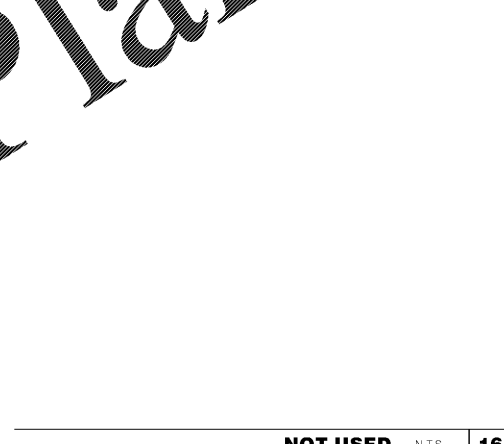
NOT USED NTS 7



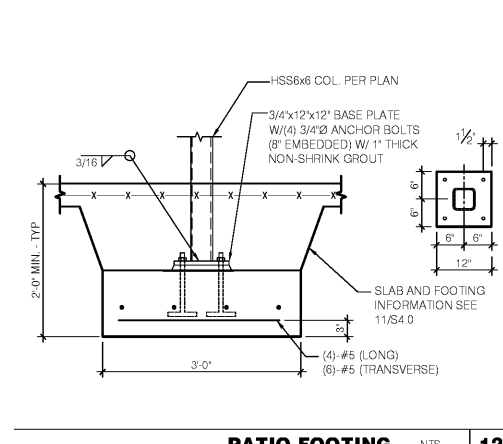
FOOTING @ FULL HEIGHT OPENING 3/4" = 1'-0" 3



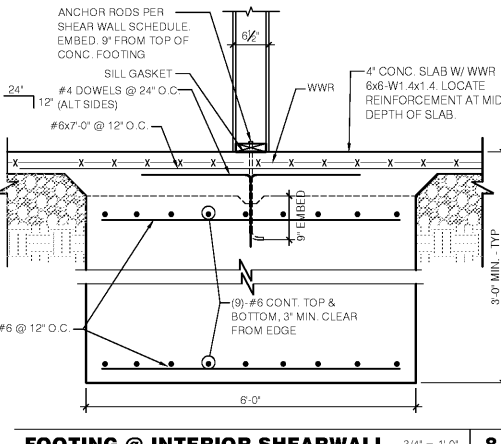
NOT USED NTS 19



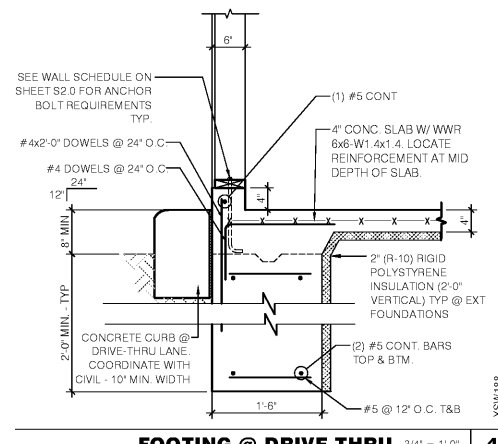
NOT USED NTS 16



PATIO FOOTING NTS 12



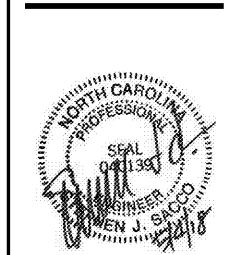
FOOTING @ INTERIOR SHEARWALL 3/4" = 1'-0" 8



FOOTING @ DRIVE THRU 3/4" = 1'-0" 4



1232 washington ave.
suite 310
st. louis, mo 63103
p: 314.241.6262
f: 314.241.6263
www.m2astudio.com



PERMIT/CONSTRUCTION SET
DATE: MAY 4, 2018

CONTRACT DATE: XX XX XX
BUILDING TYPE: EXPLORER LITE 40
PLAN VERSION: DECEMBER 2017
SITE NUMBER: XXX XXX
STORE NUMBER: XXXXX

TACO BELL
101 MONTGOMERY CROSSING
BSCOE, NC 27209

EXPLORER LITE
MEDIUM 40
**STRUCTURAL
DETAILS
FOUNDATION**
S4.0
PLOT DATE:

Order Plans @