

**INSTALLATION NOTES:**

- FOUNDATION WITH ANCHOR BOLTS, REBAR & CONCRETE (FORMS & PUMP FORMS) HANGING BOLT CONNECTIONS, GRANT INSTALLATION MATCH PLATE/GRANITE CONNECTIONS, ANY WELDED CONNECTIONS, ELECTRICAL WIRING AND OVERHEAD ELECTRICAL.
- LANDSCAPING MATERIALS SHOULD BE KEPT MINIMUM TWO INCHES AWAY FROM SIGN POLES OR BASE PLATES.
- THIS DRAWING IS FOR INSTALLATION PURPOSES ONLY AND NOT TO BE USED FOR MANUFACTURING.

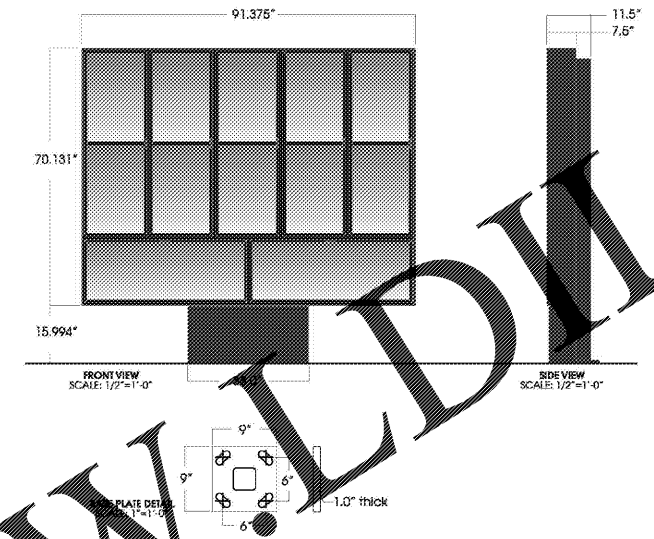
**CONCRETE SPECIFICATIONS:**

CONCRETE SHALL HAVE A MIN. COMPRESSIVE STRENGTH OF 3,000 PSI @ 28 DAYS. REINFORCING STEEL SHALL HAVE A MIN. YIELD STRENGTH OF 60,000 PSI. RECOMMENDED MIN. CURE TIME OF 7 DAYS BEFORE PROCEEDING WITH INSTALLATION.

**ANCHOR BOLT PATTERN:**

ANCHOR BOLTS SHALL BE 1/2\"/>

<p>Everbite 1100 S. 11th St. Suite 200 Greenfield, WI 53220 414-229-7191</p>	<b>INSTALLATION DRAWING</b> THESE DRAWINGS ARE THE EXCLUSIVE PROPERTY OF EVERBITE, LLC. USE OF OR REPRODUCTION IN ANY MANNER WITHOUT EXPRESS WRITTEN PERMISSION OF EVERBITE, LLC IS PROHIBITED.		DRAWN BY: <b>IMPACT-TDT</b> DATE: <b>03/24/17</b>	SITE: <b>STANDARD DRAWING</b>	TITLE: <b>TACO BELL 10' PORTAL @ 10'-0\"/&gt; </b>
	PROJECT NO: <b>360665</b> DRAWING NO: <b>IN360665B</b>	SCALE: <b>AS SHOWN</b>	REV: <b>A</b>	DATE: <b>03/27/17</b>	CHECKED BY: <b>RHB</b>



**GENERAL SPECIFICATIONS:**

Materials: Aluminum sheets & steel poles  
 Decorations: Powder coat Taco Bell Form 3 Black  
 Menu Board Area Squared 44.50 Square Feet  
 Lights: Magnetic LED with mechanical  
 Weight (Est.):  
 • 745 lbs. (frame)  
 • 30 lbs. (uncracked)

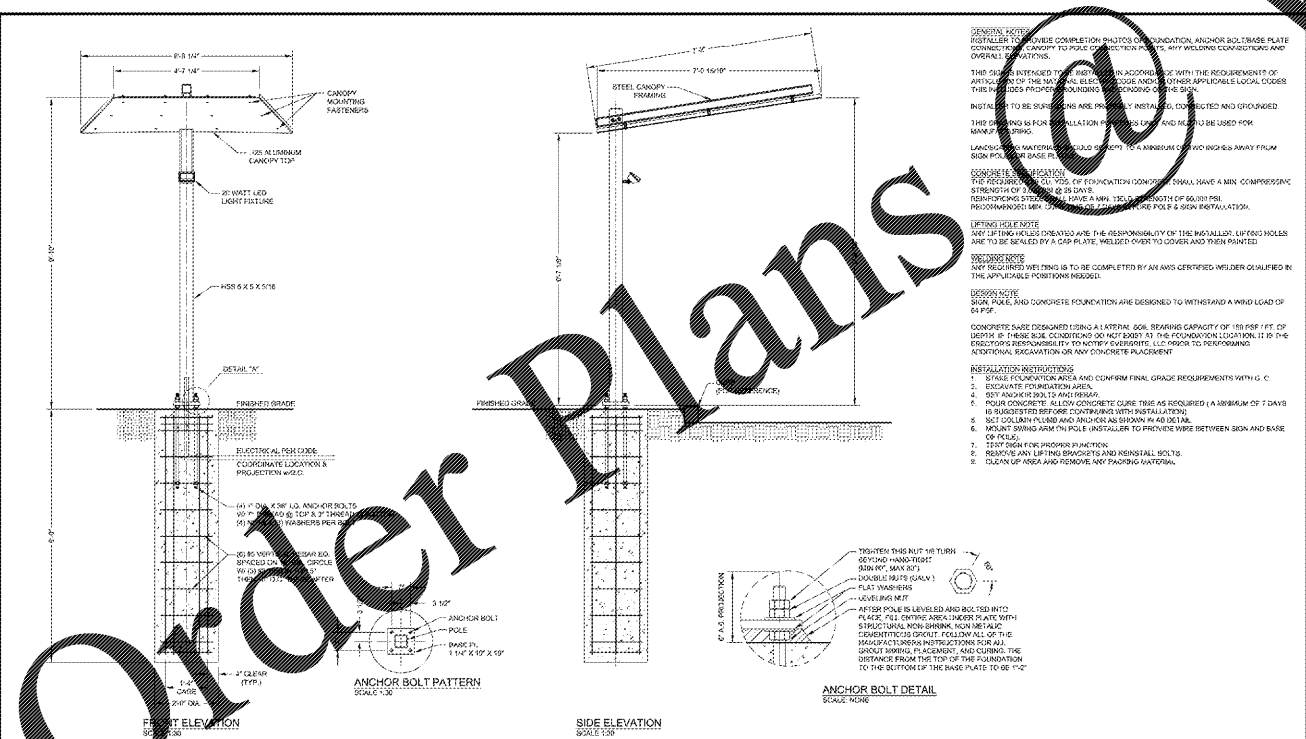
**ELECTRICAL:**

ILLUMINATION:  
 • White LEDs  
 Power Supplies:  
 • (2) 062-00008 Electronic LED Power Supplies  
 Line Load:  
 • 1.92 amps @ 120 vac-60hz  
 • (1) 20 Amp circuit

**COLORS:**

Exterior:  
 Doors & Mullions: Powder coat Taco Bell Black  
 Cabinet: Powder coat Taco Bell Bronze

<p>Everbite LLC 1100 S. 11th St. Suite 200 Greenfield, WI 53220 Phone: 414-229-7191 • Fax: 414-229-7191 Website: www.everbite.com</p>	Part No: <b>606356P</b> Description: <b>Drive Thru Evolucon LED V Manufacturer</b> Website: <b>www.everbite.com</b>	Project No: <b>296136</b> Date: <b>01/17/13</b> Drawn By: <b>RB</b>	
	TITLE: <b>TACO BELL LED SIGN HEATING DRIVE BOARD</b> PROJECT NO: <b>360665</b> DRAWING NO: <b>IN360665B</b>	SCALE: <b>AS SHOWN</b>	REV: <b>A</b>



**INSTALLATION NOTES:**

- FOUNDATION WITH ANCHOR BOLTS, REBAR & CONCRETE (FORMS & PUMP FORMS) HANGING BOLT CONNECTIONS, GRANT INSTALLATION MATCH PLATE/GRANITE CONNECTIONS, ANY WELDED CONNECTIONS, ELECTRICAL WIRING AND OVERHEAD ELECTRICAL.
- LANDSCAPING MATERIALS SHOULD BE KEPT MINIMUM TWO INCHES AWAY FROM SIGN POLES OR BASE PLATES.
- THIS DRAWING IS FOR INSTALLATION PURPOSES ONLY AND NOT TO BE USED FOR MANUFACTURING.

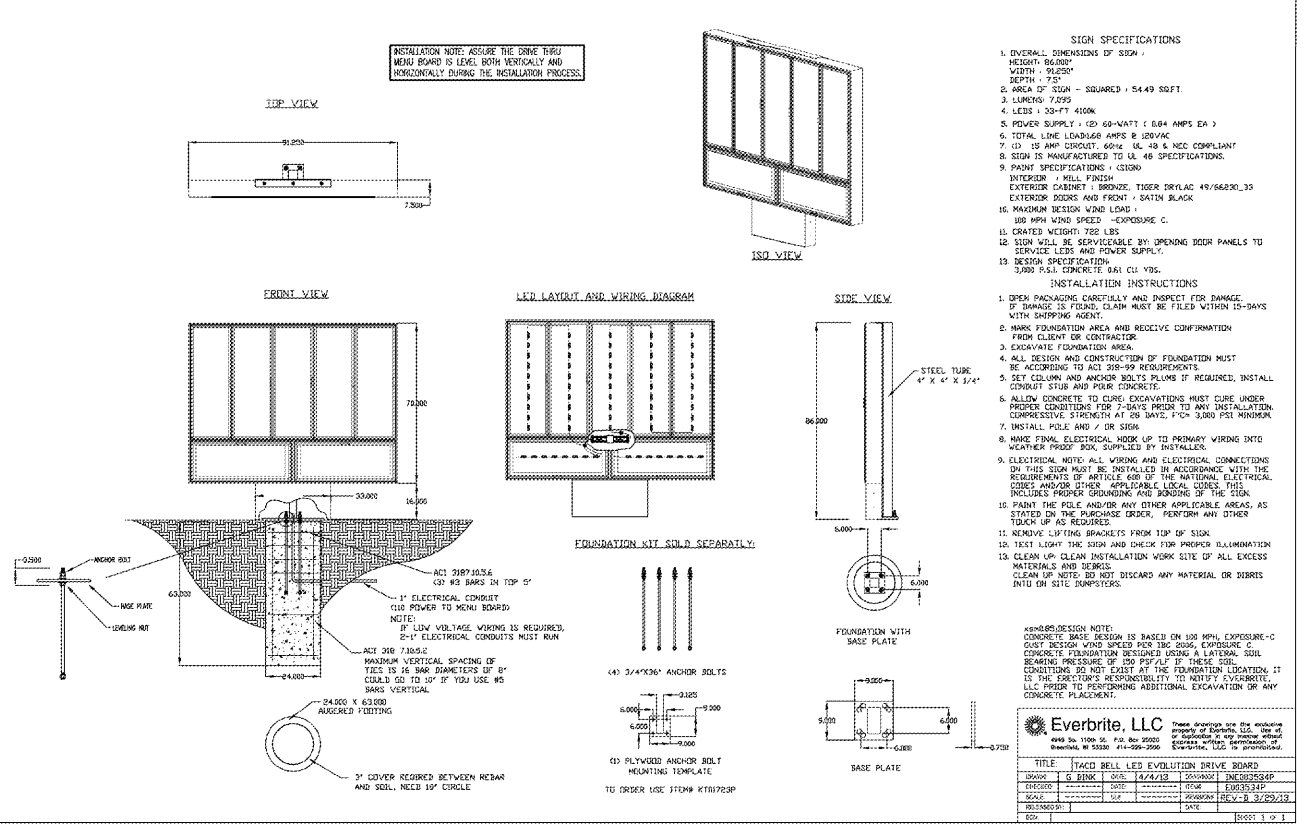
**CONCRETE SPECIFICATIONS:**

CONCRETE SHALL HAVE A MIN. COMPRESSIVE STRENGTH OF 3,000 PSI @ 28 DAYS. REINFORCING STEEL SHALL HAVE A MIN. YIELD STRENGTH OF 60,000 PSI. RECOMMENDED MIN. CURE TIME OF 7 DAYS BEFORE PROCEEDING WITH INSTALLATION.

**ANCHOR BOLT PATTERN:**

ANCHOR BOLTS SHALL BE 1/2\"/>

<p>Everbite 1100 S. 11th St. Suite 200 Greenfield, WI 53220 414-229-7191</p>	<b>INSTALLATION DRAWING</b> THESE DRAWINGS ARE THE EXCLUSIVE PROPERTY OF EVERBITE, LLC. USE OF OR REPRODUCTION IN ANY MANNER WITHOUT EXPRESS WRITTEN PERMISSION OF EVERBITE, LLC IS PROHIBITED.		DRAWN BY: <b>SAJ</b> DATE: <b>8-17-16</b>	SITE: <b>STANDARD DRAWING</b>	TITLE: <b>TACO BELL 10'-0\"/&gt; </b>
	PROJECT NO: <b>350106</b> DRAWING NO: <b>IN350106P</b>	SCALE: <b>AS SHOWN</b>	REV: <b>A</b>	DATE: <b>8-17-16</b>	CHECKED BY: <b>RHB</b>



**INSTALLATION NOTES:**

- FOUNDATION WITH ANCHOR BOLTS, REBAR & CONCRETE (FORMS & PUMP FORMS) HANGING BOLT CONNECTIONS, GRANT INSTALLATION MATCH PLATE/GRANITE CONNECTIONS, ANY WELDED CONNECTIONS, ELECTRICAL WIRING AND OVERHEAD ELECTRICAL.
- LANDSCAPING MATERIALS SHOULD BE KEPT MINIMUM TWO INCHES AWAY FROM SIGN POLES OR BASE PLATES.
- THIS DRAWING IS FOR INSTALLATION PURPOSES ONLY AND NOT TO BE USED FOR MANUFACTURING.

**CONCRETE SPECIFICATIONS:**

CONCRETE SHALL HAVE A MIN. COMPRESSIVE STRENGTH OF 3,000 PSI @ 28 DAYS. REINFORCING STEEL SHALL HAVE A MIN. YIELD STRENGTH OF 60,000 PSI. RECOMMENDED MIN. CURE TIME OF 7 DAYS BEFORE PROCEEDING WITH INSTALLATION.

**ANCHOR BOLT PATTERN:**

ANCHOR BOLTS SHALL BE 1/2\"/>

<p>Everbite LLC 1100 S. 11th St. Suite 200 Greenfield, WI 53220 Phone: 414-229-7191 • Fax: 414-229-7191 Website: www.everbite.com</p>	Part No: <b>606356P</b> Description: <b>Drive Thru Evolucon LED V Manufacturer</b> Website: <b>www.everbite.com</b>	Project No: <b>296136</b> Date: <b>01/17/13</b> Drawn By: <b>RB</b>	
	TITLE: <b>TACO BELL LED SIGN HEATING DRIVE BOARD</b> PROJECT NO: <b>350106</b> DRAWING NO: <b>IN350106P</b>	SCALE: <b>AS SHOWN</b>	REV: <b>A</b>

REVISION BLOCK

Michael Thompson

DATE: 06/01/2018

DRAWN BY: MSO CHECKED BY: MAT

**HAMILTON DESIGNS**  
A LIMITED LIABILITY COMPANY

11988 Fishers Crossing Drive, Suite 154  
Fishers, Indiana 46038  
P: (317) 570-6800  
www.hamilton-designs.com

CONSTRUCTION PLANS FOR:

**TACO BELL | BISCOE, NC**  
101 Montgomery Crossing (Highway 24)  
Biscoe, North Carolina, 27209

**BELL AMERICAN GROUP, LLC**  
8930 Bash Street, Suite L  
Indianapolis, Indiana 46256

PROJECT NO: 2016-235

DATE: 06/01/2018

SCALE:

SHEET NAME: **SITE DETAILS**

SHEET NO.: **CS-505**