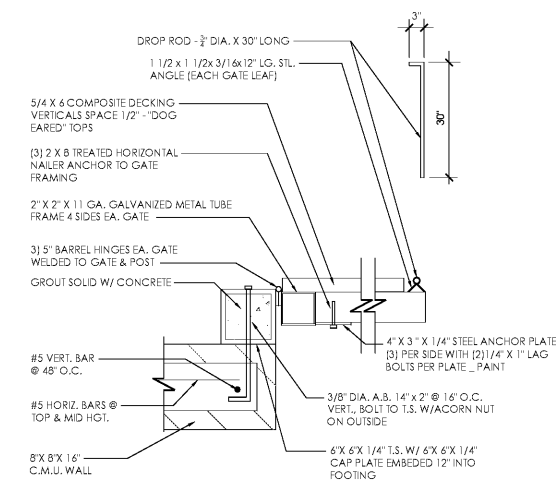


1. CONTRACTOR TO PROVIDE BOLLARD COVERS FOR ALL BOLLARDS ON-SITE. STREET SMART; YELLOW OR APPROVED EQUAL.

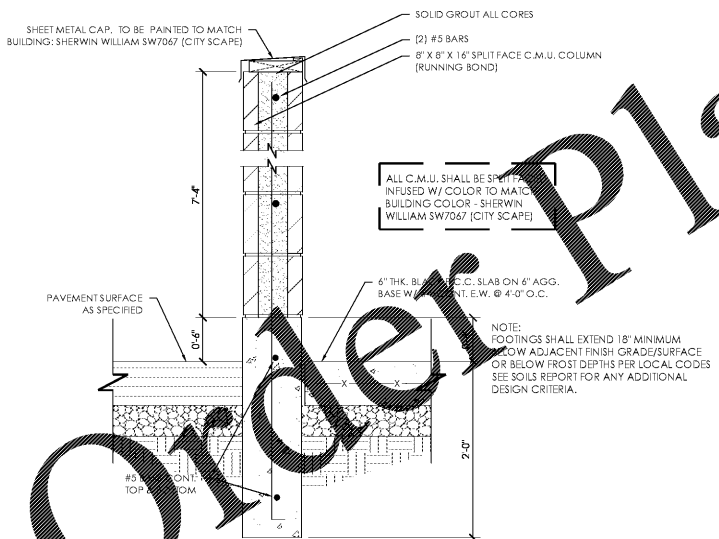
8. BOLLARD

NOT TO SCALE, MODIFIED YUMI STANDARD DETAIL



7. JAMB DETAIL

NOT TO SCALE, MODIFIED YUMI STANDARD DETAIL

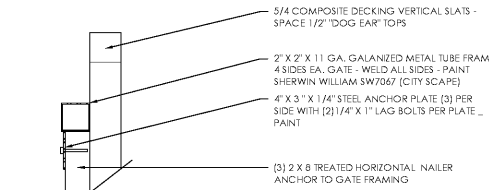


5. SECTIONS

NOT TO SCALE, MODIFIED YUMI STANDARD DETAIL

GATE NOTES:
 (2) EQUAL (16'-0") WIDE X 6'-0" HIGH GATES, GALVANIZED TUBE STEEL FRAME WITH (3) 2 X 8 TREATED WOOD HORIZONTAL NAILERS EQUAL SPACED ANCHORED TO TUBE FRAMING AND 5/4 X 6 VERTICAL SLATS SPACED 1/2" DOG EARED TOP W/ 1/4" X 1" BAR CROSS BRACING WELD AND GRIND SMOOTH. ALL CONNECTIONS, TYP. PRIME AND PAINT COLOR TO MATCH BUILDING.

GATE HARDWARE:
 1. ALL HARDWARE AND ACCESSORIES SHALL BE HEAVY GALVANIZED.
 2. GATE STOP - MUSHROOM TYPE OR FLUSH PLATE WITH ANCHORS SET IN CONCRETE TO ENGAGE THE CENTER DROP ROD OR PLUNGER BAR.



CONTRACTOR TO REMOVE BOTTOM ROW BLOCK AND ALLOW POSITIVE DRAINAGE THROUGH TRASH ENCLOSURE, COORDINATE WITH GRADING PLAN CG-101 FOR EXACT LOCATION

NOTES:
 1. LOCATION SHALL BE APPROVED BY THE TOWN OF BISCOE.
 2. AREAS SHALL BE ACCESSIBLE FOR DELIVERY AND COLLECTION.
 3. GATES SHALL BE AS SHOWN AND MUST BE APPROVED BY THE TOWN OF BISCOE PRIOR TO INSTALLATION.
 4. GATE LATCHES SHALL BE OF THE PLUNGER BAR TYPE OR EQUIVALENT AS APPROVED BY THE TOWN OF BISCOE.
 5. SEE ATTACHED SPECIFICATIONS, NOTES AND PROCEDURES.

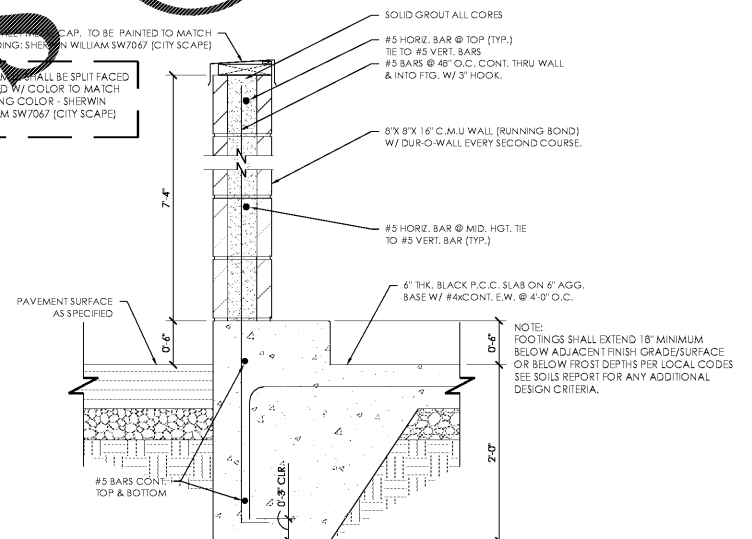
TRASH ENCLOSURE DETAIL MATERIAL SPECIFICATIONS:
 1. CONCRETE BLOCK: 6" MINIMUM IN SIZE, ASTM C90.
 2. REINFORCING STEEL: ASTM A615, GRADE 40.
 3. ACCEPTABLE SOIL TYPES:
 A. MIN. ALLOWABLE BEARING: 1000 LBS/SQ. FT.
 B. MIN. LATERAL BEARING: 100 LBS/SQ. FT./FT.
 C. MAX EXPANSION INDEX: 20
 4. CONCRETE: BLACK, 4000 LBS/SQ. IN. IN 28 DAYS.
 5. MORTAR: 1:1/2:3 (PORTLAND CEMENT: HYDRATED LIME OR LIME PUTTY: SAND BY VOLUME), MIXED TO PLASTIC CONSISTENCY. REFER TO UBC TABLE 2A.4 FOR OTHER TYPES OF CEMENT.
 6. GROUT: 1:1/2:3 (PORTLAND CEMENT: HYDRATED LIME OR LIME PUTTY: SAND BY VOLUME), MIX TO FLOW WITHOUT SEGREGATION. GROUT MAY CONTAIN 2 PARTS PEA GRAVEL (3/8" MAX. SIZE).
 7. METAL TUBE FRAME: 2" X 2" X 11 GA. GALVANIZED METAL TUBE FRAME WITH HORIZONTAL MEMBER AT CENTER OF GATE. 1/4" X 1" FLAT CROSS BRACING WELD TO FRAME.
 8. TREATED WOOD NAILERS: ANCHOR TO FRAME WITH METAL ANCHOR PLATES.
 9. COMPOSITE DECKING: 5/4 X 6 COMPOSITE DECKING "DOG EAR" TOPS, SPACE 1/2". DESIGN REFERENCE: TIMBERTECH COMPOSITE DECKING. WARRANTY - 25 YEAR AGAINST ROT, DECAY, SPLITTING, CHECKING, SPLINTERING OR TERMITE DAMAGE. COLOR - STONE ASH

GENERAL NOTES:
 1. THIS DESIGN IS FOR AVERAGE CONDITIONS AND MAY NOT BE SUITABLE FOR ALL CASES. IT IS RECOMMENDED THAT A LICENSED CIVIL OR STRUCTURAL ENGINEER BE CONSULTED.
 2. FOOTINGS SHALL BE IN NATURAL SOIL OR CERTIFIED FILL.
 3. BLOCKS TO BE STAGGERED (RUNNING BOND).
 4. ALL CELLS CONTAINING REINFORCING STEEL SHALL BE GROUTED.
 5. APPROVED GROUT STOPS ARE REQUIRED BELOW HORIZONTAL STEEL IN PARTIALLY GROUTED WALLS. BARS, NEWSPAPERS, ETC. ARE NOT APPROVED GROUT STOPS.
 6. INITIAL BED JOINT SHALL BE 1/4" MIN. 1" MAX. SUBSEQUENT BED JOINTS SHALL BE 1/4" MIN. 1" MAX.
 7. VERTICAL CONTINUITY OF CELLS SHALL BE UNOBSTRUCTED. MORTAR PROJECTIONS SHALL NOT EXCEED 1/8" FOR 6" AND LARGER BLOCKS. MORTAR PROJECTIONS ON OTHER FOREIGN MATTER ARE NOT PERMITTED IN CELLS. IT SHALL BE REMOVED.
 8. EXPANSION JOINTS REQUIRED AT 60'-0" MAX. INTERVALS.
 9. REQUIRED BAR LAPS:
 A. VERTICAL STEEL: 30 BAR DIAMETERS.
 B. HORIZONTAL STEEL: 40 BAR DIAMETERS.
 C. WIRE JOINT REINFORCEMENT IN THE MORTARED BED JOINT: WIRE DIAMETER SHALL BE 1/4" MIN. 1/2" MAX. BOND: 34 DIAMETERS PLUS TWICE THE BED JOINT SPACING.
 10. WHERE HORIZONTAL WIRE JOINT REINFORCEMENT IS REQUIRED OR UTILIZED, IT SHALL BE EQUIVALENT TO TWO 3/16" DIAMETER BARS CONNECTED AT 16" INTERVALS BY WELDING OR WELDED WIRE.
 11. FOR PIPES AND CONDUIT EMBEDDED IN MASONRY REFER TO SECTION 24-07(g), UBC.
 12. 2" MIN. COVER REQUIRED FOR ALL REINFORCING STEEL. CONCRETE SHALL BE CAST AGAINST EARTH.
 13. ALL FINISHED SURFACES TO MATCH BUILDING COLOR (CITY SCAPE)

INSPECTION PROCEDURES:
 1. FOUNDATION BRIDGES ARE TO BE IN PLACE BEFORE ANY CONCRETE IS POURED.
 2. PREGROUT: AFTER ALL BLOCKS (EXCEPT CAP) IN PLACE, VERTICAL AND HORIZONTAL STEEL IS IN PLACE, GROUT STOPS (FOR PARTIALLY GROUTED MASONRY) ARE IN PLACE PRIOR TO GROUTING.
 3. ALL REINFORCING STEEL IS IN PLACE AND PRIOR TO THE START OF CAP.

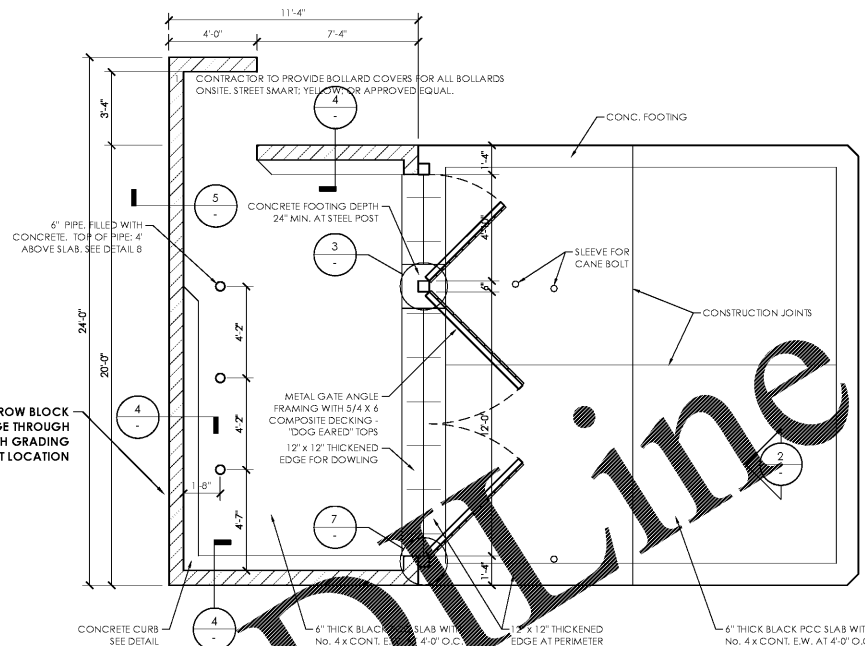
GATE DETAILS

NOT TO SCALE, MODIFIED YUMI STANDARD DETAIL



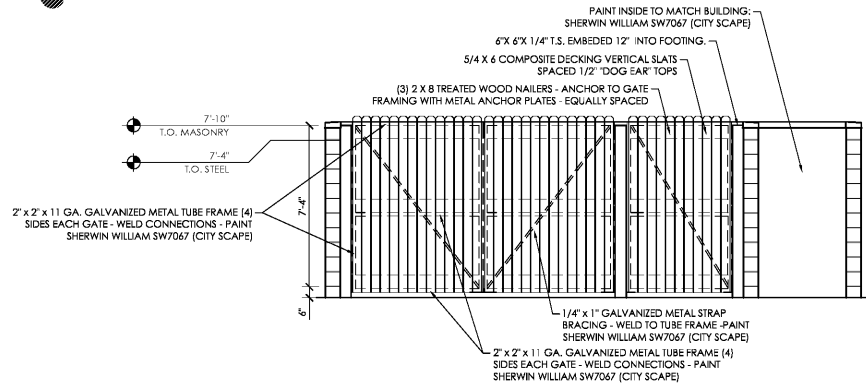
4. SECTIONS

NOT TO SCALE, MODIFIED YUMI STANDARD DETAIL



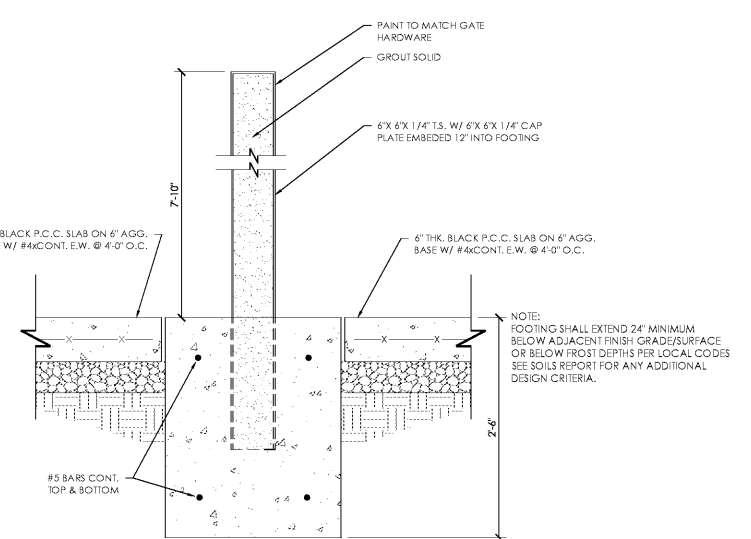
1. PLAN VIEW

NOT TO SCALE, MODIFIED YUMI STANDARD DETAIL



2. ELEVATION

NOT TO SCALE, MODIFIED YUMI STANDARD DETAIL



3. SECTIONS

NOT TO SCALE, MODIFIED YUMI STANDARD DETAIL

www.LDOnline.com



Michael Thompson

DATE: 06/01/2018
 DRAWN BY: MSO
 CHECKED BY: MAT

HAMILTON DESIGNS
 A LIMITED LIABILITY COMPANY

11988 Fishers Crossing Drive, Suite 154
 Fishers, Indiana 46038
 P: (317) 578-8800
 www.hamilton-designs.com

CONSTRUCTION PLANS FOR:
TACO BELL | BISCOE, NC
 101 Montgomery Crossing (Highway 24)
 Biscoe, North Carolina, 27209

BELL AMERICAN GROUP, LLC
 8930 Bash Street, Suite L
 Indianapolis, Indiana 46256

PROJECT NO.: 2016-235
 DATE: 06/01/2018
 SCALE:

SHEET NAME:
SITE DETAILS
 SHEET NO.:

CS-503