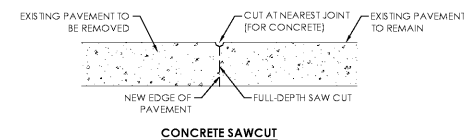
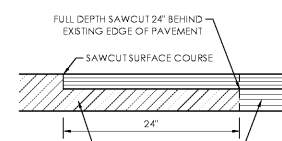


CURB JOINT DETAILS

NOT TO SCALE



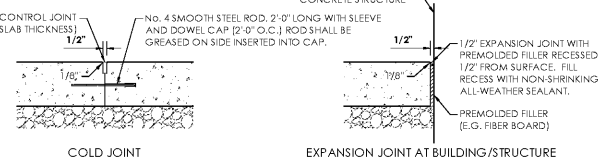
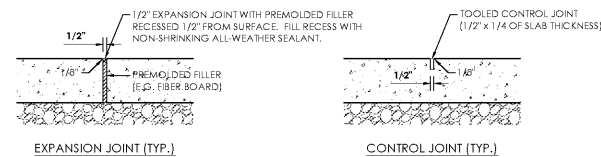
CONCRETE SAWCUT



ASPHALT SAWCUT AND LAP JOINT

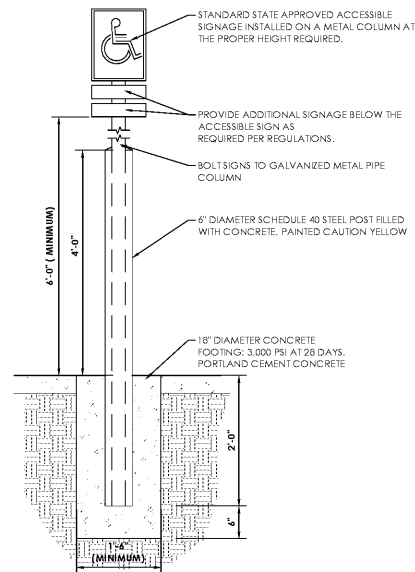
SAWCUT / LAP JOINT DETAIL

NOT TO SCALE



CONCRETE PAVING JOINT DETAILS

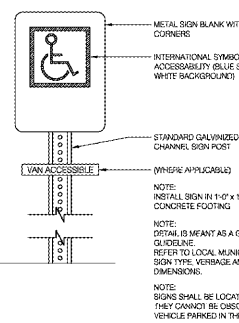
NOT TO SCALE



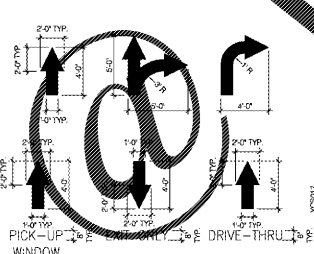
ACCESSIBLE PARKING SIGNAGE

NOT TO SCALE, YUMI STANDARD DETAIL YCS018

AMERICANS WITH DISABILITIES ACT (ADA) PARKING SIGN



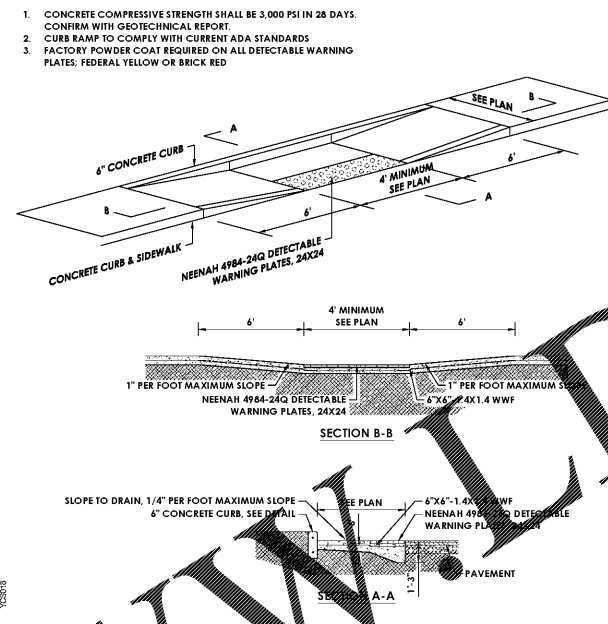
PAVEMENT MARKINGS



ALL PAVEMENT MARKINGS TO BE WHITE PAVEMENT PAINT, UNLESS STATED OTHERWISE.

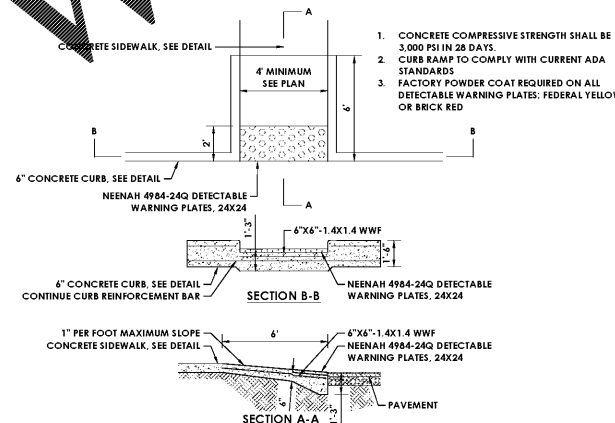
ACCESSIBLE PARKING SIGNAGE

NOT TO SCALE, YUMI STANDARD DETAIL YCS017



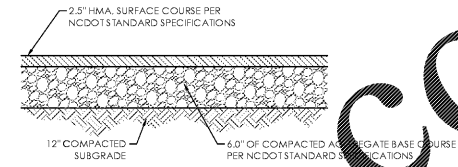
PARALLEL CURB RAMP

NOT TO SCALE



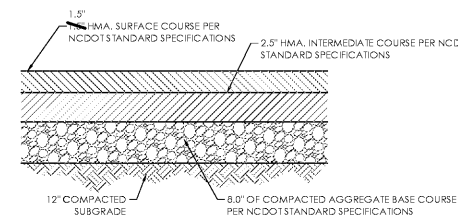
PERPENDICULAR CURB RAMP

NOT TO SCALE



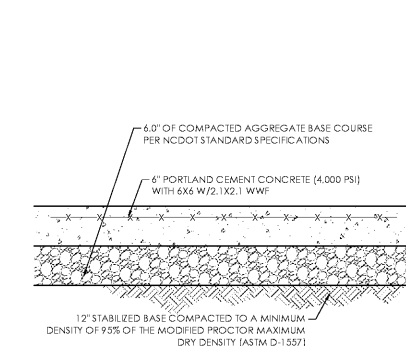
STANDARD DUTY ASPHALT PAVEMENT

NOT TO SCALE



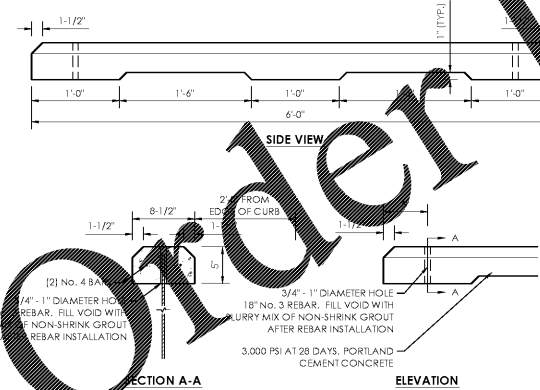
HEAVY DUTY ASPHALT PAVEMENT

NOT TO SCALE



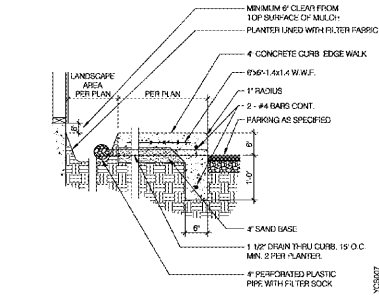
BLACK CONCRETE PAVEMENT

NOT TO SCALE



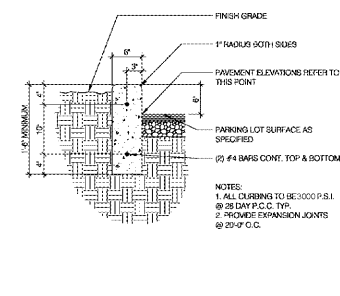
PRECAST CONCRETE WHEELSTOP

NOT TO SCALE



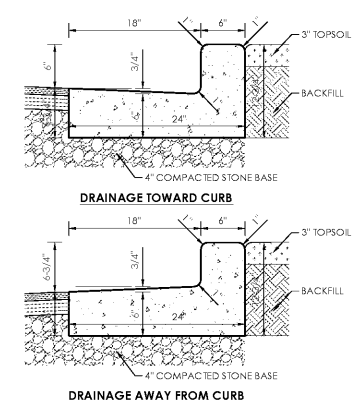
CONCRETE CURB AND WALK

NOT TO SCALE, YUMI STANDARD DETAIL YCS007



6" CONCRETE CURB

NOT TO SCALE, YUMI STANDARD DETAIL YCS005



COMBINED CURB & GUTTER DETAIL

NOT TO SCALE

REVISION BLOCK



Michael Thompson

DATE: 06/01/2018
DRAWN BY: MSO
CHECKED BY: MAT

HAMILTON DESIGNS

A LIMITED LIABILITY COMPANY

11988 Fishers Crossing Drive, Suite 154
Fishers, Indiana 46038
P. (317) 570-8800
www.hamilton-designs.com

CONSTRUCTION PLANS FOR:
TACO BELL | BISCOE, NC
101 Montgomery Crossing (Highway 24)
Biscoe, North Carolina, 27209

BELL AMERICAN GROUP, LLC
8930 Bash Street, Suite L
Indianapolis, Indiana 46256

PROJECT NO.
2016-235

DATE
06/01/2018

SCALE

SHEET NAME
SITE DETAILS

SHEET NO.

CS-501