

EX:2018.02.25 - bell american group - biscoe, nc drawings\cs-101.dwg

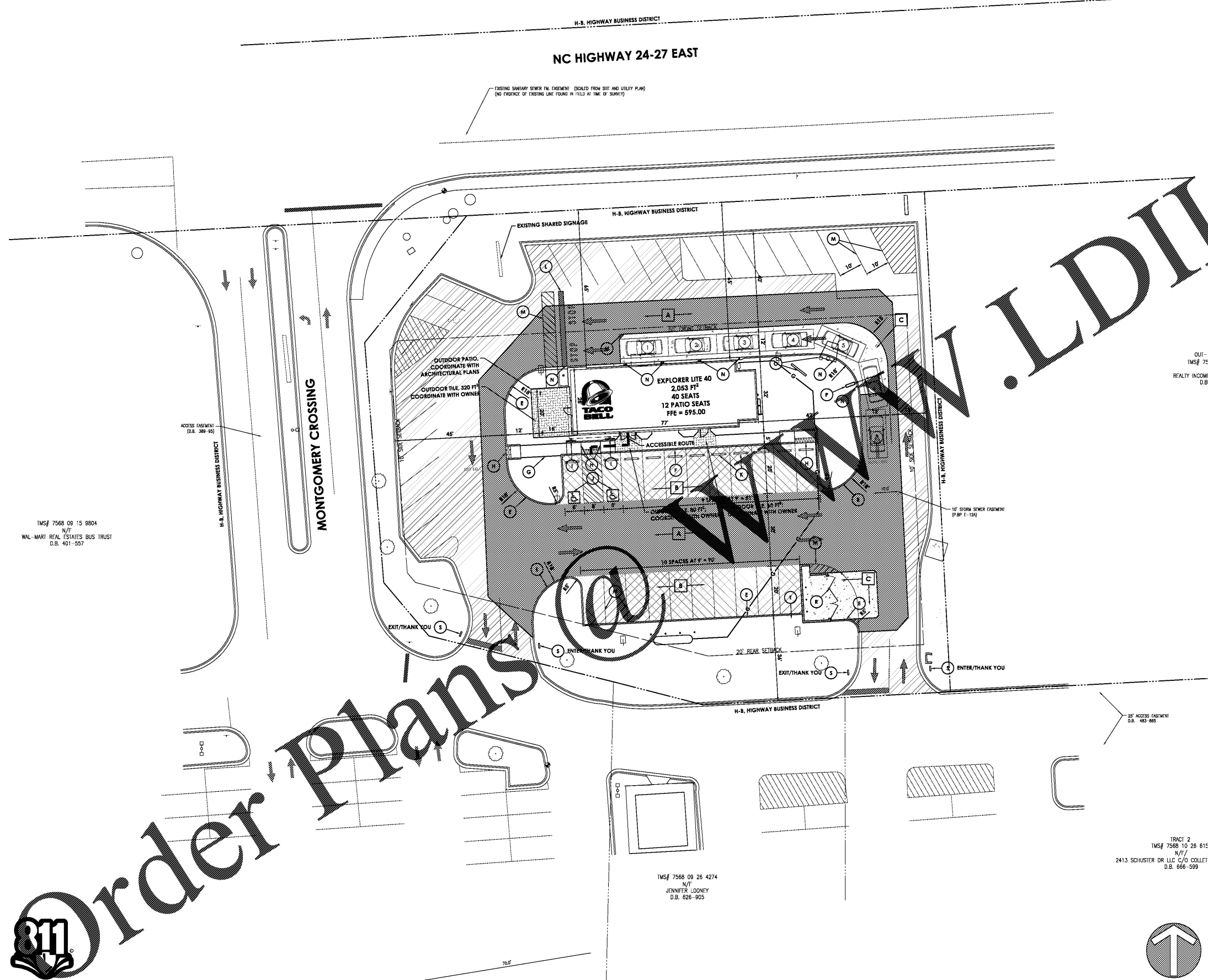
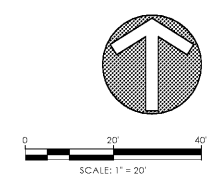


Know what's below.
Call before you dig.

TMS# 7568 09 15 9804
N/F
WAL-MART REAL ESTATES BUS TRUST
D.B. 401-557

TMS# 7566 09 26 4274
N/F
JENNIFER LOONEY
D.B. 626-905

TRACT 2
TMS# 7568 10 26 616
N/F/
2413 SCHUSTER DR LLC C/O COLLET
D.B. 666-599



LEGEND OF EXISTING FEATURES

---	PROPERTY LINE	+	BENCHMARK
---	RIGHT-OF-WAY LINE	o	MONUMENT
---	SETBACK LINE	△	SECTION CORNER
---	EASEMENT	⊠	TRANSFORMER
---	SECTION LINE	⊠	HVAC
---	CENTERLINE	⊠	ELECTRIC METER
---	799	⊠	ELECTRIC MANHOLE
---	800	⊠	POWER POLE GUY WIRE
---	INDEX CONTOUR	⊠	LIGHT POLE
---	TELEPHONE UNDER GR.	⊠	PARKING LOT LIGHTS
---	TELEPHONE OVERHEAD	⊠	PEDESTAL TELEPHONE MANHOLE
---	FIBER OPTIC SERVICE	⊠	FIBER OPTIC MANHOLE
---	GAS SERVICE	⊠	TRAFFIC POLE MANHOLE STOP LIGHT
---	POWER UNDERGROUND	⊠	VALVE
---	WATER SERVICE	⊠	STORM MANHOLE
---	SEWAGE SERVICE	⊠	SANITARY MANHOLE
---	PERMANENT POOL	⊠	STORM INLETS
---	EX. FLOWLINE	⊠	STORM ENDSECTION
---	CHAIN LINK FENCE	⊠	CLEAN-OUT DOWNSPOUT
---	FARM FENCE	⊠	FIRE HYDRANTS
---	WOOD FENCE	⊠	FIRE VALVE
---	IRON FENCE RAILING	⊠	WATER METER
---	BUILDING STRUCTURE	⊠	WATER VALVES
---	EX. BUILDING OVERHEAD	⊠	POST INDICATOR VALVE
---	RM	⊠	FIRE DEPARTMENT CONN.
---	INV.	⊠	SIGNS
---	FFE	⊠	MAILBOX
		⊠	ADA PARKING
		⊠	PARKING COUNT
		⊠	TREES
		⊠	SHRUB
		⊠	SPOT GRADE

SITE PLAN LEGEND - PROPOSED

⊠	HEAVY DUTY ASPHALT PAVEMENT	CS-501
⊠	LIGHT DUTY ASPHALT PAVEMENT	CS-501
⊠	BLACK CONCRETE PAVEMENT	CS-501
⊠	ASPHALT OVERLAY	CS-502
⊠	6" CONCRETE CURB	CS-501
⊠	CONCRETE CURB AND WALK	CS-501
⊠	CONCRETE SIDEWALK	CS-502
⊠	ACCESSIBLE CURB RAMP	CS-501
⊠	ACCESSIBLE PARKING SIGNAGE	CS-501
⊠	ACCESSIBLE PARKING PAVEMENT MARKINGS	CS-501
⊠	PRECAST CONCRETE WHEELS TOP	CS-501
⊠	PAVEMENT STRIPING, 24" STOP BAR	CS-501
⊠	PAVEMENT STRIPING, 4" SOLID	CS-501
⊠	BOLLARD	CS-502
⊠	MENU BOARD, ORDER CONFIRMATION, AND CANOPY	CS-504 CS-505
⊠	CLEARANCE BAR	CS-504 CS-505
⊠	LIGHT POLE	CS-504
⊠	DUMPSTER ENCLOSURE	CS-503
⊠	DIRECTIONAL SIGNAGE	CS-502
⊠	CURB TURNOUT	CS-502
⊠	PYLON SIGNAGE	CS-500
---	ACCESSIBLE ROUTE	

SITE INFORMATION

PARCEL NUMBER:	7568-09-26-4470
ZONING DISTRICT:	H-8, HIGHWAY BUSINESS DISTRICT
LOT AREA:	0.51 ACRES
DISTURBED AREA:	2,053 F ²
ADJOINER ZONING:	H-8, HIGHWAY BUSINESS DISTRICT NORTH SOUTH EAST WEST
PROPOSED USE:	NEW QUICK-SERVE RESTAURANT (TACO BELL)
BUILDING SETBACKS:	FRONT 50' REQUIRED 10' PAVEMENT SIDE 10' REQUIRED 5' PAVEMENT REAR 20' REQUIRED 5' PAVEMENT
REAR PARKING DATA:	REQUIRED SPACES 20 SPACES (1) SPACE FOR EVERY (4) SEATS + (1) SPACES FOR EVERY (1) EMPLOYEES 43 SPACES PROVIDED SPACES

REVISION BLOCK



Michael Thompson
DATE: 06/01/2018
DRAWN BY: KRE
CHECKED BY: MAT

HAMILTON DESIGNS
A LIMITED LIABILITY COMPANY

11988 Fishers Crossing Drive, Suite 154
Fishers, Indiana 46038
P: (317) 570-8800
www.hamilton-designs.com

CONSTRUCTION PLANS FOR:
TACO BELL | BISCOE, NC
101 Montgomery Crossing (Highway 24)
Biscoe, North Carolina, 27209

BELL AMERICAN GROUP, LLC
8930 Bash Street, Suite L
Indianapolis, Indiana 46256

PROJECT NO.	2016-235
DATE	06/01/2018
SCALE	1" = 20'
SHEET NAME	SITE PLAN
SHEET NO.	CS-101