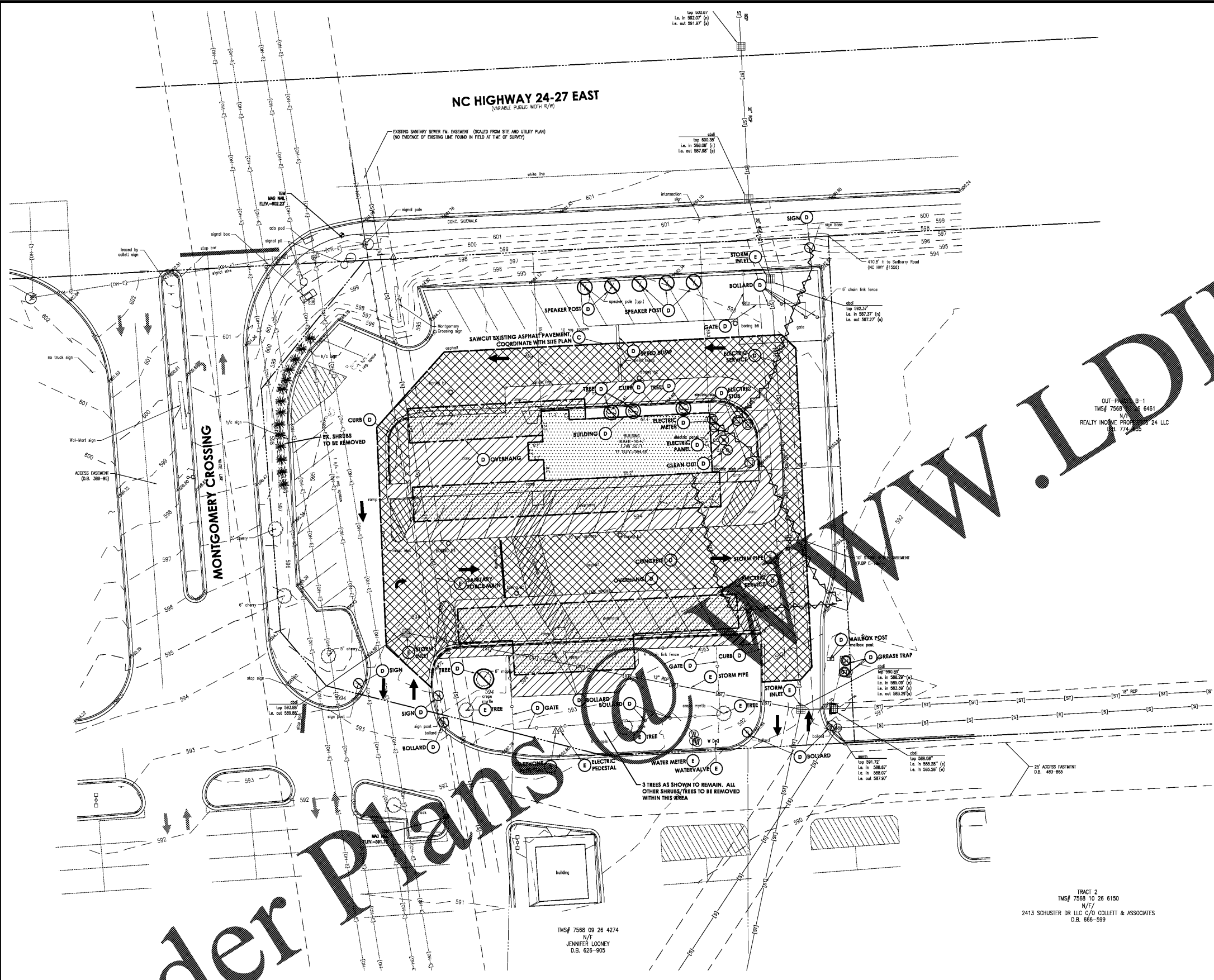


EX:2016-235 - bell american group - biscoe, nc drawings\cd-101.dwg



Know what's below.
Call before you dig.



LEGEND OF EXISTING FEATURES

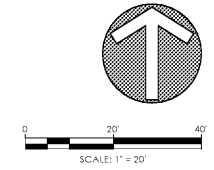
---	PROPERTY LINE	+	BENCHMARK
---	RIGHT-OF-WAY LINE	o	MONUMENT
---	SETBACK LINE	△	SECTION CORNER
---	EASEMENT	□	TRANSFORMER
---	SECTION LINE	⊕	HVAC
---	CENTERLINE	⊕	ELECTRIC METER
---	799	⊕	ELECTRIC MANHOLE
---	800	⊕	POWER POLE GUY WIRE
---	INDEX CONTOUR	⊕	LIGHT POLE
---	TELEPHONE UNDER GR.	⊕	PARKING LOT LIGHTS
---	TELEPHONE OVERHEAD	⊕	PEDESTAL
---	FIBER OPTIC SERVICE	⊕	ELECTRIC MANHOLE
---	GAS SERVICE	⊕	FIBER OPTIC
---	POWER UNDERGROUND	⊕	TRAFFIC POLE
---	WATER SERVICE	⊕	MANHOLE STOP LIGHT
---	WATER OVERHEAD	⊕	VALVE
---	SANITARY	⊕	STORM MANHOLE
---	FORM SEWER	⊕	SANITARY MANHOLE
---	PERMANENT POOL	⊕	STORM INLETS
---	EX. FLOWLINE	⊕	STORM ENDSECTION
---	CHAIN LINK FENCE	⊕	CLEAN-OUT
---	FARM FENCE	⊕	DOWNSPOUT
---	WOOD FENCE	⊕	FIRE HYDRANT
---	IRON FENCE RAILING	⊕	FIRE VALVE
---	BUILDING STRUCTURE	⊕	WATER METER
---	EX. BUILDING OVERHEAD	⊕	WATER VALVES
---	RM	⊕	POST INDICATOR VALVE
---	INV.	⊕	FIRE DEPARTMENT CONN.
---	FFE	⊕	SIGNS
---		⊕	MAILBOX
---		⊕	ADA PARKING
---		⊕	PARKING COUNT
---		⊕	TREES
---		⊕	SHRUB
---		⊕	SPOT GRADE

DEMOLITION LEGEND

▨	ASPHALT TO BE REMOVED
▧	CONCRETE TO BE REMOVED
▩	BUILDING STRUCTURE TO BE REMOVED
▪	TREES, SHRUBS, AND GROUND COVER TO BE REMOVED
⊕	ABANDON IN PLACE
⊕	SAWCUT, CLEAN EDGE
⊕	DEMOLISH OR REMOVE
⊕	EXISTING TO REMAIN
⊕	RELOCATE
---	CURB TO BE REMOVED
---	BUILDING OR STRUCTURE TO BE REMOVED
---	SAWCUT, CLEAN EDGE
---	UTILITY TO BE REMOVED
---	PROJECT LIMITS
⊕	CONSTRUCTION BARRELS

TRACT 2
IMS# 7568 10 26 6150
N/T
2413 SCHUSTER DR LLC C/O COLLETT & ASSOCIATES
D.B. 696-599

IMS# 7568 09 26 4274
N/T
JENNIFER LOONEY
D.B. 626-906



REVISION BLOCK



Michael Thompson
DATE: 06/01/2018
DRAWN BY: KRE
CHECKED BY: MAT

HAMILTON
DESIGNS
A LIMITED LIABILITY COMPANY

11988 Fishers Crossing Drive, Suite 154
Fishers, Indiana 46038
P. (317) 570-8800
www.hamilton-designs.com

CONSTRUCTION PLANS FOR:
TACO BELL | BISCOE, NC
101 Montgomery Crossing (Highway 24)
Biscoe, North Carolina, 27209

BELL AMERICAN GROUP, LLC
8930 Bash Street, Suite L
Indianapolis, Indiana 46256

PROJECT NO.
2016-235
DATE
06/01/2018
SCALE
1" = 20'
SHEET NAME
**DEMOLITION
PLAN**
SHEET NO.

CD-101