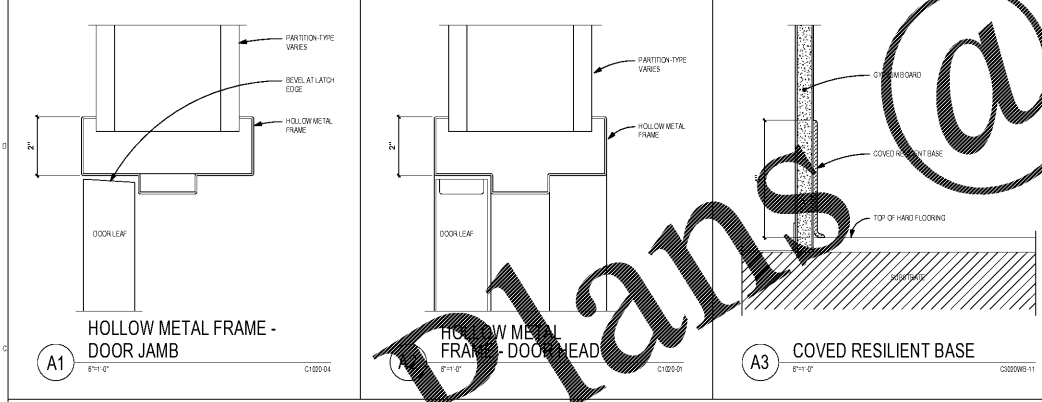
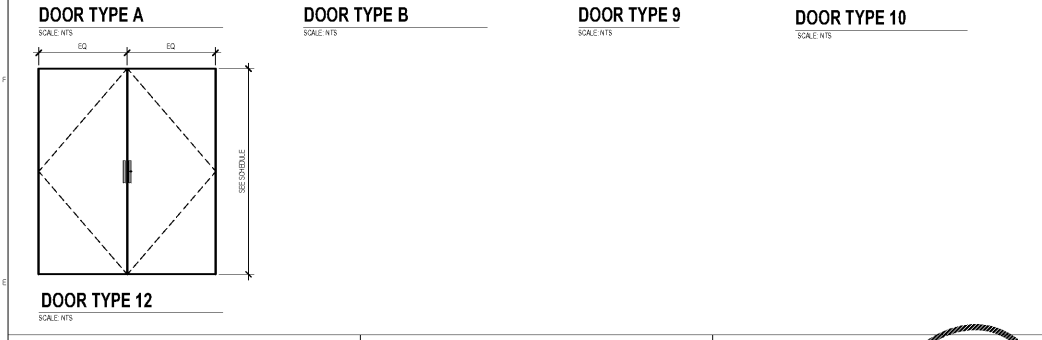
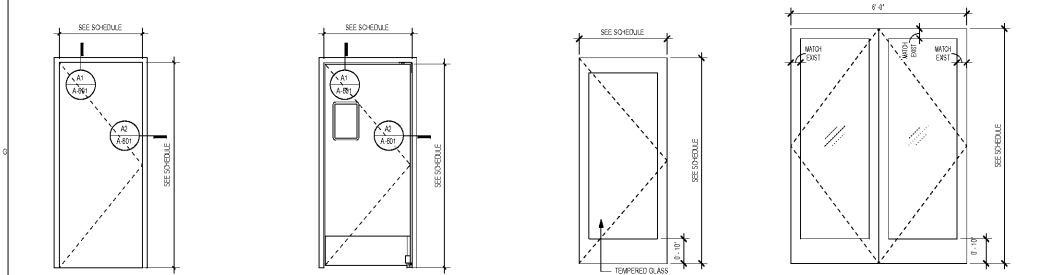


DOOR SCHEDULE

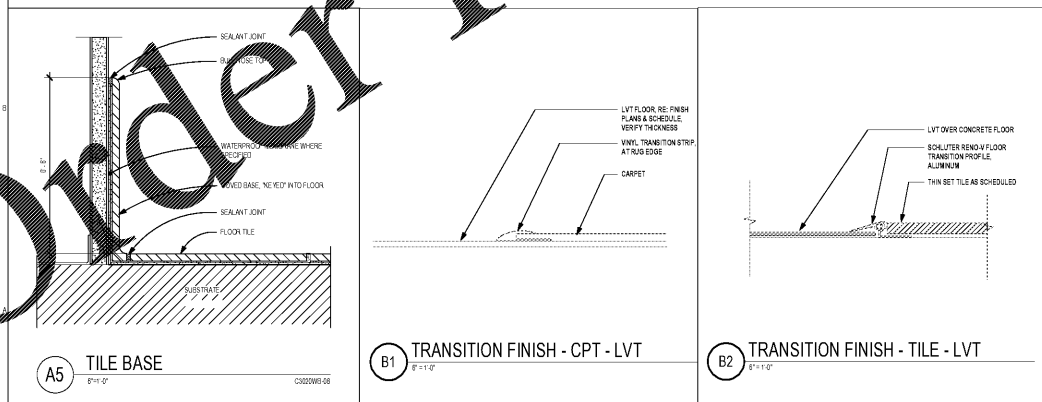
NO.	NUMBER	NAME	TYPE	DOOR SIZE	DOOR MATERIAL	DOOR FINISH	FRAME MATERIAL	FRAME FINISH	FIRE RATING	GLAZING	HARDWARE SET	NOTES
1001	01	CONCRETE	S	36" x 84"	ALUMINUM	ALUMINUM	ALUMINUM	ALUMINUM	TEMPERED	N	A	APPLY SEMI TRANSPARENT FILM ON GLAZING
1002	02	CONCRETE	A	36" x 84"	ALUMINUM	ALUMINUM	ALUMINUM	ALUMINUM	TEMPERED	N	A	KEY: GRAPHIC APPLIED OVER DOOR AND FRAME
1003	03	CONCRETE	A	36" x 84"	ALUMINUM	ALUMINUM	ALUMINUM	ALUMINUM	TEMPERED	N	A	
1004	04	CONCRETE	A	36" x 84"	ALUMINUM	ALUMINUM	ALUMINUM	ALUMINUM	TEMPERED	N	A	
1005	05	CONCRETE	A	36" x 84"	ALUMINUM	ALUMINUM	ALUMINUM	ALUMINUM	TEMPERED	N	A	
1006	06	CONCRETE	A	36" x 84"	ALUMINUM	ALUMINUM	ALUMINUM	ALUMINUM	TEMPERED	N	A	
1007	07	CONCRETE	A	36" x 84"	ALUMINUM	ALUMINUM	ALUMINUM	ALUMINUM	TEMPERED	N	A	
1008	08	CONCRETE	A	36" x 84"	ALUMINUM	ALUMINUM	ALUMINUM	ALUMINUM	TEMPERED	N	A	
1009	09	CONCRETE	A	36" x 84"	ALUMINUM	ALUMINUM	ALUMINUM	ALUMINUM	TEMPERED	N	A	
1010	10	CONCRETE	A	36" x 84"	ALUMINUM	ALUMINUM	ALUMINUM	ALUMINUM	TEMPERED	N	A	
1011	11	CONCRETE	A	36" x 84"	ALUMINUM	ALUMINUM	ALUMINUM	ALUMINUM	TEMPERED	N	A	
1012	12	CONCRETE	A	36" x 84"	ALUMINUM	ALUMINUM	ALUMINUM	ALUMINUM	TEMPERED	N	A	
1013	13	CONCRETE	A	36" x 84"	ALUMINUM	ALUMINUM	ALUMINUM	ALUMINUM	TEMPERED	N	A	
1014	14	CONCRETE	A	36" x 84"	ALUMINUM	ALUMINUM	ALUMINUM	ALUMINUM	TEMPERED	N	A	
1015	15	CONCRETE	A	36" x 84"	ALUMINUM	ALUMINUM	ALUMINUM	ALUMINUM	TEMPERED	N	A	
1016	16	CONCRETE	A	36" x 84"	ALUMINUM	ALUMINUM	ALUMINUM	ALUMINUM	TEMPERED	N	A	
1017	17	CONCRETE	A	36" x 84"	ALUMINUM	ALUMINUM	ALUMINUM	ALUMINUM	TEMPERED	N	A	
1018	18	CONCRETE	A	36" x 84"	ALUMINUM	ALUMINUM	ALUMINUM	ALUMINUM	TEMPERED	N	A	
1019	19	CONCRETE	A	36" x 84"	ALUMINUM	ALUMINUM	ALUMINUM	ALUMINUM	TEMPERED	N	A	
1020	20	CONCRETE	A	36" x 84"	ALUMINUM	ALUMINUM	ALUMINUM	ALUMINUM	TEMPERED	N	A	
1021	21	CONCRETE	A	36" x 84"	ALUMINUM	ALUMINUM	ALUMINUM	ALUMINUM	TEMPERED	N	A	
1022	22	CONCRETE	A	36" x 84"	ALUMINUM	ALUMINUM	ALUMINUM	ALUMINUM	TEMPERED	N	A	
1023	23	CONCRETE	A	36" x 84"	ALUMINUM	ALUMINUM	ALUMINUM	ALUMINUM	TEMPERED	N	A	
1024	24	CONCRETE	A	36" x 84"	ALUMINUM	ALUMINUM	ALUMINUM	ALUMINUM	TEMPERED	N	A	
1025	25	CONCRETE	A	36" x 84"	ALUMINUM	ALUMINUM	ALUMINUM	ALUMINUM	TEMPERED	N	A	

LOCK FUNCTION

CYLINDRICAL MORTISE	DESCRIPTION	CYLINDRICAL MORTISE	DESCRIPTION	CYLINDRICAL MORTISE	DESCRIPTION	CYLINDRICAL MORTISE	DESCRIPTION
F70	PASSAGE LOCK	F71	STOREROOM LOCK	F72	ENTRANCE LOCK	F73	CLASSROOM LOCK
F71	BOTH LEVERS ALWAYS UNLOCKED	F72	OUTSIDE LEVER IS FIXED	F73	TURN / PUSH BUTTON / LOCKING / PUSHING AND TURNING THE BUTTON / LOCK THE OUTSIDE LEVER. REGRADING USE OF A KEY UNTIL THE BUTTON IS MANUALLY UNLOCKED	F74	OUTSIDE LEVER UNLOCKED BY KEY
F72	TURN NEEDLE LEVER OR CLOSE DOOR TO RELEASE BUTTON	F73	OUTSIDE LEVER ALWAYS FIXED	F74	PUSHBUTTON LOCKING / PUSHING AND TURNING THE OUTSIDE LEVER UNLOCKED BY KEY OR BY TURNING THE NEEDLE LEVER	F75	INSIDE LEVER ALWAYS UNLOCKED
F73	PUSHBUTTON LOCKING / PUSHBUTTON LOCKS OUTSIDE LEVER UNTIL IT IS UNLOCKED BY KEY OR BY TURNING NEEDLE LEVER	F74	STONE LOCK	F75	KEY WITH OTHER LEVERS OR UNLOCKS BOTH LEVERS		



NOTE: ALL PAINTED CEILINGS TO BE PAINTED WITH WATERBORNE ACRYLIC DRYFALL PAINT

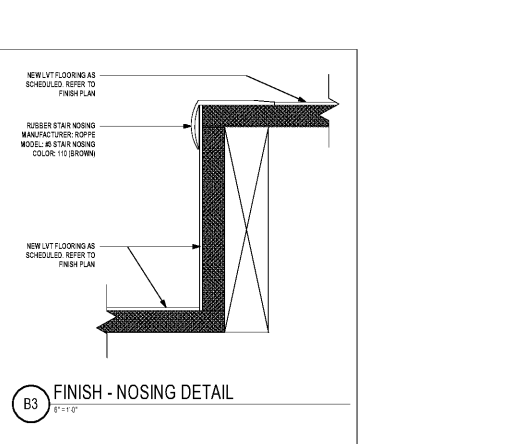
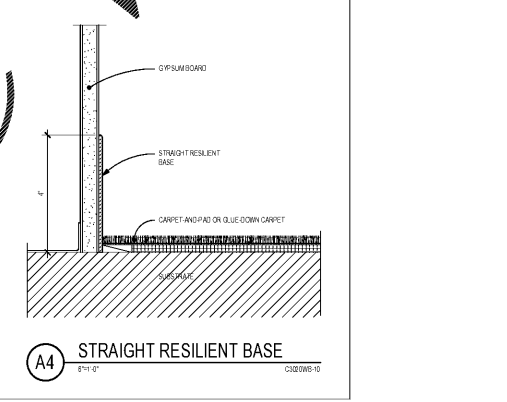
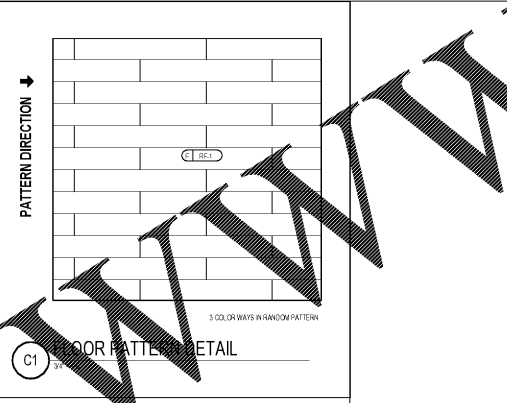


DOOR HARDWARE SCHEDULE

LOCKSET	DESCRIPTION	LOCKSET	DESCRIPTION
LOCKSET A	STORE ROOM	LOCKSET G	STOREROOM FUNCTION
LOCKSET B	OFFICE FUNCTION	LOCKSET N	ENTRANCE FUNCTION
LOCKSET C	KITCHEN		

DOOR HARDWARE KEY NOTES

- CONTRACTOR TO SUBMIT PRODUCT DATA OF ALL HARDWARE TO ARCHITECT PRIOR TO ORDER.
- ALL LOCKS TO BE MASTER KEYED AND GRAND MASTER KEYS AS PER BUILDING AND TENANT SPECIFICATIONS. VERIFY AND COORDINATE AS REQUIRED. PROVIDE (1) MASTER, (2) GRAND MASTER KEYS AND (3) KEYS PER DOOR.
- ALL HARDWARE TO BE INSTALLED ACCORDING TO THE STANDARDS OF THE SPECIFIED MANUFACTURER'S USE.
- ALL DOORS AND ASSEMBLIES DESIGNATED TO BE FIRE RATED SHALL BE LABELED AS SUCH AS REQUIRED BY CODE.
- THE FINISH HARDWARE SUPPLIER SHALL EXAMINE THE DRAWINGS, SCHEDULE AND SPECIFICATIONS AND FURNISH PROPER HARDWARE FOR ALL OPENINGS WHEN LISTED OR NOT. COMPLETE SHOP DRAWINGS TO BE PROVIDED FOR REVIEW AND APPROVAL PRIOR TO PURCHASE.
- CONTRACTOR AT THE TIME OF THE BID TO VERIFY DELIVERY LEAD TIMES FOR ALL DOOR FRAMES AND HARDWARE AND INCLUDED COSTS FOR INSTALLATION WITHIN SCHEDULE, INCLUDING SUCH COSTS AS RS-WELDING, NON STANDARD BUCKS, OVER TIME FABRICATION, ETC.
- ALL HOLLOW METAL DOOR BUCKS TO BE K.D. TYPE FOR NON RATED DOORS. WELDED FRAMES FOR RATED DOORS.
- ALL DOORS AND HARDWARE TO COMPLY WITH COBAMANS STANDARDS LATEST EDITION.
- ALL PAIRS OF DOORS TO BE RIGHT HAND ACTIVE UNLESS OTHERWISE NOTED.
- DOOR HARDWARE IS INDICATED AS PER LEAF.
- ALL HARDWARE TO BE STAINLESS STEEL, 316 FINISH US32D.
- ALL DOORS WITH MAGNETIC OR ELECTRICAL LOCKING DEVICES MUST BE CONNECTED TO THE BUILDING CLASS 'E' SYSTEM AND MUST BE FAIL-SAFE. PROVIDE FINAL CLASS 'E' WORKUPS IN TOTAL WORKING IN CONJUNCTION WITH BUILDING'S VENDOR. GC IS RESPONSIBLE FOR ALL CONNECTIONS.
- GC TO PROVIDE ALL BACKBOXES AND CONDUIT FOR ALL SECURITY RELATED DEVICES. GC TO COORDINATE WITH OWNER'S VENDOR.
- CONTRACTOR AT THE TIME OF THE BID TO VERIFY DELIVERY LEAD TIMES FOR ALL DOOR FRAMES AND HARDWARE AND INCLUDED COSTS FOR INSTALLATION WITHIN SCHEDULE, INCLUDING SUCH COSTS AS RS-WELDING, NON STANDARD BUCKS, OVER TIME FABRICATION, ETC.
- ALL DOORS AND HARDWARE TO COMPLY WITH COBAMANS STANDARDS LATEST EDITION.
- ALL PAIRS OF DOORS TO BE RIGHT HAND ACTIVE UNLESS OTHERWISE NOTED.
- ALL EXISTING DOOR FRAMES AND HARDWARE PART OF BASE BUILDING ARE TO REMAIN AS IS UNLESS OTHERWISE NOTED. DOOR FRAMES TO BE PAINTED AS NOTED ON FINISH PLAN.
- ALL PAINTED DOORS TO BE SEMI GLOSS FINISH.
- FOR ALL EXISTING DOORS TO REMAIN:
  - GC TO REPAIR AND REPAIR AS REQUIRED TO MAKE NEW.
  - GC TO SURVEY AND INCLUDE IN PRICE TO REPLACE ANY EXISTING DOORS TO REMAIN IN POOR OR DAMAGED CONDITION.
- ALL NEW DOORS UNDERCUT 5/8".
- THRESHOLDS SHALL MEET ALL APPLICABLE CODE REQUIREMENTS.
- TO PROVIDE REINFORCED FRAME FOR DOORS WITH DOOR CLOSURE AND/OR PANIC HARDWARE. PANIC HARDWARE SHALL MEET ALL APPLICABLE CODE REQUIREMENTS.
- GC RESPONSIBLE FOR PROVIDING NECESSARY HARDWARE ON ALL DOORS TO MEET FEDERAL, STATE, LOCAL, AND ADA REQUIREMENTS.
- GC TO PROVIDE FIRE DOORS AT LOCATIONS REQUIRED BY LOCAL FIRE CODES.
- EXIT DOORS SHALL BE OPERABLE FROM THE INSIDE WITHOUT THE USE OF A KEY, SPECIAL KNOWLEDGE, OR EFFORT.
- A FLOOR OR LANDING NOT MORE THAN 7' BELOW THE THRESHOLD IS REQUIRED ON EACH SIDE OF AN EXIT DOOR.
- GC SHALL FIELD VERIFY THE CONDITION AND WORKING ORDER OF ALL DOORS, FRAMES, GLAZING, AND HARDWARE. REPLACE DAMAGED DOOR, FRAME, AND/OR HARDWARE AS REQUIRED.



MATERIAL SCHEDULE

TAG	CATEGORY	ITEM DESCRIPTION	FINISH	SPECIFICATION	MANUFACTURER	CONTACT
AC01	Ceiling	2x2 Acoustic Ceiling Tile & Grid	White	2x2 Acoustic Ceiling Tile & Grid. Dura Square 19 in. 1952, 5/8" Thick, Acoustical System in non areas of 2x2 Grid. Product: Dura Square 19 in. 1952, 5/8" Thick, Acoustical System in non areas of 2x2 Grid. Manufacturer: Armstrong. Contact: 1-800-955-5555	Armstrong	
AC02	Ceiling	2x2 Lay-in Ceiling Tile & Grid	White	To be painted PT2 (dryfall paint)		
AC03	Ceiling	2x2 Lay-in Ceiling Tile & Grid	Lacquered Steel (TLG)	Metallic Tn Style 8602. Unperforated 8 1/2" Grid. 5/16" Color: Silver. Manufacturer: Armstrong. Contact: 1-800-955-5555	Armstrong	
AC04	Ceiling	2x2 Lay-in Ceiling Tile & Grid	White	Dura Square 19 in. 1951, 5/8" Thick, Acoustical System in non areas of 2x2 Grid. Product: Dura Square 19 in. 1951, 5/8" Thick, Acoustical System in non areas of 2x2 Grid. Manufacturer: Armstrong. Contact: 1-800-955-5555	Armstrong	
AC05	Ceiling	2x2 Lay-in Ceiling Tile & Grid	White	To be painted PT2 (dryfall paint)		
AC06	Ceiling	2x2 Lay-in Ceiling Tile & Grid	White	To be painted PT2 (dryfall paint)		
AC07	Ceiling	2x2 Lay-in Ceiling Tile & Grid	White	To be painted PT2 (dryfall paint)		
AC08	Ceiling	2x2 Lay-in Ceiling Tile & Grid	White	To be painted PT2 (dryfall paint)		
AC09	Ceiling	2x2 Lay-in Ceiling Tile & Grid	White	To be painted PT2 (dryfall paint)		
AC10	Ceiling	2x2 Lay-in Ceiling Tile & Grid	White	To be painted PT2 (dryfall paint)		
AC11	Ceiling	2x2 Lay-in Ceiling Tile & Grid	White	To be painted PT2 (dryfall paint)		
AC12	Ceiling	2x2 Lay-in Ceiling Tile & Grid	White	To be painted PT2 (dryfall paint)		
AC13	Ceiling	2x2 Lay-in Ceiling Tile & Grid	White	To be painted PT2 (dryfall paint)		
AC14	Ceiling	2x2 Lay-in Ceiling Tile & Grid	White	To be painted PT2 (dryfall paint)		
AC15	Ceiling	2x2 Lay-in Ceiling Tile & Grid	White	To be painted PT2 (dryfall paint)		
AC16	Ceiling	2x2 Lay-in Ceiling Tile & Grid	White	To be painted PT2 (dryfall paint)		
AC17	Ceiling	2x2 Lay-in Ceiling Tile & Grid	White	To be painted PT2 (dryfall paint)		
AC18	Ceiling	2x2 Lay-in Ceiling Tile & Grid	White	To be painted PT2 (dryfall paint)		
AC19	Ceiling	2x2 Lay-in Ceiling Tile & Grid	White	To be painted PT2 (dryfall paint)		
AC20	Ceiling	2x2 Lay-in Ceiling Tile & Grid	White	To be painted PT2 (dryfall paint)		
AC21	Ceiling	2x2 Lay-in Ceiling Tile & Grid	White	To be painted PT2 (dryfall paint)		
AC22	Ceiling	2x2 Lay-in Ceiling Tile & Grid	White	To be painted PT2 (dryfall paint)		
AC23	Ceiling	2x2 Lay-in Ceiling Tile & Grid	White	To be painted PT2 (dryfall paint)		
AC24	Ceiling	2x2 Lay-in Ceiling Tile & Grid	White	To be painted PT2 (dryfall paint)		
AC25	Ceiling	2x2 Lay-in Ceiling Tile & Grid	White	To be painted PT2 (dryfall paint)		
AC26	Ceiling	2x2 Lay-in Ceiling Tile & Grid	White	To be painted PT2 (dryfall paint)		
AC27	Ceiling	2x2 Lay-in Ceiling Tile & Grid	White	To be painted PT2 (dryfall paint)		
AC28	Ceiling	2x2 Lay-in Ceiling Tile & Grid	White	To be painted PT2 (dryfall paint)		
AC29	Ceiling	2x2 Lay-in Ceiling Tile & Grid	White	To be painted PT2 (dryfall paint)		
AC30	Ceiling	2x2 Lay-in Ceiling Tile & Grid	White	To be painted PT2 (dryfall paint)		
AC31	Ceiling	2x2 Lay-in Ceiling Tile & Grid	White	To be painted PT2 (dryfall paint)		
AC32	Ceiling	2x2 Lay-in Ceiling Tile & Grid	White	To be painted PT2 (dryfall paint)		
AC33	Ceiling	2x2 Lay-in Ceiling Tile & Grid	White	To be painted PT2 (dryfall paint)		
AC34	Ceiling	2x2 Lay-in Ceiling Tile & Grid	White	To be painted PT2 (dryfall paint)		
AC35	Ceiling	2x2 Lay-in Ceiling Tile & Grid	White	To be painted PT2 (dryfall paint)		
AC36	Ceiling	2x2 Lay-in Ceiling Tile & Grid	White	To be painted PT2 (dryfall paint)		
AC37	Ceiling	2x2 Lay-in Ceiling Tile & Grid	White	To be painted PT2 (dryfall paint)		
AC38	Ceiling	2x2 Lay-in Ceiling Tile & Grid	White	To be painted PT2 (dryfall paint)		
AC39	Ceiling	2x2 Lay-in Ceiling Tile & Grid	White	To be painted PT2 (dryfall paint)		
AC40	Ceiling	2x2 Lay-in Ceiling Tile & Grid	White	To be painted PT2 (dryfall paint)		
AC41	Ceiling	2x2 Lay-in Ceiling Tile & Grid	White	To be painted PT2 (dryfall paint)		
AC42	Ceiling	2x2 Lay-in Ceiling Tile & Grid	White	To be painted PT2 (dryfall paint)		
AC43	Ceiling	2x2 Lay-in Ceiling Tile & Grid	White	To be painted PT2 (dryfall paint)		
AC44	Ceiling	2x2 Lay-in Ceiling Tile & Grid	White	To be painted PT2 (dryfall paint)		
AC45	Ceiling	2x2 Lay-in Ceiling Tile & Grid	White	To be painted PT2 (dryfall paint)		
AC46	Ceiling	2x2 Lay-in Ceiling Tile & Grid	White	To be painted PT2 (dryfall paint)		
AC47	Ceiling	2x2 Lay-in Ceiling Tile & Grid	White	To be painted PT2 (dryfall paint)		
AC48	Ceiling	2x2 Lay-in Ceiling Tile & Grid	White	To be painted PT2 (dryfall paint)		
AC49	Ceiling	2x2 Lay-in Ceiling Tile & Grid	White	To be painted PT2 (dryfall paint)		
AC50	Ceiling	2x2 Lay-in Ceiling Tile & Grid	White	To be painted PT2 (dryfall paint)		
AC51	Ceiling	2x2 Lay-in Ceiling Tile & Grid	White	To be painted PT2 (dryfall paint)		
AC52	Ceiling	2x2 Lay-in Ceiling Tile & Grid	White	To be painted PT2 (dryfall paint)		
AC53	Ceiling	2x2 Lay-in Ceiling Tile & Grid	White	To be painted PT2 (dryfall paint)		
AC54	Ceiling	2x2 Lay-in Ceiling Tile & Grid	White	To be painted PT2 (dryfall paint)		
AC55	Ceiling	2x2 Lay-in Ceiling Tile & Grid	White	To be painted PT2 (dryfall paint)		
AC56	Ceiling	2x2 Lay-in Ceiling Tile & Grid	White	To be painted PT2 (dryfall paint)		
AC57	Ceiling	2x2 Lay-in Ceiling Tile & Grid	White	To be painted PT2 (dryfall paint)		
AC58	Ceiling	2x2 Lay-in Ceiling Tile & Grid	White	To be painted PT2 (dryfall paint)		
AC59	Ceiling	2x2 Lay-in Ceiling Tile & Grid	White	To be painted PT2 (dryfall paint)		
AC60	Ceiling	2x2 Lay-in Ceiling Tile & Grid	White	To be painted PT2 (dryfall paint)		
AC61	Ceiling	2x2 Lay-in Ceiling Tile & Grid	White	To be painted PT2 (dryfall paint)		
AC62	Ceiling	2x2 Lay-in Ceiling Tile & Grid	White	To be painted PT2 (dryfall paint)		
AC63	Ceiling	2x2 Lay-in Ceiling Tile & Grid	White	To be painted PT2 (dryfall paint)		
AC64	Ceiling	2x2 Lay-in Ceiling Tile & Grid	White	To be painted PT2 (dryfall paint)		
AC65	Ceiling	2x2 Lay-in Ceiling Tile & Grid	White	To be painted PT2 (dryfall paint)		
AC66	Ceiling	2x2 Lay-in Ceiling Tile & Grid	White	To be painted PT2 (dryfall paint)		
AC67	Ceiling	2x2 Lay-in Ceiling Tile & Grid	White	To be painted PT2 (dryfall paint)		
AC68	Ceiling	2x2 Lay-in Ceiling Tile & Grid	White	To be painted PT2 (dryfall paint)		
AC69	Ceiling	2x2 Lay-in Ceiling Tile & Grid	White	To be painted PT2 (dryfall paint)		
AC70	Ceiling	2x2 Lay-in Ceiling Tile & Grid	White	To be painted PT2 (dryfall paint)		
AC71	Ceiling	2x2 Lay-in Ceiling Tile & Grid	White	To be painted PT2 (dryfall paint)		
AC72	Ceiling	2x2 Lay-in Ceiling Tile & Grid	White	To be painted PT2 (dryfall paint)		
AC73	Ceiling	2x2 Lay-in Ceiling Tile & Grid	White	To be painted PT2 (dryfall paint)		
AC74	Ceiling	2x2 Lay-in Ceiling Tile & Grid	White	To be painted PT2 (dryfall paint)		
AC75	Ceiling	2x2 Lay-in Ceiling Tile & Grid	White	To be painted PT2 (dryfall paint)		
AC76	Ceiling	2x2 Lay-in Ceiling Tile & Grid	White	To be painted PT2 (dryfall paint)		
AC77	Ceiling	2x2 Lay-in Ceiling Tile & Grid	White	To be painted PT2 (dryfall paint)		
AC78	Ceiling	2x2 Lay-in Ceiling Tile & Grid	White	To be painted PT2 (dryfall paint)		
AC79	Ceiling	2x2 Lay-in Ceiling Tile & Grid	White	To be painted PT2 (dryfall paint)		
AC80	Ceiling	2x2 Lay-in Ceiling Tile & Grid	White	To be painted PT2 (dryfall paint)	</	