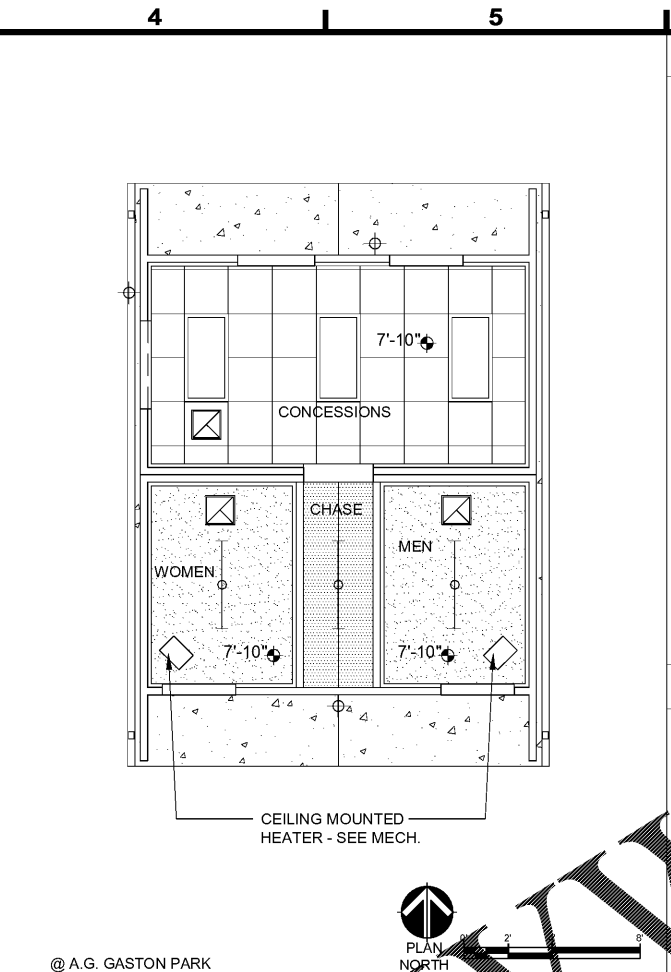


ROOF PLAN NOTES

- 01 SIMULATED STANDING SEAM METAL PANEL ROOFING
- 02 PRE-FINISHED DOWNSPOUT
- 03 PRE-FINISHED GUTTER
- 04 VENT THROUGH ROOF - SEE MECHANICAL. PROVIDE PIPE BOOT FLASHING SET IN FULL SEALANT BED. COORDINATE VENT PENETRATION WITH SIMULATED STANDING SEAM RIBS



RCP GENERAL NOTES

1. LIGHT FIXTURES AND MECHANICAL GRILLES ARE SHOWN FOR COORDINATION. FOR FIXTURE TYPES AND QUANTITIES REFER TO ELECTRICAL AND MECHANICAL DRAWINGS AND SPECIFICATIONS UNLESS NOTED OTHERWISE.
2. SUB-CONTRACTOR TO COORDINATE WITH GENERAL CONTRACTOR FOR ABOVE CEILING INSPECTIONS PRIOR TO INSTALLATION OF GYP. BOARD CEILINGS AND CEILING TILES.
3. CENTER 2X2 CEILING GRID SYSTEM WITHIN ROOMS AND SPACE UNLESS NOTED OTHERWISE.
4. HEIGHTS FOR ALL EXTERIOR CONDITIONS ARE GIVEN AS ABOVE FINISH FLOOR LEVEL.
5. PAINT ALL EXPOSED MECHANICAL DUCTS, PLUMBING, DECKING AND STRUCTURE, etc. IN THE OPEN CEILING AREA WITH 'CEILING WHITE' PAINT, FLAT FINISH.
6. CONTRACTOR TO COORDINATE LOCATIONS OF ALL HVAC, ELECTRICAL, PLUMBING AND STRUCTURE.
7. CONTRACTOR TO COORDINATE LOCATION OF OVERHEAD COUNTER DOOR HOOD WITH CEILING HEIGHT AND NOTIFY ARCHITECT OF CONFLICTS PRIOR TO INSTALLATION.

RCP LEGEND

- 2 X 2 LAYERS FULL FACED GYPSUM PANEL CEILING AND ENVIRONMENTAL GRID SYSTEM
- SUSPENDED PANELS GYP BD CEILING w/MOISTURE RESISTANT GYP BD
- FRP CEILING PANEL
- PAINTED PRECAST CONCRETE ROOF PANEL
- 2 X 4 RECESSED LIGHT FIXTURE
- SURFACE MOUNTED LIGHT FIXTURE
- WALL MOUNTED LIGHT FIXTURE
- HVAC EXHAUST
- CEILING HEIGHT ABOVE FINISH FLOOR

GENERAL NOTES

1. PREFABRICATED RESTROOM BUILDING BY AES PRECAST OR PRIOR APPROVED EQUAL.
2. BUILDING SHALL BE ANCHORED TO CONCRETE SLAB AND FOOTING PER MANUFACTURER'S REQUIREMENTS.
3. SEAL ALL JOINTS BETWEEN PANELS AND SLAB.
4. ALL EXTERIOR COLORS TO BE SELECTED BY ARCHITECT.
5. AT SITE 'A' - A.G. GASTON PARK: ALL ELECTRICAL OUTLETS AND HVAC EQUIPMENT TO MOUNT ABOVE THE BASE-FLOOD ELEVATION. COORDINATE WITH CIVIL, ELECTRICAL, MECHANICAL AND PLUMBING DRAWINGS.

PROJECT TITLE
**CITY OF BIRMINGHAM
 PARKS & RECREATION
 PRE-FABRICATED
 BUILDING PACKAGE**

SITE
**A.G. GASTON PARK
 916 WASHINGTON AVENUE
 BIRMINGHAM, AL 35211**

STAMP

1721 4TH AVENUE
 NORTH, SUITE 101
 BIRMINGHAM, AL 35203
 www.studio2hd.com

OFFICE: 205-264-9988
 FAX: 205-264-9992

NOT FOR CONSTRUCTION
 RELEASED FOR CONSTRUCTION

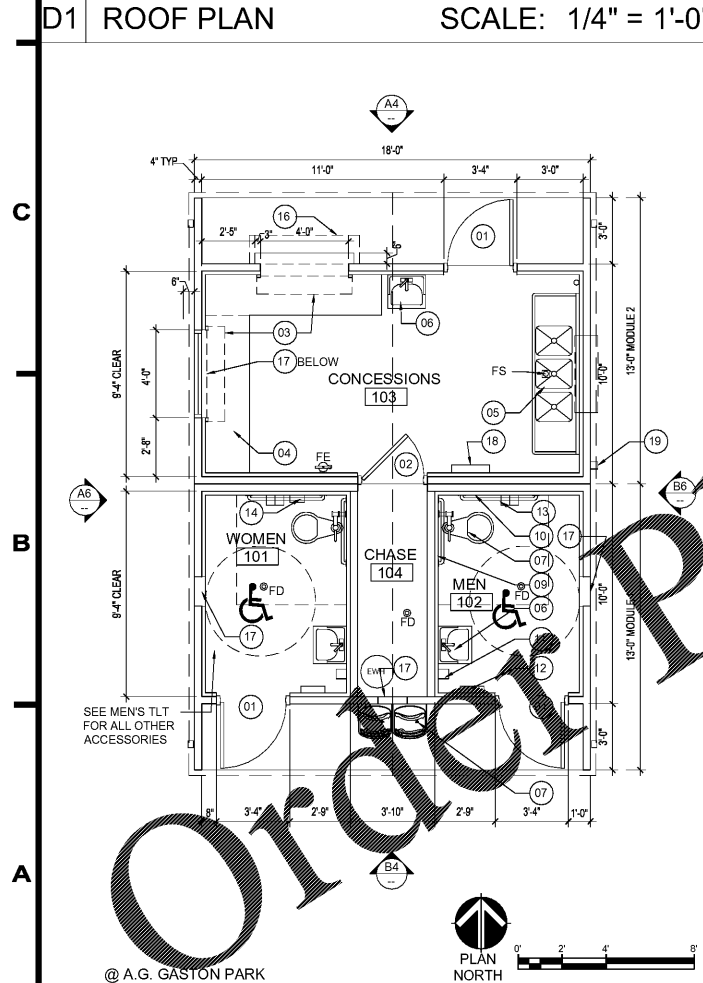
DATE: AUGUST 23, 2017

DRAWN BY: SAM

REVIEWED BY: NH

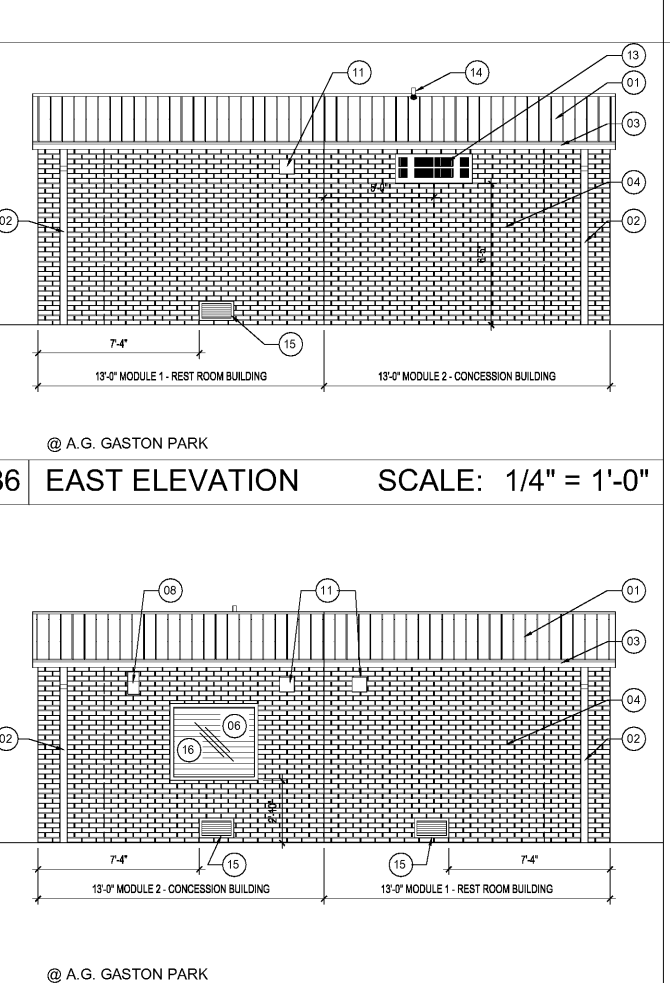
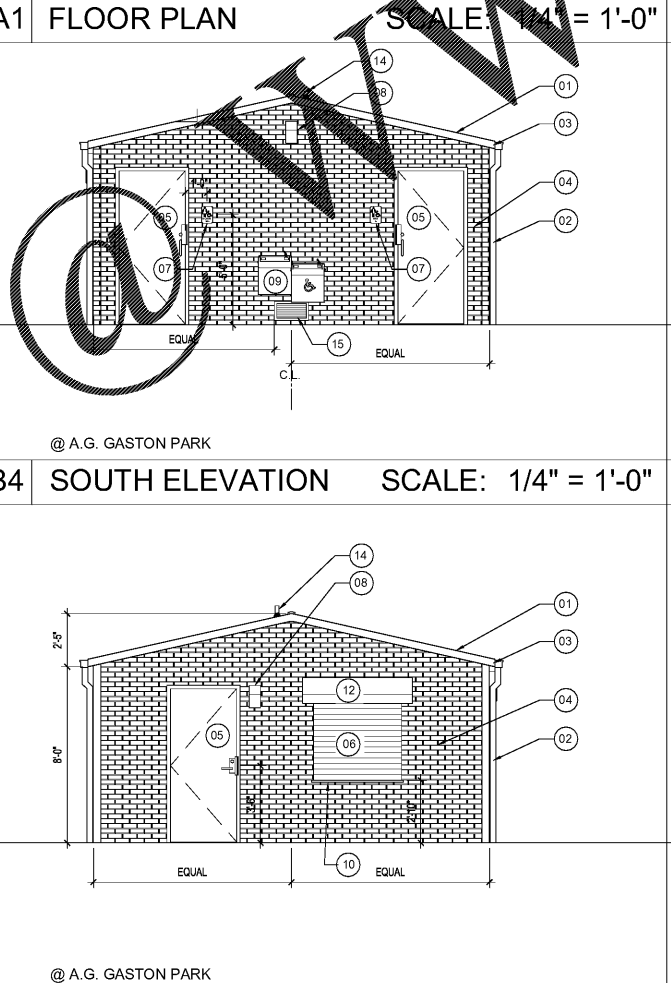
REUSE OF DOCUMENTS
 THIS DOCUMENT, THE IDEAS AND DESIGNS INCORPORATED HEREIN, IS AN INSTRUMENT OF STUDIO 2H DESIGN, LLC AND MUST NOT BE USED IN WHOLE OR IN PART, FOR ANY OTHER PROJECT WITHOUT THE WRITTEN AUTHORIZATION OF STUDIO 2H DESIGN, LLC
NOLANDA HATCHER & CREIG HOSKINS

Revision	Date	Description



FLOOR PLAN NOTES

- 01 3'-0" x 7'-0" PAINTED H.M. DOOR & FRAME
- 02 2'-10" x 7'-0" PAINTED H.M. DOOR & FRAME
- 03 OVERHEAD COUNTER DOOR (48" x 48")
- 04 STAINLESS STEEL COUNTERTOP
- 05 3 COMPARTMENT SINK
- 06 ADA HAND SINK
- 07 ADA HEIGHT TOILET
- 08 HI-LO ELECTRIC WATER COOLER
- 09 GRAB BAR 36"
- 10 GRAB BAR 42"
- 11 SOAP DISPENSER
- 12 PAPER TOWEL DISPENSER
- 13 TOILET TISSUE DISPENSER
- 14 SANITARY WASTE DISPOSAL UNIT
- 15 PRE-FINISHED DOWNSPOUT
- 16 FLOOR DRAIN
- 17 AT A.G. GASTON LOCATION: INSTALL FLOOD VENT (16" x 8" x 5") EQUAL TO FLOOD FLAP MODEL #FFWF05TF
- 18 ELECTRICAL PANEL - COORDINATE w/ELECTRICAL
- 19 ELECTRICAL FUSED DISCONNECT SWITCH - COORDINATE w/ELECTRICAL



ELEVATION NOTES

- 01 SIMULATED STANDING SEAM METAL PANEL ROOFING
- 02 PRE-FINISHED DOWNSPOUT
- 03 PRE-FINISHED GUTTER
- 04 SIMULATED BRICK
- 05 PAINTED H.M. DOOR & FRAME
- 06 OVERHEAD COUNTER DOOR & FRAME (48" WIDE x 42" TALL)
- 07 RESTROOM SIGN
- 08 LIGHT FIXTURE
- 09 ELECTRIC WATER COOLER
- 10 STAINLESS STEEL COUNTERTOP
- 11 EXHAUST FAN WALL CAP - SEE MECHANICAL
- 12 FLY FAN - SEE MECHANICAL
- 13 HVAC UNIT GRILLE - COORDINATE WITH MECHANICAL
- 14 PLUMBING THROUGH ROOF WITH PIPE BOOT FLASHING COORDINATE WITH MECHANICAL
- 15 AT A.G. GASTON LOCATION: INSTALL FLOOD VENT (16" x 8" x 5") EQUAL TO FLOOD FLAP MODEL #FFWF05TF
- 16 48"W x 42"H H.M. WINDOW FRAME WITH INSULATED GLAZING

SHEET TITLE
**A.G. GASTON PARK
 CONCESSION BUILDING
 PLANS & ELEVATIONS**

DRAWING NUMBER
A2.1

PROJECT NUMBER
201626