

CODE REVIEW DATA - SITES 'A' & 'C'

PROJECT DESCRIPTION:
ADDITION OF A PREFABRICATED RESTROOM/CONCESSION BUILDING

APPLICABLE CODES:
International Building Code 2015
International Plumbing Code 2015
International Mechanical Code 2015
International Fire Prevention Code 2015
National Electrical Code 2014
2010 ADA Standards for Accessible Design

PROJECT INFORMATION
OCCUPANCY CLASSIFICATION: BUSINESS
AREA CALCULATION
ALLOWABLE HEIGHT: 55' (3 STORIES) ACTUAL HEIGHT: 1 STORY
ALLOWABLE FLOOR AREA: 23,000 SF Area Per Floor: 360 SF GROSS

CONSTRUCTION TYPE:
Table 500, Type IIB, Unprotected

FIRE RESISTANCE RATING REQUIREMENTS FOR BUILDING ELEMENTS
Type II, B (Unprotected) Tables 601 and 602

Building Elements	Required by 2015 IBC	Code Section	Provided in this Project
Primary structural frame including columns and beams	0 Hour	Table 601	0 Hour
Exterior Bearing Walls >30'	0 Hour	Table 602	0 Hour
Interior Bearing Walls	0 Hour	Table 601	0 Hour
Exterior Nonbearing Walls and Partitions >30'	0 Hour	Table 602	0 Hour
Interior Nonbearing walls	0 Hour	Table 601	0 Hour
Floor Construction including Floor/Ceiling Assembly	0 Hour	Table 601	0 Hour
Roof Construction including Supporting Beams and Joists	0 Hour	Table 601	0 Hour
Corridor Walls	0 Hour	Table 1016.1	0 Hour
Fire Walls	2 Hour	Table 706.4	2 Hour

FIRE RESISTANCE RATING REQMTNS FOR EXTERIOR WALLS BASED ON FIRE SEPARATION DISTANCE
Horizontal separation (distance from common property line or assumed property line)

Horizontal Separation	Required Rating
0 ft. to 5 ft.	1 Hour
over 5 ft. to 10 ft.	1 Hour
over 10 ft. to 30 ft.	1 Hour
over 30 ft.	0 Hour

FIRE DOOR AND FIRE SHUTTER FIRE PROTECTION RATING Chapter 7, Table 716.5
Component Walls and Partition Opening Protectives

TABLE 716.5

Item	WALLS	OPENINGS
Fire Walls and Fire Barriers having required Fire Resistant Rating Greater Than 1 Hour	2 Hour	1 1/2 Hour
Fire Barriers having a required Fire Resistant Rating of 1 Hour Shaft, Exit Enclosure and Exit Passageway Walls	1 Hour	1 Hour
Other Fire Barriers	1 Hour	3/4 Hour
Fire Partitions Corridor Walls	1 Hour	20 Min.

MINIMUM INTERIOR FINISH CLASSIFICATION Chapter 8, Table 803.9
BUSINESS OCCUPANCY

GROUP	EXIT ENCLOSURE & PASSAGEWAYS	COORIDOR	ROOMS & SPACES
B	N/A	N/A	C

GROUP B OCCUPANCY
Project Calculations
CONCESSION SPACE - 153 SF + 100 GROSS = 2 OCCUPANTS
CHASE SPACE - 31 SF + 300 GROSS = 1 OCCUPANT

Item	Required by 2015 IBC	Code Section	Provided in this Project
Occupant Load	3	Table 1004.1.1	3
Minimum # of Exits	1 Exit	Section 1021.1	1 Exit
Minimum Corridor Width	N/A	Section 1018.2	N/A
Minimum Door Width	32"	Section 1008.1.1	32"
Maximum Dead End Corridor	N/A	Section 1018.4	NOT APPLICABLE
Maximum Distance to Exit	200'	Table 1016.1	23'

MINIMUM NUMBER OF EXITS FOR ALL OCCUPANT LOAD
A Single exit is permitted per 1006.3.2

MAXIMUM TRAVEL DISTANCE, DEAD-END LENGTH, EXIT AND MEANS OF EGRESS WIDTH
Chapter 10, Table 1016.1
Maximum travel distance to exit 200 ft. without sprinkler system/250 ft. with sprinkler system

OCCUPANT LOAD (TABLE 1004.1.1)
BUSINESS 100 SF GROSS

OCCUPANT LOAD FOR PLUMBING FIXTURES
BUILDING AREA 360 SF
TOTAL OCCUPANTS FOR PLUMBING: 3 OCC

TOTAL REQUIRED PLUMBING FIXTURES PER FLOOR (TABLE 2902.1):
MEN:
WC: 1 / 25 = 1 FIXTURE: 1 PROVIDED
LAV: 1 / 40 = 1 FIXTURE: 1 PROVIDED
WOMEN:
WC: 1 / 25 = 1 FIXTURE: 1 PROVIDED
LAV: 1 / 40 = 2 FIXTURE: 1 PROVIDED
DRINKING FOUNTAINS: 1 / 100 = 1 FIXTURE: 1 HI-LOW FIXTURE: 1 PROVIDED

OCCUPANT LOAD FOR EXITING PER FLOOR
BUSINESS: 360 SF / 150 GSF = 3 OCC
TOTAL OCCUPANTS FOR EXITING PER FLOOR: 3 OCC

EGRESS REQUIREMENTS (TABLE 1016.1)
3 x 30" = 90" REQUIRED
EGRESS WIDTH PROVIDED: 90"

CODE REVIEW DATA - SITES 'B'

PROJECT DESCRIPTION:
ADDITION OF A PREFABRICATED GUARD HOUSE BUILDING

APPLICABLE CODES:
International Building Code 2015
International Plumbing Code 2015
International Mechanical Code 2015
International Fire Prevention Code 2015
National Electrical Code 2014
2010 ADA Standards for Accessible Design

PROJECT INFORMATION
OCCUPANCY CLASSIFICATION: BUSINESS
AREA CALCULATION
ALLOWABLE HEIGHT: 55' (3 STORIES) ACTUAL HEIGHT: 1 STORY
ALLOWABLE FLOOR AREA: 23,000 SF Area Per Floor: 72 SF GROSS

CONSTRUCTION TYPE:
Table 500, Type IIB, Unprotected

FIRE RESISTANCE RATING REQUIREMENTS FOR BUILDING ELEMENTS
Type II, B (Unprotected) Tables 601 and 602

Building Elements	Required by 2015 IBC	Code Section	Provided in this Project
Primary structural frame including columns and beams	0 Hour	Table 601	0 Hour
Exterior Bearing Walls >30'	0 Hour	Table 602	0 Hour
Interior Bearing Walls	0 Hour	Table 601	0 Hour
Exterior Nonbearing Walls and Partitions >30'	0 Hour	Table 602	0 Hour
Interior Nonbearing walls	0 Hour	Table 601	0 Hour
Floor Construction including Floor/Ceiling Assembly	0 Hour	Table 601	0 Hour
Roof Construction including Supporting Beams and Joists	0 Hour	Table 601	0 Hour
Corridor Walls	0 Hour	Table 1016.1	0 Hour
Fire Walls	2 Hour	Table 706.4	2 Hour

FIRE RESISTANCE RATING REQMTNS FOR EXTERIOR WALLS BASED ON FIRE SEPARATION DISTANCE
Horizontal separation (distance from common property line or assumed property line)

Horizontal Separation	Required Rating
0 ft. to 5 ft.	1 Hour
over 5 ft. to 10 ft.	1 Hour
over 10 ft. to 30 ft.	1 Hour
over 30 ft.	0 Hour

FIRE DOOR AND FIRE SHUTTER FIRE PROTECTION RATING Chapter 7, Table 716.5
Component Walls and Partition Opening Protectives

TABLE 716.5

Item	WALLS	OPENINGS
Fire Walls and Fire Barriers having required Fire Resistant Rating Greater Than 1 Hour	2 Hour	1 1/2 Hour
Fire Barriers having a required Fire Resistant Rating of 1 Hour Shaft, Exit Enclosure and Exit Passageway Walls	1 Hour	1 Hour
Other Fire Barriers	1 Hour	3/4 Hour
Fire Partitions Corridor Walls	1 Hour	20 Min.

MINIMUM INTERIOR FINISH CLASSIFICATION Chapter 8, Table 803.9
BUSINESS OCCUPANCY

GROUP	EXIT ENCLOSURE & PASSAGEWAYS	COORIDOR	ROOMS & SPACES
B	N/A	N/A	C

GROUP B OCCUPANCY
Project Calculations
BUSINESS OCCUPANCY - 59 SF + 100 GROSS = 1 OCCUPANTS

Item	Required by 2015 IBC	Code Section	Provided in this Project
Occupant Load	1	Table 1004.1.1	1
Minimum # of Exits	1 Exit	Section 1021.1	1 Exit
Minimum Corridor Width	N/A	Section 1018.2	N/A
Minimum Door Width	32"	Section 1008.1.1	32"
Maximum Dead End Corridor	N/A	Section 1018.4	NOT APPLICABLE
Maximum Distance to Exit	200'	Table 1016.1	15'

MINIMUM NUMBER OF EXITS FOR ALL OCCUPANT LOAD
A Single exit is permitted per 1006.3.2

MAXIMUM TRAVEL DISTANCE, DEAD-END LENGTH, EXIT AND MEANS OF EGRESS WIDTH
Chapter 10, Table 1016.1
Maximum travel distance 200 ft. without sprinkler system/250 ft. with sprinkler system

CODE REVIEW DATA - SITES 'D'

PROJECT DESCRIPTION:
ADDITION OF A PREFABRICATED CHEMICAL STORAGE BUILDING (POOL STORAGE)

APPLICABLE CODES:
International Building Code 2015
International Plumbing Code 2015
International Mechanical Code 2015
International Fire Prevention Code 2015
National Electrical Code 2014
2010 ADA Standards for Accessible Design

PROJECT INFORMATION
OCCUPANCY CLASSIFICATION: BUSINESS
AREA CALCULATION
ALLOWABLE HEIGHT: 55' (3 STORIES) ACTUAL HEIGHT: 1 STORY
ALLOWABLE FLOOR AREA: 23,000 SF Area Per Floor: 176 SF GROSS

CONSTRUCTION TYPE:
Table 500, Type IIB, Unprotected

FIRE RESISTANCE RATING REQUIREMENTS FOR BUILDING ELEMENTS
Type II, B (Unprotected) Tables 601 and 602

Building Elements	Required by 2015 IBC	Code Section	Provided in this Project
Primary structural frame including columns and beams	0 Hour	Table 601	0 Hour
Exterior Bearing Walls >30'	0 Hour	Table 602	0 Hour
Interior Bearing Walls	0 Hour	Table 601	0 Hour
Exterior Nonbearing Walls and Partitions >30'	0 Hour	Table 602	0 Hour
Interior Nonbearing walls	0 Hour	Table 601	0 Hour
Floor Construction including Floor/Ceiling Assembly	0 Hour	Table 601	0 Hour
Roof Construction including Supporting Beams and Joists	0 Hour	Table 601	0 Hour
Corridor Walls	0 Hour	Table 1016.1	0 Hour
Fire Walls	2 Hour	Table 706.4	2 Hour

FIRE RESISTANCE RATING REQMTNS FOR EXTERIOR WALLS BASED ON FIRE SEPARATION DISTANCE
Horizontal separation (distance from common property line or assumed property line)

Horizontal Separation	Required Rating
0 ft. to 5 ft.	1 Hour
over 5 ft. to 10 ft.	1 Hour
over 10 ft. to 30 ft.	1 Hour
over 30 ft.	0 Hour

FIRE DOOR AND FIRE SHUTTER FIRE PROTECTION RATING Chapter 7, Table 716.5
Component Walls and Partition Opening Protectives

TABLE 716.5

Item	WALLS	OPENINGS
Fire Walls and Fire Barriers having required Fire Resistant Rating Greater Than 1 Hour	2 Hour	1 1/2 Hour
Fire Barriers having a required Fire Resistant Rating of 1 Hour Shaft, Exit Enclosure and Exit Passageway Walls	1 Hour	1 Hour
Other Fire Barriers	1 Hour	3/4 Hour
Fire Partitions Corridor Walls	1 Hour	20 Min.

MINIMUM INTERIOR FINISH CLASSIFICATION Chapter 8, Table 803.9
BUSINESS OCCUPANCY

GROUP	EXIT ENCLOSURE & PASSAGEWAYS	COORIDOR	ROOMS & SPACES
B	N/A	N/A	C

GROUP B OCCUPANCY
Project Calculations
BUSINESS OCCUPANCY - 59 SF + 300 GROSS = 1 OCCUPANT

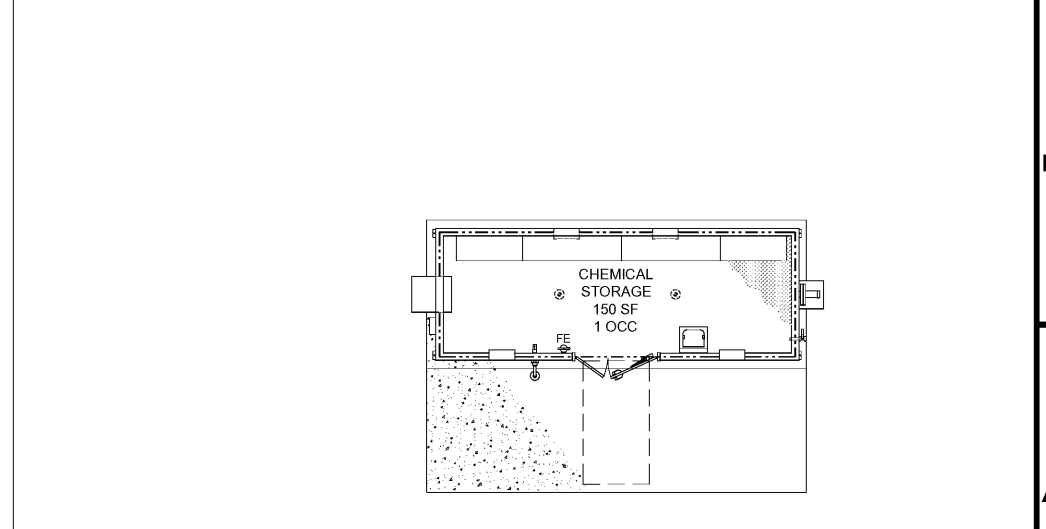
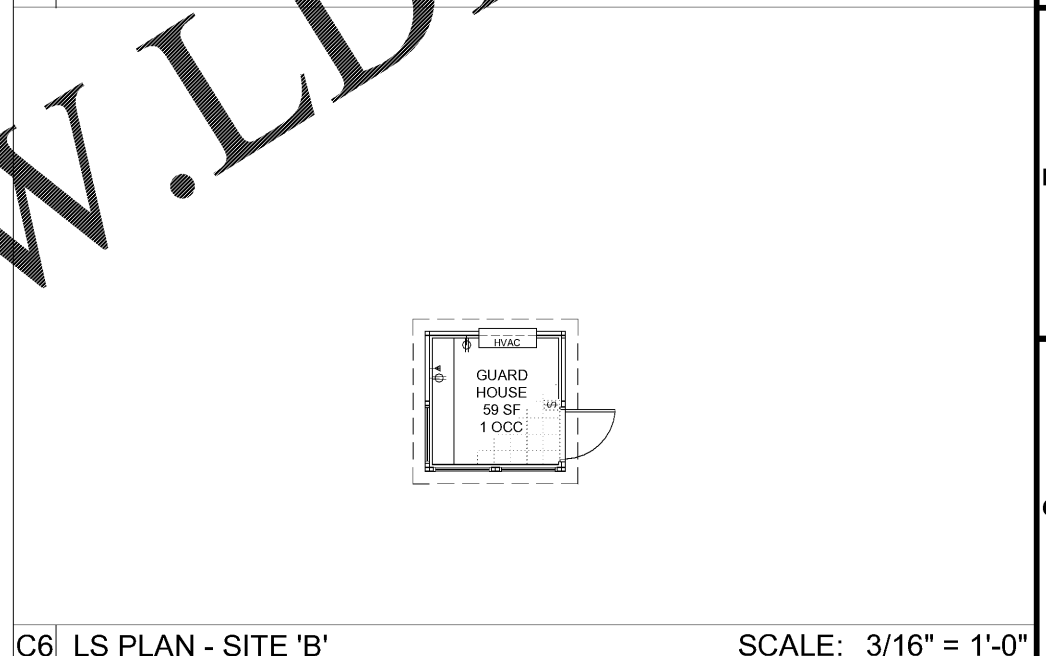
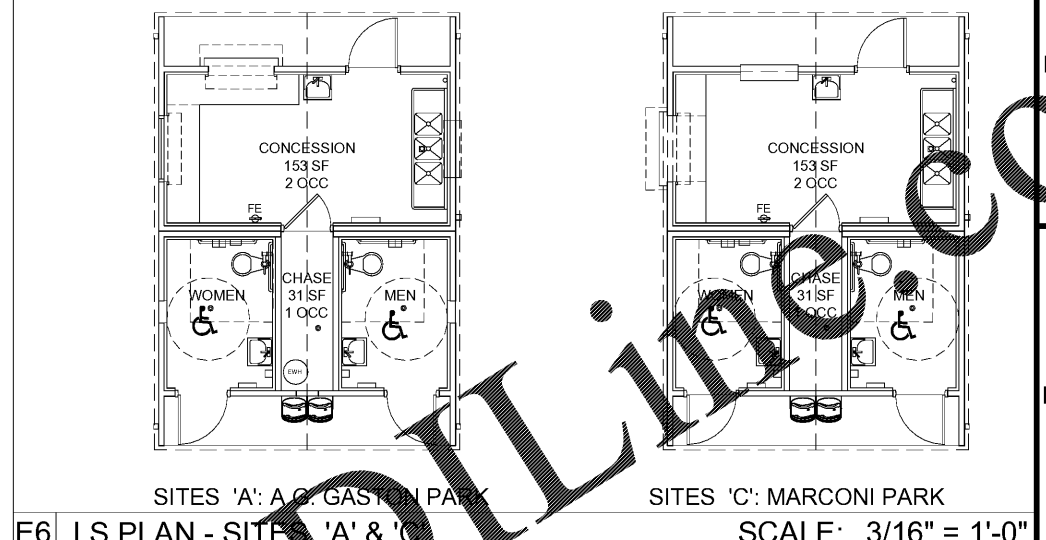
Item	Required by 2015 IBC	Code Section	Provided in this Project
Occupant Load	1	Table 1004.1.1	1
Minimum # of Exits	1 Exit	Section 1021.1	2 Exits
Minimum Corridor Width	N/A	Section 1018.2	N/A
Minimum Door Width	32"	Section 1008.1.1	32"
Maximum Dead End Corridor	N/A	Section 1018.4	NOT APPLICABLE
Maximum Distance to Exit	200'	Table 1016.1	15'

MINIMUM NUMBER OF EXITS FOR ALL OCCUPANT LOAD
A Single exit is permitted per 1006.3.2

MAXIMUM TRAVEL DISTANCE, DEAD-END LENGTH, EXIT AND MEANS OF EGRESS WIDTH
Chapter 10, Table 1016.1
Maximum travel distance to exit 200 ft. without sprinkler system/250 ft. with sprinkler system

LEGEND

- 1 HR RATED WALL (Solid line with dashes)
- 2 HR RATED WALL (Dashed line)
- ASSUMED PROPERTY LINE (Dotted line)
- NEW WALL-MOUNTED FIRE EXTINGUISHER (FE)
- NEW FIRE EXTINGUISHER CABINET (FIC)
- EXIT SIGN - SHADED AREA DENOTES DIRECTIONAL ARROWS (ES)
- EXIT ROUTE (Arrow)
- TRAVEL DISTANCE TO EXIT ACCESS (Arrow with 'T')
- MAXIMUM DISTANCE (SEE 1016.1) MOST REMOTE POINT TO EXIT (UNSPRINKLERED) OCCUPANCY B (Arrow with 'M')



PROJECT TITLE
CITY OF BIRMINGHAM
PARKS & RECREATION
PREFABRICATED
BUILDING PACKAGE
SITE
POTENTIAL GARDENS
12 LANE PARK RD
BIRMINGHAM AL 35223
STAMP

STATE OF ALABAMA
REGISTERED ARCHITECT
NOLANDA HARTNER
NO. 4484
BIRMINGHAM, ALABAMA

1721 4TH AVENUE
NORTH, SUITE 101
BIRMINGHAM, AL 35203
www.studio2hd.com

OFFICE: 205-264-9988
FAX: 205-264-9992

NOT FOR CONSTRUCTION
RELEASED FOR CONSTRUCTION

DATE: AUGUST 23, 2017

DRAWN BY: SAM

REVIEWED BY: NH

REUSE OF DOCUMENTS
THIS DOCUMENT, THE IDEAS AND DESIGNS INCORPORATED HEREIN, IS AN INSTRUMENT OF STUDIO 2H DESIGN, LLC AND MUST NOT BE USED IN WHOLE OR IN PART, FOR ANY OTHER PROJECT WITHOUT THE WRITTEN AUTHORIZATION OF STUDIO 2H DESIGN, LLC
NOLANDA HARTNER & CREIG HOBKINS

REVISIONS

Revision	Date	Description

SHEET TITLE
LIFE SAFETY CODE & LIFE SAFETY PLANS
DRAWING NUMBER
A0.1
PROJECT NUMBER
201626