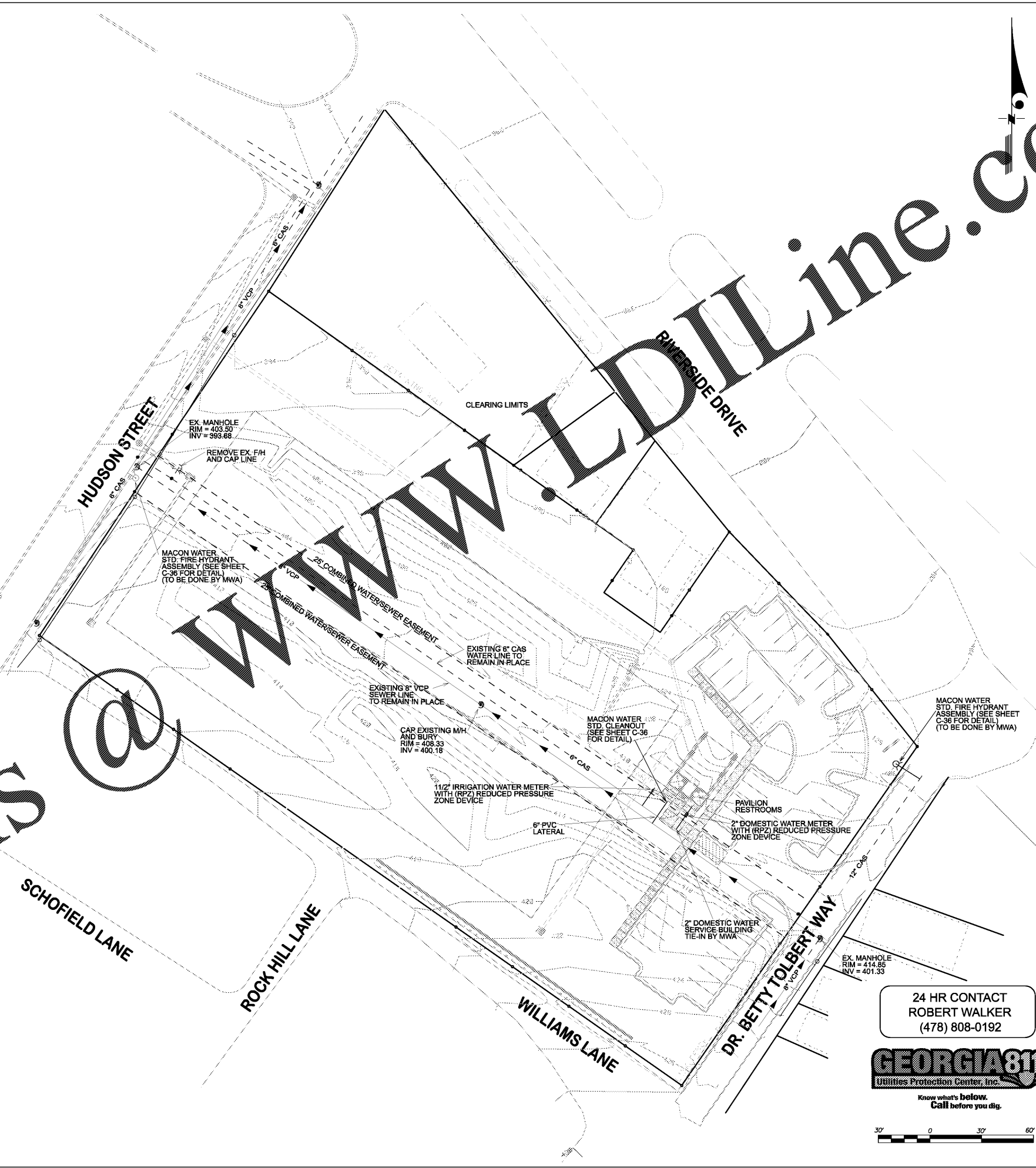
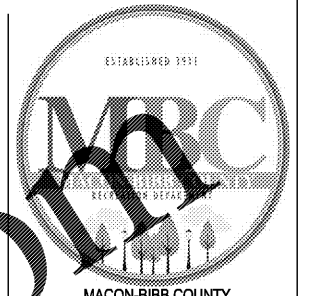


1. ALL COMMERCIAL PROJECTS REQUIRE THE INSTALLATION OF AN APPROVED TESTABLE DOUBLE CHECK VALVE ASSEMBLY BY THE CONTRACTOR ON THE CUSTOMER-SIDE OF DOMESTIC AND IRRIGATION METERS. BUSINESSES THAT POSE A GREATER DEGREE OF HAZARD MAY REQUIRE ADDITIONAL PROTECTION. THE DOUBLE DETECTOR CHECKVALVE DOES NOT REQUIRE A BACKFLOW PREVENTION DEVICE.
2. WATER DISTRIBUTION AND WASTEWATER COLLECTION SYSTEMS INSTALLED BY CONTRACTORS / DEVELOPERS WHICH ARE ACCEPTED BY THE AUTHORITY FOR OWNERSHIP, OPERATION AND MAINTENANCE SHALL BE WARRANTED AND GUARANTEED FOR A PERIOD OF ONE YEAR FROM THE DATE OF FINAL ACCEPTANCE THAT THE COMPLETED SYSTEM IS FREE FROM ALL DEFECTS DUE TO FAULTY PRODUCTS OR WORKMANSHIP, AND THAT THE CONTRACTOR / DEVELOPER SHALL MAKE SUCH CORRECTIONS AS MAY BE NECESSARY BY REASON OF SUCH DEFECTS UPON NOTICE BY THE AUTHORITY.
3. WATER DISTRIBUTION AND WASTEWATER COLLECTION SYSTEMS INSTALLED BY CONTRACTORS / DEVELOPERS WHICH ARE ACCEPTED BY THE AUTHORITY FOR OWNERSHIP, OPERATION AND MAINTENANCE SHALL BE INSTALLED IN EITHER DEDICATED STREETS OR EASEMENTS. EASEMENTS SHALL BE PROPERLY EXECUTED AND RECORDED. THE EASEMENTS SHALL BE CLEARED OF ALL STRUCTURES, TREES, SHRUBS, BRUSH, LOGS, UPTURNED STUMPS AND ROOTS OF DOWNED TREES AND SIMILAR ITEMS.
3. ALL FIRE LINES SHALL BE DUCTILE IRON CONFORMING TO ANSI A21.51 OR AWWA C151
4. NO PARKING FIRE LANE SIGNS SHOULD READ ON BOTH SIDES "NO PARKING FIRE LANE"; LETTERS SHALL NOT BE LESS THAN 2 INCHES IN HEIGHT; ONE SIGN SHALL BE POSTED AT BEGINNING OF FIRE LANE WITH SIGNS NOT MORE THAN 100' APART. SIGNS SHALL NOT BE MORE THAN 4' FROM BACK OF CURB AND SHALL BE VISIBLE FROM BOTH DIRECTIONS. HEIGHT OF SIGN FACE AS MEASURED FROM BOTTOM OF SIGN SHALL BE A MINIMUM OF 4' AND A MAX OF 7' FROM GROUND LEVEL. DECORATIVE SIGNAGE MAY BE USED WITH SEPARATE FIRE MARSHAL'S APPROVAL. FOR LANES 20' TO 28' MARKING AND SIGNS SHALL BE ON BOTH SIDES. CURBING OR LINEAGE DELINEATING FIRE LANE SHALL BE PAINTED RED. THE TOP AND FACE OF CURB SHALL BE PAINTED.
5. DUCTILE IRON PIPE (DIP) SHALL CONFORM TO ANSI / AWWA C151 / A21.51 AND SHALL BE A MINIMUM OF PRESSURE CLASS 350. PIPE AND FITTINGS SHALL BE CEMENT LINED IN ACCORDANCE WITH ANSI / AWWA - C104 A21.4. FITTINGS SHALL CONFORM TO ANSI / AWWA C110 / A21.0 OR ANSI / AWWA C153 / A21.53 WITH RATED WORKING PRESSURE OF 350 PSI. PIPE AND FITTINGS SHALL BE FURNISHED WITH A BITUMINOUS OUTSIDE COATING. JOINTS SHALL BE PUSH-ON TYPE FOR PIPE AND STANDARD MECHANICAL OR FLANGED JOINTS FOR FITTINGS. DUCTILE IRON PIPE SHALL BE USED ON ALL WATER SYSTEMS, INCLUDING SYSTEMS BEHIND MASTER METERS. THE SYSTEMS BEHIND MASTER METERS SHALL BE PRESSURE TESTED, DISINFECTED AND THE RESULTS SHALL BE AVAILABLE FOR MACON WATER AUTHORITY'S REVIEW.
6. ALL VALVES SHALL BE EQUIPPED WITH VALVE BOXES. VALVE BOXES SHALL BE HEAVY ROADWAY TYPE. THE VALVE BOXES SHALL BE ADJUSTABLE TO 6" UP OR DOWN FROM THE NOMINAL REQUIRED COVER OVER THE PIPE. PROVIDE A 4" THICK, 18" SQUARE OR ROUND CONCRETE PAD AROUND THE VALVE BOX. THIS MUST BE PLACED AT GRADE.
7. ALL FIRE HYDRANTS SHALL CONFORM TO THE REQUIREMENTS OF AWWA C502 FOR 250 PSI WORKING PRESSURE. HYDRANTS SHALL BE THE COMPRESSION TYPE, CLOSING WITH LINE PRESSURE. THE VALVE OPENING SHALL NOT BE LESS THAN 5" INCHES. ALL VALVES SHALL OPEN LEFT.
8. USE SANITARY SEWER MATERIAL (SDR 26) - REFER TO SECTIO 2.04 (B) PVC GRAVITY SEWER PIPELINE
9. PLACE BLACK PLASTIC BAGS OVER ANY OUT OF SERVICE FIRE HYDRANTS
10. PLACE METALLIC LOCATOR TAPE ON ALL LATERALS
11. (RPZ) TYPE BACKFLOW DEVICES TO BE USED ON DOMESTIC METERS AND (DC) TYPE BACK FLOW ON IRRIGATION METERS
12. ALL BACKFLOW PREVENTION DEVICES MUST BE INSTALLED AND TESTED WITHIN (7) BUSINESS DAYS AFTER METER INSTALLATIONS AND ESTABLISHED USE OF METER ACCOUNTS.

WM	WATER METER
RPZ	BACK FLOW PREVENTER (REDUCED PRESSURE ZONE)
D/C	DOUBLE CHECK VALVE
	LINE END CAP WITH BLOCKING
	FIRE HYDRANT ASSEMBLY
	GATE VALVE ASSEMBLY
	PROPOSED SEWER MANHOLES
	EXISTING SEWER MANHOLES



24 HR CONTACT
 ROBERT WALKER
 (478) 808-0192



MACON-BIBB COUNTY
 RECREATION DEPARTMENT
 115 Willie Smokie Glover Drive
 Macon, Georgia 31201
 Contact: Mr. Reggie Moore, Director

WISE AVE.
 PARK



300 Chastain Center Blvd, Ste 325
 Kennesaw, Georgia 30144
 TEL: (770) 627-3590 FAX: (770) 627-3594
 V&M Contact:
 Paul 'Ken' Hammon, PE (770) 639-7797
 KENTUCKY 606-248-6600 NORTH CAROLINA 828-253-2796
 TENNESSEE 865-546-5800 SOUTH CAROLINA 864-574-4775
 www.vaughnmelton.com
 Copyright © 2015
 All Rights Reserved

Schroeder Architects

ARCHITECTURE-MASTER PLANNING-INTERIORS

3118 East Shadown Ave. NE
 Atlanta, Georgia 30305
 TEL: (404) 775-2626

email: david@schroeder-architects.com



Project Name: WISE AVENUE PARK
 Project Number:
 Drawn By: Ck'd By:
 Date: Scale: As shown

Rev.	Description:	Date:
1.	SUBMITTED TO COUNTY	11/16/17
2.	REVISED PER COUNTY COMMENTS	03/12/18

UTILITY PLAN

C-10