

NOTE: PIPE BEDDING NOTES

THE DEPARTMENT OF TRANSPORTATION, STATE OF GEORGIA STANDARD "PIPE CULVERTS" NUMBER 1030D, LATEST EDITION SHALL BE USED IN DETERMINING THE CLASS OF REINFORCED CONCRETE PIPE OR GAUGE OF CORRUGATED STEEL PIPE OR TYPE 2 CORRUGATED ALUMINUM PIPE UNDER FILL AND THE METHOD OF BACK-FILLING. THE MINIMUM GAUGE FOR CORRUGATED STEEL PIPE ALLOWED UNDER BIBB COUNTY STANDARDS IS 12 (0.109 INCHES). ALL CORRUGATED STEEL PIPES ARE TO BE FULLY COATED. THE MINIMUM GAUGE FOR TYPE 2 CORRUGATED ALUMINUM PIPE UNDER BIBB COUNTY STANDARDS IS 14 GAUGE (0.075 INCHES).

FIELD JOINTS FOR CORRUGATED PIPE SHALL BE MADE WITH BANDS OF THE SAME BASE METAL AND COATING AS THE CORRUGATED PIPE. BANDS SHALL BE OF THE HUGGER TYPE DESIGNED TO FULLY ENGAGE AT LEAST ONE ANNULAR CORRUGATION AT THE END OF EACH CORRUGATED PIPE AROUND ITS ENTIRE CIRCUMFERENCE. MINIMUM BAND WIDTH SHALL EQUAL THE CENTERLINE LENGTH OF FOUR (4) ANNULAR CORRUGATIONS. BANDS SHALL CONFORM TO CURRENT ASTM/AASHTO INDUSTRY STANDARDS AS TO SECURING BOLTS, THEIR NUMBER AND PLACEMENT.

CONCRETE PIPE SECTIONS MAY BE JOINED WITH BITUMINOUS PLASTIC CEMENT JOINTS, RUBBER-TYPE GASKET JOINTS, O-RING GASKET JOINTS OR PRE-FORMED PLASTIC GASKET JOINTS. IN BITUMINOUS PLASTIC CEMENT JOINTS, THE ANNULAR SPACE SHALL BE FILLED WITH JOINT MATERIAL AND THE INSIDE OF EACH JOINT WIPED SMOOTH. RUBBER-TYPE, O-RING AND PRE-FORMED PLASTIC GASKET JOINTS SHALL BE INSTALLED IN ACCORDANCE WITH THE MANUFACTURE'S RECOMMENDATIONS.

ALL CATCH BASINS, DROP INLETS OR OTHER DRAINAGE STRUCTURES SHALL COMPLY WITH THE LATEST STANDARDS APPROVED AND PROMULGATED BY THE GEORGIA DEPARTMENT OF TRANSPORTATION IN "STANDARDS SPECIFICATIONS FOR

CONSTRUCTION OF ROADS AND BRIDGES", LATEST EDITION. WATER QUALITY CONTROL DEVICES TO BE INSTALLED ONLY AFTER SITE IS COMPLETELY STABILIZED AND TEMPORARY SEDIMENT FILTER AND ACCUMULATED SEDIMENT IS REMOVED

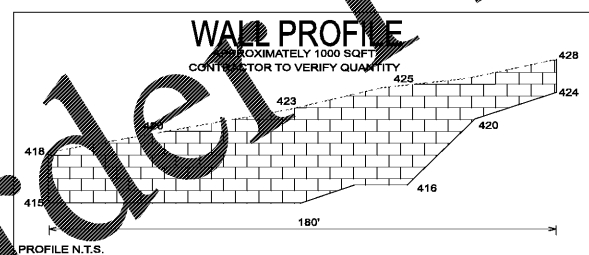
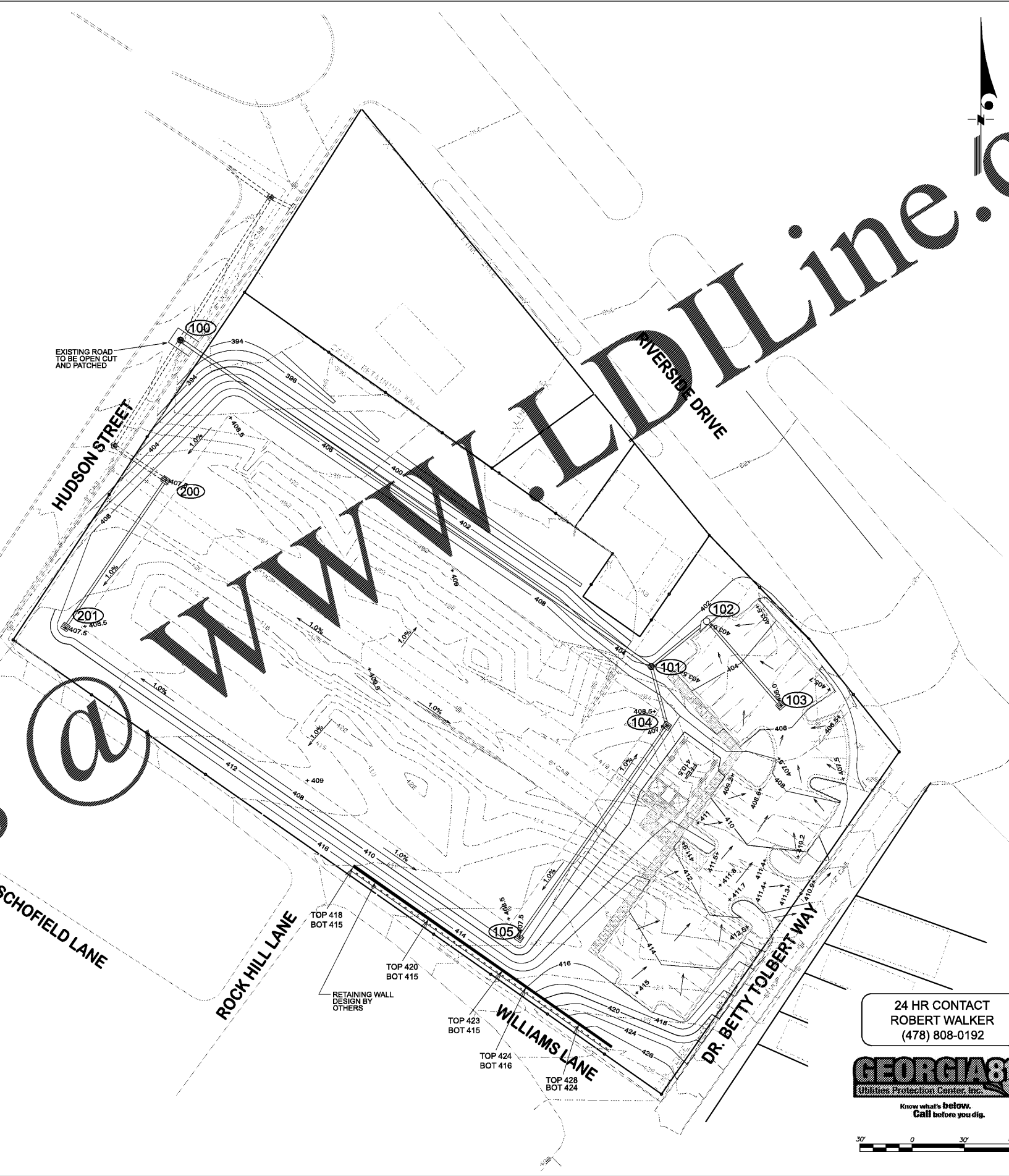
EARTHEN FILL SHALL BE CL OR ML MATERIAL APPROVED FOR USE BY GEOTECHNICAL ENGINEER (FE) AND PLACED IN 6" LIFTS AND COMPACTED TO NOT LESS THAN 95% STANDARD PROCTOR UNDER SAID ENGINEER'S DIRECTION

USE OF HDPE REQUIRES THE FOLLOWING*

- GRANULAR BACKFILL TO THE TOP OF THE PIPE
- DEPTHS NO GREATER THAN 10 FT AS MEASURED TO THE INVERT OF THE PIPE
- INSTALLATION MUST BE OUTSIDE COUNTY R/W
- WATERTIGHT BELL AND SPIGOT GASKET JOINTS MUST BE PROVIDED
- 36" DIA OR GREATER MUST BE INSPECTED AND CERTIFIED BY A GEO-TECHNICAL ENGINEER OR A MANUFACTURERS REPRESENTATIVE
- SMOOTHBORE PIPE ONLY

ALL STORMWATER INFRASTRUCTURES ON THIS SITE ARE PRIVATELY OWNED, AND ANY MAINTENANCE OR REPLACEMENT IS THE OWNER'S RESPONSIBILITY.

SUBMIT AS-BUILT DRAWING OF DAMWALLS, OUTLET CONTROL STRUCTURES AND STORM DRAIN PIPE SYSTEM TO BIBB SWM. ALL AS-BUILT SURVEYS OF STORMWATER INFRASTRUCTURES MUST BE SUBMITTED TO BIBB COUNTY STORMWATER MANAGEMENT PRIOR TO FINAL PLAT APPROVAL, OR PRIOR TO THE ISSUANCE OF A CERTIFICATE OF OCCUPANCY FOR COMMERCIAL SITES. A TABLE LISTING THE STRUCTURE NAME, NORTHING, EASTING, PIPE MATERIAL, INVERT AND TOP ELEVATION FOR EACH STRUCTURE MUST BE INCLUDED ON THE AS-BUILT DRAWING SUBMITTED TO BIBB COUNTY STORMWATER MANAGEMENT. (NORTHING AND EASTINGS SHOULD BE BASED ON STATE PLANE COORDINATE SYSTEM). PROVIDE THE PROJECT LAND DISTURBANCE PERMIT (LDP) NUMBER ON THE AS-BUILT DRAWINGS.



24 HR CONTACT
ROBERT WALKER
(478) 808-0192



Macon-Bibb County
RECREATION DEPARTMENT
115 Willie Smokie Glover Drive
Macon, Georgia 31201
Contact: Mr. Reggie Moore, Director

**WISE AVE.
PARK**



300 Chestnut Center Blvd, Ste 325
Kennesaw, Georgia 30144
TEL: (770) 627-3590 FAX: (770) 627-3594

V&M Contact:
Paul 'Ken' Hammon, PE (770) 639-7797
KENTUCKY 606-248-6600 NORTH CAROLINA 828-253-2796
TENNESSEE 865-546-5800 SOUTH CAROLINA 864-574-4775
www.vaughnmelton.com
Copyright © 2015
All Rights Reserved



ARCHITECTURE-MASTER PLANNING-INTERIORS

3118 East Shadowlawn Ave, NE
Atlanta, Georgia 30305
TEL: (404) 773-2826

email: david@schroeder-architects.com



Project Name: WISE AVENUE PARK
Project Number:
Drawn By: Ck'd By:
Date: Scale: As shown

Rev.	Description:	Date:
1.	SUBMITTED TO COUNTY	11/16/17
2.	REVISED PER COUNTY COMMENTS	03/12/18

**GRADING &
DRAINAGE PLAN**

C-08

Order Plans @