

THE FOLLOWING MATERIALS MAY BE USED FOR ALL OF THE ABOVE PAVEMENT SECTIONS:

- o ASPHALTIC CONCRETE WEARING SURFACE, 9.5 MM SUPERPAVE (TYPE II)
- o ASPHALTIC CONCRETE BINDER, 19 MM SUPERPAVE
- o CRUSHED STONE GRADED AGGREGATE BASE COURSE, SECTION 815, PAGE 969.
- o PORTLAND CEMENT CONCRETE PAVEMENT, SECTION 430, PAGE 294

THE ABOVE REFERENCED SPECIFICATIONS ARE FROM THE STATE OF GEORGIA "GUIDELINES FOR SUPERPAVE AND OTHER MIX TYPES SELECTION" DATED JANUARY 30, 2006 AND THE STATE OF GEORGIA STANDARD SPECIFICATIONS CONSTRUCTION OF TRANSPORTATION SYSTEMS, 2001 EDITION.

ABOVE PAVING SPECS ARE FROM THE GEOTECHNICAL REPORT, BUT MAY BE ALTERED BY THE GEOTECH BASED ON ENCOUNTERED FIELD CONDITIONS.

NO COLD JOINTS SHALL BE PERMITTED DURING PAVING OPERATIONS. COORDINATE WITH GEOTECH

THE COMPACTION, QUALITY AND GRADATION OF THE GAB CRUSHED STONE BASE WILL DIRECTLY AFFECT THE QUALITY AND LIFE OF THE PAVEMENT SECTION. CONSEQUENTLY, A MINIMUM COMPACTION OF 98 PERCENT OF THE MAXIMUM DRY DENSITY FOR THE GAB CRUSHED STONE MATERIAL AS DETERMINED BY EITHER THE MODIFIED PROCTOR COMPACTION TEST (ASTM D 1557, METHOD D) OR THE MODIFIED AASHTO (T-180), IS RECOMMENDED.

A SOILS ENGINEERING TECHNICIAN WORKING UNDER THE DIRECTION OF A GEOTECHNICAL ENGINEER SHOULD OBSERVE PLACEMENT AND COMPACTION OF THE BASE COURSE MATERIAL AND PERFORM DENSITY TESTS TO CONFIRM THAT THE MATERIAL HAS BEEN PLACED IN ACCORDANCE WITH THE RECOMMENDATIONS.

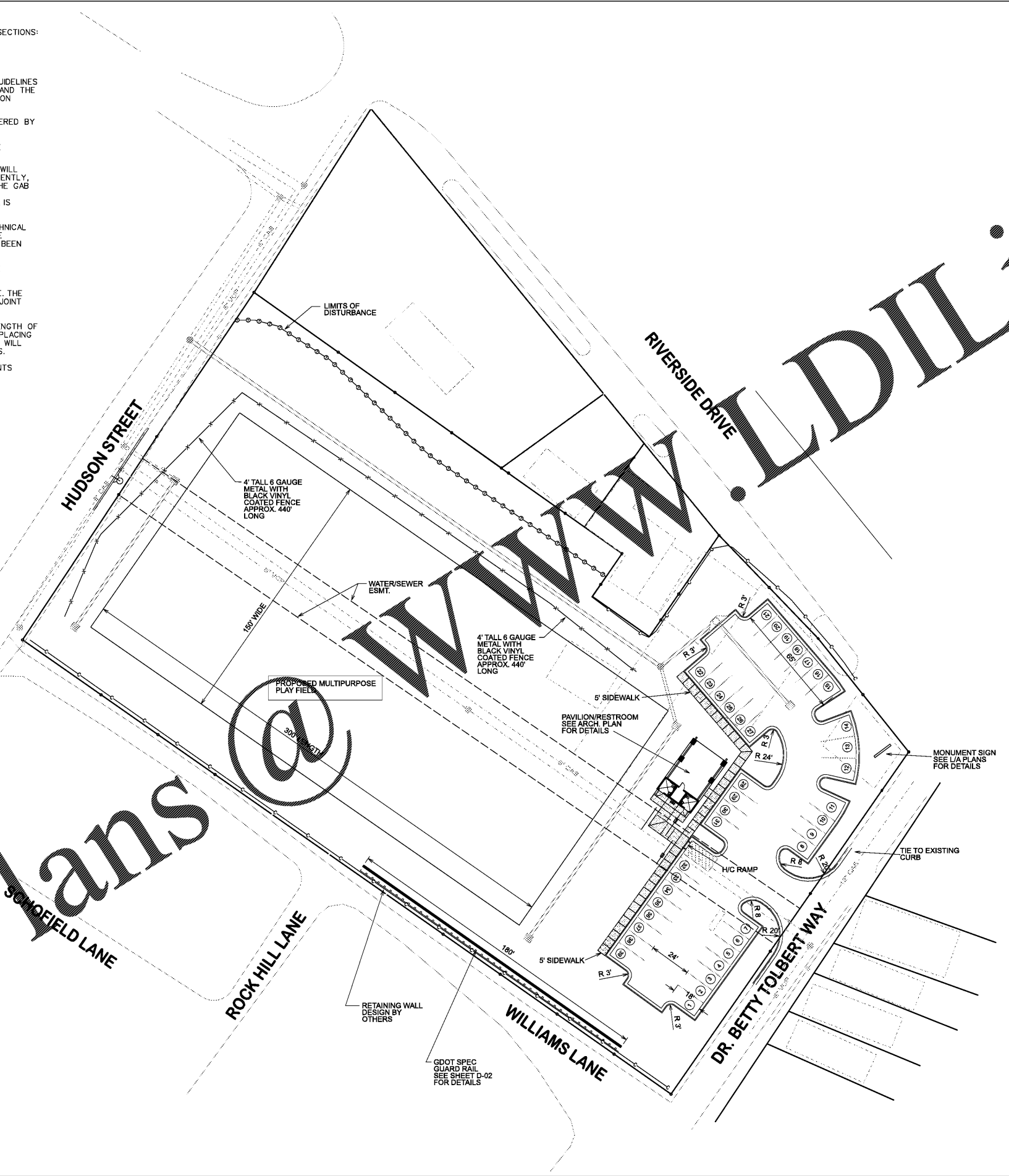
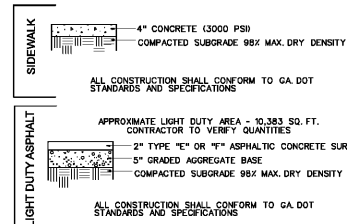
GAB MATERIALS SHOULD EXTEND AT LEAST 2 FEET HORIZONTALLY BEYOND THE PLANNED PAVEMENT EDGES.

THE CONCRETE PAVEMENT SHOULD HAVE THE MINIMUM THICKNESS LISTED ABOVE. THE PAVEMENT SHOULD INCLUDE TEMPERATURE REINFORCEMENT AND HAVE MAXIMUM JOINT SPACING AS RECOMMENDED BY ACI.

THE CONCRETE PAVEMENT SHOULD HAVE A MINIMUM 28-DAY COMPRESSIVE STRENGTH OF 4,000 POUNDS PER SQUARE INCH (PSI) WITH A MODULUS RUPTURE OF 630 PSI. PLACING THE 4-INCH CRUSHED STONE BASE COURSE BENEATH THE CONCRETE PAVEMENT WILL PREVENT THE PUMPING OF THE SOIL FINES THROUGH THE CONSTRUCTION JOINTS.

IN ALL CONCRETE PAVING AREAS, THERECOMMENDED SPACING OF EXPANSION JOINTS SHALL BE 75' MAX AND FOR CONTROL JOINTS TO BE 15' MAX, EACH WAY.

PAVING SECTIONS



Order Plans

WWW.LDILine.com



MACON-BIBB COUNTY
RECREATION DEPARTMENT
115 Willie Smokie Glover Drive
Macon, Georgia 31201
Contact: Mr. Reggie Moore, Director

**WISE AVE.
PARK**

V&M
Vaughn & Melton
Consulting Engineers, Inc.
Engineering - Surveying

300 Chestnut Center Blvd, Ste 325
Kennesaw, Georgia 30144
TEL: (770) 627-3590 FAX: (770) 627-3594

V&M Contact:
Paul 'Ken' Hammon, PE (770) 639-7797
KENTUCKY NORTH CAROLINA
606-248-6600 828-253-2796
TENNESSEE SOUTH CAROLINA
865-546-5800 864-574-4775
www.vaughnmelton.com
Copyright © 2015
All Rights Reserved

Schroeder Architects

ARCHITECTURE-MASTER PLANNING-INTERIORS

3118 East Shadowlawn Ave, NE
Atlanta, Georgia 30305
TEL: (404) 773-2826

email: david@schroeder-architects.com



Project Name: WISE AVENUE PARK
Project Number:
Drawn By: Ck'd By:
Date: Scale: As shown

Rev.	Description:	Date:
1.	SUBMITTED TO COUNTY	11/16/17
2.	REVISED PER COUNTY COMMENTS	03/12/18

24 HR CONTACT
ROBERT WALKER
(478) 808-0192



Know what's below.
Call before you dig.



**OVERALL
SITE PLAN**

C-02