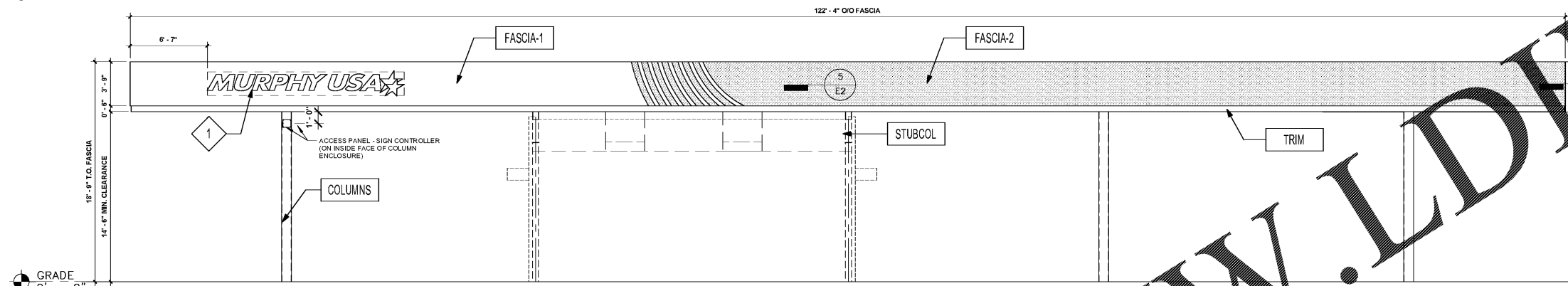
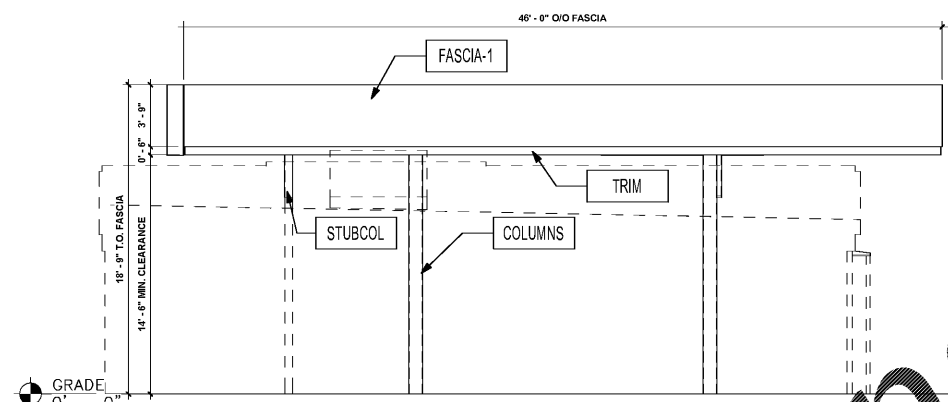


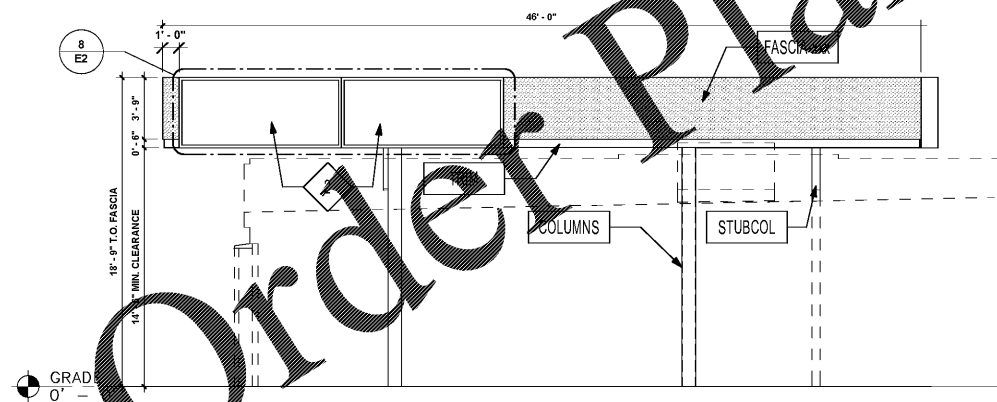
1 FRONT ELEVATION NORTH
3/16" = 1'-0"



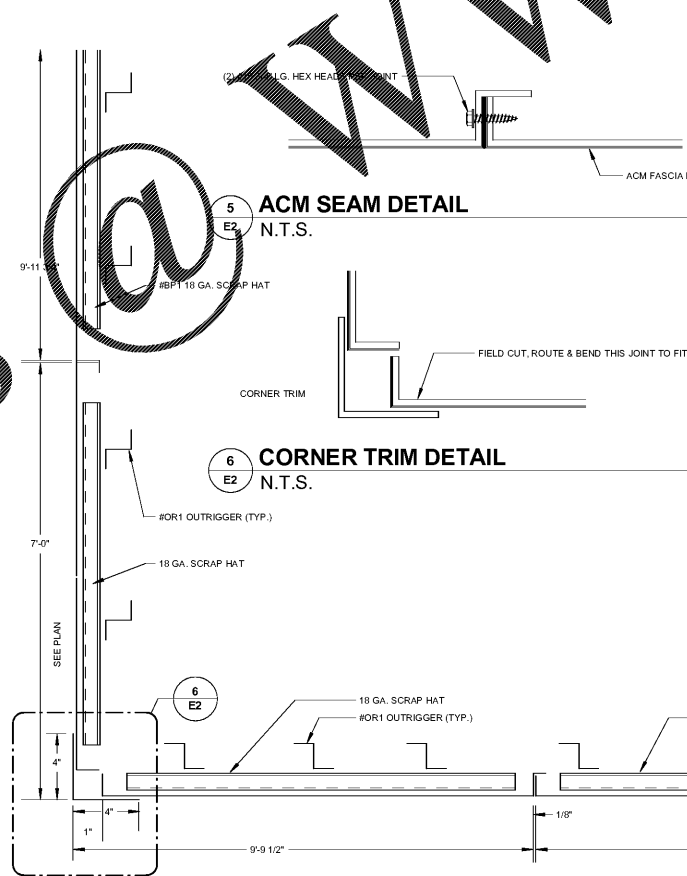
2 REAR ELEVATION SOUTH
3/16" = 1'-0"



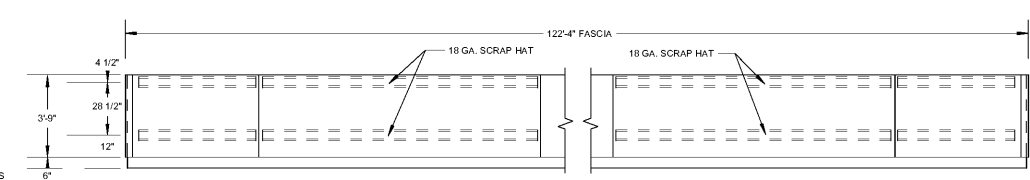
3 RIGHT ELEVATION WEST
3/16" = 1'-0"



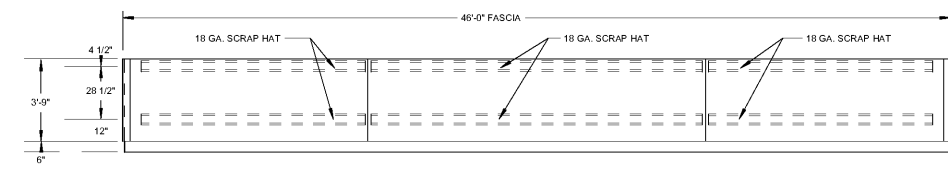
4 LEFT ELEVATION EAST
3/16" = 1'-0"



9 SECTION 'E' - CORNER FASCIA DETAIL (TYP.)
1/4" = 1'-0"



7 SIGN SUPPORT DETAIL - ELEVATIONS 1 & 2
N.T.S.



8 SIGN SUPPORT DETAIL - ELEVATIONS 3 & 4
N.T.S.

NOTE: ACTUAL SIGN LOCATIONS ARE SITE SPECIFIC AND SUBJECT TO CHANGE. SIGN SUPPORTS ARE PROVIDED AT EACH CORNER.

KEYED NOTES

- 1 MURPHY LOGO SIGN FURNISHED BY FMS INSTALLED BY FMS, SIGNAGE = 33.5 SQ. FT. EACH
- 2 CANOPY PRICE SIGNS FURNISHED AND INSTALLED BY OTHERS IN THE FIELD. CANOPY DESIGNED TO SUPPORT SIGNAGE AT ALL CORNERS

FINISH SCHEDULE

ITEM	DESCRIPTION	FINISH	INSTALLATION
FASCIA-1	ACM (ALUMINUM COMPOSITE MATERIAL)	ACM FASCIA "BRUSHED ALUMINUM"	FURNISHED & INSTALLED BY FMS
FASCIA-2	ACM (ALUMINUM COMPOSITE MATERIAL)	ACM FASCIA "PMS 285C"	FURNISHED & INSTALLED BY FMS
TRIM	20 GA. SHEET METAL	6" MIT PRE-FINISHED METAL ACCENT BAND "PURE WHITE" SW #705	FURNISHED & INSTALLED BY FMS
COLUMNS	SEE STRUCTURAL DRAWINGS	PAINTED "DORMER BROWN" SW #7521	FURNISHED & INSTALLED BY FMS PAINTED BY SITE CONTRACOR IN FIELD
STUBCOLUMNS	SEE STRUCTURAL DRAWINGS	PAINTED "DORMER BROWN" SW #7521	FURNISHED & INSTALLED BY FMS PAINTED BY SITE CONTRACOR IN FIELD

PROFESSIONAL SEAL



PROFESSIONAL IN CHARGE

SUSAN NELSON KOUGIUS
PROJECT MANAGER: JOHN NASHED
QUALITY CONTROL: CHRIS CERBO
DRAWN BY: SAMUEL VANORA

PROJECT NAME



MURPHY OIL FUEL FACILITY CANOPY
508 SC - 72

GREENWOOD, SC 29646



1801 Rockdale Industrial Blvd.
Conyers, Georgia 30012
Voice: (800) 366-6385
Fax: (770) 483-6037
FMS JOB NUMBER: G18ML00026
FMS MODEL NUMBER: XXXXXX

PROJECT NUMBER
20170844.0

SHEET TITLE

ELEVATIONS

SHEET NUMBER

E2