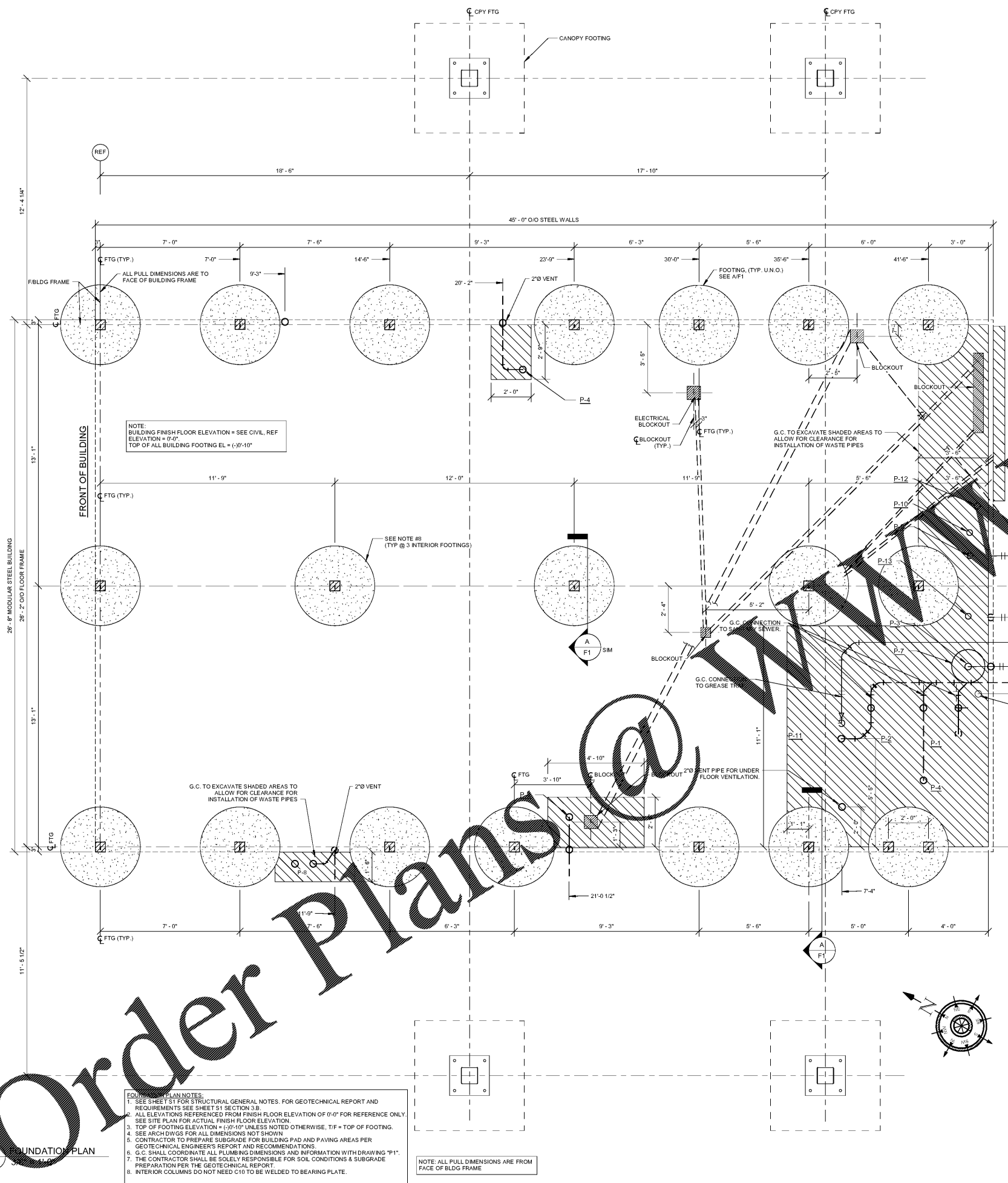
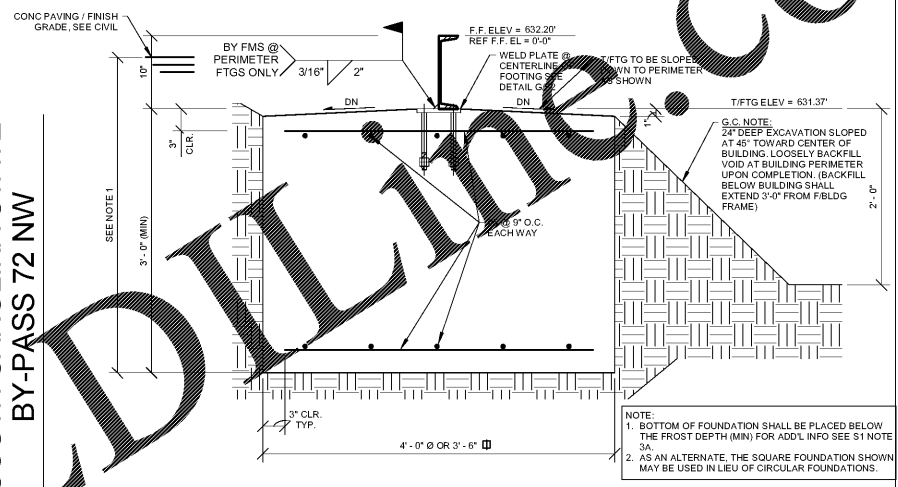


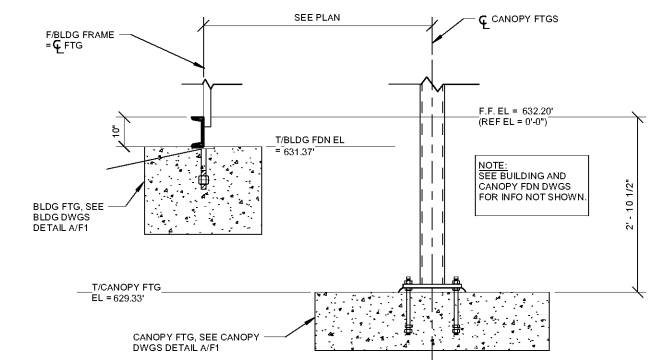
<b>BUILDING</b>	632'-2.38"	632.20'
FINISHED FLOOR EL =		(SEE CIVIL)
<b>BUILDING</b>	631'-4.38"	631.37'
TOP OF FOOTING (T/FTG) EL =		(TYPICAL)
<b>CANOPY</b>	629'-4"	629.33'
TOP OF FOOTING (T/FTG) EL =		(TYPICAL)



SOUTH CAROLINA STATE  
BY-PASS 72 NW



**A** FOOTING DETAIL  
1" = 1'-0"



**B** BLDG/CPY FTG DETAIL  
1" = 1'-0"



DO NOT USE THIS  
DRAWING FOR  
CONSTRUCTION UNLESS  
APPROVED BY BSA IN THE  
SPACE BELOW.  
DATE:  
NAME:  
SIGNED:

**BAKER, INGRAM, & ASSOCIATES**  
STRUCTURAL ENGINEERS

TWO WHITE HORSE PIKE HADDON HEIGHTS, NJ 08035  
(856) 310-1491 fax: (856) 310-1829

**PROFESSIONAL SEAL**



**PROFESSIONAL IN CHARGE**

K. NOLAN  
**PROJECT MANAGER**  
M. YOUNG  
**QUALITY CONTROL**  
B. McGLADE  
**DRAWN BY**  
D. MAHONEY

**PROJECT NAME**



**MURPHY OIL  
CONVENIENCE  
STORE**  
508 SC - 72

GREENWOOD, SC 29646



1801 Rockdale Industrial Blvd.  
Conyers, Georgia 30012  
Voice: (800) 368-6385  
Fax: (770) 483-8037  
PFS JOB NUMBER  
G1XMXXXX  
PFS MODEL NUMBER  
XXXXXX

**PROJECT NUMBER**  
20170844.0

**SHEET TITLE**

**FOUNDATION PLAN**

**SHEET NUMBER**

**F1**

PROTO V3.0 01/03/2017

Order Plans @ [www.greenwoodplans.com](mailto:www.greenwoodplans.com)

- FOOTING/FOUNDATION PLAN NOTES:**
- SEE SHEET S1 FOR STRUCTURAL GENERAL NOTES. FOR GEOTECHNICAL REPORT AND REQUIREMENTS SEE SHEET S1 SECTION 3.B.
  - ALL ELEVATIONS REFERENCED FROM FINISH FLOOR ELEVATION OF 0'-0" FOR REFERENCE ONLY. SEE SITE PLAN FOR ACTUAL FINISH FLOOR ELEVATION.
  - TOP OF FOOTING ELEVATION = +10'-10" UNLESS NOTED OTHERWISE, 1/4" = TOP OF FOOTING.
  - SEE ARCH DWGS FOR ALL DIMENSIONS NOT SHOWN.
  - CONTRACTOR TO PREPARE SUBGRADE FOR BUILDING PAD AND PAVING AREAS PER GEOTECHNICAL ENGINEERS REPORT AND RECOMMENDATIONS.
  - G.C. SHALL COORDINATE ALL PLUMBING DIMENSIONS AND INFORMATION WITH DRAWING "P1".
  - THE CONTRACTOR SHALL BE SOLELY RESPONSIBLE FOR SOIL CONDITIONS & SUBGRADE PREPARATION PER THE GEOTECHNICAL REPORT.
  - INTERIOR COLUMNS DO NOT NEED C10 TO BE WELDED TO BEARING PLATE.

NOTE: ALL PULL DIMENSIONS ARE FROM FACE OF BLDG FRAME