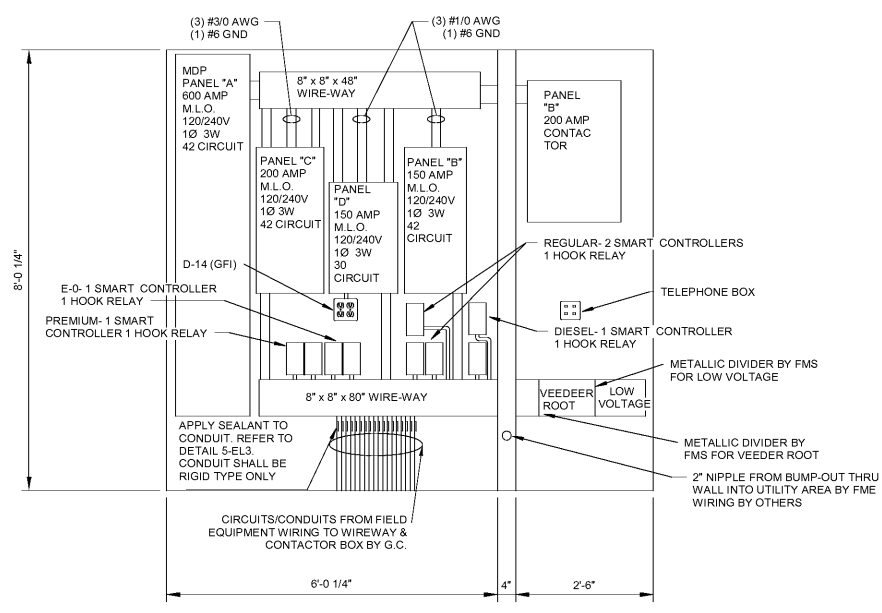


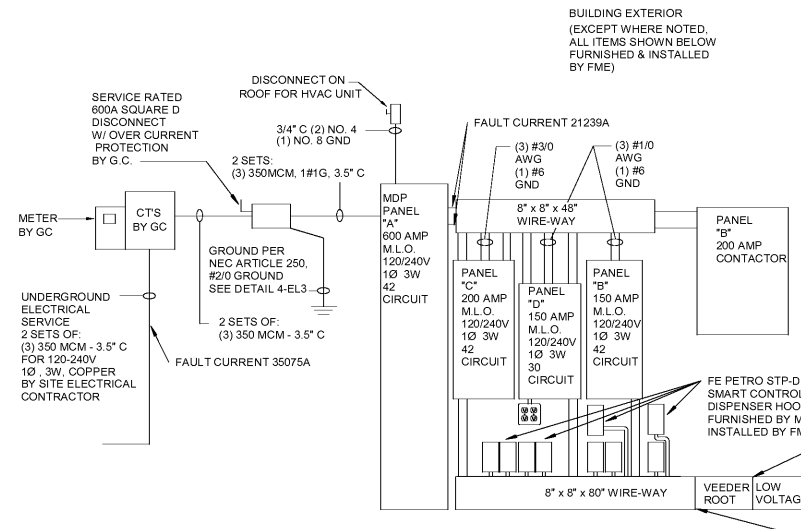
COPYRIGHT NOTICE
This drawing is the property of the above referenced firm and is not to be used for any purpose other than the specific project and site named herein, without the express written permission from the above firm.

ISSUE RECORD

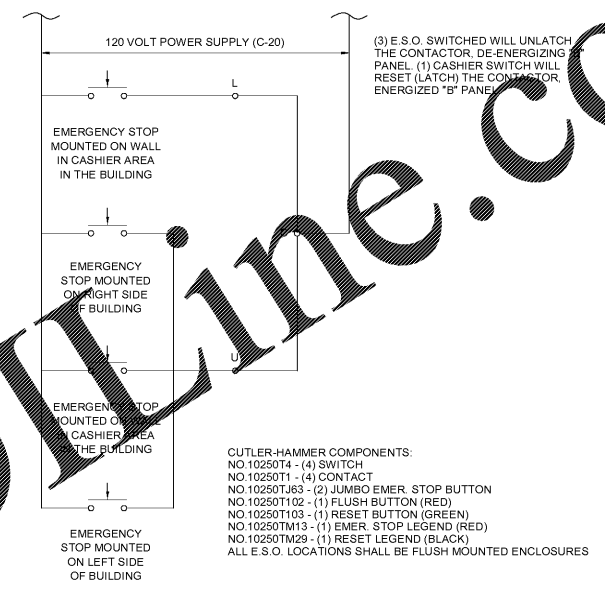
DATE	REV.	DESCRIPTION	PERMIT SUBMISSION SET
03/29/18			



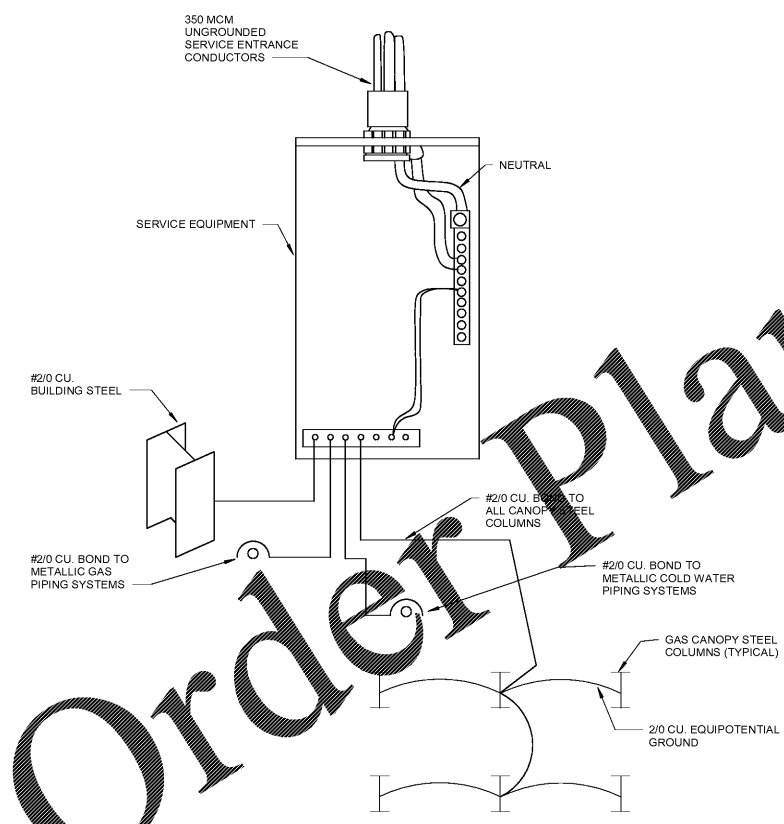
1 ELECTRICAL PANEL ELEVATION
EL3
1/2" = 1'-0"



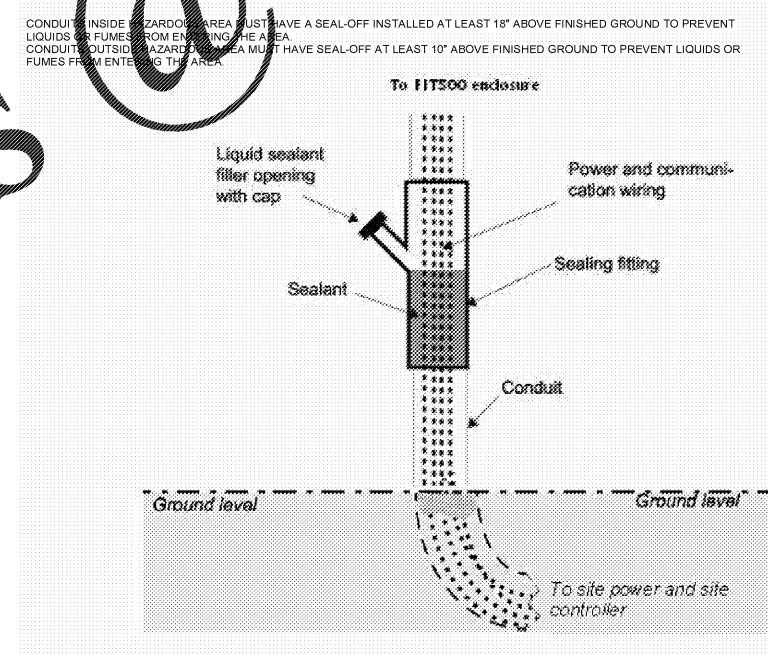
2 ONE LINE RISER DIAGRAM
EL3
NOT TO SCALE



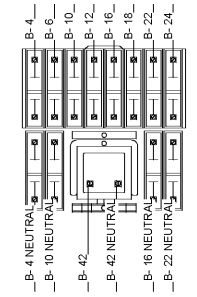
3 EMERGENCY SHUT-DOWN CIRCUITRY
EL3
NOT TO SCALE



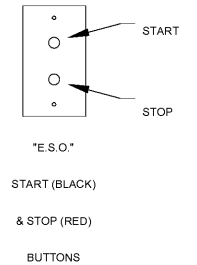
4 GROUND DETAIL
EL3
1/2" = 1'-0"



5 CONDUIT SEAL OFF DETAIL
EL3
NOT TO SCALE



6 CONTACTOR DETAIL
EL3
NOT TO SCALE



7 CASHIER SWITCH DETAIL
EL3
NOT TO SCALE



PROFESSIONAL SEAL



03/29/2018

PROFESSIONAL IN CHARGE

ONDRE MAYUGA

PROJECT MANAGER

ONDRE MAYUGA

QUALITY CONTROL

ONDRE MAYUGA

DRAWN BY

GERARDO DUPLAN

PROJECT NAME

MURPHY OIL CONVENIENCE STORE
508 SC - 72

GREENWOOD, SC 29646

FREY MOSS STRUCTURE

1801 Rockdale Industrial Blvd.
Conyers, Georgia 30012
Voice: (800) 366-6385
Fax: (770) 483-6037
FMS JOB NUMBER
G18MU0025
FMS MODEL NUMBER
XXXXXX

PROJECT NUMBER
20170844.0

SHEET TITLE

ELECTRICAL DETAILS

SHEET NUMBER

EL3