

ISSUE RECORD

DATE	REV.	DESCRIPTION
03/29/2018		PERMIT SUBMISSION SET

PROFESSIONAL SEAL

MURPHY OIL

NO. 31204

3-27-18

PROFESSIONAL IN CHARGE
K NOLAN

PROJECT MANAGER
M YOUNG

QUALITY CONTROL
B McGLADE

DRAWN BY
D MAHONEY

PROJECT NAME

MURPHY OIL CONVENIENCE STORE

508 SC - 72

GREENWOOD, SC 29646

PROFESSIONAL IN CHARGE
K NOLAN

PROJECT MANAGER
M YOUNG

QUALITY CONTROL
B McGLADE

DRAWN BY
D MAHONEY

PROJECT NAME

MURPHY OIL CONVENIENCE STORE

508 SC - 72

GREENWOOD, SC 29646

PROFESSIONAL IN CHARGE
K NOLAN

PROJECT MANAGER
M YOUNG

QUALITY CONTROL
B McGLADE

DRAWN BY
D MAHONEY

PROJECT NAME

MURPHY OIL CONVENIENCE STORE

508 SC - 72

GREENWOOD, SC 29646

PROFESSIONAL IN CHARGE
K NOLAN

PROJECT MANAGER
M YOUNG

QUALITY CONTROL
B McGLADE

DRAWN BY
D MAHONEY

PROJECT NAME

MURPHY OIL CONVENIENCE STORE

508 SC - 72

GREENWOOD, SC 29646

PROFESSIONAL IN CHARGE
K NOLAN

PROJECT MANAGER
M YOUNG

QUALITY CONTROL
B McGLADE

DRAWN BY
D MAHONEY

PROJECT NAME

MURPHY OIL CONVENIENCE STORE

508 SC - 72

GREENWOOD, SC 29646

PROFESSIONAL IN CHARGE
K NOLAN

PROJECT MANAGER
M YOUNG

QUALITY CONTROL
B McGLADE

DRAWN BY
D MAHONEY

PROJECT NAME

MURPHY OIL CONVENIENCE STORE

508 SC - 72

GREENWOOD, SC 29646

PROFESSIONAL IN CHARGE
K NOLAN

PROJECT MANAGER
M YOUNG

QUALITY CONTROL
B McGLADE

DRAWN BY
D MAHONEY

PROJECT NAME

MURPHY OIL CONVENIENCE STORE

508 SC - 72

GREENWOOD, SC 29646

PROFESSIONAL IN CHARGE
K NOLAN

PROJECT MANAGER
M YOUNG

QUALITY CONTROL
B McGLADE

DRAWN BY
D MAHONEY

PROJECT NAME

MURPHY OIL CONVENIENCE STORE

508 SC - 72

GREENWOOD, SC 29646

PROFESSIONAL IN CHARGE
K NOLAN

PROJECT MANAGER
M YOUNG

QUALITY CONTROL
B McGLADE

DRAWN BY
D MAHONEY

PROJECT NAME

MURPHY OIL CONVENIENCE STORE

508 SC - 72

GREENWOOD, SC 29646

PROFESSIONAL IN CHARGE
K NOLAN

PROJECT MANAGER
M YOUNG

QUALITY CONTROL
B McGLADE

DRAWN BY
D MAHONEY

PROJECT NAME

MURPHY OIL CONVENIENCE STORE

508 SC - 72

GREENWOOD, SC 29646

PROFESSIONAL IN CHARGE
K NOLAN

PROJECT MANAGER
M YOUNG

QUALITY CONTROL
B McGLADE

DRAWN BY
D MAHONEY

PROJECT NAME

MURPHY OIL CONVENIENCE STORE

508 SC - 72

GREENWOOD, SC 29646

PROFESSIONAL IN CHARGE
K NOLAN

PROJECT MANAGER
M YOUNG

QUALITY CONTROL
B McGLADE

DRAWN BY
D MAHONEY

PROJECT NAME

MURPHY OIL CONVENIENCE STORE

508 SC - 72

GREENWOOD, SC 29646

PROFESSIONAL IN CHARGE
K NOLAN

PROJECT MANAGER
M YOUNG

QUALITY CONTROL
B McGLADE

DRAWN BY
D MAHONEY

PROJECT NAME

MURPHY OIL CONVENIENCE STORE

508 SC - 72

GREENWOOD, SC 29646

PROFESSIONAL IN CHARGE
K NOLAN

PROJECT MANAGER
M YOUNG

QUALITY CONTROL
B McGLADE

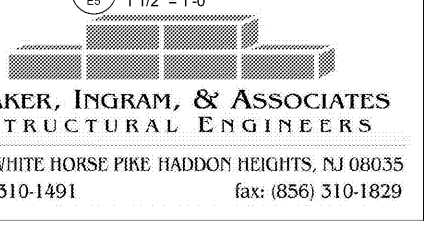
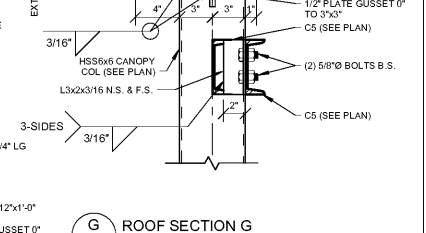
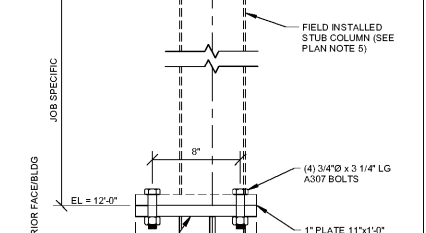
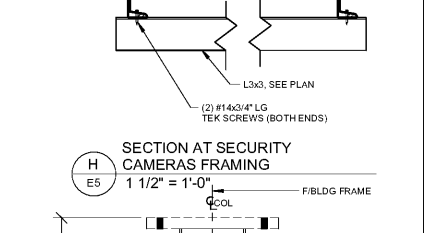
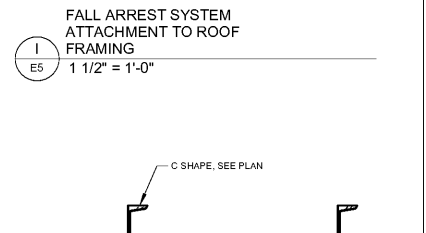
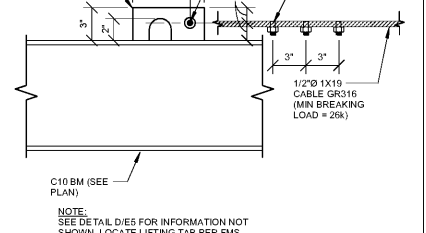
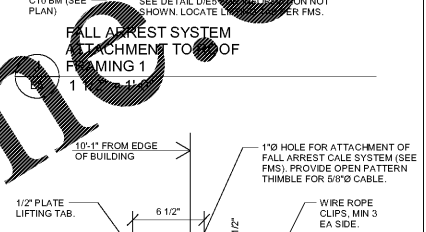
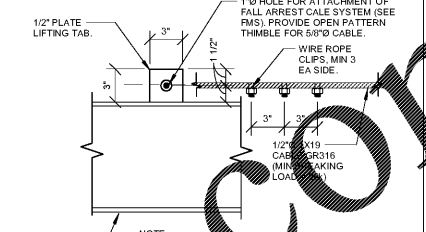
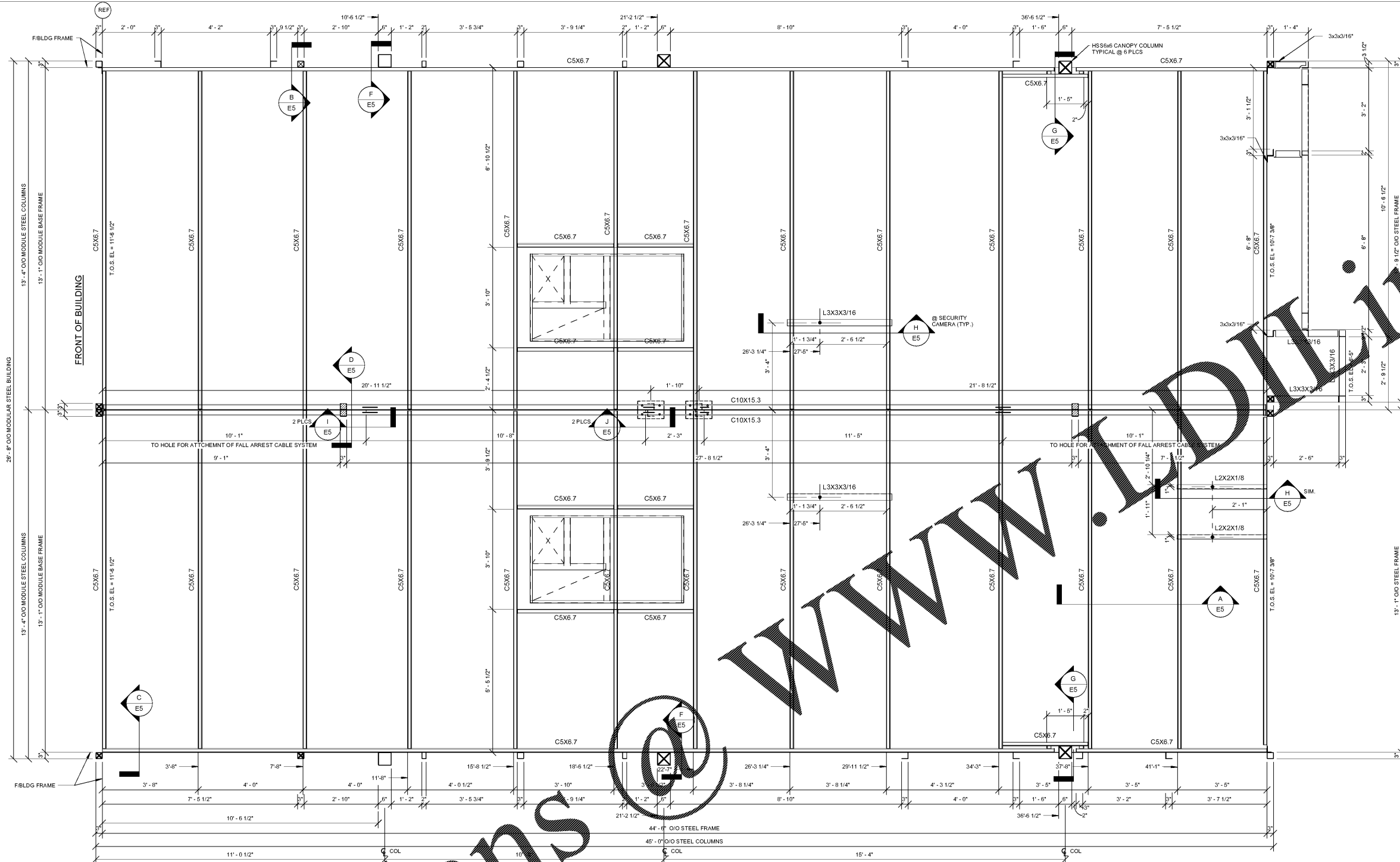
DRAWN BY
D MAHONEY

PROJECT NAME

MURPHY OIL CONVENIENCE STORE

508 SC - 72

GREENWOOD, SC 29646



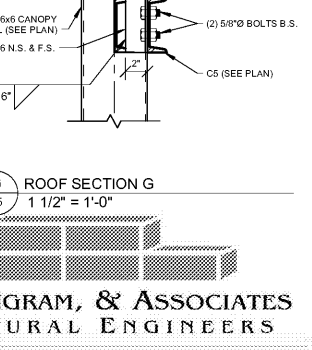
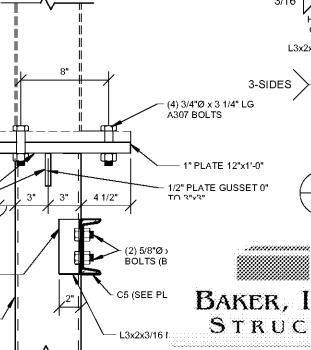
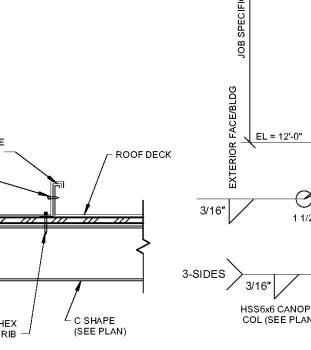
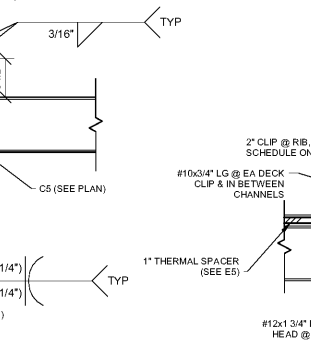
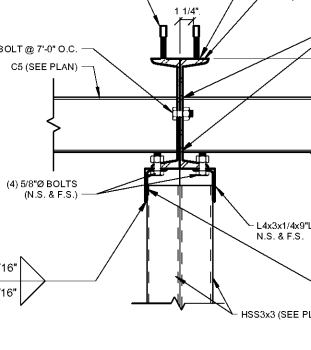
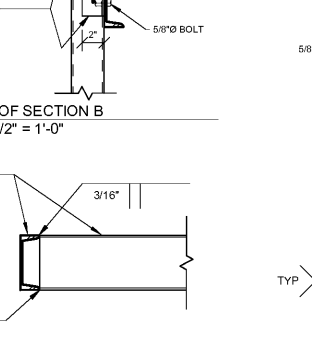
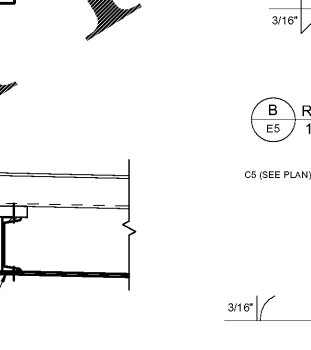
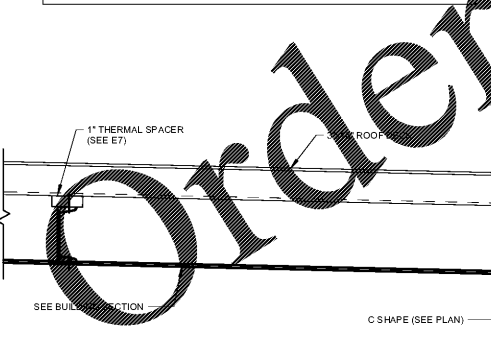
1 ROOF FRAMING PLAN
1/2" = 1'-0"

FRAMING PLAN NOTES:

- SEE SHEET(S) FOR STRUCTURAL GENERAL NOTES.
- ALL ELEVATIONS REFERENCED FROM FINISH FLOOR ELEVATION = 0'-0" FOR REFERENCE ONLY. SEE CIVIL FOR ACTUAL FINISH FLOOR ELEVATION.
- BOLTS SHALL BE 5/8"x1 1/2" LG. (M. BOLTS) (GRADE A307 U.B.O.).
- FOR ROOF DECK REQUIREMENTS, SEE SCHEDULE ON S1. (SEE E6 & E7 FOR ADD'L INFO).
- BOLTED STUB COLUMN EXTENSION ABOVE EL = 12'-0" ARE REQUIRED AT 4 LOCATIONS (TOTAL) AS SHOWN ON THE CANOPY FRAMING PLAN.

NOTE: ALL PULL DIMENSIONS ARE FROM FACE OF BLDG FRAME

- DENOTES HSS 3" X 3" CANOPY COLUMN
- DENOTES HSS 3" X 3" CANOPY COLUMN
- DENOTES HSS 3" X 3" CANOPY COLUMN
- DENOTES HSS 3" X 3" CANOPY COLUMN
- DENOTES HSS 3" X 3" CANOPY COLUMN
- DENOTES HSS 3" X 3" CANOPY COLUMN



A ROOF SECTION A
1 1/2" = 1'-0"

B ROOF SECTION B
1 1/2" = 1'-0"

C ROOF SECTION C
1 1/2" = 1'-0"

D ROOF SECTION D
1 1/2" = 1'-0"

E ROOF SECTION E
1 1/2" = 1'-0"

F ROOF SECTION F
1 1/2" = 1'-0"

G ROOF SECTION G
1 1/2" = 1'-0"

H ROOF SECTION H
1 1/2" = 1'-0"



BAKER, INGRAM, & ASSOCIATES
STRUCTURAL ENGINEERS

TWO WHITE HORSE PIKE HADDON HEIGHTS, NJ 08035
(856) 310-1491 fax: (856) 310-1829

ROOF FRAMING PLAN

SHEET NUMBER

E5

PROTO V3.0 01/03/2017