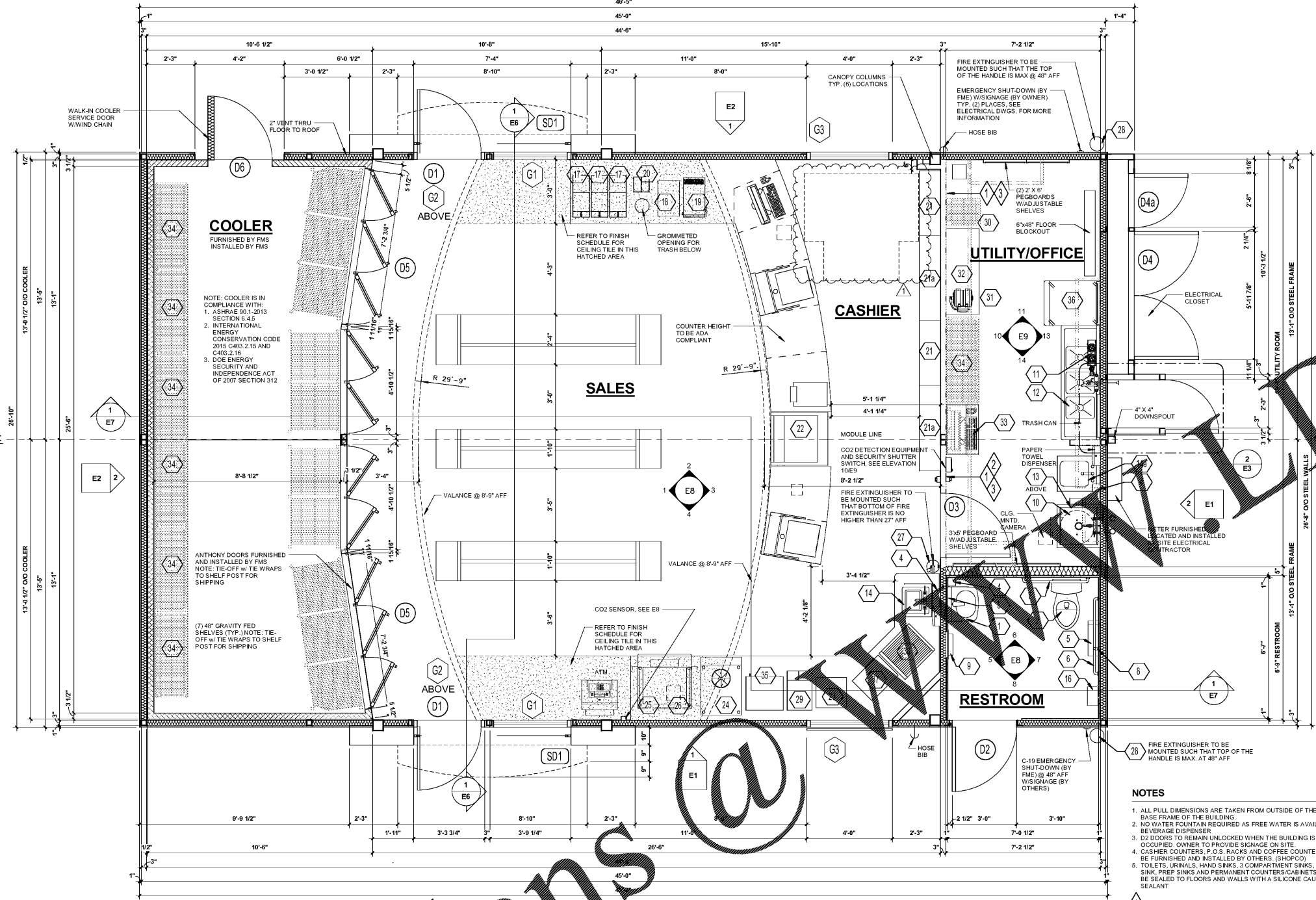


PROPERTY NOTICE
This drawing is the property of the above mentioned end is not to be used for any purpose other than the specific project and site named herein, without the written permission of GreenbergFarrow.

ISSUE RECORD

DATE	REV.	DESCRIPTION
02/17/2017		PERMIT SUBMISSION SET
02/28/2018	1	REVISED PERMIT SET

MARK	ITEM	DESCRIPTION	FURNISH	INSTALL
1	LAVATORY - ADA COMPLIANT	LAVATORY - ZURN #5350 19" x 17" CHINA WALL MOUNTED W/ NO BACK-SPLASH FAUCET - ZURN #29915-XL - AQUASENSE BATTERY POWERED	FMP	FMP
2	WATER CLOSET - ADA COMPLIANT	WATER CLOSET - ZURN #2-555-ELONGATED BOWL, TANK WITH LOCKING LID - ZURN #25335-4556TKMNL #6-155 18" x 38" FRAMELESS (OR EQUAL) 40" AFF TO BOTTOM OF REFLECTIVE SURFACE	FMP	FMP
3	MIRROR	GOJO HAND SOAP DISPENSER	FMS	FMS
4	SOAP DISPENSER	TOILET TISSUE DISPENSER	OTHERS	FMS
5	TOILET TISSUE DISPENSER	1 1/2" ROUND GRAB BAR, 3/4" A.F.F. TO CENTER OF BAR	FMS	FMS
6	42" GRAB BAR	1 1/2" ROUND GRAB BAR, 3/4" A.F.F. TO CENTER OF BAR	FMS	FMS
7	36" GRAB BAR	1 1/2" ROUND GRAB BAR, 3/4" A.F.F. TO CENTER OF BAR	FMS	FMS
8	18" GRAB BAR	1 1/2" ROUND GRAB BAR, 3/4" A.F.F. TO CENTER OF BAR	FMS	FMS
9	ELECTRIC HAND DRYER	XLERATOR MODEL # XL-BW, THERMOSTAT RESIN.	FMS	FMP
10	SERVICE MOP SINK	FIAT #8504A SERVICE SINK FAUCET @ 36" AFF.	FMP	FMP
11	WATER FILTERS	3M WATER FILTRATION SYSTEM AQUAPURE DP200	FMP	FMP
12	3-COMP SINK	ELKAY SSP - #K10X14-2-16X, 66" GREENWORLD W/ ZURN #22000-A1-PP1, FIRE-RINSE HOSE ASSEMBLY	FMP	FMP
13	WATER HEATER	1/2 GALLON RHEEM #E12A-9-G "POINT OF USE" 24" SINGLE PHASE, 9000 WATTS.	FMP	FMP
14	HAND SINK	@ BEVERAGE COUNTER WITH ADA COMPLIANT SHOPCO HANDLES	FMP	FMP
14a	HAND SINK	@ UTILITY ROOM WITH SPLASH MOUNT GOOSENECK FAUCET & BASKET TYPE	FMP	FMP
15	PURSE SHELF	20 GA. BRUSHED STAINLESS STEEL SHELF 4" X 1'-6"	FMS	FMS
16	COFFEE BREWER	(SEE INTERIOR ROOM SCHEDULE)	MURPHY	LEGACY
17	CAPPUCCINO MACHINE	BLANZ #26240 V.1.1 8 AMPS 9.5" W X 11" D X 20" H CUPPLY 2.0 2.0 PERMICO PULCINO ITEM MODEL PC4 CLUTCH 14 14 14 2.0 2.0 2.0 1000/15 AMP MA 5-15P 15P FLARE	MURPHY	LEGACY
18	CREAMER	FLAP CDS 2.0 2.0 2.0 LIQUID DISPENSER 22" L X 12" W X 12" H 120V/60 15P/14 AMP	MURPHY	LEGACY
19	CONDIMENT RACK	CONDIMENT RACK - THE LLB GROUP. 12" W X 12" H 120V/60 15P/14 AMP	MURPHY	LEGACY
20	TOBACCO MERCHANDISER	HARBOR INDUSTRIES - 3" WIDE	MURPHY	LEGACY
21	TOBACCO MERCHANDISER	HARBOR INDUSTRIES - 4" WIDE	MURPHY	LEGACY
22	OPEN AIR COOLER	BEVERAGE AIR OPEN AIR CURTAIN MERCHANDISER MODEL B213 115V/60/1 1/2 HP 15 AMP DEDICATED OUTLET 29 3/4" L X 32" D X 64" H	MURPHY	LEGACY
23	TRAY RACK	PASTRY RACK - PRABE COUNTRY BAKERY TIER RACK W/BRACKETS & HEADER #851 16.63" X 17" X 28"	MURPHY	LEGACY
24	ICE MACHINE	VIPER 3 BARREL ICE MACHINE 23" W X 32.5" D X 42" H 230V 14-15V/30 HZ/30 HZ/30	MURPHY	LEGACY
25	FOUNTAIN MACHINE & ICE BEVERAGE DISPENSER	LANCER CORP. FLAVOR SELECT F53NGT ICE BEVERAGE DISPENSER W/WATER, ADA COMPLIANT, 40 1/4" H X 35" W X 30.5" D, 115V/60/15P/7 AMPS	MURPHY	LEGACY
26	ICE MACHINE	FOLLETT HORIZON REMOTE TOP MOUNT ICE MACHINE MODEL# HCD1000RHT - SEE MECHANICAL DRAWINGS FOR CONDENSER	MURPHY	LEGACY
27	FIRE EXTINGUISHER	WALL HUNG FIRE EXTINGUISHER #10 CLASS ABC WITH UL RATING 4A-60BC. LOCATION TO BE CONFIRMED IN FIELD WITH LOCAL FIRE INSPECTOR.	MURPHY	GC
28	FIRE EXTINGUISHER	WALL HUNG FIRE EXTINGUISHER, ANSUL C20 25017	MURPHY	GC
29	FRUIT RACK	FOOD CONCEPTS FRESH FRUIT DISPLAY W/GRAPHIC HEADER 14" W X 22" D X 19.25" H, 0.025" BLACK ABS	MURPHY	GC
30	ICEE RACK	3 STACKED X ONE (1) BOX WIDE INCLINED 15" W X 19" D X 12" H E.A.	MURPHY	GC
31	WATER BOOSTER	SHURFLO INTERMITTENT WATER BOOSTER 117 PS1, 230V, 40 Hz, 1P 3PH OUTLET/INLET 1/2 HP, 8 AMPS 10" L X 10" W X 13" H	MURPHY	OTHERS
32	BIB RACK	BIB RACK 3 X 5 INCLINE RACK, PART #8518033510/PB1 FOR 10 FLOJET, PART #8518033510/PB2 FOR 20 FLOJET	MURPHY	LEGACY
33	MANAGER'S WORKSTATION DESK	2'-4" W X 1'-6" D X 6'-8" H	MURPHY	CBE
34	FOCUS WIRE SHELVING	18" D X 48" W X 63" H	MURPHY	LEGACY
35	STARBUCKS COOLER	ATC GROUP COUNTER TOP FREEZER #GT-100F 20 7/8" L X 19 1/2" D X 23 1/4" H, 115V/60 Hz, 1, 3 AMPS, 1.6 HP	MURPHY	GC
36	REFRIGERATOR	TURBO AIR MODEL #URF-19	MURPHY	GC
37	MICROWAVE	SHARP R-21 LVF, R-21 LTF MEDIUM DUTY COMMERCIAL MICROWAVE OVENS	MURPHY	LEGACY
38	HOT DOG ROLLER	GRILL MAX EXPRESS ROLLER GRILLS BY STAR MANUFACTURING WITH NEMCO HEAT & HOLD RETEMPERALIZATION DRAWER MODEL # 8430 AND NEMCO STAND MODEL # 8403-S1N	MURPHY	LEGACY



- NOTES**
- ALL PULL DIMENSIONS ARE TAKEN FROM OUTSIDE OF THE STEEL BASE FRAME OF THE BUILDING.
 - NO WATER FOUNTAIN REQUIRED AS FREE WATER IS AVAILABLE AT BEVERAGE DISPENSER.
 - D2 DOORS TO REMAIN UNLOCKED WHEN THE BUILDING IS OCCUPIED. OWNER TO PROVIDE SIGNAGE ON SITE.
 - CASHIER COUNTERS, P.O.S. RACKS AND COFFEE COUNTERS TO BE FURNISHED AND INSTALLED BY OTHERS (SHOPCO).
 - TOILETS, URINALS, HAND SINKS, 3-COMPARTMENT SINKS, MOP SINK, PREP SINKS AND PERMANENT COUNTERS/CABINETS MUST BE SEALED TO FLOORS AND WALLS WITH A SILICONE CAULK SEALANT.
- 1 STATE LABEL LOCATION
2 MFG. DATA PLATE LOCATION
3 3RD PARTY INSPECTION LABEL LOCATIONS

FLOOR PLAN
3/8" = 1'-0"

Order Plans @

GLASS SCHEDULE

MARK	SIZE	DESCRIPTION	QTY.
G1	3'-0" x 14'	1" TEMPERED, INSULATED GLASS W/2" X 4" CLEAR ANODIZED ALUMINUM SASH (LH-0388, SHGC=0.29, VT=0.70) DEL CPO ID #1-KAW-15354 BY KAWNEER - TRIFAB (T - OR EQUAL)	2
G2	3'-3" x 3'-4"	1" TEMPERED, INSULATED GLASS W/2" X 4" CLEAR ANODIZED ALUMINUM SASH (LH-0388, SHGC=0.29, VT=0.70) DEL CPO ID #1-KAW-15354 BY KAWNEER - TRIFAB (T - OR EQUAL)	2
G3	4'-0"	1" TEMPERED, INSULATED GLASS W/2" X 4" CLEAR ANODIZED ALUMINUM SASH (LH-0388, SHGC=0.29, VT=0.70) DEL CPO ID #1-KAW-15354 BY KAWNEER - TRIFAB (T - OR EQUAL)	2

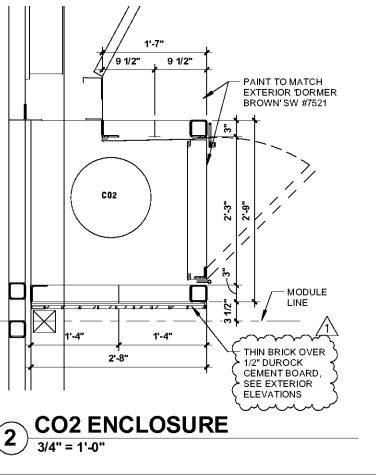
SECURITY DOOR SCHEDULE

MARK	SIZE	DESCRIPTION	QTY.
SD1	7'-5 3/4" x 9'-10 1/4"	• WHEATBELT INC. EX60 MOTORIZED COILING DOOR W/ SURFACE MOUNTED GUIDE RAILS AND CLEAR ANODIZED ALUMINUM SLATS (1) OUTSIDE KEY SWITCH & (1) INSIDE SWITCH - 9" SQUARE BOX (W/ HITE)	2

ROOM FINISH SCHEDULE

ROOM	FLOORING	INTERIOR WALLS	CEILING	CEILING HT.
CASHIER	PORCELAIN TILE-VERANDA LEATHER (#506) 20" X 20" W/ GROUT #188 NEW TAUPPE BY CUSTOM BUILDING PRODUCTS WITH JOHNSONITE 4" RUBBER COVE BASE #69 STERLING SILVER.	20 GA. STEEL PRE-FINISHED EMBOSSED WHITE ACRYLIC PANELS	WHITE ACM (FLAME SPREAD INDEX-0, SMOKE DEVELOPED-85)	9'-0"
REST ROOM	MARAZZI COLOR BODY PORCELAIN RIFLESSI DE LEGNO, UJON, 12"x24" WALNUT TILE W/ LATICRETE SPECTRALOCK GROUT #66 CHESTNUT BROWN	DALTILE MODEL #LV021212HD1P6 'CATALINA CANYON' 12" X 12" PORCELAIN TILE EP'OX GROUT TO UNDERSIDE OF CEILING - #188 NEW TAUPPE	WHITE ACRYLIC PANELS 20 GA. STEEL PRE-FINISHED EMBOSSED (BY OTHERS) (FLAME SPREAD INDEX-0, SMOKE DEVELOPED-85)	9'-0"
UTILITY	12" X 12" CHESTNUT BLENDED SLATE VINYL TILE MODEL #SS1217 BY TRAFFIC MASTER WITH JOHNSONITE 4" RUBBER COVE BASE #69 STERLING SILVER	20 GA. STEEL PRE-FINISHED EMBOSSED WHITE ACRYLIC PANELS	SHEETROCK BRAND CLAMPUS LAY-IN CEILING PANEL VINYL #3270 IN DOWN BRAND CE SUSPENDED CEILING 2' X 4' LAY-IN CEILING TILE WHITE GRID (FLAME SPREAD INDEX-25, SMOKE DEVELOPED-60)	9'-0"
SALES	PORCELAIN TILE-VERANDA LEATHER (#506) 20" X 20" W/ GROUT #188 NEW TAUPPE BY CUSTOM BUILDING PRODUCTS WITH JOHNSONITE 4" RUBBER COVE BASE #69 STERLING SILVER.	20 GA. STEEL PRE-FINISHED SMOOTH ACRYLIC PANELS	USG - RADAR #210 (CLASS-A FIRE RATED) IN SUSPENDED CEILING, WHITE ACM IN LOWER VALENCE (FLAME SPREAD INDEX-25, SMOKE DEVELOPED-60)	9'-6"
			ABOVE DRINK AND FOOD COUNTERS USE SHEETROCK BRAND CLAMPUS LAY-IN CEILING PANEL VINYL #3270 IN DOWN BRAND CE SUSPENDED CEILING 2' X 4' LAY-IN CEILING TILE WHITE GRID (FLAME SPREAD INDEX-25, SMOKE DEVELOPED-60)	9'-6"
COOLER	SW-ARMORSEAL 1000 HS #67 A 2001 AND #67 V 2002) DARK GREY SEALER CONCRETE	20 GA. STEEL PRE-FINISHED EMBOSSED WHITE ACRYLIC PANELS (FLAME SPREAD INDEX-0, SMOKE DEVELOPED-85)	WHITE ACRYLIC PANELS 20 GA. STEEL PRE-FINISHED EMBOSSED (BY OTHERS) (FLAME SPREAD INDEX-0, SMOKE DEVELOPED-85)	9'-0"

NOTE: THE CEILING GRID/TILES ARE TO BE INSTALLED PER ASTM C635, C636 AND E880 IN ACCORDANCE WITH THE SEISMIC DESIGN CATEGORY LISTED ON DWG 51.



DOOR SCHEDULE

MARK	SIZE	DESCRIPTION	QTY.
D1	3'-0" x 7'-0"	3070 INSULATED NARROW STILE ALUMINUM CLEAR ANODIZED FINISH WITH GRAY TRINTED 1" SAFETY GLASS, CLEAR ANODIZED FINISH INTERIOR AND PULL HANDLE (EXTERIOR), ADAMS RITE #1850-A-506 LOCK W/ BEST ACCESS CYLINDER EXTERIOR & ADA TURN LEVER RELEASE INTERIOR. PEMKO #229A HALF SADDLE ALUMINUM THRESHOLD 1/2" X 36" X 5", 1 1/2" PAIR 4 1/2" X 4 1/2" B.B. BUTT HINGES W/ N.R.P. PUSH SIDE MOUNT CLOSURE - LON #4021 & #20-10 DROP PLATE CLEAR FINISH, DOOR SWEEP @ BOTTOM, PAINT INTERIOR WHITE TO MATCH, & EXTERIOR TO MATCH (STORE FRONT GLASS DOOR WITH G2) GLASS ABOVE DOOR; W/ WIND CHAINS, BOTTOM RAIL OF DOOR TO BE 10" HIGH - 1/2" SOLTA, SHGC=0.15, VT=0.70, IMMOBIL. GPO ID #1P-KAW-10923 - CRUSA, 3500W - 87 KAWNEER OR EQUAL	(2) 1 RH 1 LH
D2	3'-0" x 7'-0"	3070 INSULATED METAL DOOR W/ FRAME - HAGER #055 PUSH @ 15" OR EQUAL PLATE INSIDE, HAGER # 316 PULL (R) OR EQUAL HANDLE EXTERIOR; ROCKWOOD CAST DOOR PULL #1515020 OR EQUAL INTERIOR PULL, KEYS DEADBOLT W/ BEST CORE LOCK & ADA TURN LEVER ON THE INTERIOR (CONSTRUCTION CORE) #0377K CS TUBULAR DEADBOLT, 1 1/2" PAIR 4 1/2" x 4 1/2" B.B. PRIMED BUTT HINGES W/ N.R.P. LON #4021 PUSH SIDE MOUNT CLOSURE, FULL LENGTH ASTRAGAL, 102X3" STAINLESS STEEL KICK PLATE ON INTERIOR; PEMKO #229A HALF SADDLE ALUMINUM THRESHOLD 1/2" X 36" X 5", DOOR SWEEP @ BOTTOM, PAINT INTERIOR SW SEMI-GLOSS WHITE TO MATCH, & EXTERIOR TO MATCH, W/ WIND CHAINS (R-VALUE = 2.65)	1 RH
D3	3'-0" x 7'-0"	3070 SOLID WOOD DOOR W/ FRAME - PAINT GRADE - PUSH/PULL W/ DEAD BOLT W/ ADA TURN LEVER LOCK (OFFICE SIDE), 1 1/2" PAIR 4 1/2" x 4 1/2" B.B. PRIMED BUTT HINGES W/ N.R.P. 102X3" STAINLESS STEEL KICK PLATE ON BOTH SIDES, PAINTED SW SEMI-GLOSS WHITE ON BOTH SIDES, (ONE RIGHT HAND SWING)	1 RH
D4	3'-0" x 8'-0"	(3080) 1 3/4" HOLLOW METAL DOORS - BEST LOCK #0377K CS TUBULAR DEADBOLT ON ACTIVE LEAF ONLY) SLIDE BOLT @ BOTTOM (INACTIVE LEAF ONLY), SPRING LOADED BARREL BOLT @ TOP & BOTTOM (ON INACTIVE LEAF)	(2) 1 RH 1 LH
D4a	2'-6" x 8'-0"	(2680) 1 3/4" HOLLOW METAL DOOR, SEE D4 ABOVE FOR SPECIFICATIONS & HARDWARE W/ WIND CHAINS	1 LH
D5	28" x 79"	ANTHONY REACH-IN COOLER DOORS (BRUSHED CHROME) FURNISHED BY OTHERS & INSTALLED BY FMS	10
D6	3'-0" x 6'-6"	COOLER DOOR BY KASER FURNISHED BY OTHERS & INSTALLED BY FMS W/ TAMPER PROOF SCREWS (R-VALUE = 32.4) DOOR HAS AN EXIT MECHANISM FROM THE INTERIOR OF THE COOLER	1



PROFESSIONAL IN CHARGE
SUSAN NELSON KOUGAS

PROJECT MANAGER
JOHN NASHED

QUALITY CONTROL
CHRIS CERBO

DRAWN BY
SAMUEL WANORA

PROJECT NAME
MURPHY USA

MURPHY OIL CONVENIENCE STORE
508 SC - 72

GREENWOOD, SC 29646

FREY MOSS STRUCTURE

1801 Rockdale Industrial Blvd.
Conyers, Georgia 30012
Voice: (800) 368-6385
Fax: (770) 853-8037

FMS JOB NUMBER
G18M0025
FMS MODEL NUMBER
XXXXXX

PROJECT NUMBER
20170844.0

SHEET TITLE
FLOOR PLAN

SHEET NUMBER
E3

PROTO VS.0 01/03/2017