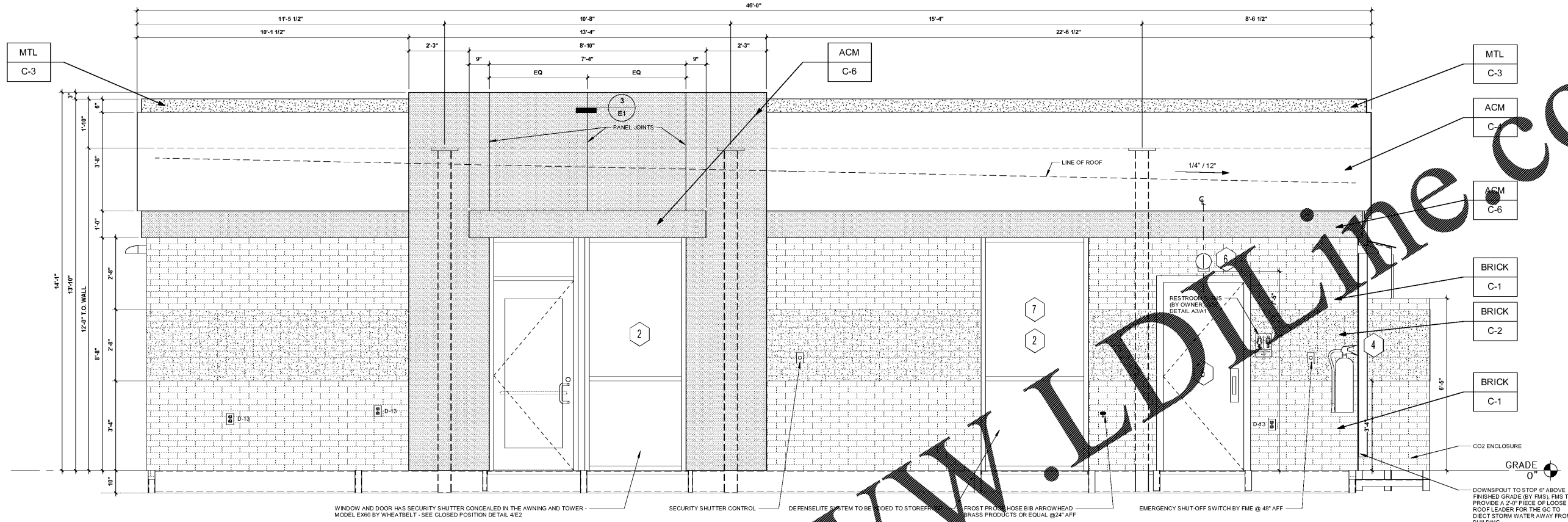


COPYRIGHT NOTICE
This drawing is the property of the above named professional and is not to be used for any purpose other than the specific project and site named herein, without the written permission of the professional.

ISSUE RECORD

| DATE | REV. | DESCRIPTION |
|------------|------|-----------------------|
| 01/03/2017 | | PERMIT SUBMISSION SET |



1 RIGHT ELEVATION (WEST)
1/2" = 1'-0"

KEYED NOTES:

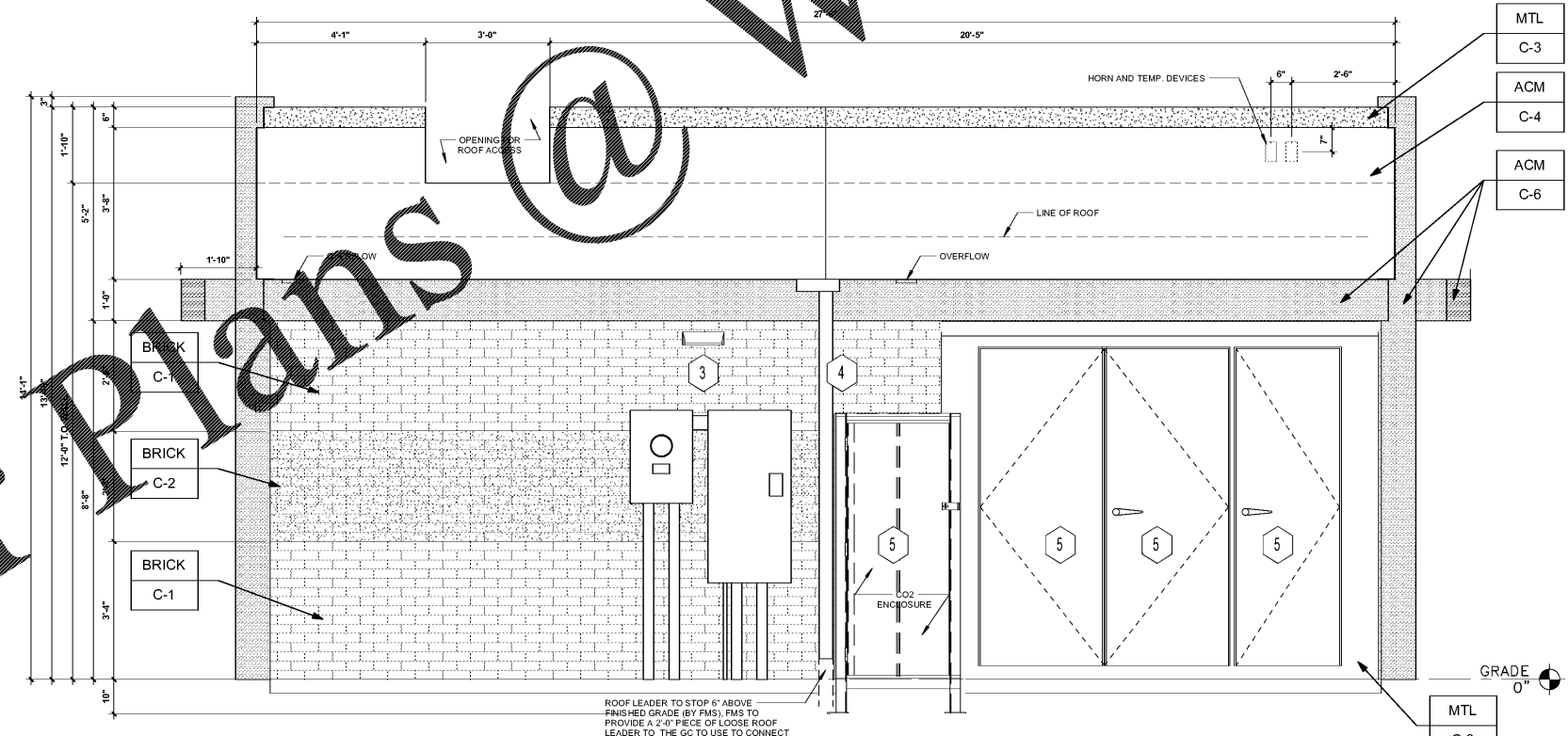
- 1 SIGNAGE (IF REQUIRED) ————— BY SIGN CONTRACTOR
- 2 CLEAR ANODIZED ALUMINUM STOREFRONT SYSTEM KAWNEER, YKK OR EQUAL ————— C-7
- 3 EXTERIOR LIGHTING, REFER TO LIGHTING PLAN ————— SHEET EL2
- 4 4"x4" PAINTED METAL DOWNSPOUTS ————— C-3
- 5 DOORS (EXTERIOR SIDE) AND DOOR FRAMES PAINTED ————— C-3
- 6 LITHONIA REMOTE EMERGENCY HEAD #ELA ————— SHEET EL2
- 7 DEFENSELITE SYSTEM TO BE INSTALLED BY CORNELL AT FMS ————— SHEET E3

EXTERIOR FINISHES:

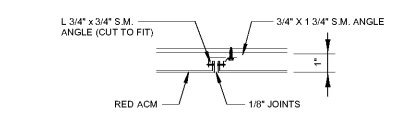
- ACM ACM (3MM THICKNESS) ————— BY FMS
- BRICK THIN BRICK ————— BY FMS
- MTL 20 GA. SHEET METAL (UNLESS NOTED OTHERWISE) ————— BY FMS

EXTERIOR PAINT/COLORS:

- C-1 THIN BRICK VENEER - LIGHT SANDSTONE VELOUR BY ENDICOTT (WIRE CUT FINISH) ————— BY FMS
- C-2 THIN BRICK VENEER - EMPIRE IVORY VELOUR BY CAROLINA CERAMICS (WIRE CUT FINISH) ————— BY FMS
- C-3 DORMER BROWN' SW #7521 ————— BY FMS
- C-4 REYNOLBOND #4 NATURAL BRUSHED ALUMINUM ————— BY FMS
- C-5 OPEN ————— BY FMS
- C-6 PROGRESSIVE ALCOA ————— BY FMS
- C-7 CLEAR ANODIZED ALUMINUM STOREFRONT ————— BY FMS



2 REAR ELEVATION (SOUTH)
1/2" = 1'-0"



3 ACM JOINT DETAIL
E1 N.T.S.



PROFESSIONAL SEAL



PROFESSIONAL IN CHARGE

SUSAN NELSON KOUGIAS
JOHN NASHED

QUALITY CONTROL

CHRIS CERBO

DRAWN BY

SAMUEL VANDRA

PROJECT NAME

MURPHY USA
MURPHY OIL CONVENIENCE STORE
508 SC - 72

GREENWOOD, SC 29646



1801 Rockdale Industrial Blvd.
Conyers, Georgia 30012
Voice: (800) 366-6385
Fax: (770) 483-6037
PFS JOB NUMBER G18MU0025
PFS MODEL NUMBER XXXXXX

PROJECT NUMBER
20170844.0

SHEET TITLE

EXTERIOR ELEVATIONS

SHEET NUMBER

E1