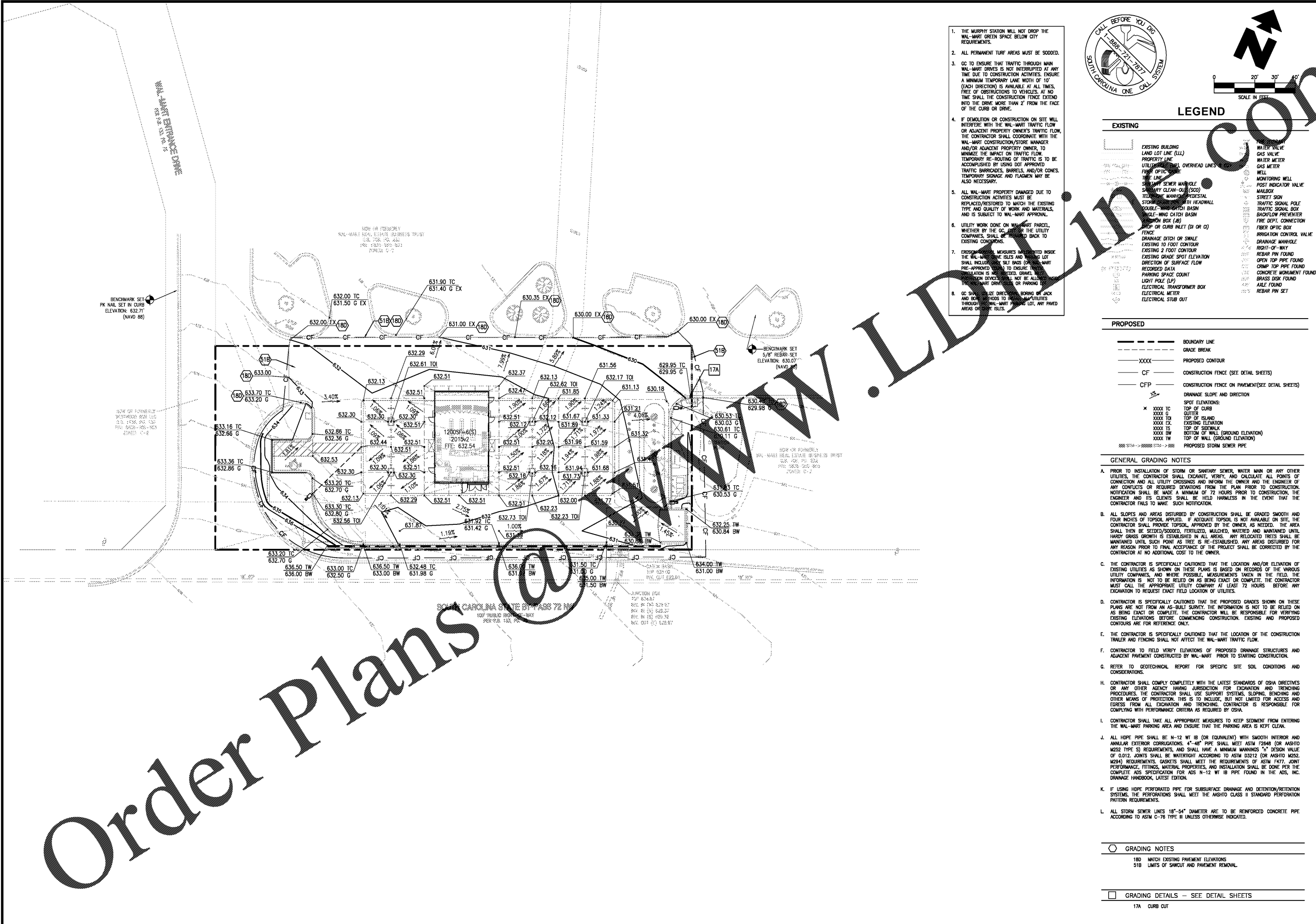


Order Plans



1. THE MURPHY STATION WILL NOT DROP THE WAL-MART GREEN SPACE BELOW CITY REQUIREMENTS.
2. ALL PERMANENT TURF AREAS MUST BE SOODED.
3. GC TO ENSURE THAT TRAFFIC THROUGH MAIN WAL-MART DRIVES IS NOT INTERRUPTED AT ANY TIME DUE TO CONSTRUCTION ACTIVITIES. ENSURE A MINIMUM TEMPORARY LANE WIDTH OF 10' (EACH DIRECTION) IS AVAILABLE AT ALL TIMES. FREE OF OBSTRUCTIONS TO VEHICLES. AT NO TIME SHALL THE CONSTRUCTION FENCE EXTEND INTO THE DRIVE MORE THAN 2' FROM THE FACE OF THE CURB OR DRIVE.
4. IF DEMOLITION OR CONSTRUCTION ON SITE WILL INTERFERE WITH THE WAL-MART TRAFFIC FLOW OR ADJACENT PROPERTY OWNER'S TRAFFIC FLOW, THE CONTRACTOR SHALL COORDINATE WITH THE WAL-MART CONSTRUCTION/STORE MANAGER AND/OR ADJACENT PROPERTY OWNER, TO MINIMIZE THE IMPACT ON TRAFFIC FLOW. TEMPORARY RE-ROUTING OF TRAFFIC IS TO BE ACCOMPLISHED BY USING DOT APPROVED TRAFFIC BARRICADES, BARRELS, AND/OR CONES. TEMPORARY SIGNAGE AND FLAGMEN MAY BE ALSO NECESSARY.
5. ALL WAL-MART PROPERTY DAMAGED DUE TO CONSTRUCTION ACTIVITIES MUST BE REPLACED/RESTORED TO MATCH THE EXISTING TYPE AND QUALITY OF WORK AND MATERIALS, AND IS SUBJECT TO WAL-MART APPROVAL.
6. UTILITY WORK DONE ON WAL-MART PARCEL, WHETHER BY THE GC, OR BY THE UTILITY COMPANIES, SHALL BE REPORTED BACK TO EXISTING CONDITIONS.
7. EROSION CONTROL MEASURES INSTALLED INSIDE THE WAL-MART DRIVE ISLES AND PAVING LOT SHALL INCLUDE SILT BASINS (CONCRETE OR PRE-APPROVED) TO ENSURE THE PAVING LOT INSTALLATION IS NOT ERODED. GRAVEL TRAP DEVICES SHALL NOT BE ALLOWED IN WAL-MART DRIVES OR PARKING AREAS.
8. GC SHALL BE DIRECTLY RESPONSIBLE FOR JACK AND BONDING THROUGH UTILITIES THROUGH WAL-MART PAVING LOT, ANY PAVED AREAS OR DRIVE ISLES.



LEGEND

EXISTING	
[Symbol]	EXISTING BUILDING
[Symbol]	LAND LOT LINE (LL)
[Symbol]	PROPERTY LINE
[Symbol]	UTILITY (W, G, S, E, F, O, H, L, S)
[Symbol]	FIBER OPTIC CABLE
[Symbol]	SEWER MANHOLE
[Symbol]	SAWTOOTH CLEAN-OUT (SCO)
[Symbol]	TELEPHONE MANHOLE/PEDESTAL
[Symbol]	STORM SEWER WITH HEADWALL
[Symbol]	DOUBLE-WING CATCH BASIN
[Symbol]	DOUBLE-WING CATCH BASIN
[Symbol]	STORM BOX (SB)
[Symbol]	DRIP OR CURB INLET (DI OR CI)
[Symbol]	FENCE
[Symbol]	DRAINAGE DITCH OR SWALE
[Symbol]	EXISTING 10 FOOT CONTOUR
[Symbol]	EXISTING 2 FOOT CONTOUR
[Symbol]	EXISTING GRADE SPOT ELEVATION
[Symbol]	DIRECTION OF SURFACE FLOW
[Symbol]	RECORDED DATA
[Symbol]	PARKING SPACE COUNT
[Symbol]	LIGHT POLE (LP)
[Symbol]	ELECTRICAL TRANSFORMER BOX
[Symbol]	ELECTRICAL METER
[Symbol]	ELECTRICAL STUB OUT
[Symbol]	WATER VALVE
[Symbol]	GAS VALVE
[Symbol]	WATER METER
[Symbol]	GAS METER
[Symbol]	MONITORING WELL
[Symbol]	POST INDICATOR VALVE
[Symbol]	MAILBOX
[Symbol]	STREET SIGN
[Symbol]	TRAFFIC SIGNAL POLE
[Symbol]	TRAFFIC SIGNAL BOX
[Symbol]	BACKFLOW PREVENTER
[Symbol]	FIRE DEPT. CONNECTION
[Symbol]	FIBER OPTIC BOX
[Symbol]	IRRIGATION CONTROL VALVE
[Symbol]	DRAINAGE MANHOLE
[Symbol]	RIGHT-OF-WAY
[Symbol]	REBAR PIN FOUND
[Symbol]	OPEN TOP PIPE FOUND
[Symbol]	CRIMP TOP PIPE FOUND
[Symbol]	CONCRETE MONUMENT FOUND
[Symbol]	BRASS DISK FOUND
[Symbol]	ARLZ FOUND
[Symbol]	REBAR PIN SET

PROPOSED	
[Symbol]	BOUNDARY LINE
[Symbol]	GRADE BREAK
[Symbol]	PROPOSED CONTOUR
[Symbol]	CONSTRUCTION FENCE (SEE DETAIL SHEETS)
[Symbol]	CONSTRUCTION FENCE ON PAVEMENT (SEE DETAIL SHEETS)
[Symbol]	DRAINAGE SLOPE AND DIRECTION
[Symbol]	SPOT ELEVATIONS:
[Symbol]	TOP OF CURB
[Symbol]	GUTTER
[Symbol]	TOP OF ISLAND
[Symbol]	EXISTING ELEVATION
[Symbol]	TOP OF SIDEWALK
[Symbol]	TOP OF WALL (GROUND ELEVATION)
[Symbol]	TOP OF WALL (GROUND ELEVATION)
[Symbol]	PROPOSED STORM SEWER PIPE

GENERAL GRADING NOTES

- PRIOR TO INSTALLATION OF STORM OR SANITARY SEWER, WATER MAIN OR ANY OTHER UTILITIES THE CONTRACTOR SHALL EXCAVATE, VERIFY, AND CALCULATE ALL POINTS OF CONNECTION AND ALL UTILITY CROSSINGS AND INFORM THE OWNER AND THE ENGINEER OF ANY CONFLICTS OR REQUIRED DEVIATIONS FROM THE PLAN PRIOR TO CONSTRUCTION. NOTIFICATION SHALL BE MADE MINIMUM OF 72 HOURS PRIOR TO CONSTRUCTION. THE ENGINEER AND ITS CLIENTS SHALL BE HELD HARMLESS IN THE EVENT THAT THE CONTRACTOR FAILS TO MAKE SUCH NOTIFICATION.
- ALL SLOPES AND AREAS DISTURBED BY CONSTRUCTION SHALL BE GRADED SMOOTH AND FOUR INCHES OF TOPSOIL APPLIED. IF ADEQUATE TOPSOIL IS NOT AVAILABLE ON SITE, THE CONTRACTOR SHALL PROVIDE TOPSOIL APPROVED BY THE OWNER, AS NEEDED. THE AREA SHALL THEN BE SEED/SOODED, FERTILIZED, MULCHED, WATERED AND MAINTAINED UNTIL HARDY GRASS GROWTH IS ESTABLISHED IN ALL AREAS. ANY RELOCATED TREES SHALL BE MAINTAINED UNTIL SUCH POINT AS TREE IS RE-ESTABLISHED. ANY AREAS DISTURBED FOR ANY REASON PRIOR TO FINAL ACCEPTANCE OF THIS PROJECT SHALL BE CORRECTED BY THE CONTRACTOR AT NO ADDITIONAL COST TO THE OWNER.
- THE CONTRACTOR IS SPECIFICALLY CAUTIONED THAT THE LOCATION AND/OR ELEVATION OF EXISTING UTILITIES AS SHOWN ON THESE PLANS IS BASED ON RECORDS OF THE VARIOUS UTILITY COMPANIES, AND WHERE POSSIBLE, MEASUREMENTS TAKEN IN THE FIELD. THE INFORMATION IS NOT TO BE RELIED ON AS BEING EXACT OR COMPLETE. THE CONTRACTOR MUST CALL THE APPROPRIATE UTILITY COMPANY AT LEAST 72 HOURS BEFORE ANY EXCAVATION TO REQUEST EXACT FIELD LOCATION OF UTILITIES.
- CONTRACTOR IS SPECIFICALLY CAUTIONED THAT THE PROPOSED GRADES SHOWN ON THESE PLANS ARE NOT FROM AN AS-BUILT SURVEY. THE INFORMATION IS NOT TO BE RELIED ON AS BEING EXACT OR COMPLETE. THE CONTRACTOR WILL BE RESPONSIBLE FOR VERIFYING EXISTING ELEVATIONS BEFORE COMMENCING CONSTRUCTION. EXISTING AND PROPOSED CONTOURS ARE FOR REFERENCE ONLY.
- THE CONTRACTOR IS SPECIFICALLY CAUTIONED THAT THE LOCATION OF THE CONSTRUCTION TRAILER AND FENCING SHALL NOT AFFECT THE WAL-MART TRAFFIC FLOW.
- CONTRACTOR TO FIELD VERIFY ELEVATIONS OF PROPOSED DRAINAGE STRUCTURES AND ADJACENT PAVEMENT CONSTRUCTED BY WAL-MART PRIOR TO STARTING CONSTRUCTION.
- REFER TO GEOTECHNICAL REPORT FOR SPECIFIC SITE SOIL CONDITIONS AND CONSIDERATIONS.
- CONTRACTOR SHALL COMPLY COMPLETELY WITH THE LATEST STANDARDS OF OSHA DIRECTIVES OR ANY OTHER AGENCY HAVING JURISDICTION FOR EXCAVATION AND TRENCHING PROCEDURES. THE CONTRACTOR SHALL USE SUPPORT SYSTEMS, SLOPING, BRACING AND OTHER MEANS OF PROTECTION. THIS IS TO INCLUDE, BUT NOT LIMITED TO ACCESS AND EGRESS FROM ALL EXCAVATION AND TRENCHING. CONTRACTOR IS RESPONSIBLE FOR COMPLYING WITH PERFORMANCE CRITERIA AS REQUIRED BY OSHA.
- CONTRACTOR SHALL TAKE ALL APPROPRIATE MEASURES TO KEEP SEDIMENT FROM ENTERING THE WAL-MART PARKING AREA AND ENSURE THAT THE PARKING AREA IS KEPT CLEAN.
- ALL HOPE PIPE SHALL BE N-12 WT 18" (OR EQUIVALENT) WITH SMOOTH INTERIOR AND ANNULAR EXTERIOR CORRUGATIONS. 4"-48" PIPE SHALL MEET ASTM F2648 (OR AASHTO M252 TYPE S) REQUIREMENTS, AND SHALL HAVE A MINIMUM MANNINGS "N" DESIGN VALUE OF 0.012. JOINTS SHALL BE WATERIGHT ACCORDING TO ASTM D3212 (OR AASHTO M252, M234) REQUIREMENTS. GASKETS SHALL MEET THE REQUIREMENTS OF ASTM F477. JOINT PERFORMANCE, FITTINGS, MATERIAL PROPERTIES, AND INSTALLATION SHALL BE DONE PER THE COMPLETE ADS SPECIFICATION FOR ADS N-12 WT 18" PIPE FOUND IN THE ADS, INC. DRAINAGE HANDBOOK, LATEST EDITION.
- IF USING HOPE PERFORATED PIPE FOR SUBSURFACE DRAINAGE AND DETENTION/RETENTION SYSTEMS, THE PERFORATIONS SHALL MEET THE AASHTO CLASS II STANDARD PERFORATION PATTERN REQUIREMENTS.
- ALL STORM SEWER LINES 18"-54" DIAMETER ARE TO BE REINFORCED CONCRETE PIPE ACCORDING TO ASTM C-78 TYPE II UNLESS OTHERWISE INDICATED.

GRADING NOTES	
[Symbol]	180 MATCH EXISTING PAVEMENT ELEVATIONS
[Symbol]	518 LIMITS OF SAWCUT AND PAVEMENT REMOVAL
GRADING DETAILS - SEE DETAIL SHEETS	
[Symbol]	17A CURB CUT

GREENWOOD SOUTH CAROLINA
WALMART SUPERCENTER #1382
508 SC -72

GreenbergFarrow
 1430 W. PEACHTREE ST., NW SUITE 200
 ATLANTA, GA 30309
 PHONE: (404) 601-4000
 FAX: (404) 601-4000
 DWG NAME: GREENWOOD SOUTH CAROLINA
 JOB NO.: 201078440

MURPHY OIL USA, INC.
MURPHY 200 PEACH STREET
USA P.O. BOX 7000
EL DORADO, AR 71730-7000

CONCRETE SHEET NO. C-3

REV	DATE	BY	CHK	APP	DESCRIPTION	
REV-2	04-27-18	YO	PRN	DS	MB	DRW