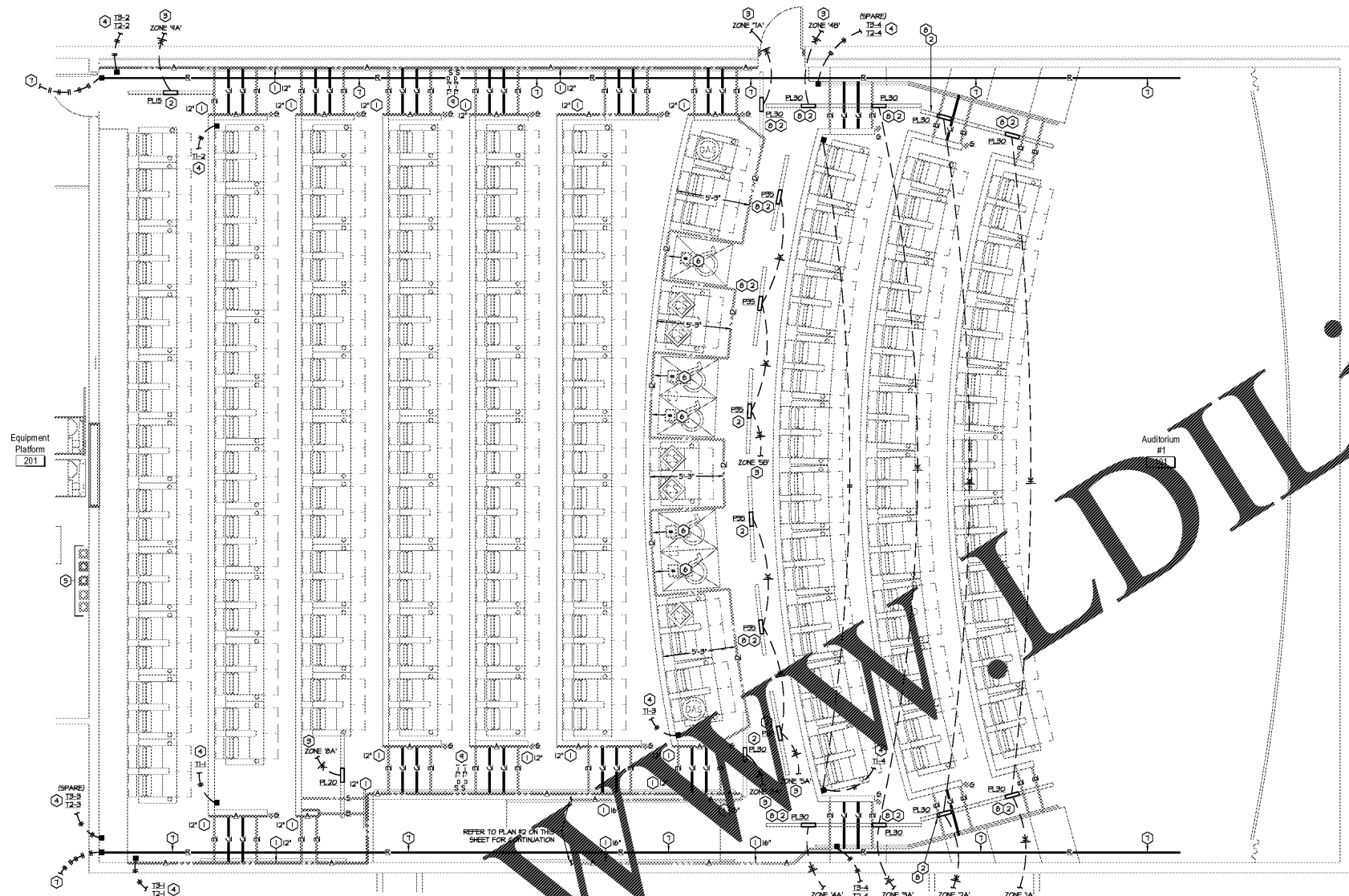
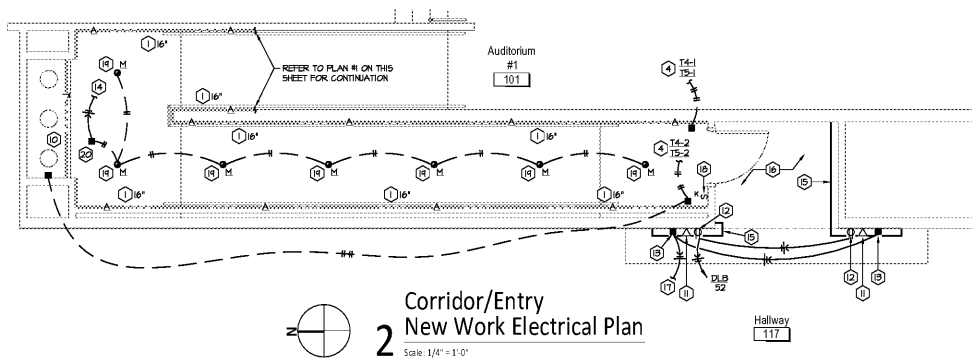


Order Plans @



1 Auditorium Aisle Lighting
New Work Electrical Plan
Scale: 1/4" = 1'-0"



2 Corridor/Entry
New Work Electrical Plan
Scale: 1/4" = 1'-0"

- GENERAL NOTES:**
- REFER TO SHEET PLFE FOR GENERAL NOTES.
 - ALL LOW VOLTAGE LIGHTING SHALL BE DOLBY BLUE.
 - PROVIDE HALL LIGHTING TO SUPPLEMENT TEMPO HLS TYPE TP FIXTURES AS REQUIRED TO MAINTAIN 0.2 FC ALONG EGRESS PATH.
 - CONTRACTOR SHALL WORK WITH COMMISSIONING AGENT TO VERIFY 0.2 FC IS ACHIEVED ALONG EGRESS PATH.

- PLAN NOTES:**
- HALL LIGHT - NEW HALL LIGHT. NO HG CABLE ALLOWED. MOUNT AT HEIGHT AS NOTED ON PLAN.
 - CEILING HLS EGRESS LIGHT - INSTALL NEW CEILING HLS EGRESS LIGHT FINISHED BY TEMPO. MANUFACTURER SHALL ADJUST THE OPTICS OF THE LIGHT FIXTURE MODULE TO ACHIEVE 0.2 FC ALONG EGRESS PATH. LIGHTING SHALL NOT HIT SEATS. PROVIDE HALL LIGHTING FIXTURES (FLS) FOR SHOP DRAWINGS AND ENGINEERING COMMENTS.
 - CEILING HLS LIGHT DIMMING ZONE - PROVIDE DIMMING ZONES AS INDICATED ON PLAN. REFER TO LIGHTING CONTROLLER SCHEMATIC ON SHEET PLFE FOR MORE INFORMATION AND GENERAL NOTES. REFER TO PLAN NOTE #2 ON SHEET PLFE FOR DIMMER LOCATION.
 - ELECTRICAL CONTRACTOR SHALL PROVIDE FEEDS AND WIRING BETWEEN JUNCTION BOX IN AUDITORIUM AND TRANSFORMERS IN BENTLEY. THE CONTRACTOR SHALL PROVIDE FIXTURES AND WIRING IN AUDITORIUM. REFER TO LIGHTING CONTROLLER SCHEMATIC ON SHEET PLFE FOR MORE INFORMATION. HG CABLE IS NOT PERMITTED.
 - HALL AND BENTLEY LIGHTING TRANSFORMER AND WIRING WORKERS FINISHED BY TEMPO. REFER TO ARCHITECTURAL DRAWINGS FOR TRANSFORMER LOCATION.
 - ADA LIGHT - MOUNT ILLUMINATED HANDICAP MONOGRAM ON HALL BEHIND ADA TOILET.
 - AUDITORIUM COVE LIGHT - PROVIDE DESIGNATED NUMBER OF LOW VOLTAGE RECESSED COVE LIGHTS TO ACHIEVE 0.2 FC ALONG EGRESS PATH IN THE HALL. REFER TO ARCHITECTURAL PLANS FOR MONOGRAM LOCATION.
 - CEILING HLS EGRESS LIGHT TRACK - CONTRACTOR SHALL FIELD MODIFY LIGHT FIXTURE TRACK AS SHOWN TO PREVENT CONFLICTS WITH SPEAKERS, OTHER LIGHT FIXTURES, GRILLES, AND OTHER CEILING ITEMS.
 - TRASH NICHE LIGHT - INSTALL DIMMERS FINISHED BY AISLE LIGHTING MANUFACTURER. PROVIDE IN 4X4 JUNCTION BOX.
 - TRASH NICHE LIGHT - PROVIDE LOW VOLTAGE LIGHTING TO ILLUMINATE TRASH NICHE. PROVIDE 4X4 JUNCTION BOX. COORDINATE EXACT FIXTURE TYPE WITH OWNER.
 - MONITOR DATA - PROVIDE RECESSED JUNCTION BOX AND INSTALL HORIZONTALLY AND 1" COORDINATE WITH HALL SPRINKLER. STUD COORDINATE OUT 6" ABOVE CEILING. REFER TO ARCHITECTURAL DRAWINGS FOR EXACT JUNCTION BOX LOCATION.
 - MONITOR POWER - PROVIDE RECESSED 2-GANG DUPLEX WITH GAGROPORT PLATE. LEVITON MODEL 690-B FOR MONITOR POWER. PROVIDE LEVITON GAGROPORT CONNECTOR COMPATIBLE WITH CURRENT OWNERS DATA CABLEING PREFERENCE. REFER TO ARCHITECTURAL DRAWINGS FOR EXACT RECEPTACLE LOCATION. REFER TO LIGHTING CONTROLLER SCHEMATIC ON SHEET PLFE FOR MORE INFORMATION.
 - GOVE LIGHT AND ENTRY SIGN POWER - PROVIDE RECESSED JUNCTION BOX FOR GOVE LIGHT AND ENTRY SIGN POWER. COORDINATE LOCATION WITH SIGNAGE CONSULTANT. DIMENSIONAL INNOVATIONS PROJECT MANAGER, (813) 384-3480.
 - REFER TO NOTE #1 ON SHEET PLFE FOR CONTINUATION.
 - ENTRY SIGN - ENTRY ACCENT LIGHTING AT SIGNAGE BY SIGNAGE CONTRACTOR.
 - REFER TO DOMESTIC DEVELOPMENT SHEETS FOR GENERAL AND EMERGENCY LIGHTING.
 - REFER TO DOMESTIC DEVELOPMENT SHEETS FOR CONTROL.
 - HOUSE-KEEPING SWITCH - PROVIDE HOUSE-KEEPING SWITCH. REFER TO DOMESTIC DEVELOPMENT SHEET E101 FOR CONTROL DIAGRAM AND SWITCH MODEL.
 - CAN LIGHT - PROVIDE CAN LIGHT. REFER TO LIGHT FIXTURE SCHEDULE ON SHEET PLFE FOR MORE INFORMATION. CONNECT TO EXISTING EMERGENCY CIRCUIT AS SHOWN.
 - LIGHTING TRANSFORMER - PROVIDE LOW VOLTAGE LIGHTING TRANSFORMER AND ACCESS PANEL.

- AISLE LIGHTING SYMBOLS**
- A- USER HALL LIGHT - DOLBY BLUE LED
 - B- BULLNOSE - DOLBY BLUE LED (TOP), NO LED (FRONT)
 - C- BULLNOSE - DUAL GRAY STRIPE
 - D- FLOOR LIGHT - DOLBY BLUE LED (TOP)
 - I- TRASH NICHE LIGHT - DOLBY BLUE LED
 - R- AUDITORIUM COVE LIGHT - DOLBY BLUE LED
 - S- BULLNOSE - DOLBY BLUE LED (TOP), DOLBY BLUE LED (FRONT)
- ILLUMINATED HANDICAP MONOGRAM. REFER TO ARCHITECTURAL DRAWINGS FOR MONOGRAM NUMBER.
- ⊙ VERTICAL LIGHT - DOLBY BLUE LED

- AISLE LIGHTING XFMR WIRING LEGEND**
- TRANSFORMER 1 - ADA, VERTICAL LIGHT, SEAT LIGHT, BULLNOSE, AND RUNWAY LIGHTING
 - TRANSFORMER 2A3 - AUDITORIUM BACK & SIDE USER LIGHTING
 - TRANSFORMER 4A3 - VENTRIUM USER LIGHTING & TRASH NICHE

Professional Engineer Seal for J. B. Brown, No. 12589, State of Georgia. Project: AMC Madison Yards SE, Atlanta, GA. Date: 05/22/2018. Drawn by: B.S. Checked by: M.B.

SHEET LEGEND

GENERAL INFORMATION & COPIES OF WORK

WORK - GENERAL INFORMATION & COPIES OF WORK

A100 FLOOR PLANS & CEILING PLANS
A105 EXTERIOR & INTERIOR ELEVATIONS
A200 BUILDING SECTIONS
A300 FINISHED FLOOR PLANS
A400 DOOR SCHEDULE, DOOR DETAILS
A500 AUDITORIUM SEAT LINE SECTION

EX STRUCTURAL
ME MECHANICAL
PE PLUMBING
EE ELECTRICAL
HVAC HEATING, VENTILATION & AIR CONDITIONING
P/E PLUMBING & EQUIPMENT
P/E PLUMBING & EQUIPMENT

AMC MADISON YARDS 8

AMC NEW BUILD
905 MEMORIAL DR SE
ATLANTA, GA 30316

amc

American Multi-Cinema, Inc.
One AMC Way
11500 Ash Street
Leawood, KS 66211

REV	DATE	DESCRIPTION

Project Issue Date: 05/22/2018

KEY PLAN:

1	2	3	4	5
6	7	8	9	10
11	12	13	14	15
16	17	18	19	20

NORTH

SHEET TITLE:

AUDITORIUM AND ENTRY LIGHTING PLAN

SHEET NUMBER:

PLFE4

IF THE LINES TO THE LEFT ARE NOT IN COLOR, THEN SOME INFORMATION IS INCOMPLETE OR MISLEADING. COLORED LINES INDICATE WHICH TRANSFORMER IS FEEDING AISLE LIGHTING.