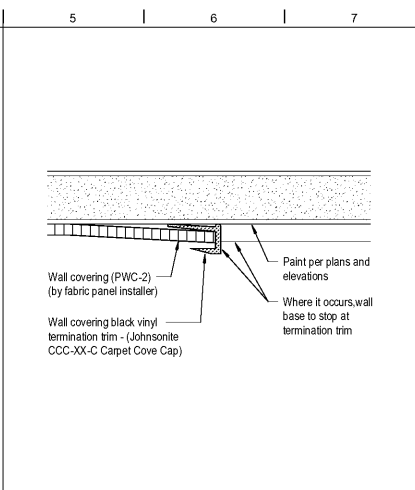
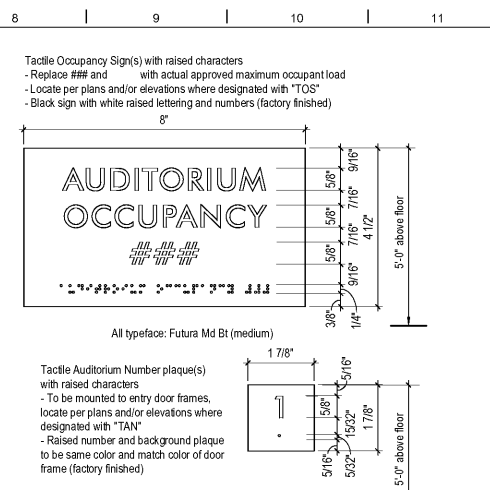


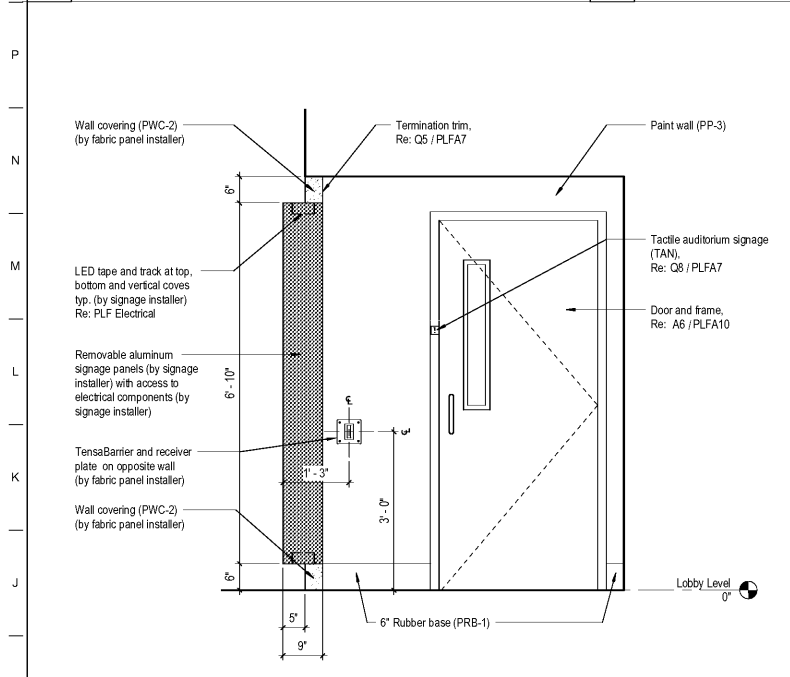
Q1 Dolby - Corner Detail @ Entry Sign  
PLFA7 3/4" = 1'-0"



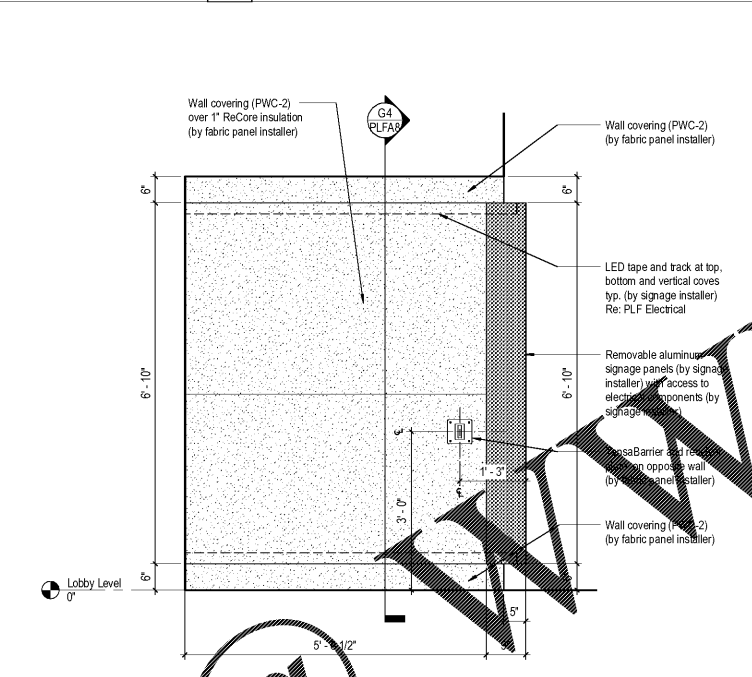
Q5 Dolby - Wall Covering Termination Trim  
12" = 1'-0"



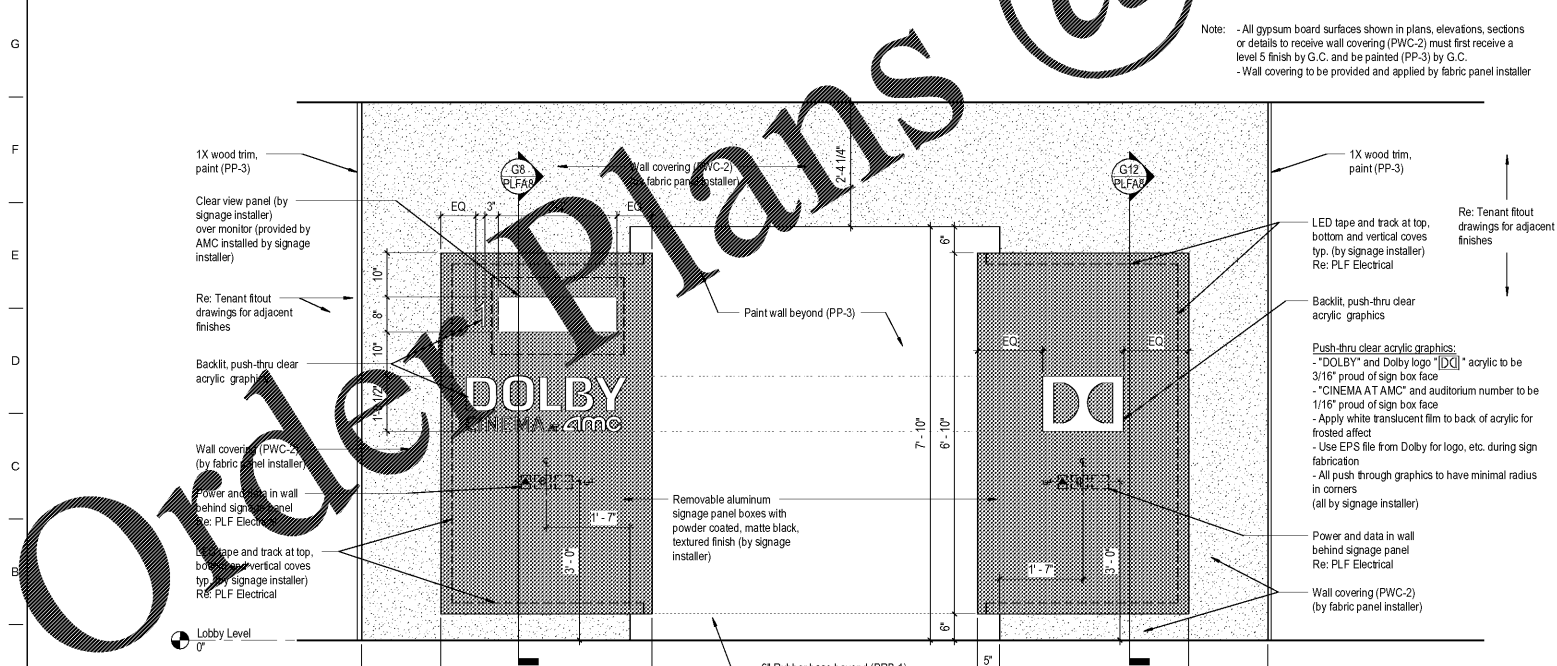
Q6 Tactile Sign Plaques  
6" = 1'-0"



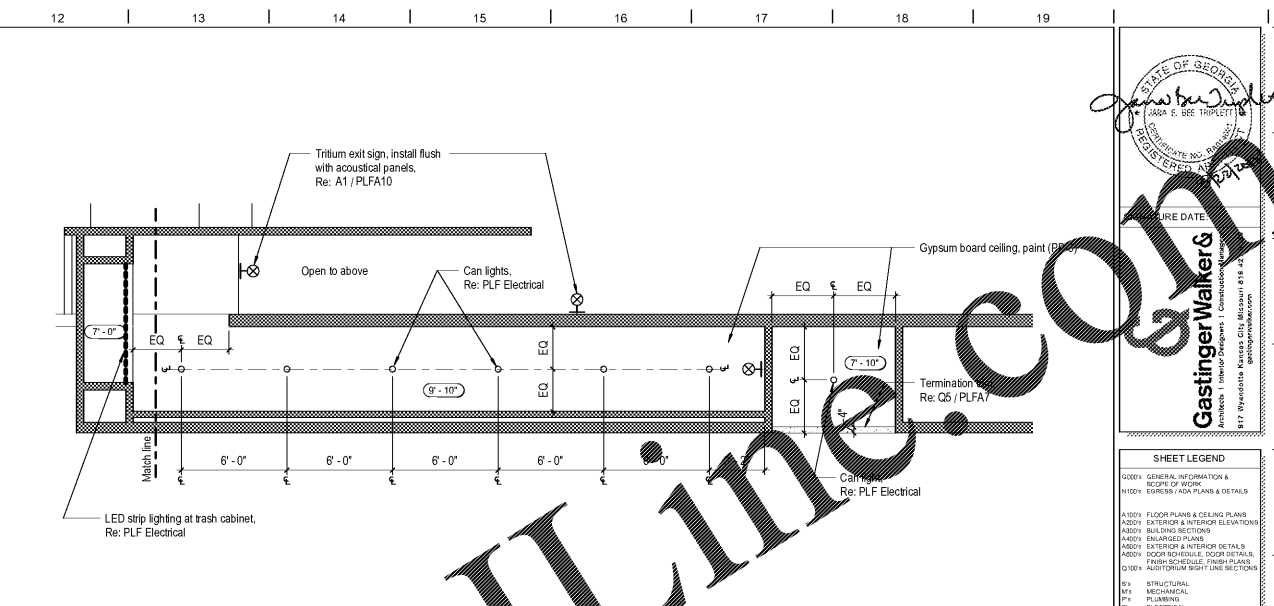
H1 Auditorium #1 Entry - Side Elevation  
PA1 3/4" = 1'-0"



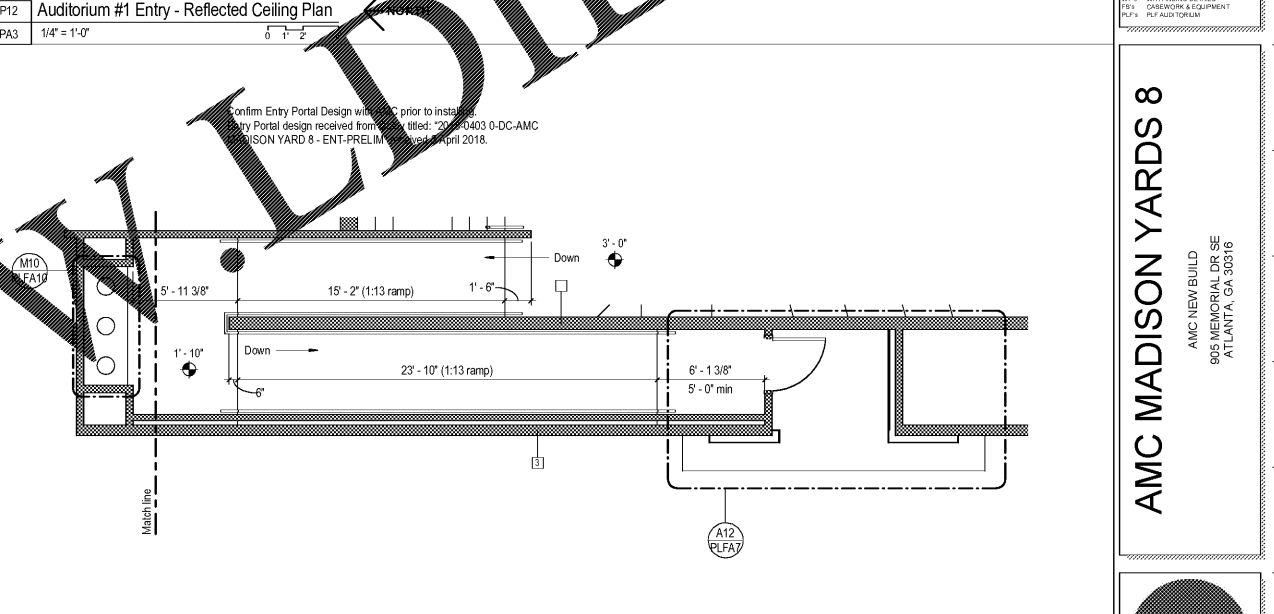
H6 Auditorium #1 Entry - Side Elevation  
PA1 3/4" = 1'-0"



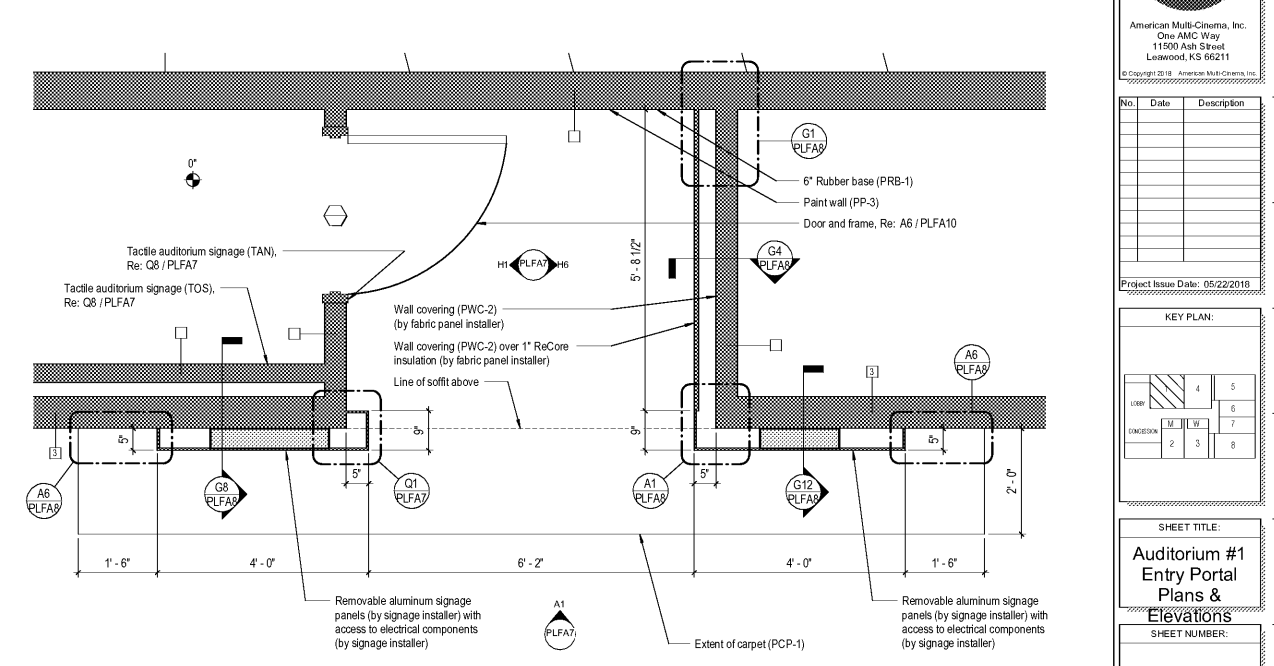
A1 Auditorium #1 Entry - Front Elevation  
PA1 3/4" = 1'-0"



P12 Auditorium #1 Entry - Reflected Ceiling Plan  
PA3 1/4" = 1'-0"



H12 Auditorium #1 Entry - Floor Plan  
1/4" = 1'-0"



A12 Auditorium #1 Entry - Signage Plan  
PLFA7 3/4" = 1'-0"

STATE OF GEORGIA  
GASTINGER WALKER & ASSOCIATES, INC.  
Professional Seal  
No. 10709  
Exp. 12/31/22  
FLOOR PLANS & DETAILS  
SHEET LEGEND  
GENERAL INFORMATION & SCOPE OF WORK  
LEGEND: INTERIOR ELEVATIONS  
FLOOR PLANS & DETAILS  
SECTIONAL ELEVATIONS  
MECHANICAL  
ELECTRICAL  
PLUMBING  
PAINTING  
FLOORING & EQUIPMENT  
AUDITORIUM

AMC MADISON YARDS 8  
AMC NEW BUILD  
905 MEMORIAL DR SE  
ATLANTA, GA 30316

amc  
American Multi-Cinema, Inc.  
One AMC Way  
11500 Ash Street  
Lawrenceville, GA 30045  
Project Issue Date: 05/22/2018

No.	Date	Description

KEY PLAN:  
SHEET TITLE:  
Auditorium #1  
Entry Portal  
Plans &  
Elevations

SHEET NUMBER:  
PLFA7