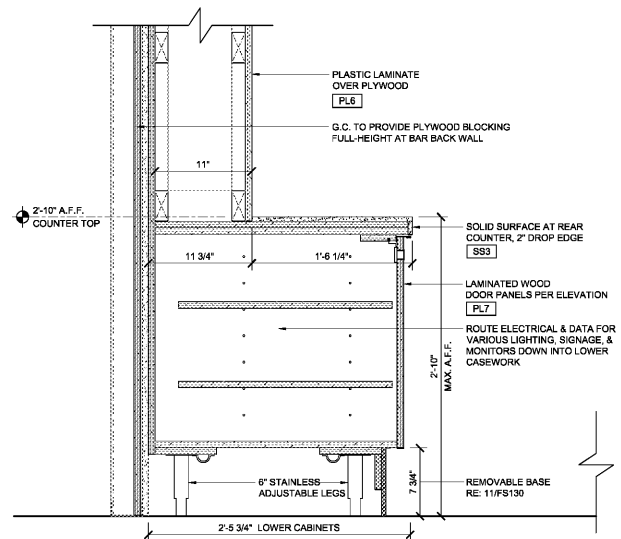
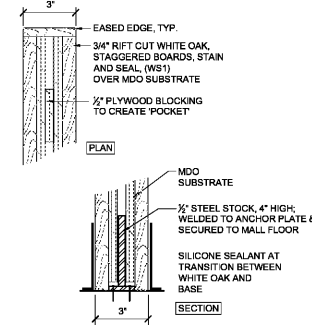


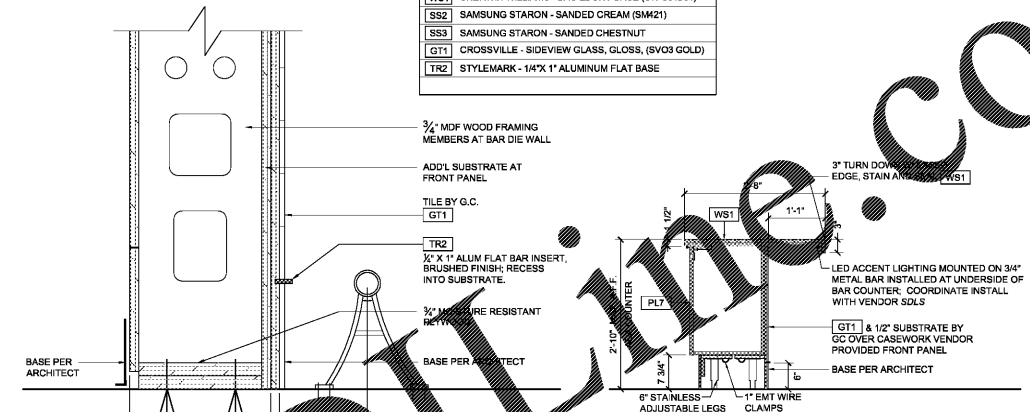
7 SECTION AT MacGUFFINS BACK BAR
SCALE: 1 1/2" = 1'-0"



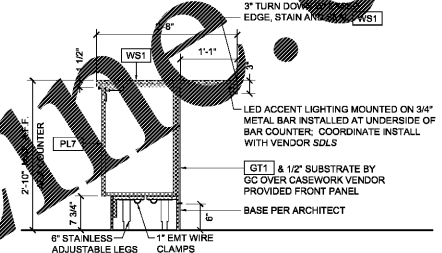
6 SECTION AT MacGUFFINS BAR
SCALE: 1 1/2" = 1'-0"



5 BAR TOP VERTICAL
SCALE: 3" = 1'-0"



4 DETAIL OF FOOT RAIL
SCALE: 3" = 1'-0"



3 SECTION AT ADA BAR COUNTER
SCALE: 3/4" = 1'-0"

FINISH KEY

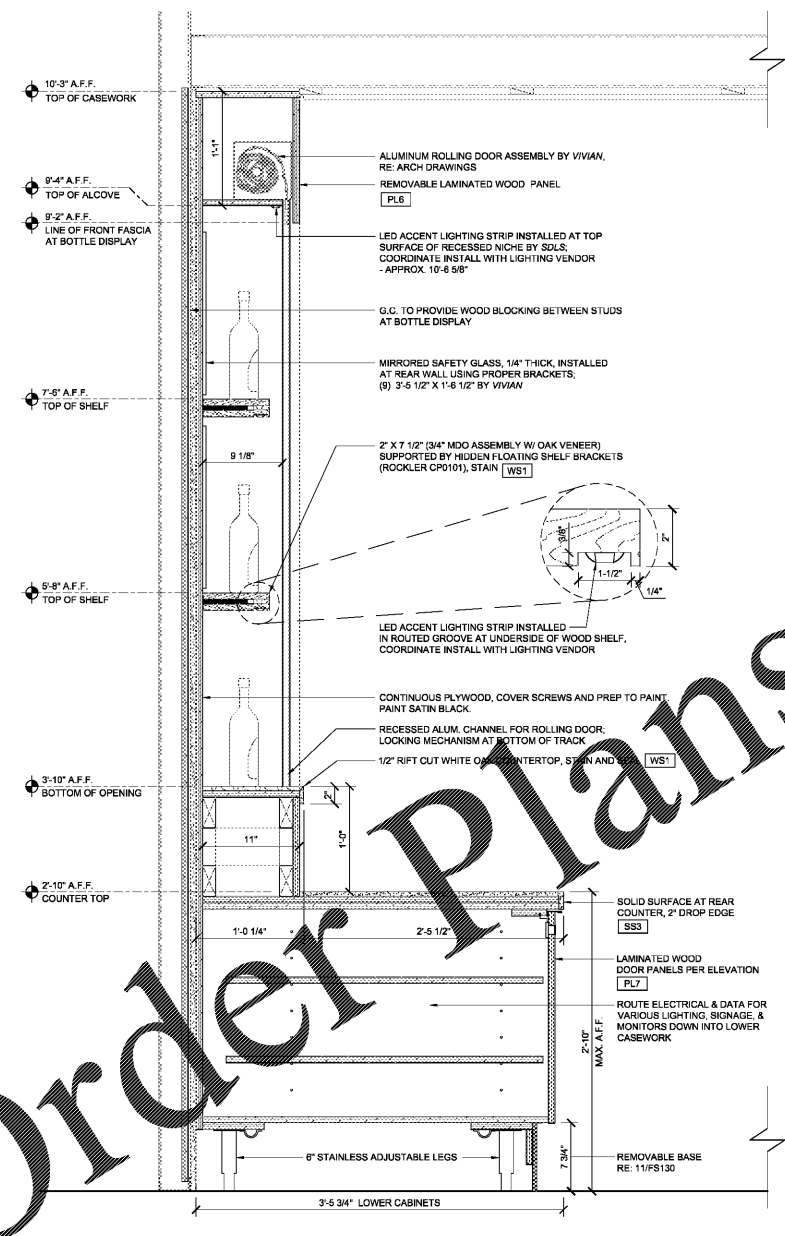
[PL4]	WILSONART - WALNUT HEIGHTS (7965-12)
[PL5]	WILSONART - VAPOR STRANDZ (4939K-16)
[PL6]	WILSONART - FORGED STEEL
[PL7]	WILSONART - EBONY RECON (7997-38)
[PL8]	CHEMETAL - BRUSHED ALUMINUM (702)
[PL9]	WILSONART - SHADOW (D96-60)
[PL10]	WILSONART - WESTERN WHITE (4669-60)
[WS1]	SHERWIN WILLIAMS - BAC EBONY BASE (SW 964954)
[SS2]	SAMSUNG STARON - SANDED CREAM (SM21)
[SS3]	SAMSUNG STARON - SANDED CHESTNUT
[GT1]	CROSSVILLE - SIDEVIEW GLASS, GLOSS, (SVO3 GOLD)
[TR2]	STYLEMARK - 1/4"X 1" ALUMINUM FLAT BASE

NOTE:
ALL FLOORS TO BE LEVELED PRIOR TO INSTALLATION OF CASEWORK & EQUIPMENT.

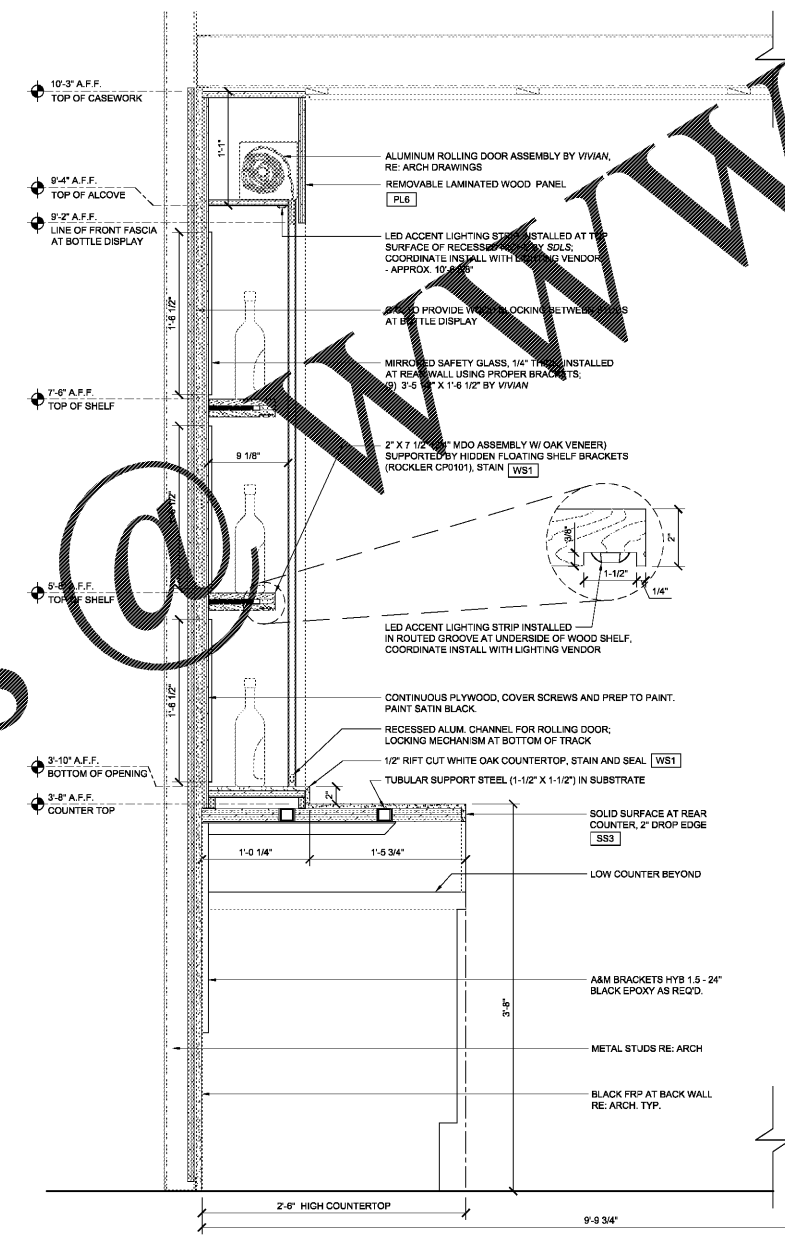
environmentics inc
1000 SHELBY DRIVE
NORTH KENNESAW, GA 30144
PH: (770) 422-7222 FAX: (770) 422-8555

SHEET LEGEND

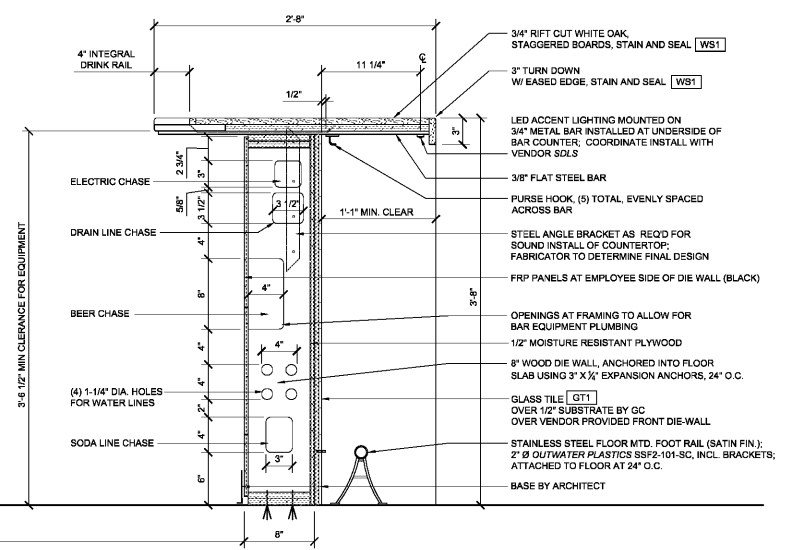
REV	DATE	DESCRIPTION
001		ISSUE FOR PERMIT
002		REVISED FOR PERMIT
003		REVISED FOR PERMIT
004		REVISED FOR PERMIT
005		REVISED FOR PERMIT
006		REVISED FOR PERMIT
007		REVISED FOR PERMIT
008		REVISED FOR PERMIT
009		REVISED FOR PERMIT
010		REVISED FOR PERMIT
011		REVISED FOR PERMIT
012		REVISED FOR PERMIT
013		REVISED FOR PERMIT
014		REVISED FOR PERMIT
015		REVISED FOR PERMIT
016		REVISED FOR PERMIT
017		REVISED FOR PERMIT
018		REVISED FOR PERMIT
019		REVISED FOR PERMIT
020		REVISED FOR PERMIT



2 SECTION AT MacGUFFINS BAR
SCALE: 1 1/2" = 1'-0"

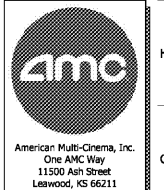


1 SECTION AT MacGUFFINS BAR
SCALE: 1 1/2" = 1'-0"



MacGUFFINS BAR SECTIONS & DETAILS

AMC MADISON YARDS 8
AMC NEW BUILD
905 MEMORIAL DRIVE SE
ATLANTA, GA 30316



AMC
American Multi-Cinema, Inc.
One AMC Way
11500 Ash Street
Leawood, KS 66211

KEY PLAN:

SHEET TITLE:
MacGUFFINS BAR SECTIONS & DETAILS

SHEET NUMBER:
FS132

Order Plans