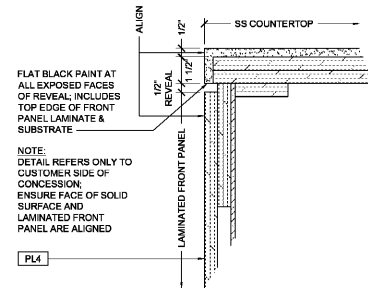


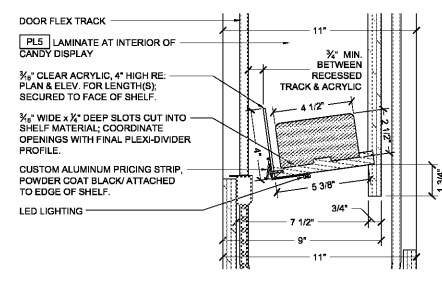
| FINISH KEY |   |
|------------|---|
| PL4        | WILSONART - WALNUT HEIGHTS (7965-12)            |
| PL5        | WILSONART - VAPOR STRANDZ (469K-16)             |
| PL6        | WILSONART - FORGED STEEL                        |
| PL7        | WILSONART - EBONY RECON (7997-38)               |
| PL8        | CHEMETAL - BRUSHED ALUMINUM (702)               |
| PL9        | WILSONART - SHADOW (D96-60)                     |
| PL10       | WILSONART - WESTERN WHITE (4996-60)             |
| WS1        | SHERWIN WILLIAMS - BAC EBONY BASE (SW 564B54)   |
| SS2        | SAMSUNG STARON - SANDED CREAM (SM421)           |
| SS3        | SAMSUNG STARON - SANDED CHESTNUT                |
| GT1        | CROSSVILLE - SIDEVIEW GLASS, GLOSS, (SV03 GOLD) |
| TR2        | STYLEMARK - 14"x 1" ALUMINUM FLAT BASE          |

NOTE:  
ALL FLOORS TO BE LEVELED PRIOR  
TO INSTALLATION OF CASEWORK &  
EQUIPMENT.

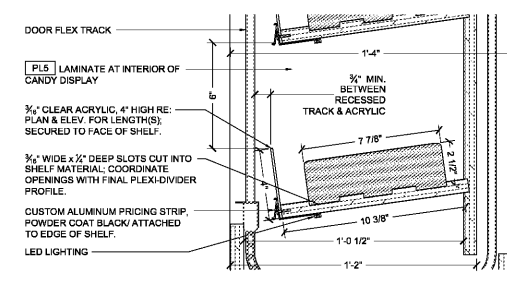
LIGHTING DETAIL AT  
**15** INTEGRAL CANDY DISPLAY  
SCALE: 3" = 1'-0"



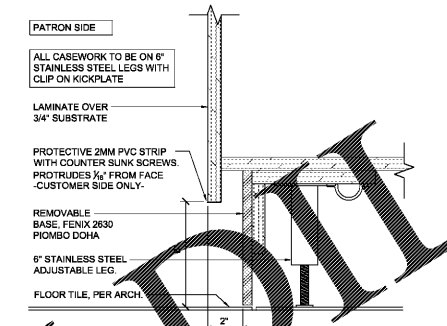
**14** DETAIL AT SOLID  
SURFACE TURN-DOWN  
SCALE: 3" = 1'-0"



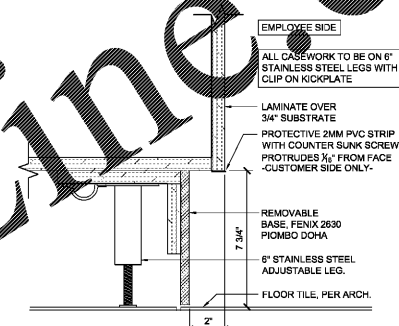
**13** DETAIL AT  
INTEGRAL CANDY SHELF  
SCALE: 3" = 1'-0"



**12** DETAIL AT  
POP-UP CANDY DISPLAY SHELF  
SCALE: 3" = 1'-0"

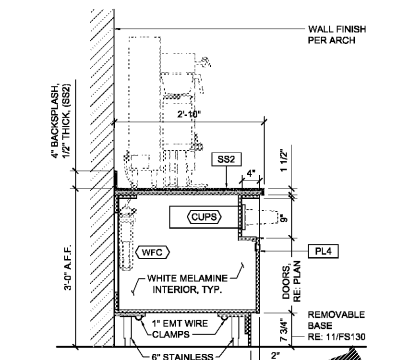


**11** DETAIL AT  
INTEGRAL COVE BASE (PUBLIC)  
SCALE: 3" = 1'-0"

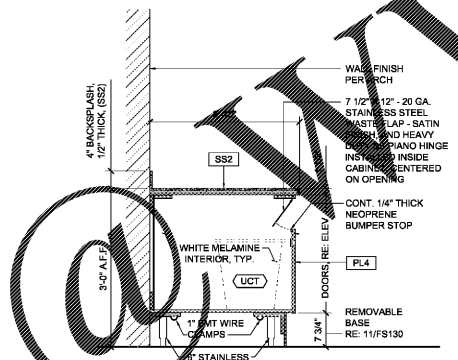


**10** DETAIL AT  
INTEGRAL COVE BASE  
SCALE: 3" = 1'-0"

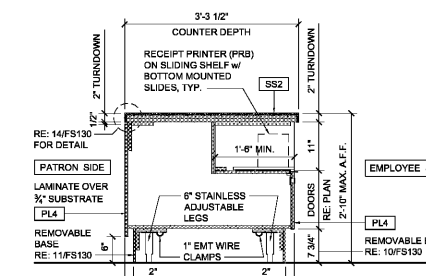
TYPICAL CASEWORK DETAILS



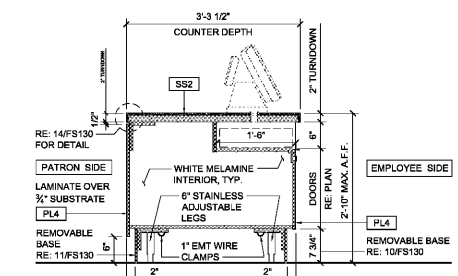
**9** SECTION AT CUPS & COFFEE  
SCALE: 3/4" = 1'-0"



**8** SECTION AT TRASH RECEPTACLE  
SCALE: 3/4" = 1'-0"

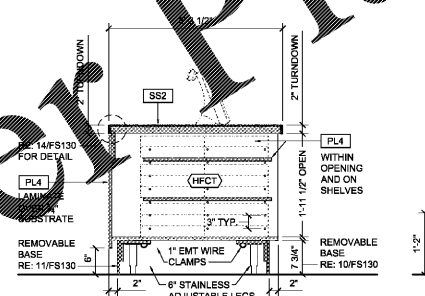


**7** SECTION AT PRINTER  
SCALE: 3/4" = 1'-0"

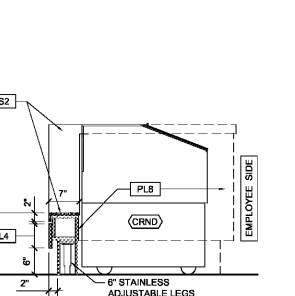


**6** SECTION AT CASH DRAWER  
SCALE: 3/4" = 1'-0"

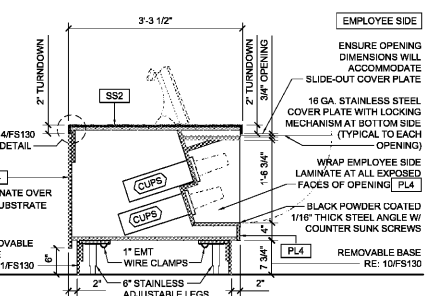
CONCESSION REAR COUNTER



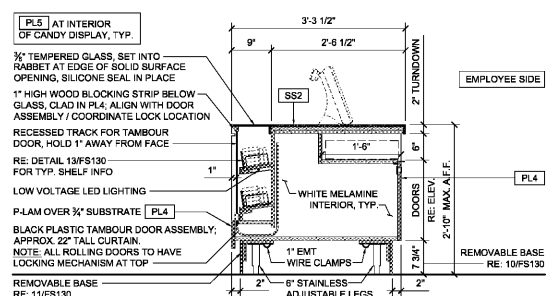
**5** SECTION AT  
HOT FOOD CARRY TRAY  
SCALE: 3/4" = 1'-0"



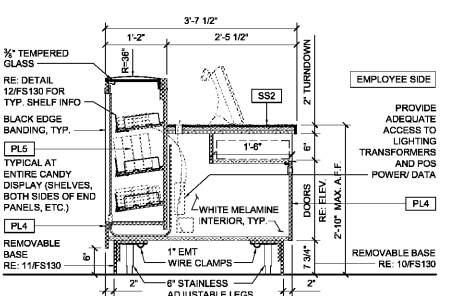
**4** SECTION AT  
CONDITIONER  
SCALE: 3/4" = 1'-0"



**3** SECTION AT CUPS  
SCALE: 3/4" = 1'-0"



**2** SECTION AT CASH DRAWER &  
INTEGRAL CANDY DISPLAY  
SCALE: 3/4" = 1'-0"



**1** SECTION AT CASH DRAWER &  
POP-UP CANDY DISPLAY  
SCALE: 3/4" = 1'-0"

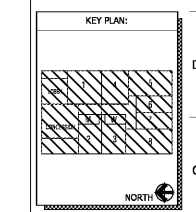
CONCESSION FRONT COUNTER

| SHEET LEGEND |  |
|--------------|--|
| SS2          | SAMSUNG STARON - SANDED CREAM          |
| SS3          | SAMSUNG STARON - SANDED CHESTNUT       |
| GT1          | CROSSVILLE - SIDEVIEW GLASS, GLOSS     |
| TR2          | STYLEMARK - 14"x 1" ALUMINUM FLAT BASE |
| PL4          | WILSONART - WALNUT HEIGHTS             |
| PL5          | WILSONART - VAPOR STRANDZ              |
| PL6          | WILSONART - FORGED STEEL               |
| PL7          | WILSONART - EBONY RECON                |
| PL8          | CHEMETAL - BRUSHED ALUMINUM            |
| PL9          | WILSONART - SHADOW                     |
| PL10         | WILSONART - WESTERN WHITE              |
| WS1          | SHERWIN WILLIAMS - BAC EBONY BASE      |
| SS2          | SAMSUNG STARON - SANDED CREAM          |
| SS3          | SAMSUNG STARON - SANDED CHESTNUT       |
| GT1          | CROSSVILLE - SIDEVIEW GLASS, GLOSS     |
| TR2          | STYLEMARK - 14"x 1" ALUMINUM FLAT BASE |

AMC MADISON YARDS 8  
AMC NEW BUILD  
505 MEMORIAL DRIVE SE  
ATLANTA, GA 30316



| REV | DATE | DESCRIPTION |
|-----|------|-------------|
|     |      |             |
|     |      |             |
|     |      |             |
|     |      |             |



SHEET TITLE:  
TYPICAL CASEWORK SECTIONS & DETAILS

SHEET NUMBER:  
**FS130**

Order Plans

WWW.IDOLINE.COM

environetics inc  
1000 SHERWOOD DRIVE  
NORTH KANSAS CITY, MISSOURI 64116  
PH: (816) 741-8222 FAX: (816) 741-8555