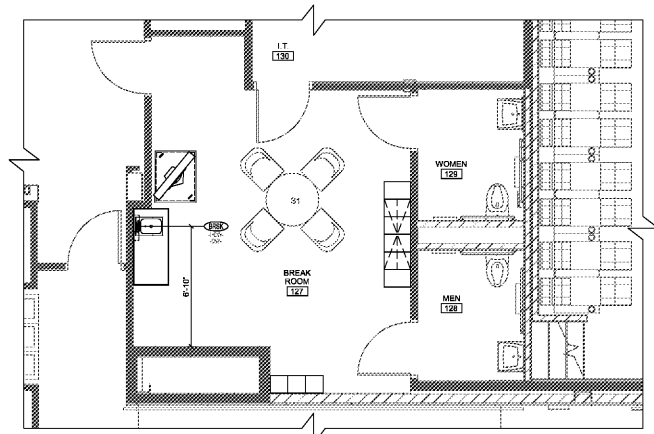


PLUMBING ROUGH-IN NOTES

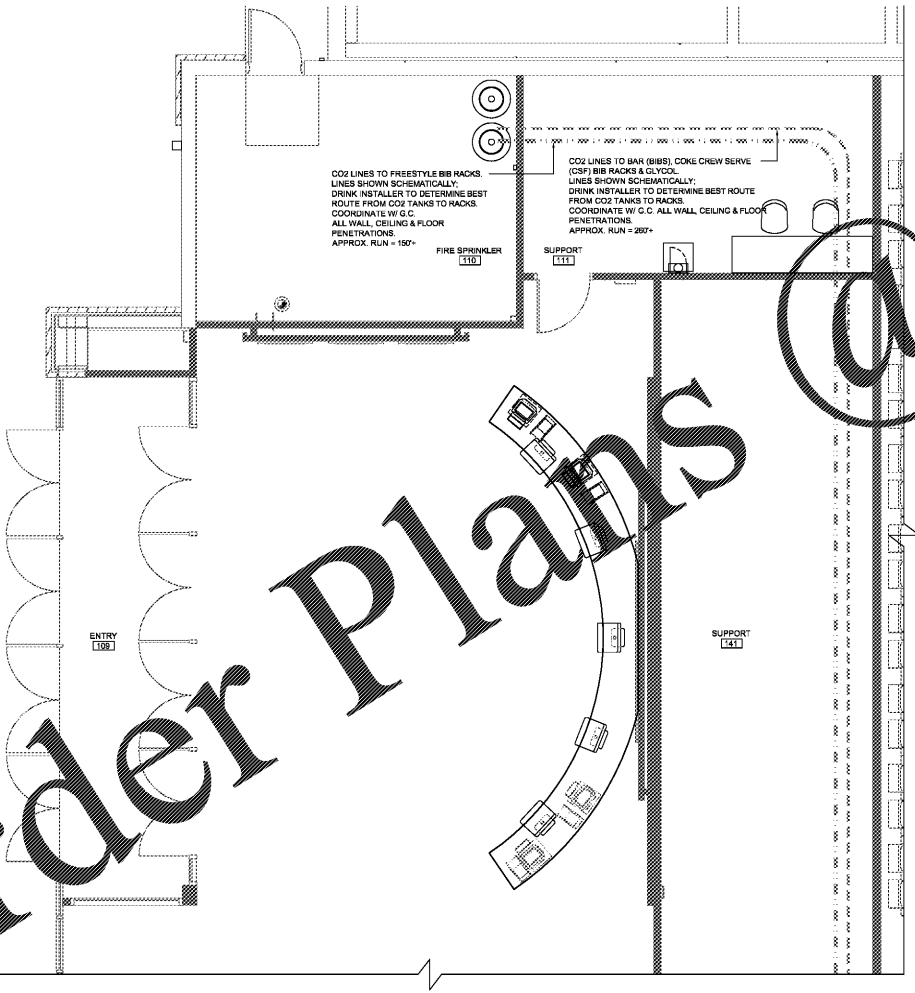
1. PLUMBING SERVICES SHOWN RELATE TO FOOD SERVICE REQUIREMENTS ONLY AND SHOW ONLY THE POINT OF CONNECTION. SEE ARCHITECTURAL AND ENGINEERING DRAWINGS FOR ADDITIONAL INFORMATION.
2. THESE UTILITY REQUIREMENT DRAWINGS INDICATE THE UTILITY AND LOCATION OF REQUIREMENTS BASED ON THE EQUIPMENT SPECIFIED.
3. ALL EQUIPMENT SHALL BE PLUMBING IN STRICT CONFORMANCE WITH THE MANUFACTURER'S INSTRUCTIONS AND/OR SHOP DRAWINGS.
4. ALL PLUMBING CONNECTIONS SHALL BE EXTENDED AND INTERCONNECTED TO CONNECTION POINTS ON THE EQUIPMENT BY OTHERS. UNLESS SPECIFIED, ALL HARDWARE REQUIRED FOR THESE CONNECTIONS SHALL BE SUPPLIED BY THE PLUMBING CONTRACTOR.
5. EVERY EFFORT SHALL BE MADE TO ROUTE PIPING THROUGH AND OUT OF BUILDING WALLS WHERE POSSIBLE. WHERE SURFACE MOUNTED PLUMBING IS UNAVOIDABLE, IT MUST BE IN COMPLIANCE WITH ALL LOCAL CODES AND BE COORDINATED WITH environetics inc.
6. ROUGH-INS OUT OF FLOOR SHOULD BE STUBBED UP 4" ABOVE FINISHED FLOOR AND BROUGHT TO THE REQUIRED HEIGHT AFTER EQUIPMENT IS SET IN PLACE.
7. ONLY COMPONENTS SUPPLIED STANDARD BY THE MANUFACTURER ARE INCLUDED. ALL HARDWARE REQUIRED FOR CONNECTIONS SHALL BE SUPPLIED BY THE PLUMBING CONTRACTOR. SUCH COMPONENTS INCLUDE BUT ARE NOT LIMITED TO: SHUT-OFFS, PRESSURE REGULATORS, VACUUM BREAKERS, P-TRAPS, BACKFLOW PREVENTERS, ETC.
8. ALL INDIRECT WASTE AND CONDENSATE DRAIN LINES SHALL BE EXTENDED FROM EQUIPMENT FITTINGS TO APPROPRIATE DRAINS WITH AIR GAPS, AS CODES REQUIRE.
9. ANY DISCREPANCY BETWEEN MANUFACTURER'S REQUIREMENTS AND WATER TEMPERATURES PROVIDED SHALL BE CLEARLY IDENTIFIED AND BROUGHT TO THE IMMEDIATE ATTENTION OF environetics inc.

PLUMBING LEGEND

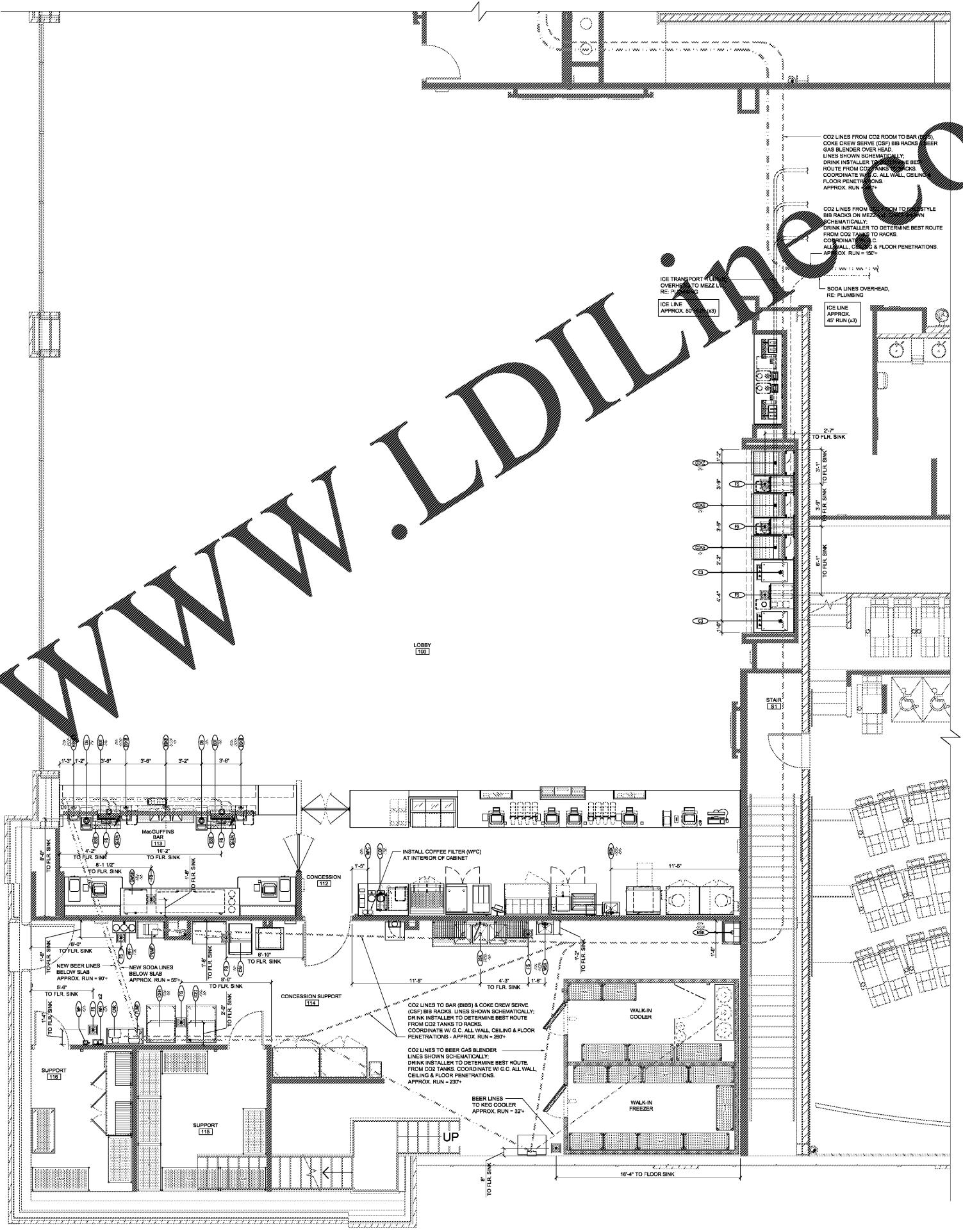
- COLD WATER CONNECTION
- HOT WATER CONNECTION
- ◐ INDIRECT DRAIN CONNECTION
- ◑ DIRECT DRAIN CONNECTION
- ◒ FUNNEL FLOOR DRAIN
- ◓ FLOOR SINK
- ⊕ PLUMBING TAG INDICATING EQUIPMENT TO BE CONNECTED



3 BREAK ROOM PLUMBING ROUGH-IN PLAN
SCALE: 1/4" = 1'-0"



2 BOX OFFICE & CO2 ROOM PLUMBING ROUGH-IN PLAN
SCALE: 1/4" = 1'-0"



1 LOBBY PLUMBING ROUGH-IN PLAN
SCALE: 1/4" = 1'-0"

SHEET LEGEND

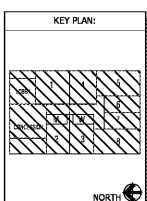
SYMBOL	DESCRIPTION
○	COLD WATER CONNECTION
●	HOT WATER CONNECTION
◐	INDIRECT DRAIN CONNECTION
◑	DIRECT DRAIN CONNECTION
◒	FUNNEL FLOOR DRAIN
◓	FLOOR SINK
⊕	PLUMBING TAG INDICATING EQUIPMENT TO BE CONNECTED

AMC MADISON YARDS 8
AMC NEW BUILD
505 MEMORIAL DRIVE SE
ATLANTA, GA 30316



REV	DATE	DESCRIPTION

ORIGINAL ISSUE DATE: 05/12/2018



SHEET TITLE:
LOBBY
PLUMBING
ROUGH-IN PLAN

SHEET NUMBER:
FS112

Order Plans @

WWW.LDILINE.COM

DATE: _____
environetics inc
1000 SERVICE CHANGES ARE OUR RESPONSIBILITY
ALL REQUIREMENTS SHALL BE PROVIDED BY AMC IN THE PROJECT AND NOT BE CHANGED. SEE OTHER SCHEDULES FOR DETAILS.