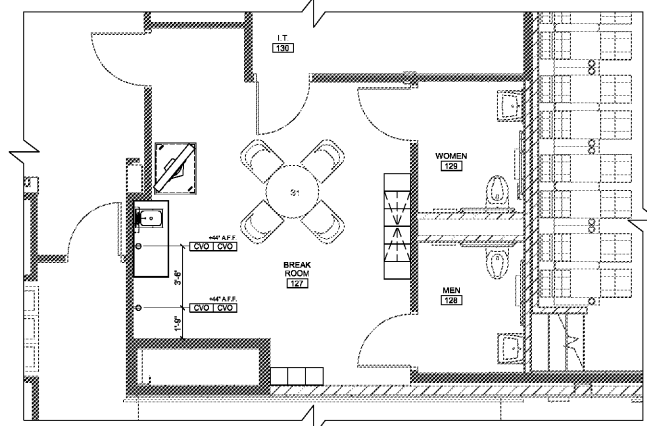


**ELECTRICAL ROUGH-IN NOTES**

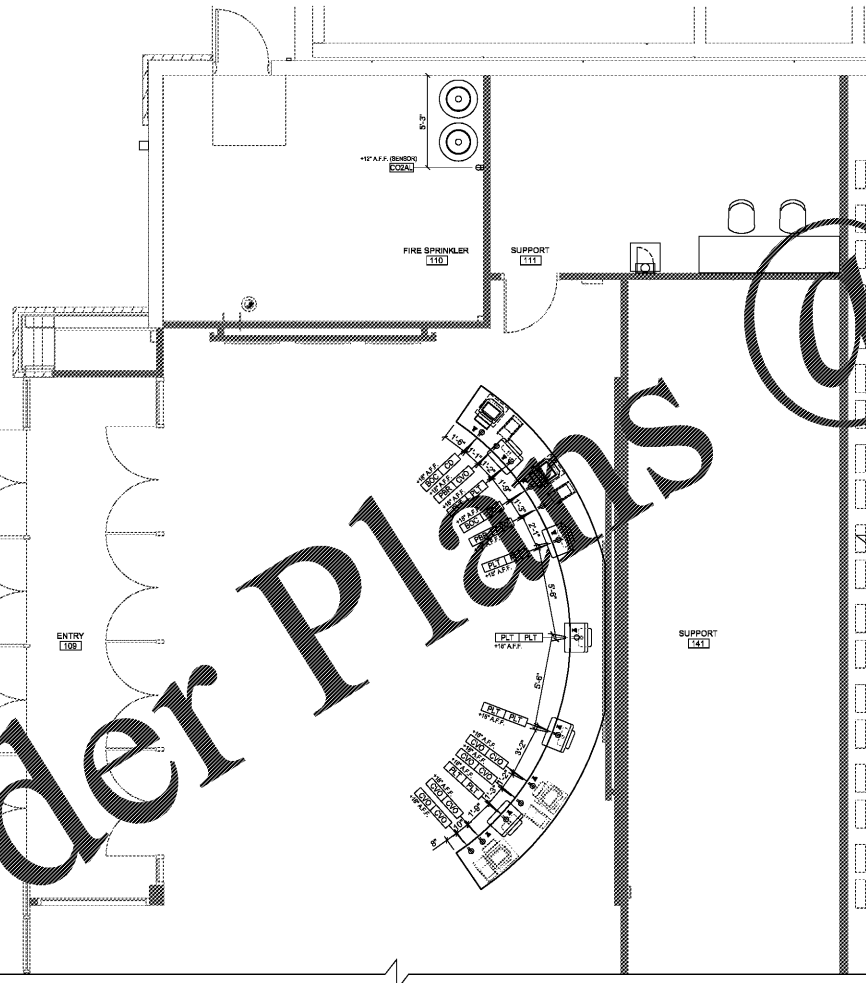
1. (BASIC) SERVICES SHOWN RELATE TO FOOD SERVICE EQUIPMENT REQUIREMENTS ONLY AND SHOW ONLY THE POINT OF CONNECTION. CONVENIENCE RECEPTACLES, SWITCHES, TELEPHONE OUTLETS, LIGHTING NOT ASSOCIATED WITH CASEWORK, DATA CONDUIT, ETC. ARE NOT INCLUDED IN THESE DRAWINGS.
2. ALL EQUIPMENT SHALL BE WIRED IN STRICT CONFORMANCE WITH THE MANUFACTURER'S INSTRUCTIONS AND/OR SHOP DRAWINGS.
3. ALL CIRCUIT BREAKERS PROTECTING 15A & 20A 120V, SINGLE POLE RECEPTACLES IN FABRICATED EQUIPMENT TO BE LOCATED IN THE CONCESSION AREAS. SHALL BE EQUIPPED WITH GROUND FAULT CIRCUIT INTERRUPTER PROTECTION FOR PERSONNEL. PER CODE.
4. ALL ELECTRICAL CONNECTIONS ARE TO BE EXTENDED AND INTERCONNECTED TO CONNECTION POINTS ON THE EQUIPMENT BY OTHERS. UNLESS SPECIFIED, ALL HARDWARE REQUIRED FOR THESE CONNECTIONS SHALL BE SUPPLIED BY THE ELECTRICAL CONTRACTOR.
5. EVERY EFFORT SHALL BE MADE TO ROUTE ELECTRICAL LINES AND CONDUIT THROUGH AND OUT OF BUILDING WALLS OR CEILING WHEN POSSIBLE. WHERE SURFACE MOUNTED CONDUIT IS UNAVOIDABLE, IT MUST BE IN COMPLIANCE WITH ALL LOCAL CODES AND COORDINATED WITH ENVIRONMENTALS INC.
6. ROUGH-INS OUT OF FLOOR SHOULD BE STUBBED UP 4" ABOVE FINISHED FLOOR AND BROUGHT TO THE REQUIRED HEIGHT AFTER EQUIPMENT IS SET IN PLACE.
7. ALL 120 VOLT UTILITY OUTLETS TO BE G.F.C.I. OUTLETS, OR AS REQUIRED BY CODE. RE: ELECTRICAL DRAWINGS FOR FURTHER INFORMATION.
8. ALL NECESSARY ELECTRICAL DISCONNECTS, SHUNT TRIP BREAKERS AND STARTERS ARE TO BE FURNISHED AND INSTALLED BY OTHERS. UNLESS PROVIDED AS A STANDARD OR SPECIFIED EQUIPMENT COMPONENT OF THE EQUIPMENT MANUFACTURER. THIS SHALL INCLUDE BUT NOT BE LIMITED TO ANY REQUIRED ELECTRICAL DISCONNECTS FOR ALL REMOTE COMPRESSORS, BOOSTER HEATERS OR OTHER ITEMS, AS REQUIRED BY CODE.
9. ALL OUTLETS, JUNCTION BOXES, DISCONNECTS, ETC. SHALL BE INSTALLED SO AS NOT TO INTERFERE WITH THE PERFORMANCE, FUNCTION, OR PLACEMENT OF THE EQUIPMENT OR CASEWORK. CONTRACTOR SHALL BE RESPONSIBLE FOR VERIFYING FIELD CONDITIONS AND BRINGING DISCREPANCIES TO THE ATTENTION OF ENVIRONMENTALS INC.
10. STARTERS, RELAYS, HEATERS AND SWITCHES REQUIRED FOR EXHAUST AND SUPPLY FANS ARE TO BE PROVIDED AND INSTALLED BY THE ELECTRICAL CONTRACTOR. RE: ELECTRICAL DRAWINGS.
11. UNLESS PROVIDED BY THE MANUFACTURER, ALL LIGHT BULBS FOR FOODSERVICE EQUIPMENT TO BE PROVIDED BY OTHER.

**ELECTRICAL LEGEND**

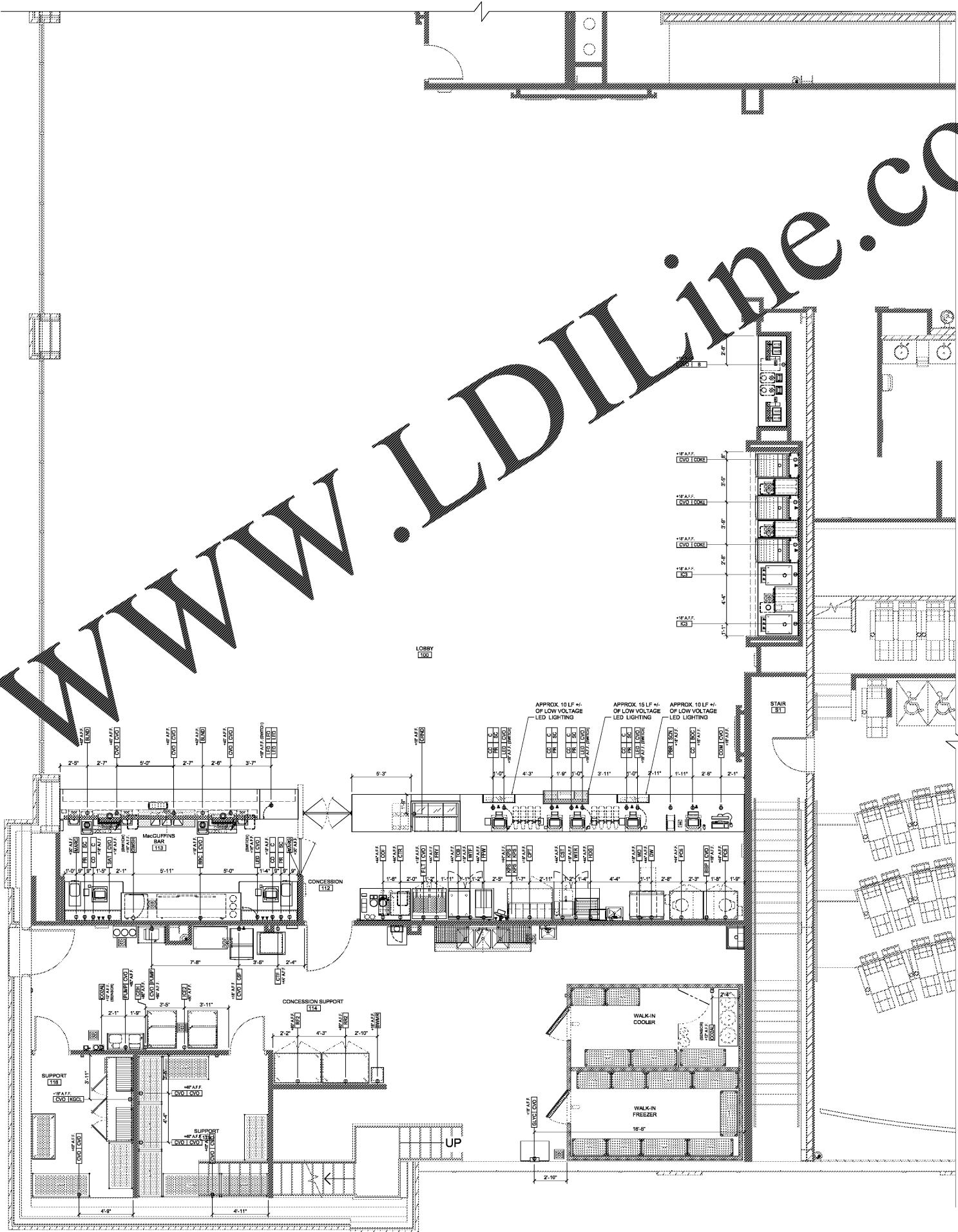
- BT/C BRANCH TO CONNECTION POINT(S)
- V VOLTS
- KW KILOWATTS
- HP HORSEPOWER
- CVO CONVENIENCE OUTLET
- JUNCTION BOX AT WALL BY G.C.
- SINGLE RECEPTACLE AT WALL BY G.C.
- DUPLEX RECEPTACLE AT WALL BY G.C.
- DUPLEX RECEPTACLE TAG INDICATING EQUIPMENT TO BE CONNECTED TO EACH RECEPTACLE
- ELECTRICAL TAG INDICATING



**3 BREAK ROOM ELECTRICAL ROUGH-IN PLAN**  
SCALE: 1/4" = 1'-0"



**2 BOX OFFICE & CO2 ROOM ELECTRICAL ROUGH-IN PLAN**  
SCALE: 1/4" = 1'-0"



**1 LOBBY ELECTRICAL ROUGH-IN PLAN**  
SCALE: 1/4" = 1'-0"

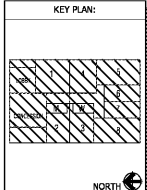
**SHEET LEGEND**

1000	GENERAL INFORMATION & SCOPE OF WORK
1001	GENERAL - SEE PLAN & SECTION
1002	GENERAL - SEE SECTION DRAWING
1003	GENERAL - SEE SECTION DRAWING
1004	GENERAL - SEE SECTION DRAWING
1005	GENERAL - SEE SECTION DRAWING
1006	GENERAL - SEE SECTION DRAWING
1007	GENERAL - SEE SECTION DRAWING
1008	GENERAL - SEE SECTION DRAWING
1009	GENERAL - SEE SECTION DRAWING
1010	GENERAL - SEE SECTION DRAWING
1011	GENERAL - SEE SECTION DRAWING
1012	GENERAL - SEE SECTION DRAWING
1013	GENERAL - SEE SECTION DRAWING
1014	GENERAL - SEE SECTION DRAWING
1015	GENERAL - SEE SECTION DRAWING
1016	GENERAL - SEE SECTION DRAWING
1017	GENERAL - SEE SECTION DRAWING
1018	GENERAL - SEE SECTION DRAWING
1019	GENERAL - SEE SECTION DRAWING
1020	GENERAL - SEE SECTION DRAWING

**AMC MADISON YARDS 8**  
AMC NEW BUILD  
905 MEMORIAL DRIVE SE  
ATLANTA, GA 30316



REV	DATE	DESCRIPTION



**SHEET TITLE:**  
LOBBY  
ELECTRICAL  
ROUGH-IN PLAN

**SHEET NUMBER:**  
FS111

**environetics inc**  
1000 SERVICE CHANGES ARE NOT REPRESENTED  
BY THIS SHEET. ALL REQUIREMENTS SHALL BE  
PROVIDED BY THE FIELD PERSONNEL AND NOT BY  
ENVIRONMENTALS INC. SEE SECTION DRAWING FOR DETAILS.

DATE: 08/21/2018  
DRAWN BY: J. BROWN  
CHECKED BY: J. BROWN

Order Plans @

WWW.LDILine.com