

PLUMBING ROUGH-IN NOTES

1. PLUMBING SERVICES SHOWN RELATE TO FOOD SERVICE REQUIREMENTS ONLY AND SHOW ONLY THE POINT OF CONNECTION. SEE ARCHITECTURAL AND ENGINEERING DRAWINGS FOR ADDITIONAL INFORMATION.
2. THESE UTILITY REQUIREMENT DRAWINGS INDICATE THE UTILITY AND LOCATION OF REQUIREMENTS BASED ON THE EQUIPMENT SPECIFIED.
3. ALL EQUIPMENT SHALL BE PLUMBED IN STRICT CONFORMANCE WITH THE MANUFACTURER'S INSTRUCTIONS AND/OR SHOP DRAWINGS.
4. ALL PLUMBING CONNECTIONS SHALL BE EXTENDED AND INTERCONNECTED TO CONNECTION POINTS ON THE EQUIPMENT BY OTHERS. UNLESS SPECIFIED, ALL HARDWARE REQUIRED FOR THESE CONNECTIONS SHALL BE SUPPLIED BY THE PLUMBING CONTRACTOR.
5. EVERY EFFORT SHALL BE MADE TO ROUTE PIPING THROUGH AND OUT OF BUILDING WALLS WHERE POSSIBLE. WHERE SURFACE MOUNTED PLUMBING IS UNAVOIDABLE, IT MUST BE IN COMPLIANCE WITH ALL LOCAL CODES AND BE COORDINATED WITH *environetics* inc.
6. ROUGH-INS OUT OF FLOOR SHOULD BE STUBBED UP 4" ABOVE FINISHED FLOOR AND BROUGHT TO THE REQUIRED HEIGHT AFTER EQUIPMENT IS SET IN PLACE.
7. ONLY COMPONENTS SUPPLIED STANDARD BY THE MANUFACTURER ARE INCLUDED. ALL HARDWARE REQUIRED FOR CONNECTIONS SHALL BE SUPPLIED BY THE PLUMBING CONTRACTOR. SUCH COMPONENTS INCLUDE BUT ARE NOT LIMITED TO, SHUT-OFFS, PRESSURE REGULATORS, VACUUM BREAKERS, P-TRAPS, BACKFLOW PREVENTERS, ETC.
8. ALL INDIRECT WASTE AND CONDENSATE DRAIN LINES SHALL BE EXTENDED FROM EQUIPMENT FITTINGS TO APPROPRIATE DRAINS WITH AIR GAPS, AS CODES REQUIRE.
9. ANY DISCREPANCY BETWEEN MANUFACTURER'S REQUIREMENTS AND WATER TEMPERATURES PROVIDED SHALL BE CLEARLY IDENTIFIED AND BROUGHT TO THE IMMEDIATE ATTENTION OF *environetics* inc.

PLUMBING LEGEND

- COLD WATER CONNECTION
- HOT WATER CONNECTION
- INDIRECT DRAIN CONNECTION
- DIRECT DRAIN CONNECTION
- ⊗ FUNNEL FLOOR DRAIN
- ⊗ FLOOR SINK
- ⊗ PLUMBING TAG INDICATING EQUIPMENT TO BE CONNECTED

ELECTRICAL ROUGH-IN NOTES

1. (ELEC) SERVICES SHOWN RELATE TO FOOD SERVICE EQUIPMENT REQUIREMENTS ONLY AND SHOW ONLY THE POINT OF CONNECTION. CONVENIENCE RECEPTACLES, SWITCHES, TELEPHONE CATEGORIES LIGHTING NOT ASSOCIATED WITH CASEWORK, DATA CONDUIT, ETC. ARE NOT INCLUDED IN THESE DRAWINGS.
2. ALL EQUIPMENT SHALL BE WIRED IN STRICT CONFORMANCE WITH THE MANUFACTURER'S INSTRUCTIONS AND/OR SHOP DRAWINGS.
3. ALL CIRCUIT BREAKERS PROTECTING 15A & 20A, 120V, SINGLE POLE RECEPTACLES IN FABRICATED EQUIPMENT TO BE LOCATED IN THE CONCESSION AREAS, SHALL BE EQUIPPED WITH GROUND FAULT CIRCUIT INTERRUPTER PROTECTION FOR PERSONNEL, PER CODE.
4. ALL ELECTRICAL CONNECTIONS ARE TO BE EXTENDED AND INTERCONNECTED TO CONNECTION POINTS ON THE EQUIPMENT BY OTHERS. UNLESS SPECIFIED, ALL HARDWARE REQUIRED FOR THESE CONNECTIONS SHALL BE SUPPLIED BY THE ELECTRICAL CONTRACTOR.
5. EVERY EFFORT SHALL BE MADE TO ROUTE ELECTRICAL LINES AND CONDUIT THROUGH AND OUT OF BUILDING WALLS OR CEILING WHEN POSSIBLE. WHERE SURFACE MOUNTED CONDUIT IS UNAVOIDABLE, IT MUST BE IN COMPLIANCE WITH ALL LOCAL CODES AND COORDINATED WITH *environetics* inc.
6. ROUGH-INS OUT OF FLOOR SHOULD BE STUBBED UP 4" ABOVE FINISHED FLOOR AND BROUGHT TO THE REQUIRED HEIGHT AFTER EQUIPMENT IS SET IN PLACE.
7. ALL 20 VOLT UTILITY OUTLETS TO BE G.F.C.I. OUTLETS, OR AS REQUIRED BY CODE. RE: ELECTRICAL DRAWINGS FOR FURTHER INFORMATION.
8. ALL NECESSARY ELECTRICAL DISCONNECTS, SHUNT TRIP BREAKERS AND STARTERS ARE TO BE FURNISHED AND INSTALLED BY OTHERS, UNLESS PROVIDED AS A STANDARD OR SPECIFIED EQUIPMENT COMPONENT OF THE EQUIPMENT MANUFACTURER. THIS SHALL INCLUDE BUT NOT BE LIMITED TO ANY REQUIRED ELECTRICAL DISCONNECTS FOR ALL REMOTE COMPRESSORS, BOOBYEATERS OR OTHER ITEMS, AS REQUIRED BY CODE.
9. ALL OUTLETS, JUNCTION BOXES, DISCONNECTS, ETC. SHALL BE INSTALLED SO AS NOT TO INTERFERE WITH THE PERFORMANCE, FUNCTION, OR PLACEMENT OF THE EQUIPMENT OR CASEWORK. CONTRACTOR SHALL BE RESPONSIBLE FOR VERIFYING FIELD CONDITIONS AND BRINGING DISCREPANCIES TO THE ATTENTION OF *environetics* inc.
10. STARTERS, RELAYS, HEATERS AND SWITCHES REQUIRED FOR EXHAUST AND SUPPLY FANS ARE TO BE PROVIDED AND INSTALLED BY THE ELECTRICAL CONTRACTOR, RE: ELECTRICAL DRAWINGS.
11. UNLESS PROVIDED BY THE MANUFACTURER, ALL LIGHT BULBS FOR FOODSERVICE EQUIPMENT TO BE PROVIDED BY OTHER.

ELECTRICAL LEGEND

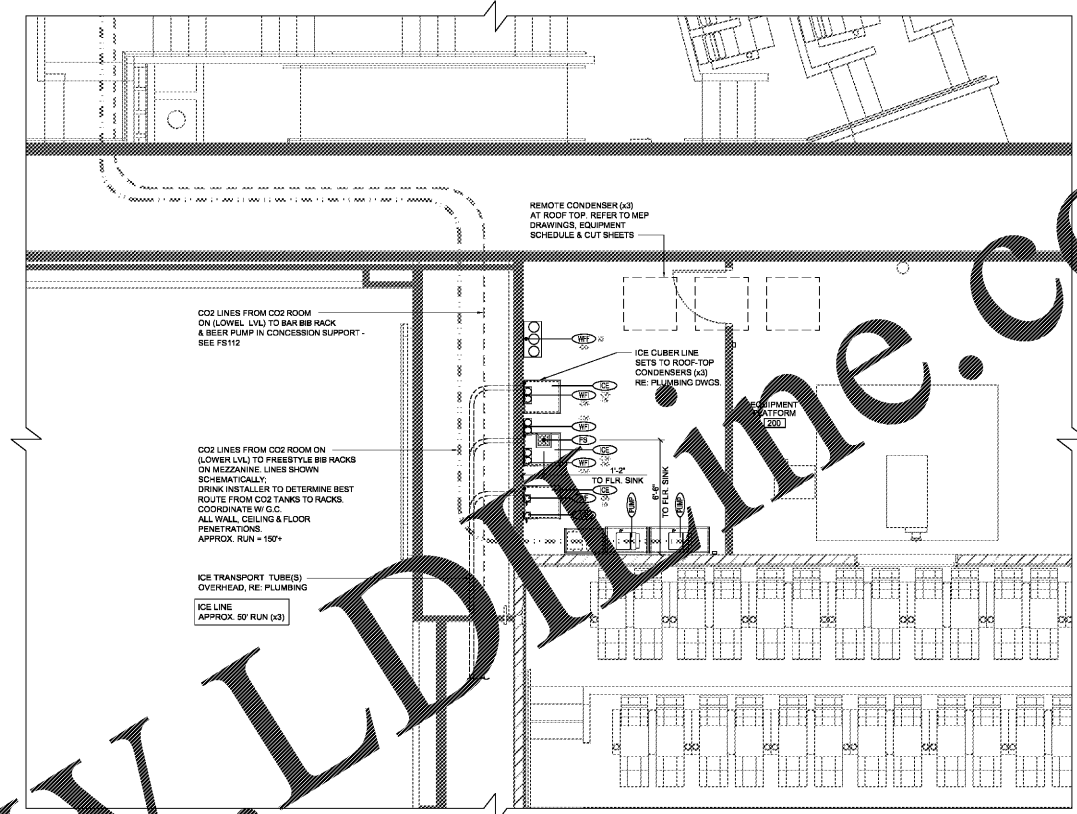
- BTC BRANCH TO CONNECTION POINT(S)
- V VOLTS
- KW KILOWATTS
- HP HORSEPOWER
- COV CONVENIENCE OUTLET
- ◇ JUNCTION BOX AT WALL BY G.C.
- SINGLE RECEPTACLE AT WALL BY G.C.
- ⊗ DUPLEX RECEPTACLE AT WALL BY G.C.
- ⊗ DUPLEX RECEPTACLE TAG INDICATING EQUIPMENT TO BE CONNECTED TO EACH RECEPTACLE
- ⊗ ELECTRICAL TAG INDICATING

GENERAL NOTES

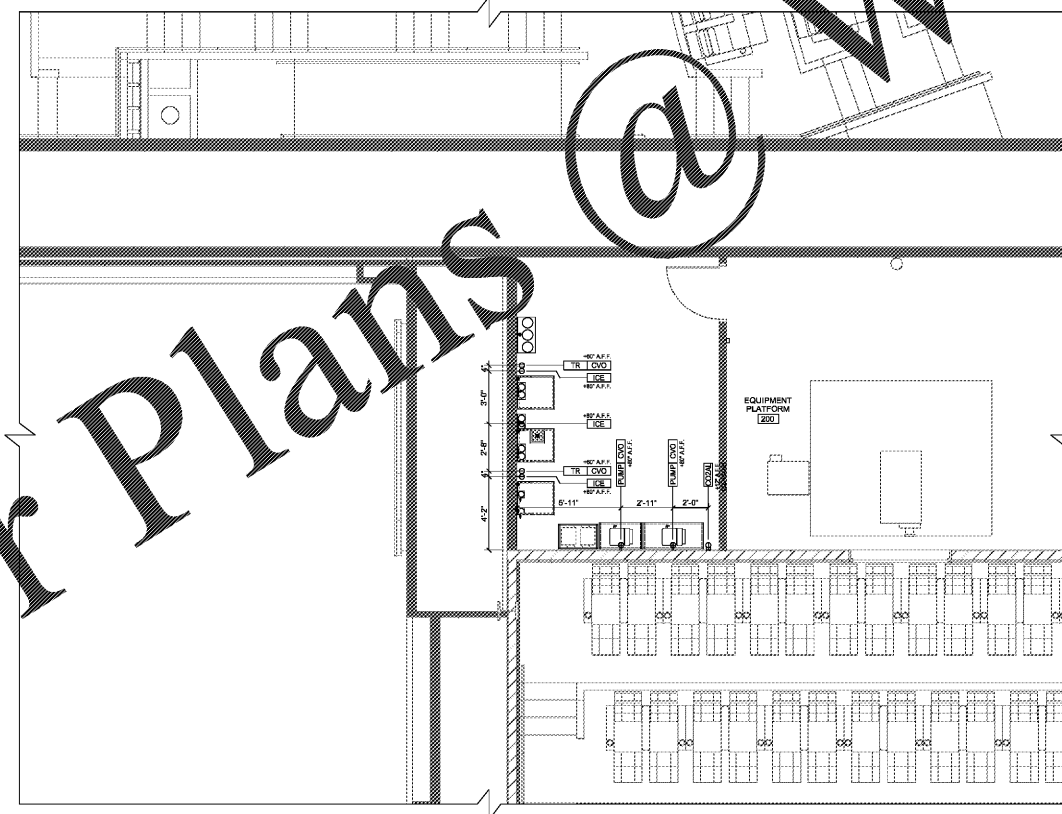
1. THESE DRAWINGS ARE TO BE USED AS AN INSTRUMENT OF REFERENCE BY ALL OTHER TRADES AND CONTRACTORS. ALL TRADES SHALL VERIFY THE INFORMATION AS INDICATED ON THESE PLANS WITH ACTUAL SITE CONDITIONS.
2. DIMENSIONS AND REQUIREMENTS FOR ALL EQUIPMENT THAT IS LISTED AS EXISTING, PROVIDED BY OTHERS OR PROVIDED BY OWNER, MUST BE VERIFIED WITH THE APPROPRIATE PARTIES.
3. ALL LOCAL, STATE, AND NATIONAL CODES SHALL APPLY.
4. ALL DIMENSIONS ON THESE PLANS ARE BASED ON FINISHED WALL AND FLOOR DIMENSIONS. ANY DISCREPANCIES BETWEEN THESE DRAWINGS AND ACTUAL OR INTENDED CONDITIONS IN THE FIELD SHOULD BE REPORTED TO THE ARCHITECT AND *environetics* inc. IMMEDIATELY.
5. THE STARTING OF ANY WORK BY CONTRACTOR OR SUBCONTRACTOR SHALL BE CONSIDERED PRIMA FACIE EVIDENCE THAT HE HAS INSPECTED AND ACCEPTED ALL CONDITIONS INVOLVED IN HIS WORK AND FINISH THEM SATISFACTORILY.
6. THE GENERAL CONTRACTOR SHALL BE RESPONSIBLE FOR COORDINATION OF ALL NECESSARY BLOCKING, BACKING, & FRAMING HANGERS FOR ALL FIXTURES, EQUIPMENT, & CASEWORK. ITEMS REQUIRING ADDL BLOCKING SHALL BE CONFIRMED WITH VENDORS PRIOR TO INSTALL.
7. CONTRACTOR SHALL PATCH ANY EXISTING WALLS, CEILING, ETC. AS NEEDED TO REPAIR/REPAIR/REPAIR DAMAGES MADE DURING COURSE OF WORK. FINISHES SHALL BE BROUGHT TO LIKE NEW CONDITION AND MATCH TYP. QUALITY OF WORK.
8. UNLESS OTHERWISE NOTED, ALL DIMENSIONS SHOWN ON THIS PLAN ARE FROM THE FINISHED FLOOR, CEILING OR WALLS TO THE CENTERLINE OF THE ROUGH-INS.
9. THESE DOCUMENTS PROVIDED BY *environetics* inc. ARE GUIDELINE DOCUMENTS ONLY AND ARE INTENDED TO BE INCORPORATED INTO THE FINAL CONSTRUCTION DOCUMENTS BY A LICENSED ARCHITECT OR ENGINEER THAT IS EMPLOYED BY THE OWNER. FINAL CODE COMPLIANCE, PLAN SUBMITTAL AND ASSOCIATED FEES ARE THE RESPONSIBILITY OF THE ARCHITECT AND/OR GENERAL CONTRACTOR.
10. ANY AND ALL REVISIONS SHALL BE WRITTEN IN CHANGE ORDER FORM AND APPROVED & AUTHORIZED PRIOR TO COMMENCEMENT OF WORK.

EQUIPMENT SCHEDULE ABBREVIATIONS

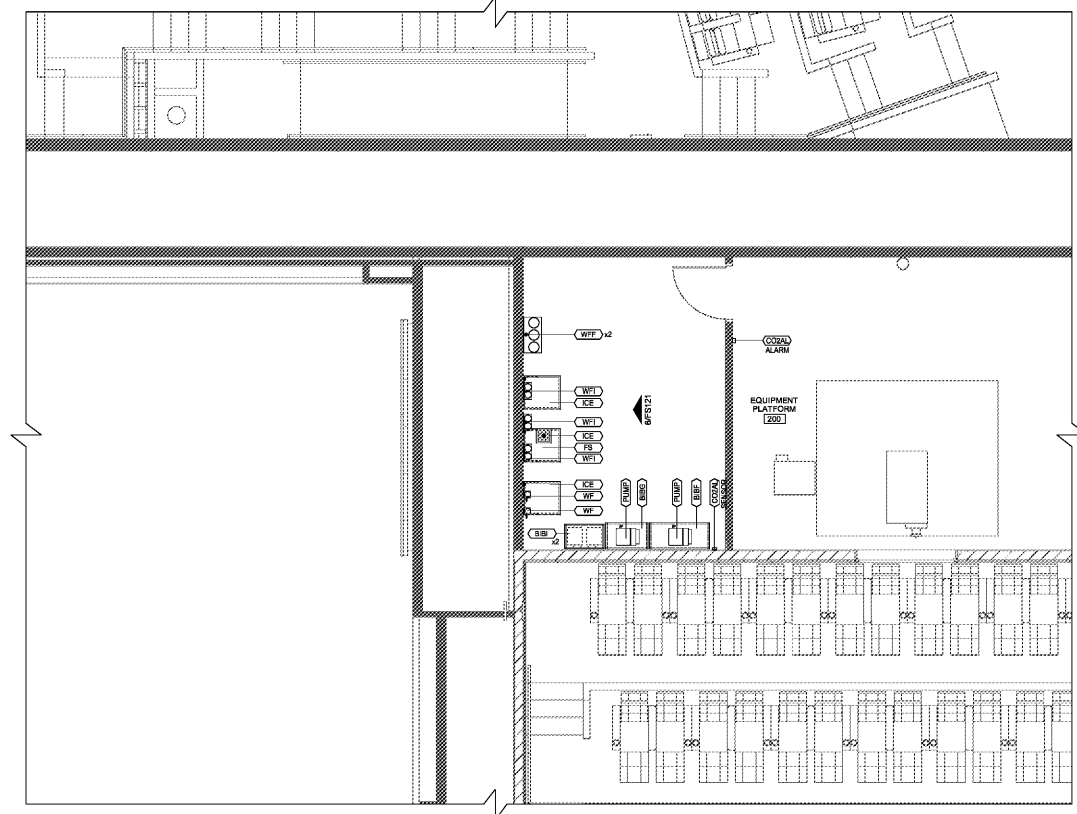
- CW COLD WATER
- DR DUPLEX RECEPTACLE
- DW DIRECT WASTE
- FP FLOOR SINK
- HCW HOT/COLD WATER
- HW HOT WATER
- IW INDIRECT WASTE
- MROCP MIN. REQUIRED OPERATING CIRCUIT PROTECTION
- OFCI OWNER FURNISHED CONTRACTOR INSTALLED
- SR SIMPLEX RECEPTACLE



3 MEZZANINE PLUMBING ROUGH-IN PLAN
SCALE: 1/4" = 1'-0"



2 MEZZANINE ELECTRICAL ROUGH-IN PLAN
SCALE: 1/4" = 1'-0"



1 MEZZANINE EQUIPMENT PLAN
SCALE: 1/4" = 1'-0"

DATE: _____
DRAWN BY: _____
CHECKED BY: _____

environetics inc
1000 SHELBY DRIVE
NORTH KENNESAW, GA 30144
PH: (770) 422-7222 FAX: (770) 422-7223

SHEET LEGEND

ENV	ENVIRONMENTAL CONTROL SYSTEMS
MECH	MECHANICAL SYSTEMS
PLUMB	PLUMBING SYSTEMS
ELEC	ELECTRICAL SYSTEMS
STRUC	STRUCTURAL SYSTEMS
FIN	FINISHES
LAND	LANDSCAPE
GEN	GENERAL CONTRACTOR
ARCH	ARCHITECT
MEP	MECHANICAL, ELECTRICAL, PLUMBING
STR	STRUCTURAL
FIN	FINISHES
LAND	LANDSCAPE
GEN	GENERAL CONTRACTOR

AMC MADISON YARDS 8
AMC NEW BUILD
595 MEMORIAL DRIVE SE
ATLANTA, GA 30316

amc
American Multi-Cinema, Inc.
One AMC Way
11500 Ash Street
Lenexa, KS 66211

REV	DATE	DESCRIPTION

ORIGINAL ISSUE DATE: 05/21/2018

KEY PLAN:

NORTH

SHEET TITLE:
MEZZANINE EQUIPMENT PLAN

SHEET NUMBER:
FS110A

Order Plans @ www.LDPOnline.com