

GENERAL NOTES (ALL WAYFINDING)

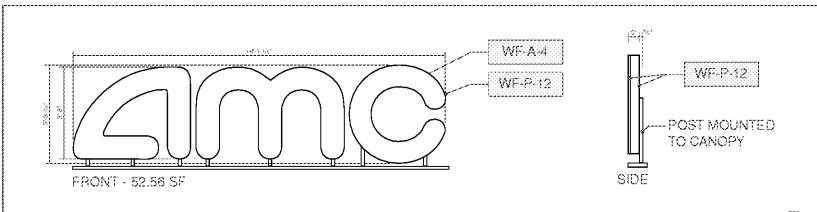
- A) FIELD VERIFY ALL DIMENSIONS PRIOR TO FABRICATION OF SIGNAGE.
- B) FIELD VERIFY MOUNTING CONDITIONS AND REQUIREMENTS PRIOR TO DETAILING AND FABRICATION.
- C) PROVIDE COMPLETE SET OF SHOP DRAWINGS FOR REVIEW PRIOR TO FABRICATION.
- D) REFERENCE WAYFINDING PLANS AND INTERIOR ELEVATIONS FOR ADDITIONAL SIGN LOCATION INFORMATION.
- E) PROVIDE EVEN INTERNAL ILLUMINATION AT ALL SIGNAGE W/ INTERNAL LIGHT FIXTURES.
- F) WAYFINDING ITEMS OWNER FURNISHED AND OWNER INSTALLED:
 - STANDARD POSTER CASES
 - BUS STOP POSTER CASES
 - MINI MARQUEES SIGN UNIT (WALL RECESS BY G.C.)
 - BOX OFFICE LCD BOARDS (LCD SCREEN TIMES AND TITLES)
- G) ALL BRAILLE ON SIGNAGE SHALL COMPLY WITH ADA GUIDELINES FOR ACCESSIBLE DESIGN.
- H) POWER FEEDERS AND CONDUIT ARE NOT THE RESPONSIBILITY OF THE SIGNAGE CONTRACTOR.

FONT NOTES

A) ALL WAYFINDING LETTER COPY FONTS SHALL BE: FUTURA MD BT - MEDIUM UNLESS NOTED

SIGNAGE FINISH LEGEND

MARK	COLOR	MFGR	NUMBER
PAINT COVERS:			
WF-P-1	PMS 186C "RED"	PANTONE	186C
WF-P-2	PMS 187C "RED"	PANTONE	187C
WF-P-3	PMS 188C "RED"	PANTONE	188C
WF-P-4	PMS 704C "RED"	PANTONE	704C
WF-P-5	SOSSAMER VEIL	SHERWIN WILLIAMS	9165
WF-P-6	PMS 158C "ORANGE"	PANTONE	158C
WF-P-7	PMS 143C "YELLOW"	PANTONE	143C
WF-P-8	PMS 2925CVC "BLUE"	PANTONE	2925CVC
WF-P-9	SATIN CLEAR COAT	MATTHEWS	42-228
WF-P-10	MATTE CLEAR COAT	MATTHEWS	42200SP
WF-P-11	WHITE	MATTHEWS	N202
WF-P-12	BLACK	MATTHEWS	N023
WF-P-13	BRUSHED ALUMINUM	MATTHEWS	41342
WF-P-14	BLACK FOX	SHERWIN WILLIAMS	7020
LEDS:			
WF-L-1	RED	GE TETRA MINIMAX	
WF-L-2	RED	GE TETRA MAX	
WF-L-3	WHITE 3200K	GE TETRA MINIMAX	
WF-L-4	WHITE 3200K	GE TETRA MAX	
WF-L-5	BLUE	GE TETRA MINIMAX	
WF-L-6	BLUE	GE TETRA MAX	
VINYL:			
WF-V-1	ONE-WAY WINDOW VINYL - 65/35 35% OPEN, 0.06" (1.5MM) PERFORATION SIZE	IMAGEVUE	CPEABWV
WF-V-2	1/2" W CLEAR EDGE TAPE	3M	8914
WF-V-3	DIFFUSER FILM 40% TRANSMISSION	3M	3635-30
WF-V-4	DIFFUSER FILM 60% TRANSMISSION	3M	3635-70
WF-V-5	WHITE TRANSLUCENT	3M	3630-20
WF-V-6	DUSTED CRYSTAL	GERBER	210-314
WF-V-7	TRANSLUCENT CARDINAL RED	3M	3630-63
WF-V-8	CARDINAL RED	GERBER	220-53
WF-V-9	WHITE	GERBER	220-10
WF-V-10	BLACK	GERBER	220-12
WF-V-11	60/35 DAY NIGHT VINYL	3M	3635-91
WALLCOVERINGS:			
WF-W-1	TYPE II WALLCOVERINGS	KOROGRAPHICS	ABACO BEACH
SIGN MATERIALS:			
WF-S-1	PVC BOARD	SINTRA	--
WF-A-1	CLEAR	PLEX	--
WF-A-2	CLEAR (NON-GLARE)	PLEX	--
WF-A-3	WHITE	PLEX	--
WF-A-4	RED	ACRYLITE	278-0
WF-A-5	BLUE	PLEX	2051



3'-6" H AMC SIGN - POST MOUNTED CHANNEL LETTERS

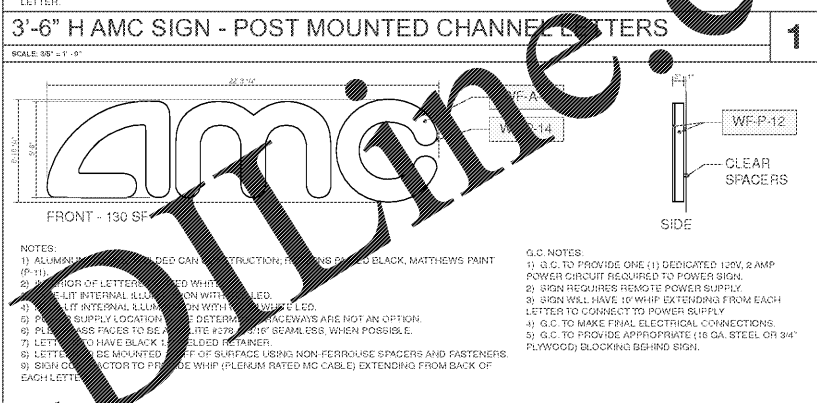
SCALE: 3/8" = 1'-0"

NOTES:

- ALUMINUM CRIMP STYLE CAN CONSTRUCTION; .063 ALUMINUM BACKS; .040 ALUMINUM RETURNS; PAINTED.
- INTERIOR OF LETTERS PAINTED WHITE.
- FACE-LIT INTERNAL ILLUMINATION WITH RED LED.
- POWER SUPPLY LOCATION TO BE DETERMINED; RACEWAYS ARE NOT AN OPTION.
- PLEXGLASS FACES TO BE ACRYLITE #376 0, 3/16" SEAMLESS, WHEN POSSIBLE.
- LETTERS TO HAVE BLACK 1" JEWELITE TRIM CAPS.
- LETTERS TO BE POST MOUNTED TO CANOPY.
- SIGN CONTRACTOR TO PROVIDE WHIP (PLENUM RATED MC CABLE) EXTENDING FROM BACK OF EACH LETTER.

G.C. NOTES:

- G.C. TO PROVIDE ONE (1) DEDICATED 120V, 2 AMP POWER CIRCUIT REQUIRED TO POWER SIGN.
- SIGN REQUIRES REMOTE POWER SUPPLY.
- SIGN WILL HAVE 10' WHIP EXTENDING FROM EACH LETTER TO CONNECT TO POWER SUPPLY.
- G.C. TO MAKE FINAL ELECTRICAL CONNECTIONS.
- G.C. TO PROVIDE APPROPRIATE (16 GA. STEEL OR 3/4" PLYWOOD) BLOCKING BEHIND SIGN.



5'-6" H AMC SIGN - EXTERIOR CHANNEL LETTERS

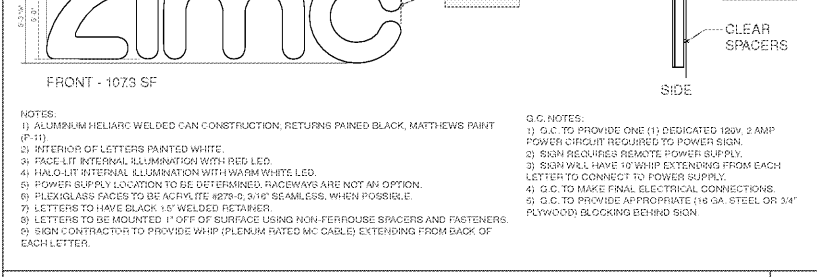
SCALE: 1/4" = 1'-0"

NOTES:

- ALUMINUM HELIARC WELDED CAN CONSTRUCTION; RETURNS PAINTED BLACK, MATTHEWS PAINT (P-11).
- FACE-LIT INTERNAL ILLUMINATION WITH WHITE LED.
- FACE-LIT INTERNAL ILLUMINATION WITH WARM WHITE LED.
- POWER SUPPLY LOCATION TO BE DETERMINED; RACEWAYS ARE NOT AN OPTION.
- PLEXGLASS FACES TO BE ACRYLITE #376 0, 3/16" SEAMLESS, WHEN POSSIBLE.
- LETTERS TO HAVE BLACK 1" WELDED RETAINER.
- LETTERS TO BE MOUNTED 1" OFF OF SURFACE USING NON-FERROUS SPACERS AND FASTENERS.
- SIGN CONTRACTOR TO PROVIDE WHIP (PLENUM RATED MC CABLE) EXTENDING FROM BACK OF EACH LETTER.

G.C. NOTES:

- G.C. TO PROVIDE ONE (1) DEDICATED 120V, 2 AMP POWER CIRCUIT REQUIRED TO POWER SIGN.
- SIGN REQUIRES REMOTE POWER SUPPLY.
- SIGN WILL HAVE 10' WHIP EXTENDING FROM EACH LETTER TO CONNECT TO POWER SUPPLY.
- G.C. TO MAKE FINAL ELECTRICAL CONNECTIONS.
- G.C. TO PROVIDE APPROPRIATE (16 GA. STEEL OR 3/4" PLYWOOD) BLOCKING BEHIND SIGN.



5'-0" H AMC SIGN - EXTERIOR CHANNEL LETTERS

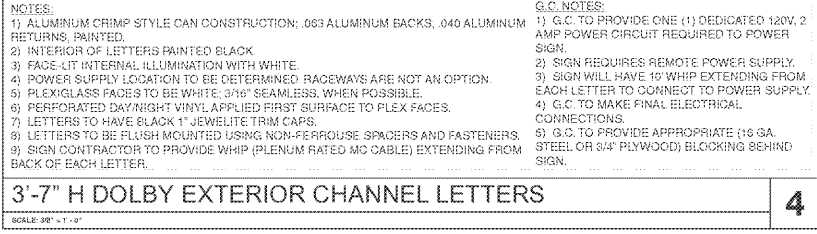
SCALE: 1/4" = 1'-0"

NOTES:

- ALUMINUM CRIMP STYLE CAN CONSTRUCTION; .063 ALUMINUM BACKS; .040 ALUMINUM RETURNS; PAINTED.
- INTERIOR OF LETTERS PAINTED BLACK.
- FACE-LIT INTERNAL ILLUMINATION WITH WARM WHITE LED.
- POWER SUPPLY LOCATION TO BE DETERMINED; RACEWAYS ARE NOT AN OPTION.
- PLEXGLASS FACES TO BE WHITE; 3/16" SEAMLESS, WHEN POSSIBLE.
- PERFORATED DAY/NIGHT VINYL APPLIED FIRST SURFACE TO PLEX FACES.
- LETTERS TO HAVE BLACK 1" JEWELITE TRIM CAPS.
- LETTERS TO BE FLUSH MOUNTED USING NON-FERROUS SPACERS AND FASTENERS.
- SIGN CONTRACTOR TO PROVIDE WHIP (PLENUM RATED MC CABLE) EXTENDING FROM BACK OF EACH LETTER.

G.C. NOTES:

- G.C. TO PROVIDE ONE (1) DEDICATED 120V, 2 AMP POWER CIRCUIT REQUIRED TO POWER SIGN.
- SIGN REQUIRES REMOTE POWER SUPPLY.
- SIGN WILL HAVE 10' WHIP EXTENDING FROM EACH LETTER TO CONNECT TO POWER SUPPLY.
- G.C. TO MAKE FINAL ELECTRICAL CONNECTIONS.
- G.C. TO PROVIDE APPROPRIATE (16 GA. STEEL OR 3/4" PLYWOOD) BLOCKING BEHIND SIGN.



3'-7" H DOLBY EXTERIOR CHANNEL LETTERS

SCALE: 3/8" = 1'-0"

NOTES:

- ALUMINUM CRIMP STYLE CAN CONSTRUCTION; .063 ALUMINUM BACKS; .040 ALUMINUM RETURNS; PAINTED.
- INTERIOR OF LETTERS PAINTED BLACK.
- FACE-LIT INTERNAL ILLUMINATION WITH WARM WHITE LED.
- POWER SUPPLY LOCATION TO BE DETERMINED; RACEWAYS ARE NOT AN OPTION.
- PLEXGLASS FACES TO BE WHITE; 3/16" SEAMLESS, WHEN POSSIBLE.
- PERFORATED DAY/NIGHT VINYL APPLIED FIRST SURFACE TO PLEX FACES.
- LETTERS TO HAVE BLACK 1" JEWELITE TRIM CAPS.
- LETTERS TO BE FLUSH MOUNTED USING NON-FERROUS SPACERS AND FASTENERS.
- SIGN CONTRACTOR TO PROVIDE WHIP (PLENUM RATED MC CABLE) EXTENDING FROM BACK OF EACH LETTER.

G.C. NOTES:

- G.C. TO PROVIDE ONE (1) DEDICATED 120V, 2 AMP POWER CIRCUIT REQUIRED TO POWER SIGN.
- SIGN REQUIRES REMOTE POWER SUPPLY.
- SIGN WILL HAVE 10' WHIP EXTENDING FROM EACH LETTER TO CONNECT TO POWER SUPPLY.
- G.C. TO MAKE FINAL ELECTRICAL CONNECTIONS.
- G.C. TO PROVIDE APPROPRIATE (16 GA. STEEL OR 3/4" PLYWOOD) BLOCKING BEHIND SIGN.

NOT FOR CONSTRUCTION

DATE: 05/22/2018

TIME: 09:59:50

Dimensional Innovation

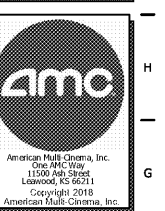
3421 Memorial Drive SE
Atlanta, GA 30316
Phone: 770.248.2400
www.dimensional.com

SHEET LEGEND

1	GENERAL INFORMATION & SCOPE OF WORK
2	GENERAL NOTES
3	CONSTRUCTION FLOOR & CEILING PLAN
4	CONSTRUCTION ELEVATIONS
5	MECHANICAL & ELECTRICAL PLAN
6	MECHANICAL & ELECTRICAL PLAN
7	MECHANICAL & ELECTRICAL PLAN
8	MECHANICAL & ELECTRICAL PLAN
9	MECHANICAL & ELECTRICAL PLAN
10	MECHANICAL & ELECTRICAL PLAN
11	MECHANICAL & ELECTRICAL PLAN
12	MECHANICAL & ELECTRICAL PLAN
13	MECHANICAL & ELECTRICAL PLAN
14	MECHANICAL & ELECTRICAL PLAN
15	MECHANICAL & ELECTRICAL PLAN
16	MECHANICAL & ELECTRICAL PLAN
17	MECHANICAL & ELECTRICAL PLAN
18	MECHANICAL & ELECTRICAL PLAN
19	MECHANICAL & ELECTRICAL PLAN

AMC MADISON YARDS 8

AMC NEW BUILD
905 MEMORIAL DRIVE SE
ATLANTA, GA 30316



REV	DATE	DESCRIPTION

KEY PLAN:

SHEET TITLE:

EXTERIOR SIGNAGE DETAILS

SHEET NUMBER:

WF203

SIGNAGE SUPPLIED BY OWNER

Order Plans @ www.ldonline.com